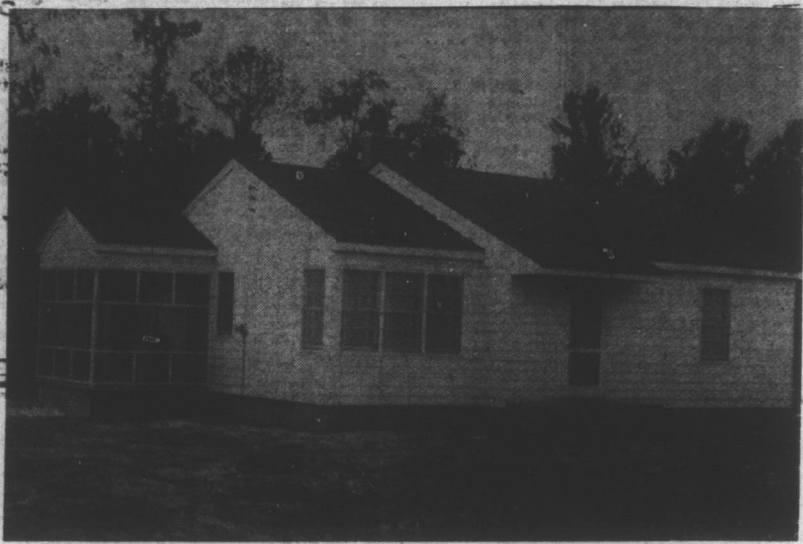


You Can't Buy More For Less

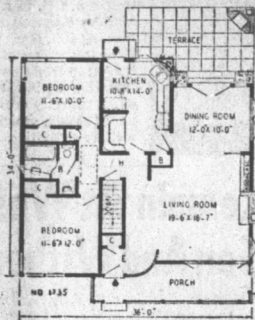
We Congratulate



MR. AND MRS. ERNEST WARREN OF DUNN, ROUTE 4

Upon the completion of their beautiful five-room home. The conveniently designed, well-constructed home contains two bedrooms, a kitchen, dining room, bath, a central heating hall and has two large screened porches. The contractor was E. R. Holland and the fine materials for this modern home were furnished by Godwin Building Supply Company of Dunn. This is another beautiful home built with Godwin materials.

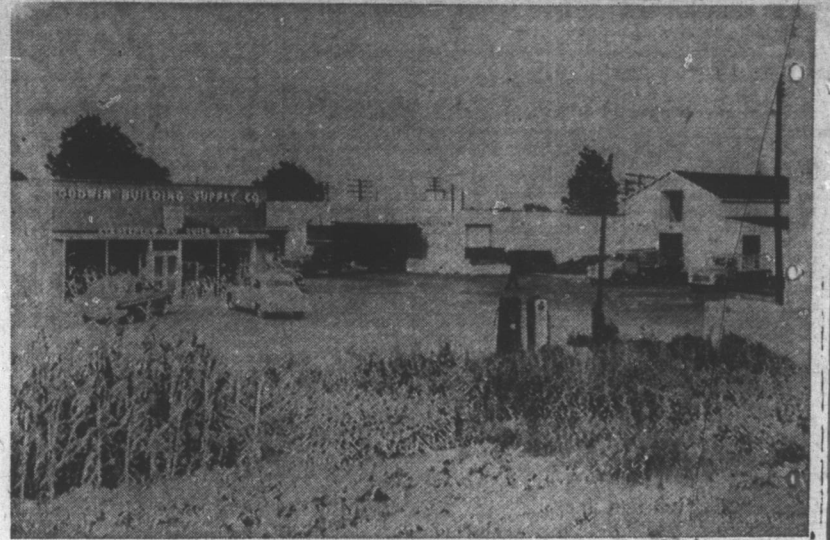
This Week's House Plan



No. 1735—A design for a 50 foot lot with all of the luxuries of the larger rambling types is illustrated in this modern-day planning. The large living room with fire place and large picture window, the expandable dining room and the terrace, with its barbecue oven, opening off the kitchen, affords all of the opportunities of year-round living. A disappearing stairway to the attic offers adequate storage space thus leaving the full basement for recreation, laundry, heating and hobby rooms.

	Cubic Feet:	
First Floor	10,159
Basement	9,792
Complete plans as shown or reversed, specifications, lumber and mill list	\$15.00

The Home Of Godwin Building Supply Co.



PART OF OUR FACILITIES

SHOWN here is a candid shot showing a small portion of Godwin Building Supply Company in Dunn. Among the vast facilities shown are the modern store and showroom, molding shed, completely-equipped shop, and one warehouse. Note the large free parking area, which provides ample room for Godwin's large fleet of trucks and for customers. Not pictured are: one large warehouse, 40 x 100 feet in size, another large block warehouse, 50 x 60 feet, the large concrete block plant and steam kiln and cement storage house. Godwin's facilities are among the largest, most modern and most complete to be found anywhere in North Carolina. (Daily Record photo by T. M. Stewart).

The sweet young thing had broken on her glasses. She took the remains back to the optometrist.

"Will I have to be examined all over?"

"No," he replied. "Just your eyes."

Sell Your Tobacco on the Dunn Market

This housewife cried

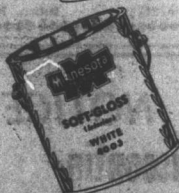
when she suddenly realized her beautiful new furniture and lovely new drapes made walls and woodwork look shabby.

But she dried her tears when

she discovered this quick remedy that costs so little and sets off her new possessions to best advantage.



if you have
a similiar problem



And want to give your walls a quick beauty treatment use "Minnesota" LUXTONE, a one-coat, self-sealing flat wall paint. It's a washable oil paint of heavy body, works freely and is self leveling. Usually one coat of LUXTONE will give excellent results without a primer or sealer over most wall surfaces. Or try "Minnesota" SOFT-GLOSS, a semi-lustre interior finish for it combines just the right degree of gloss with a pleasing effect of the lovely colors. SOFT-GLOSS is suitable for use on walls, woodwork and ceilings. For surfaces requiring easy and frequent cleaning, "Minnesota" HIGH-GLOSS interior paint is the product to use. HIGH-GLOSS produces a high gloss, enamel-like finish that resists dirt, grease and stains. It will wash like magic with ordinary soap and water.

Ask to see this year's Color Preview.

MINNESOTA
PAINTS

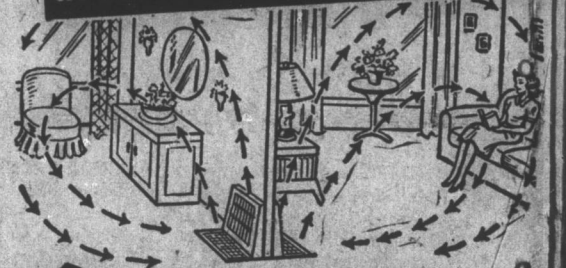


SHORT-CUT TO
QUICK, EASY
WINDOW WASHING



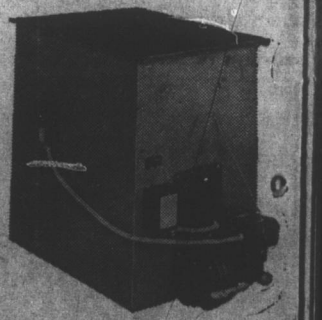
SPECIAL
For A Limited Time Only
These Beautiful
Ornamental Iron
HAND RAILS
ONLY \$12.50 per set

Shows You How the New
KLEER-KLEEN
Furnaces Bring More Heat
at Lower Cost to Your Home



Check the
Many Features

- ✓ PERFECT COMBUSTION extracts every ounce of heat from every drop of oil.
- ✓ THERMOSTATIC CONTROLS bring you an effortless supply of heat the year 'round.
- ✓ A KLEER-KLEEN tailored to fit your individual heating requirements—in capacity from 34M to 85M BTU output.
- ✓ 16-GAUGE, ELECTRIC-WELDED Heating Element for a Long Life of Service.



Open Six Full Days Weekly 6:45 A. M. To 6:00 P. M.

Godwin Building Supply Company

"Everything To Build With"

N. Fayetteville Ave.

Dunn, N. C.

Phone 2323