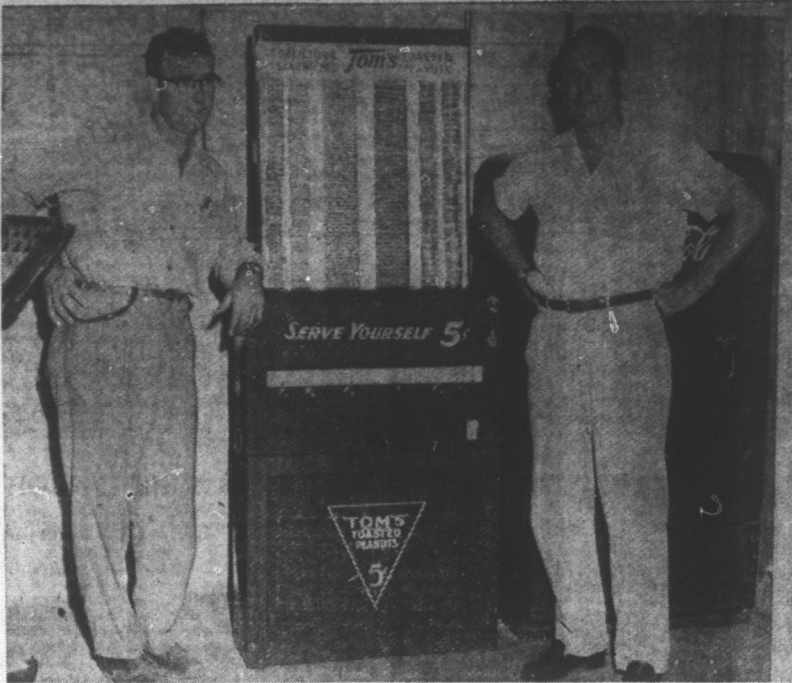


**Little Things**

(Continued from page one)  
 Temple's art. The entry won and is now official in Selma.

**LITTLE NOTES:** A. B. Johnson is the hardest-working president a club could have. For years, he's been playing the piano at club meetings, operating the movie projector whenever a film is shown and doing other jobs—such as running the program on various nights. Members of the club unanimously elected the Dunn school principal as president this year and then some of them started thinking: "What are we going to do for a pianist, for a movie projectionist and for all the other club duties A. B. performs?" But, versatile fellow that he is, Professor Johnson not only serves as president, but does all those other things, too. He's indeed a treasure to the club. Bill Twyford reports that he's beginning a program of expansion for Twyford Printing Company, which now does more business than any commercial printing firm in this entire section. He's just purchased a new \$4,000 power paper cutter, which will be the only one this side of Raleigh. He's also adding about \$10,000 worth of other new equipment and is badly in need of a larger building. When Bill came to Dunn, he had nothing but his clothes. All of which shows what a progressive man can accomplish. A large number of Dunn people attended the Darlington races. Sports Editor Joe Caviness was on the job there for The Record. Incidentally, The Record is adding several new sports features. Lincoln Faulk says he's still trying to get over a case of malaria. It had him in bed for a week. The Daily Record will soon lose its very capable city editor. Jim Henderson has just stepped up the ladder by landing a choice post on The Charlotte Observer. Charlotte is his hometown, too. Emile Hall, who spent the weekend in Kinston, reports the capitol of Lenoir County is really hustling with the big Dupont plant going up. Work on paving Erwin's city streets is now being mapped thanks to the good work of Coun-



**TOM'S MACHINES MAKE APPEARANCE** — Something new in the distribution of toasted sandwiches is appearing in this section. Joe Burnett, local distributor for the Tom Houston Peanut Company, is busy these days installing these beautiful vending machines, (which carry four types of sandwiches, bags of peanuts and a peanut bar. Edward Godwin, salesman, and Owen Hodges, assistant district sales manager, are shown here with a machine they had just installed. Four machines were installed the same day at N. M. Johnson's airport, Carolina Oil Company, The Daily Record and at Colonial Frozen Food Lockers. The machine is illuminated by a fluorescent light. (Daily Record photo by Bill Biggs).

ty Commissioner Bob Pate. Bob did a little swapping with his fellow commissioners to get the roads for Erwin. One Dunn Rotarian won't be taking a teacher to the "Teachers' Night" program Friday. His wife won't let him. Mrs. Mattie Washburn's boarding house is more popular than ever. That table is filled several times every meal. Y. Z. Cannon of

Chapel Hill, former State president of the North Carolina Barbers' Association, was a visitor in Dunn yesterday. Raymond Cromartie and Earl Westbrook are among those who have their season tickets for Carolina games. Dunn has no debutantes this year, but a number of people from here plan to attend the ball Friday night. Miss Mary Alice Hicks of Faison, niece

of I. R. Williams and step-daughter of Mrs. I. F. Hicks will be presented to North Carolina society at the annual event. **From War to Peace** WILLISTON, VI. — Isabel C. Leary, a woman Marine in World War II, was the first novice to enter the new cloister of Carmelite nuns here.

**You Can't Afford To Miss**



**BENSON'S  
 Big, Gala  
 Mule Day  
 Celebration**

**FRIDAY'S PROGRAM**

- OPENS FRIDAY AT 9 A. M. WITH MULE CONTESTS
- CONCERT BY TARBORO BAND AT 2:15 P. M.
- ADDRESS BY GOV. W. KERR SCOTT AT 3 P. M.
- PARADE BEGINS AT 3:30 P. M. CROWNING OF QUEEN AT 8:30 P. M.
- STREET DANCE AT 9 P. M.

MUSIC BY HOMER BRIARHOPPER AND WOODY HAYES

**SATURDAY'S PROGRAM**

- 10 A. M. WOOD CHOPPING CONTEST
- 3 P. M. BIG HORSE SHOW AT BALL PARK

**SUNDAY'S PROGRAM**

- 3 P. M. HORSE SHOW

*Benson Merchants And The  
 Benson Chamber Of Commerce  
 Welcome You*

**NOW!**

**FALL TREND**

*fashions*

For School --- Office And Party Wear  
 SMARTLY STYLED --- OUTSTANDING VALUES

**AT BELK'S**



**All Wool Cardigans**  
 Long sleeve - boxy. Pastels and darks.  
 Sizes 34-40 ..... **\$2.98**

**Jersey Blouses**  
 All Wool, short and 3/4 bat wing sleeves.  
 Tailored and novelty styles. Asstd. Fall shades. Sizes 32-38 ..... **\$2.98**

**Corduroy Jackets**  
 Classic fitted and semi-boxy novelty styles.  
 Pocket and button trim. Asstd. Fall colors.  
 Sizes 12-18 ..... **\$5.95**

**Long Wearing Corduroy**  
 SKIRTS. Straight and flared. Novelty styles.  
 Asstd. Fall colors. Sizes 24-30 ..... **\$2.98**

**Rayon Gabardine Skirts**  
 Fly front classic and novelty flare styles.  
 Asstd. dark and light shades. Sizes 28-30.  
 Rayon wool blend - flare and pleated styles -  
 pocket tab and button trims. Some with  
 belts. Sizes 24-30 ..... **\$1.98**

**Plaid Skirts**  
 Rayon wool blend-flare and pleated  
 styles—pocket tab and button trims.  
 Some with belts. Sizes 24/30 ..... **\$3.09**



**All Wool Sweaters**  
 Short sleeve fitted slipon. Classic  
 and novelty knits. Fall colors.  
 Sizes 34-40 ..... **\$1.98**

Zelan Poplin

Windbreakers

Two pocket, zipper front. Asstd.  
 colors. Sizes 6 to 20 ..... **\$3.98**

**100% Nylon Sweaters**  
 Short sleeve classic slipon. Classic  
 and novelty knits. Asstd. colors.  
 Sizes 34-40 ..... **\$2.98**

**Knit Polo Shirts**  
 Long wearing combed cotton. Short  
 and 3/4 sleeves. Solid, pastels and  
 darks. S M L ..... **\$1.00**



**Rayon Blouses**  
 Tailored shirts — tuck and lace  
 trim, dressy styles. White, pastels  
 and darks. Sizes 32-38 ..... **\$1.29**



**Miss Swank Slip**  
 A \$3.98 value with the famous  
 straight plus bias design — will not  
 ride up. Multi-crepe, 4" lace trim  
 top and bottom. Sizes 32-40 ..... **\$2.98**

**Cotton Slips**  
 Straight cut. Eyelet embroidered  
 trim. The best buy of the year in  
 washable cotton undies.  
 Sizes 32-40 ..... **\$1.79 - \$1.98**



**Crepe Blouses**  
 Short and long sleeves. Dress and novelty  
 styles. White, pastels and darks.  
 Sizes 32-40 ..... **\$1.98**

**Crepe Blouses**  
 Tissue faille and washable multi-filament crepe.  
 Dressy and tailored styles. Short and long  
 sleeves. Pastels, light shades and darks.  
 Sizes 32-44 ..... **\$2.98**

**Belk's**

Home of Better Values