

Mrs. Patrick Heads Catholic Lay Group

At the annual election of new officers for the Sacred Heart Unit of the North Carolina Catholic Laymen's Association, Mrs. W. G. Patrick of South Elm Avenue here was elected to the office of Chairman for the 1952-53 term of office. The election took place on Monday evening, August 25 at a regular meeting in the Sacred Heart Rectory. The meeting was presided over by Father Francis A. McCarthy, pastor of the Sacred Heart Church.

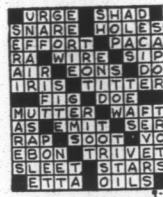
The Sacred Heart Unit of Dunn is one of the many affiliates of the state-wide organization designed to unify the Catholics of North

Carolina and to bring about friendlier relations between the non-Catholics and Catholics of the Tar Heel State.

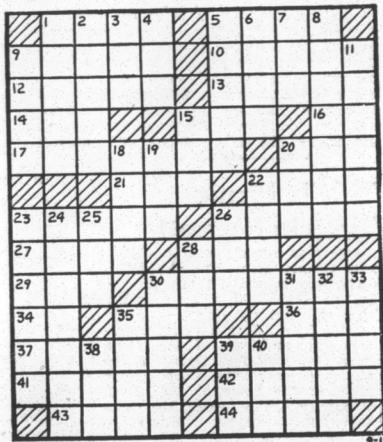
OTHER OFFICERS ELECTED
Mrs. George Joseph of North Ellis Avenue was elected to the office of Vice-Chairman and Miss Adeline Jannette of North Wilson Avenue was chosen as the secretary of the local group. Their

DAILY CROSSWORD

- | | | |
|--------------------------------|-------------------------------|--------------------------------|
| ACROSS | 2. Billiard shot | 22. Stuff |
| 1. Cigarfish | 3. Sum up | 23. Lifted |
| 5. Internal decay of fruit | 4. Governor's title (Algiers) | 24. Disregards |
| 9. Shadow | 5. Swell | 25. Disease of sheep |
| 10. Theater seats | 6. Nobleman | 26. Kind of muffin |
| 12. Robust | 7. Ovum | 28. A shade of brown |
| 13. Musical instrument | 8. Pots for tea | 30. Like a horse |
| 14. Mouth: comb. form | 9. Furnished with shoes | 31. Greek letter |
| 15. Cushion | 11. Reptiles | 32. Embers |
| 16. Father | 15. Fasten | 33. Sleeveless garment (Arab.) |
| 17. Fault | 18. Reverberate | 35. Indian weight |
| 20. American editor and author | 19. Rodent | |
| 20. Crushing snake | 22. Stuff | |



Saturday's Answer
38. Rodent
39. Sleeveless garment (Arab.)
40. Lap robe



- | | | | | | | | | | | | | | | | | |
|---------|------------|-----------------|---------------------|----------------------|--------------|-------------------|----------------------------|---------------|--------------------|------------------|-------------|----------------|------------------------|------------------------|------------|------------------------|
| 21. Tin | 22. Coop | 23. Appropriate | 24. Ground covering | 27. Exchange premium | 28. Beverage | 29. India (poet.) | 30. Suspended canvas couch | 34. Therefore | 35. Unit of weight | 36. Extinct bird | 37. Mistake | 39. Of an area | 41. Dspenses, as cards | 42. Musical instrument | 43. Remain | 44. Moslem title (pl.) |
| DOWN | 1. Portion | | | | | | | | | | | | | | | |

DAILY CRYPTOQUOTE—Here's how to work it:
A X Y D L B A A X R
I S L O N G F E L L O W

One letter simply stands for another. In this example A is used for the three L's, X for the two O's, etc. Single letters, apostrophes, the length and formation of the words are all hints. Each day the code letters are different.

A Cryptogram Quotation
L'QQ VDCPG ON LO. OBNKYB BCQQ
LOVCQH VBNKQE YPDC, PRE ALE
ZCIBNQE ZS DCPJC-VBPGVCVDCPTC.

Saturday's Cryptoquote: WHERE HE PLUNGES IN HE MAKES A WHIRLPOOL, AND ALL STREAM DOWN TO IT—COLERIDGE.

terms of office began immediately.

HEADS ALTAR SOCIETY
During the business of the evening, Mrs. Joseph Kotas of West Cumberland Street was elected as President of the Altar Society for the coming year. The chief responsibility of the Sacred Heart Altar Society is to care for the linens of the altar, and those used for the Holy Sacrifice of the Mass and to keep clean the interior of the Church.

Plans were made at the meeting for some of the forthcoming events which will be sponsored by the Sacred Heart Group of the N.C.L.A.

Storm Tosses Ships Around

MIAMI, (AP)—The first tropical storm of the year with winds up to 58 miles an hour tossed around at least three ships in its path today as it churned up strength in the Atlantic.

The Miami weather bureau reported in an 11 a. m. advisory that the storm, actually a series of turbulent squalls, "continues to intensify slowly." It was located 325 miles northeast of San Juan, Puerto Rico, or about 1,200 miles east-southeast of Miami.

The squall wave was moving at about 13 miles per hour in a west-northwesterly direction and was expected to continue the same course for the next 12 hours with "slight intensification."

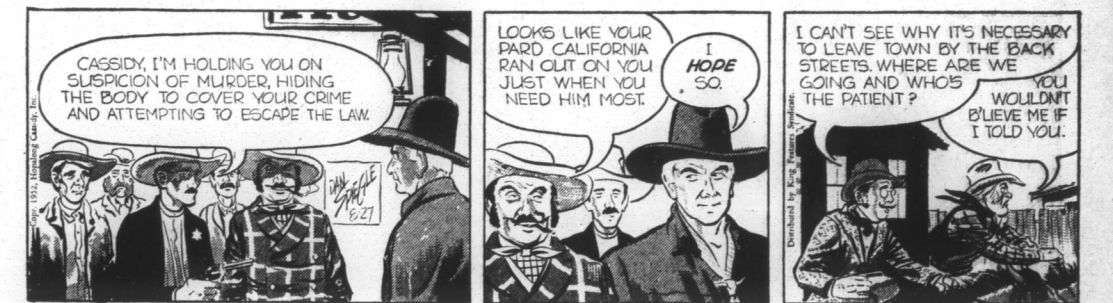
Forecaster Leonard Pardue said the vessel, Pont Leveque, reported it was rolling in 40 mile an hour winds and was being pounded by heavy rains. The Pont Leveque was 100 miles northeast of the "poorly organized and diffuse" center, Pardue said.

The ship Spurt was 100 miles north of the center and the Akaroa 50 miles east. None of the three reported trouble.

NO PROFIT EITHER WAY
ST. LOUIS, Mo. — (AP) — Two holdup men who robbed a market here arrived in two automobiles but fled in only one. Apparently figuring the auto was worth more than the \$235 loot, they returned in half an hour to pick it up and were nabbed by waiting detectives.

CIVIL DEFENSE TAUGHT
CLEVELAND, O. — (AP) — John Carroll University has established a course for graduate students that gives full credit for civil defense training. The unique course is believed the only one of its kind in the country.

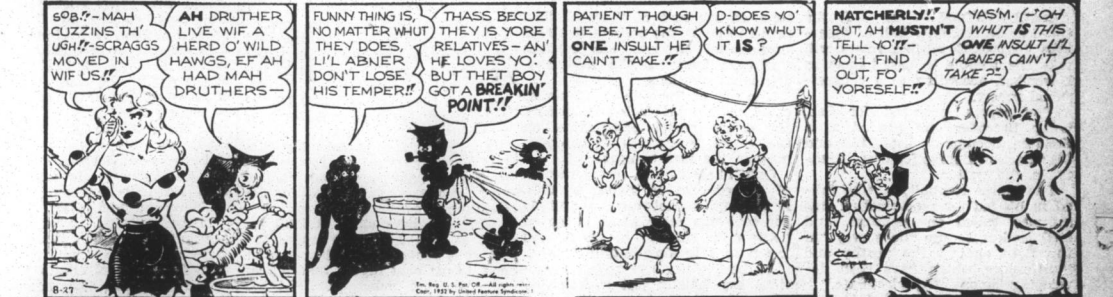
HOPALONG CASSIDY



BRINGING UP FATHER



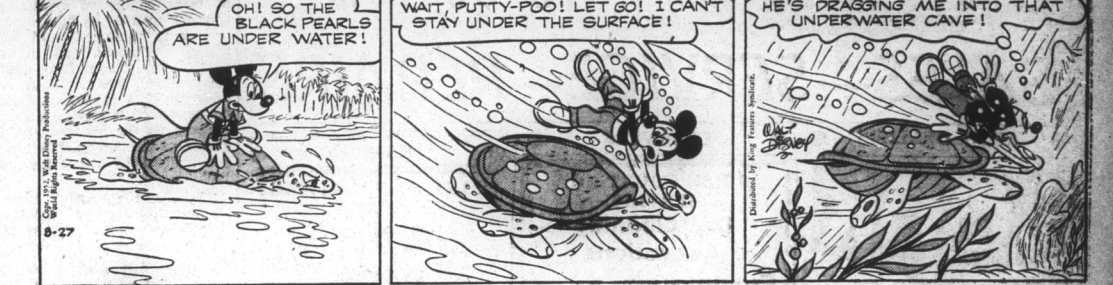
LIL' ABNER—By Al Capp



SNUFFY SMITH



MICKY MOUSE



BLONDIE



NANCY—By Ernie Bushmiller



DICK TRACY



Peerless Theatre Erwin, N. C.

WEDNESDAY ONLY
"JAPANESE WAR BRIDE"
The Story of A Misgenetic Love!
Starring
SHIRLEY YAMAGUSHI
DON TAYLOR
Selected Short Subjects

LILLINGTON THEATRE

Last Time Today
FRANCIS GOES TO WEST POINT
Starring
DONALD O'CONNOR
and
FRANCIS & FRANCES
Plus
News - Cartoon & Short

CENTER VIEW DRIVE-IN

Wed. nite-Prize night-Win a prize
WEDNESDAY - THURSDAY
1st Show Starts At 7:30
DESTINATION MOON
COLOR BY
TECHNICOLOR
Shows start at dusk.
Two shows each night.
All children in cars under 12 free.

STEWART

Today Only
RAY MIDDLETON
MURIEL LAWRENCE
in
"I Dream Of Jeanie"
also
Color Cartoon

DUNN

Today thru Friday
RICHARD WIDMARK
MARLYN MONROE
in
"DON'T BOTHER TO KNOCK"
also
News - Sport

HARNETT

Today & Thursday
(Double Feature)
ALAN LADD
in
"CAPTAIN CAREY, U. S. A."
and
KENT SMITH
in
"THIS SIDE OF THE LAW"
also
Color Cartoon

LOOK AT THIS TIRE FOR VALUE!

- ★ SAFETY
25% STRONGER RAYON BODY
- ★ MILEAGE
COLD RUBBER TREAD
- ★ COMFORT
CUSHION RIDE
- ★ STYLE
NEW AND SMART



FIK Air-Flight DELUXE

If you need tires, you need FISK. For here is the finest first-line tire ever built by the FISK Division of the United States Rubber Company.
Drive down and see us today, we'll be glad to show you this great new tire.

JOHNSON COTTON COMPANY
Farm Equipment Division
Telephone 3116
CASH IF YOU HAVE IT—
CREDIT IF YOU NEED IT—

LEE'S
24 Hour Road
Truck Terminal
Esso
And Wrecker
Service
PHONES
2727 - 2052
FAYETTEVILLE HWY.
DUNN, N. C.