

CLASSIFIED ADS

CLASSIFIED RATES

This Size Type 2c word
 24 Word Minimum 50c
 Same Size 3 Times Only \$1.00
 This Size Type 3c word
 3 Times Only \$1.25

FOR SALE

FOR best results with all farm animals, WAYNE FEED is the product for you to buy. You will find a complete line of WAYNE FEED at FARMER'S SUPPLY, Dunn. 8-17-tf-c

FOR SALE: Paint Spray. Just plug in, fill up can and go to work. 3 to 4 inch stroke. Easy to clean. See Reuben Jones at 703 S. Elm Ave. Dunn. Phone 2991. 1-6-3t-c

FOR SALE: Thrift plants for sale. See Mrs. E. H. Kirby at the Second Baptist Church. 1-6-3t-c

FOR SALE: Seven Atlantic Gas Space Heaters — 14,000

START YOUR SAVINGS AT COMMERCIAL BANK
 Dunn, N. C.

For House Moving Contact THE CHANCE BROTHERS
 Dunn, Route 4 Near Baersville

ACE SIGN CO.

NEON SALES AND SERVICE

Office Located At 305 W. Canary St.
 DIAL 2911 — DUNN, N. C.

Hatcher & Skinner Funeral Home

ESTABLISHED IN 1912
 AMBULANCE SERVICE

Phone 2447

Dunn, N. C.

SALES and SERVICE
 A Big Complete Shop

24 HOUR WRECKER SERVICE

SEE OUR GOOD USED CARS

W. & S. MOTOR CO.

N. WILSON AVE. DUNN, N. C.

BTU. Practically new—will sell at sacrifice. — See Mr. Hanna at Ma's Kitchen — Phone 9211 3tc

FOR SALE: Practically new five room house with bath. Located at 603 N. McKay Ave. 1-7-3t-c

WANTED

WANTED: Waitresses. Good hours, good pay and tips. Permanent. Johnson's Restaurant. 1-5-tf-c

SPECIAL NOTICES

ELECTRIC MOTORS — We specialize in rewinding and repairs of all types of electric motors, single and three phase. All work guaranteed. Page Electric Company, 107 Chinton Highway, Dunn, N. C. Phone 4398. 10-9-tfc

FOR GOOD FAST RESULTS place your real estate with us for fast disposal. Inquiries everyday. Snipes Insurance Agency. 10-7-tf-c

Auto Finance

AUTO LOANS

REFINANCING — Reduce Your Present Payments

Money in 10 Minutes

MOTOR CREDIT CO.

DUNN, N. C.
 Fayetteville St. Phone 3158

BOYS EARN EASY MONEY — The Daily Record from time to time has openings for carrier boys. Some of our carriers now averaging as high as \$12 per week. Requires only a couple hours after school. Excellent training for boys. Must be 12 years old and have parents' consent and cooperation. Apply to Mr. Follett at Record office.

HOUSEWIVES, FARM - WIVES — EARN EXTRA MONEY IN YOUR SPARE TIME by getting renewals

and selling new subscriptions to The Daily Record. Some agents earning high as \$50 a week in spare time. All you have to do is call on your friends and neighbors in spare time. Doesn't have to be sold. All you have to do is take orders. Apply to Mr. Follett at Record office.

LCANS INSURED: Leave your wife a deed instead of a debt. Consult us for full protection at low cost on your loan. SNIPES INSURANCE AGENCY, DUNN, N. C. tnc

20 in. Board well, completely tiled. \$3.75 a foot. H. & C. Well Co. Raleigh, N. C. 707 Grove St. 12-30-9t-p

SEE V. E. BYRD, BUNN-LEVEL for 8 x 16 concrete blocks, corn shucking, combining, cutting stalks, disking breaking land, bailing hay, grinding feed, sawing wood, drilling grain, spreading lime. Prices are right. 1-8-24-tp

EASY TERMS on home repairs and improvements. No down payment required. Call 2264. NuHome Builders & Supply Co. 11-18-eod-c

FOR RENT

FOR RENT: Apartment: Steam heat and air conditioning Dr. H. A. Eldredge Call 3421 or 3022. 1-2-tf-c

ELECTRIC floor polisher. Minimum charge, 75c a day. Johnson Furniture Co. Lucknow Square, Dunn, Phone 2427. 2-28-tf-c

FOR RENT: Nice store, 40 by 100. Suitable for super market, grocery store or other line of business if desired. Good location. Plenty of parking space. Formerly occupied by Fowler Radio Co and across from new Chevrolet building now being built. If interested, call Louis Baer, Dunn. 11-4-tf-c

FOR RENT: Nice garage equipped with lights and water, cement floor. Size 20 by 24 ft. Plenty of space for outside work and parking. Reasonable rent. Located behind Brown's Grocery on the Old Post Road. Contact Mrs. L. I. Pate, Route 1, Erwin, N. C. 12-31-tfn

FOR RENT: Four room upstairs apartment. Two bedrooms, living room and kitchen. Electrically equipped. Furnished. Mrs. A. B. Adams, 310 S. Magnolia Ave. 12-31-tfn

FOR RENT: Upstairs bedroom. Continuous hot water. Recently renovated. Close in. Call 3194 after 5 p. m. 1-6-3t-p

FOR RENT: 2 room downstairs apartment. Electrically equipped. Private entrance and bath. Call 2358. Available January 15. 1-7-3t-c

HELP WANTED

BOOKKEEPER WANTED — Woman bookkeeper. Must know how to keep double entry books. Must also know how to use typewriter. Permanent position. Good salary. 1-5-t c

Chevrolet

(Continued From Page One)

is known as the Bel Air and credited with being the most luxurious models in Chevrolet history. To be produced as two- and four-door sedans, a convertible and sport coupe, the Bel Air's are included in the choice of 16 Fisher body types. Other passenger car series are designated as the "Two-Ten" and "One-Fifty."

2—A new 115-horsepower "Blue Flame" engine and a refined Powerglide automatic transmission re-engineered for greater operating economy and faster pickup. The so-called "standard" engine also moves up to 108 horsepower, a gain of 17.4 per cent over 1951.

3—Two Chevrolet "firsts" in the low-price automotive bracket are registered in optional equipment available on all cars. Power steering, which reduces manual effort yet maintains traditional steering safety, makes its debut. The second innovation is the Autronic Eye, an electronic mechanism that automatically lowers headlamp beams for passing.

4—Roomier and stronger bodies with greatly expanded visibility. All have curved, one-piece windshields from which the center divider has been eliminated. Other body construction highspots include front swingout door hinges to provide easier entrance; fold-away front seat backs in two-doors; and "wrap-around" rear windows.

5—Operating advances cover the automatic choke on all cars, softer, smoother brake action, easier steering, even more reliable starting in damp weather, static-free ignition, softer front and rear springs for improved ride, and higher capacity generator.

THREE STATION WAGONS
 6—Unusual developments in the station wagon field. Three station wagons, one known as the "Townsmen" (eight-passenger in the "Two-Ten" and "One-Fifty" series). The latter contain three-passenger rear seats that can be folded into the floor.

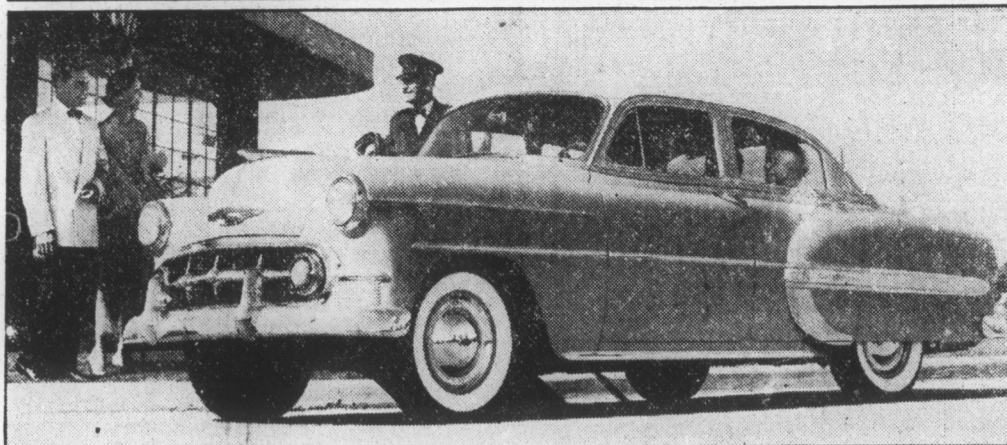
7—An array of convenience items including key-turn starting, crank-type front door ventipane controls

ry. Apply by mail only. Box 391, Dunn, N. C. tnc

CASHIER WANTED: Dunn Department Store has opening for woman cashier. Must have experience. Must also know typing and shorthand. Permanent position. Good salary. Apply by mail only to Box 391, Dunn, N. C. tnc

HELP WANTED: First class mechanic and welder. Steady work, good pay. Also man to run logging job. Register Bros. Lumber Co. 1-5-t c

Four-Door Sedan in New Chevrolet Bel Air Series



The Bel Air four-door sedan is one of four body types with which Chevrolet pioneers a completely new series of passenger cars for 1952. Richness in exterior and interior appointments gives the series

a distinction never previously achieved in the Chevrolet market. Increased performance, comfort and convenience are common to the Bel Airs and the "One-Fifty" and "Two-Ten" series.

with the minimum of effort.

All series are equipped with panoramic rear windows, and rear visibility is as good as front view. Whether cruising along the road or backing from the driveway, there is no necessity to crane to see past obstructions. The view is clear in all directions.

All two door models have the new tilt-away and slide-away seats for easier entrance and exit. Doors, too, are wider, for the same reason.

The interiors have been carefully designed for beauty and durability, with smart new upholstery; more

nylon for longer wear and easier slideability.

The air intake and ventilating system has been increased by 70 per cent and air conditioner is available as optional equipment on some of the models.

A visit to the showrooms tomorrow when the new model goes on display, will convince anyone that the new 1952 Buick is the best in its price field.

Former presidents John Adams and Thomas Jefferson died July 4, 1826, while James Monroe died July 4, 1831.

Buick

(Continued From Page One)

deck lines, give it the most graceful "goodbye" in motordom. The power plants in all series are of record high horsepower, and designed for economical operation. The durability of Buick motors has long been a byword, and the present model is no exception.

The new twin-turbine Dynaflo gives faster, quieter getaway and adds to the economy and power brakes, standard on Skylark and optional on Roadmaster series, makes stopping in emergency an easy and simple matter.

Power steering, available on all series, plus the shorter radius of turning on Roadmaster models, makes it easy to get the big car into those close parking spaces

LOOK

GOOD USED CARS — TRUCKS



NAYLOR-DICKEY
 DIAL 2127
 Fayetteville Hwy. Dunn

Feeds — Seeds
 Fertilizers
DUNN FCX SERVICE
 R. H. GODWIN, Manager



Where's the OTHER HALF of Your Policy?

You might as well have just half a policy if your house has nearly doubled in value. Find out NOW! We'll be glad to check all your property insurance and make recommendations to bring it up-to-date. No charge or obligation, and you'll find it easy to keep it that way with Planalytic. May we discuss it with you further? Come in or phone.

SNIPES INSURANCE AGENCY
 Phone 2121 - Dunn



Announcing

A CHANGE IN MANAGEMENT OF

The Dunn-Rite Bakery

North Wilson Avenue — Dunn, N. C.

The Bakery Is Now Under Lease To And Operated By —

Mr. Joe Earnhardt

Former partner and manager of bakery department

Mr. Earnhardt state that there will be no change in personnel and the bakery will be operated under the same high standards as before.

We regret immensely Mr. White's leaving the bakery and sincerely extend to him the best of everything in the future.

JUST ARRIVED

OUR 1952 COLLECTION OF COTTON DRESSES, TOPPERS, SUITS, AND COATS. HUNDREDS AND HUNDREDS OF SMART, NEW STYLES TO SELECT FROM.

DRESSES

Shirley Lee
 Doris Dodson
 June Arden
 Lynbrook
 Betty Barclay
 Margo Walters
 Teen-Timers
 Jollie Juniors
 Westover
 Well-Made
 and many others.

A Complete Range Of Sizes.
 7 to 17 - 8 to 20 - 12 1-2 to 24 1-2
 and 38 to 50.

PRICED FROM
\$5.98 to \$24.75

SPRING SUITS AND TOPPERS

Betty Rose
 Betty Jean
 Judy Nell
 Nan Buntley
 Craftshire
 Donnybrooke
 and many others.

Priced From
\$8.95
 to
\$49.50

SELECT YOUR COTTONS NOW!

Louis Baer Dept. Store

D. M. Kimmell, Manager
 E. Broad St. Dunn, N. C.

Buy your Spring Suit and Topper Now On Our Lay-Away Plan