

Chevrolet Trucks Will Go On Display

The Chevrolet truck line for 1953, increased to a total of 74 models on 11 wheelbases, features, among other commercial advantages, greater horsepower and chassis ruggedness. Ranging in size from the sedan delivery on a 115-inch wheel-

base to a school bus chassis of 212-inch wheelbase, accommodating bodies of 54 passenger capacity the models answer virtually every hauling need.

Improved performance, stronger frames and axles and better braking are some of the highspots that apply to individual series in the 1952 program of significant refinements. New and livelier colors, increased generator capacities, a wider range of options and distinctive series identification are also included in the line that has constantly led the industry in sales.

VALVE-IN-HEAD ENGINES
Offered in the latest Chevrolet truck models are two engines of the traditionally economical valve-in-head design. The Loadmaster, standard in some of the models and optional in others, has been increased in power for 1953. The Thriftmaster, also improved at several points, is standard on the lighter trucks.

The Loadmaster engine, with a compression ratio of 7.1 to 1 and horsepower of 108, has been redesigned throughout. From the cylinder head with its revised combustion chamber down into the crankcase, with extra side ribbing and thicker walls, the engine has been created as a balanced unit. This includes a drop-forged crankshaft properly counterweighted, strengthened connecting rods, chrome-plated top piston rings and valve rotators.

To meet increasing electrical loads a new 45 ampere generator is now standard equipment on both engines. Because of the higher voltage at the spark plugs new moisture resistant covers for spark plug terminals assure more positive starting.

For additional safety in operation, the brake improvement program incorporates Torque Action brakes in all models except the heavier-duty trucks which have Twin Action brakes at the rear. The brakes utilize the momentum of the truck to assist stopping effort. Front brake area has been increased on some medium and all heavy-duty models to provide greater durability.

The three-speed transmission has been improved by lengthening the main shaft and the installation of a second set of needle bearings.

Side-mounted spare tire carriers are optional equipment this year on light- and medium-duty pickups. E-Z Eye glass, which reduces sun glare and the brilliance of oncoming car lights in night driving, is another production option. New semi-drop 15x5.50 wheel with a 5-16 inch deeper drop section to provide easier mounting and tire removal is optional on light-duty and standard on some medium-duty models.

On the cab-over-engine series, the radiator core is fitted with a shroud which directs the air circulated by the fan through the radiator core, thus utilizing more effectively the heat dissipating capacity of the core. A super-cooling core, with 1-2 inch greater depth and more frontal area, is offered with a shroud and a four pound pressure cap as a regular production option on heavy-duty models.

DAILY CROSSWORD

- ACROSS**
- Independent passage (mus.)
 - Lubricate
 - Arrange, as cloth
 - Oil of rose petals
 - Mother
 - Mischievous
 - Roof of the mouth
 - Splashes
 - A slant
 - Either one of a married couple
 - Mimic with a lid
 - Thrice (mus.)
 - Body of salt water
 - Prepare for publication
 - Sea eagles
 - Marks to let stand (print.)
 - Walked
 - Greek letter
 - Girl's name
 - Concentrated one's vision
 - Chum
 - School session
 - Public notice
 - Related
 - A refund
 - Shaving instrument
 - Blundered
 - Network
 - River (Eur.)
- DOWN**
- Hire for private use
 - Provoke
 - Neuter pronoun (sym.)
 - Field of dramatic art
 - Covered with turf
 - One who does things
 - Armadillo
 - Seaport (Fr. W. Afr.)
 - American Indians
 - A shadow



Saturday's Answer

43. Adverbial particle
45. Constellation
47. Music note

DAILY CRYPTOQUOTE—Here's how to work it:
is LONG FELLOW
A X Y D L B A A X R

One letter simply stands for another. In this example A is used for the three L's, X for the two O's, etc. Single letters, apostrophes, the length and formation of the words are all hints. Each day the code letters are different.

A Cryptogram Quotation

F M F B M C M V A N F J J W A G W H B B
Z A N P B M W C C Y X C S M V A B H X A M O
C X A T I W H T J - M V H G Y A S H O.

Saturday's Cryptoquote: AND LOVE, THAT WATCHED US
EVER FROM AFAR, CAME FLUTTERING TO OUR SIDE—
GOSSE.

Peerless Theatre

Erwin, N. C.

Matinee Admission: Children 15c—Adults 30c
Evening Admission: Children 15c—Adults 35c

SHOWS 10 A. M. FOR THE AFTERNOON SHIFT—ADDITIONAL SHOWS 3-5-7-9

THURSDAY — FRIDAY
CLIFTON WEBB
and
GINGER ROGERS

"Dreamboat"

Also Selected Short Subjects

SATURDAY
(Double Feature)
REX ALLEN and
Koko in

"Old Oklahoma Plains"

also

"Hillbilly Blitzkreig"

with
EUD DUNCAN
and
EDGAR KENNEDY
Selected Short Subjects

STEWART

Thursday & Friday
ROBERT RYAN
IDA LUPINO

in
"BEWARE MY LOVELY"

also
News — Joe McDoakes

DUNN

Today thru Friday
ALAN LADD
DEBORAH KERR

in
"THUNDER IN THE EAST"

also
Latest World News

HARNETT

LAST TIME TODAY
ABBOTT & COSTELLO

in
"LOST IN ALASKA"

also
Sport—Woody Woodpecker

Center View DRIVE-IN

DUNN-ERWIN HIGHWAY
Two Shows Each Night
Box Office Opens 6:30
First Show 7 P. M.

LAST TIME TODAY

"Hoodlum Empire"

starring
BRIAN DONLEVY
and
CLAIRE TREVOR
Also Cartoon

FRIDAY
JOHNNY WEISMULLER
as "Jungle Jim"

"Fury of the Congo"

Also Musical — Cartoon

SATURDAY

HENRY FONDA
in

"The Return Of Frank James"

with
GENE TIERNEY
JACKIE COOPER
also Cartoon

STAR-VUE DRIVE-IN

BENSON, N. C.
HIGHWAY 261 NORTH

IN CAR SEATS

ADMISSION ONLY 40 CENTS
TWO SHOWS NIGHTLY
BOX OFFICE OPENS 7 P. M.

THURSDAY — FRIDAY

"Willie & Joe Back At The Front"

starring
TOM EWELL
HARVEY LEMBECK
MARI BLANCHARD
Also News — Color Cartoon

Officers Installed By Erwin Baptists

Three new Deacons were installed by the Erwin Baptist Church at special installation ceremonies Monday night. They replace three whose terms expired.

New Deacons are Floyd Glover, Alton Stephenson and Gilbert Woodworth, Jr. Those retiring are J. A. Holmes, Roy Cameron and J. C. Pollard.

The Erwin Baptist Church operates its Diaconate under a staggered term system, and three new church officers are elected and installed each year.

The Army medical library in Washington, D. C., is the largest medical library in the country with over 1,000,000 items.

LILLINGTON THEATRE

THURSDAY & FRIDAY

COLUMBIA PICTURES presents
RANDOLPH SCOTT.
HANGMAN'S KNOT

with
BOBBAE REED — Double Feature, 3 — Frank Taylor — Live Action
A SCOTT-GRUBER PRODUCTION — Produced by HARVEY ARNOLD
Written and Directed by ROY ROSSIGNOL
Also Comedy — Cartoon

SATURDAY
(Double Feature)

"I DREAM OF JEANIE"

Also

"Desparadoes Outpost"

Plus Don Dardevil — Cartoon

Fencing Feuding Pits Sheepmen Against Hunters

WASHINGTON (AP)—The old days of feuding and fighting over fences in Wyoming are returning—but this time the action is between sheepmen and sportsmen instead of sheepmen and cattle ranchers.

The fences, on public grazing lands, have started the feud. It really boils down to a preference between sheep and antelope. The barriers which keep the sheep in also hampers the prong-horned antelope.

The antelope can't jump the fences. Their migrations across the sage-brush lands are often completely halted. The antelope may starve when food is exhausted, fall prey to coyotes or dogs, or hang themselves on the fences when they desperately try to climb them.

Difference In Fences
Antelope are big business in Wyoming, according to the National Wildlife Federation. This year 46,000 sportsmen were licensed to hunt the 100,000 antelope roaming the Wyoming plains.

Equipping, housing, and feeding this army of antelope hunters brings quite a bit of cash into the state. So the interest of the sheepmen's opponents is not humanitarian; it is in the interest of antelope steaks and tourist trade.

The prong-horned antelope, quite a speedy critter, could wriggle through the standard cattle fences, which consisted of only three or four strands of barbed wire stretched between posts.

But the sheep-tight fences made of woven wire stop the prong-horn. And these fences have been appearing on public grazing lands, with and without benefit of Bureau of Land Management permits.

PARROT PULLMAN

TOLEDO, O. (AP)—George L. McKesson, industrialist, recently bought a Spanish-speaking parrot in New York City. He took it with him to his bedroom on a train for Toledo, but the bird insisted on jabbering away instead of going decently to sleep as McKesson tried to do. Finally deciding "It was either the bird or me," McKesson bought another ticket and the parrot had its own bedroom for the rest of the trip.

Michigan and Wisconsin are recognizing non-resident as well as resident fishing licenses issued by both states on border waters under terms of a new reciprocal agreement.

LEE'S
24 Hour Road
Truck Terminal

Esso

And Wrecker
Service

PHONES
2727 2052

FAYETTEVILLE HWY.
DUNN, N. C.

CAUGHT WITH YOUR SALES DOWN

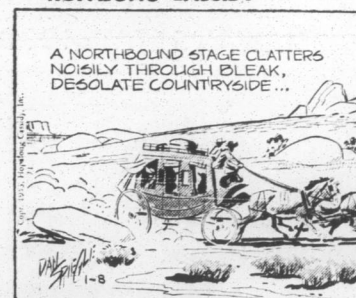
Mr. Merchant, if your sales are down, maybe your customers are slipping away!

Reliable statistics show that the average business loses 30% of its customers through death, dissatisfaction, moving to other areas, etc. Normal gains average 4%, leaving a deficit of 26%. WHAT TO DO ABOUT IT? The surest, and most profitable way to increased sales, is consistent, timely advertising in your newspaper.

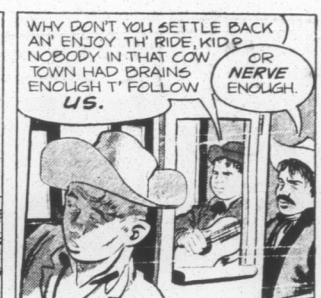
Come in or call! Let us help you plan an advertising program suited to your needs.

THE DAILY RECORD
This Section's No. 1 Advertising Medium.

HOPALONG CASSIDY



A NORTHBOUND STAGE CLATTERS NOISILY THROUGH BLEAK, DESOLATE COUNTRYSIDE...



WHY DON'T YOU SETTLE BACK AND ENJOY THE RIDE, KID? NOBODY IN THAT COW TOWN HAD BRAINS ENOUGH TO FOLLOW US.

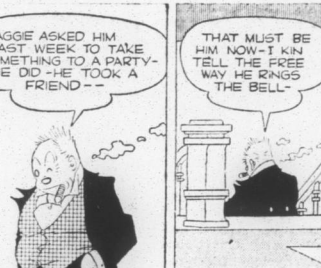


THIS IS THE LONEST STRETCH ON THE WHOLE RUN, BUT I'VE NEVER BEEN HELD UP ALONG HERE YET. THERE'S ALWAYS A FIRST TIME.

BRINGING UP FATHER



MOTHER'S UNCLE HIDEOUS PHONED A WHILE AGO—HE SAID HE IS COMING TO GET HIS PIPE FILLED WITH YOUR TOBACCO—HE LIKES IT—



HE LIKES ANYTHING THAT DOESN'T COST HIM MONEY!!



MAGGIE ASKED HIM LAST WEEK TO TAKE SOMETHING TO A PARTY—HE DID—HE TOOK A FRIEND—

LIL ABNER—by Al Capp



HELP!!—IT'S TRYING TO EAT MY ARM OFF!!



WWHO ARE YOU?



WILD BILL HICKUP!! AH BIN HERE SINCE JANUARY 15TH, 1853!!

SNUFFY SMITH



EBENEZER'S BEEN OUT YONDER PLAYIN' IN TH SANDBOX TH' WHOLE BLESSET DAY, CRICKET!! I THINK IT'S HIGH TIME YE MADE HIM COME IN TH' HOUSE



HAWG!!



HE SEEMS A LITTLE ANNOYED... BUT HE'LL HAVE TO GET USED TO IT! COME ALONG, FATHER!

MICKY MOUSE



ALL RIGHT, EXECUTIONER! YOUR JOB IS DONE! NOW IT'S YOUR TURN!



WELL, FATHER... THAT'S THE LAST OF THE MECHANICAL MEN! WE'RE ALONE NOW!



HURRY... LET'S GO TO THE AIRSHIP AND GET OFF THE GROUND! I'M GETTING NERVOUS...!

BLONDIE



STAND BACK DEAR YOU KNOW HOW FAST DADDY COMES THRU HERE ON HIS WAY TO WORK IN THE MORNING



GOOD-BYE



STAND BACK—IT'S ALMOST NINE BUMSTEAD WILL BE COMING IN HERE LIKE A CANNON BALL IN A FEW SECONDS

NANCY—By Ernie Bushmiller



I JUST GOT BACK FROM THE MOON AND THE MILKY WAY



BEEN FLYIN' A MILLION MILES A MINUTE, ZIGZAGGIN' THROUGH THE BIG DIPPER AND CHASIN' COMETS



JW ABOUT A RIDE WITH ME? NO, THANKS

DICK TRACY



YES, THE CABLE HOOK-UP IS ALMOST COMPLETED! DETROIT, NEW YORK AND CHICAGO.



COME INTO OUR OLD SHOWUP ROOM.



SIMULTANEOUS SHOWUPS BY TELEVISION IN THREE CITIES!