

+ Sanitary Scores +

M. H. Canady, Sanitary Officer for the Harnett County Health Department, has released for publication the following scores for Cafes, Meat Markets, Abattoirs, Poultry Processing Plants, Frozen Food Lockers, Hotels and Dairies:

MARKETS
Grade "A"—Alphin Bros. Mkt. Rt. 4, Dunn, 90.5; Bethune Bros. Mkt. Bunnlevel, 90.5; Byrd's Farmers Supply Mkt. Bunnlevel, 90.5; Carl's Mkt. & Groc. Erwin, 92.0; City Coats, 95.5; Coats Super Mkt. Coats, 90.5; Coats Variety Store, Coats, 90.5; Colonial Store, Erwin, 80.5; Community Store & Mkt. Erwin, 90.5; Crawford & Son Mkt. Ancler, 90.0; D & S Mkt. & Groc. Lillington, 91.0; Ennis & Son Mkt. Erwin, 82.0; Farmer's Exchange, Ancler, 91.0; Floyd's Mkt. Dunn, 80.0; Gilbert's Groc. & Mkt. Dunn, 80.0; Gilme's Groc. & Mkt. Coats, 90.0; Holmes & Sons Mkt. Dunn, 80.0; Holme's Mkt. & Groc. Erwin, 80.5; Horrell's Mkt. & Groc. Erwin, 80.5; Jackson & Jackson, Dunn, 90.0; Joe's Groc. & Mkt. Dunn, 90.0; Johnson & Bryan, Lillington, 80.0; Lee's Cut-Rate Groc. Dunn, 80.0; Lee's Groc. & Mkt. Dunn, 80.0; Manum's Mkt. Ancler, 90.5; Norris Mkt. & Groc. Dunn, 80.0; Pearly Wines Mkt. Dunn, 80.0; Pine Food Store, Dunn, 90.5; J. B. Raynor's Mkt. Ancler, 90.5; Marlon Smith's Mkt. Dunn, 90.5; Casper's Mkt. Dunn, 92.0; J. Alvin Tate's Groc. & Mkt. Rt. 1, Dunn, 90.5; Three Star Groc. Erwin, 90.0; Tucker's Mkt. Lillington, 81.0; Twin City Mkt. Dunn, 81.0; Wade's Mkt. & Groc. Dunn, 80.0; Warren's Trading Post, Dunn, 82.0; Wee's Mkt. & Groc. Dunn, 81.5; Womble's Food Store, Lillington, 81.5.
Grade "B"—Allen & Jones Mkt., Rt. 4, Dunn, 86.0; Beak's Mkt. Erwin, 83.0; Brown's Groc. & Mkt. Erwin, 80.0; Riddle Groc. & Mkt. Bunnlevel, 80.0; City Mkt., Ancler, 81.5; Community Service Station, Dunn, 89.0; Community Supply Co., Orange Springs, 85.5; Dunn Dairy Mkt., Duke's Creek, 95.5; Dunn Dairy Store, Dunn, 84.5; M. E. Ennis, Duke's Creek, 83.0; Godwin's Groc. & Mkt., Duke's Creek, 86.0; Houder's Mkt. & Groc. Erwin, 82.0; Idea's Mkt. & Groc. Dunn, 81.5; J & W Mkt., Dunn, 82.5; Jackson's Mkt., Ancler, 85.5; C. M. Johnson's Mkt., Rt. 1, Lillington, 83.5; Johnson's Mkt. & Groc., Lillington, 81.0; Lee's Mkt. (Gaston), Dunn, 80.0; Welch's Mkt., Dunn, 80.0; Mt. Airy Groc. & Market, Duke's Creek, 81.0; Querman's Mkt. Dunn, 85.5; Paul, Inc.'s Groc. Erwin, 81.0; West's Mkt. Erwin, 84.0.
Grade "C"—Adams' Mkt. Pt. 2, Ancler, 74.5; Riddle Mkt. & Groc. Lillington, 75.5; R. R. R. Mkt. & Groc. Dunn, 71.5; R. Erwin Groc. Erwin, 70.5; Roscoe Raynor's Mkt. Erwin, 70.5.
RESTAURANTS & FOOD HANDLING ESTABLISHMENTS
Grade "A"—Baldwin & Mottet, Ruidies, Dunn, 94.0; Rio-4 Restaurant, Dunn, 92.5; B & W Frozen Custard, Erwin, 91.5; City Cafe, Ancler, 90.5; Dunn Pharmacy, Dunn, 90.5; Dunn-Rite Bakery, Dunn, 90.5; Eddie's Drive-In, Lillington, 90.0; G & R Restaurant, Lillington, 90.5; Harold's Grill, E. Erwin, 90.0; Flash Life Restaurant, Lillington, 90.0; Hill Top Grill, Olivia, 91.5; Home's Drive Store, Dunn, 90.5; Hale Hill Grill, Lillington, 91.5; John's Place, Erwin, 89.0; Johnson's Restaurant, Dunn, 81.0; Keene's Drive-In, Coats, 90.0; Lefavotta Grill, Pinesaw Swings, 91.5; Ma's Kitchen, Rt. 4, Dunn, 94.0; Melody Drive-In, Rt. 3, Lillington, 90.5; Mrs. H. G. L. Dunn, 91.0; McDaniel's Grill, Lillington, 90.0; McNeill's Sundries & Appliances, Olivia, 90.0; Norris Frozen Custard, Dunn, 95.0; Pablo Dining Room, Rt. 3, Dunn, 91.0; Pate's Cafe, Erwin, 90.0; Pine View Inn, Rt. 6, Sanford, 97.5; Prison Camp No. 603, Lillington, 90.0; S & S Grill, Dunn, 90.0; Soda Shop, Dunn, 90.5; Spring View Cafe, Chalybeate Springs, 90.0; The Kitchen, Coats, 91.0; Town Grill, Dunn, 90.0; Tutor's Cafe, Fuquay Springs, 90.5; Two Way Restaurant, Lillington, 90.0; Village Grill, Dunn, 91.0; Walgreen's Drug Store, Dunn, 93.0; Zola's Barbecue, Erwin, 85.0.
Grade "B"—A & W Tavern, Dunn, 84.5; Angler Bus Station, Ancler, 80.0; Bus Station Lunch, Lillington, 81.5; C & L Grill, Dunn, 80.0; Charlie's Drive-In, Dunn, 83.5; Clyde's Grill, Rt. 3, Dunn, 83.0; Cohen's Lunch, Dunn, 82.5; College Grill, Bule's Creek, 84.0; Community Cafe, Rt. 2, Lillington, 80.0; Howe's Coffee Shop, Dunn, 82.5; Erwin Bus Station, Erwin, 80.5; Ed & Bill's Barbecue, Rt. 5, Dunn, 90.0; Farmer's Cafe, Dunn, 80.5; Florence's Lunch, Dunn, 84.5; Gray's Grill, E. Erwin, 80.5; Harold's Grill, Dunn, 84.5; Hodges Grill, Dunn, 91.0; Johnny's Restaurant, E. Erwin, 86.0; Johnson's Grill, Dunn, 81.5; Len's Grill, Lillington, 80.1; Mike's Place, E. Erwin, 80.0; Norris Cafe, Coats, 84.0; Olive's Grill, Rt. 6, Sanford, 86.5; Pine State Cafe, Lillington, 87.0; Porter's Restaurant, Dunn, 80.1; Rabbit's Grill, Dunn, 80.0; Richardson's Cafe, Dunn, 87.5; River View Grill, Erwin, 71.0; Service Station Grill, Lillington, 82.0; Thazard's Cafe, Dunn, 80.0; The Chicken Shack, Rt. 1, Dunn, 81.0; The Lost Tavern, Bunnlevel, 80.0; Warren's Restaurant, Dunn, 83.5; Sally Weaver's Cafe, Erwin, 84.0; J. J. Weaver's Cafe, Rt. 1, Dunn, 84.0; Whittington's Cafe, Erwin, 82.0; Bill's Sandwich Shop, Dunn, 75.0; Clark's Grill, Dunn, 75.5; F & W Restaurant, Dunn, 76.5; Green Heights Grill, Lillington, 76.5; Mooney's Cafe, Lillington, 75.5; Moore's Cafe, Lillington, 70.0; R. C. Cafe, Angler, 75.5; South End Cafe, Angler, 71.0.
ABATTOIRS
Grade "A"—Colonial Abattoir, Dunn, 93.0; Hodge's Abattoir, Dunn, 90.0.
Grade "B"—Cambell Colleve Abattoir, Bule's Creek, 80.5; Hayes Abattoir, Coats, 80.5.
Grade "C"—Hammond's Abattoir, Erwin, 70.0.
POULTRY PLANT
Grade "A"—G & W Poultry Plant, Dunn, 90.5; Mary's Poultry Plant, Angler, 91.0; Wimberley Poultry Plant, Ancler, 90.5.
FROZEN FOOD LOCKERS
Grade "A"—Colonial Frozen Food Locker, Dunn, 95.5.
HOTELS, TOURIST HOMES AND CABINS
Grade "A"—Butler's Tourist Home, Dunn, 94.5; Circle Tourist Court, Dunn, 94.5; Colonial Corner Tourist Home, Lillington, 93.0; Cotton Tole Hotel, Dunn, 92.0; Dawson's Motor Court, Dunn, 92.0; Hodges Motor Court, Dunn, 92.5; Ideal Tourist Court, Dunn, 91.5; Lee's Amalea Motor Court, Dunn, 90.0; Ma's Tourist Court, Rt. 4, Dunn, 95.0; Tate's Motor Court, Dunn, 94.0.
Grade "C"—Pine State Tourist Cabin, Lillington, 74.5.
DAIRIES
Ballentine's Grade A Raw Dairy, Varina, Holmes, Grade A Raw Dairy, Erwin; Gaine's Grade A Raw Dairy, Dunn.
PASTEURIZED GRADE A MILK DELIVERED IN HARNETT CO.
Ballentine's Dairy, Varina; Coble's Dairy, Smithfield; Fairview Dairy, Sanford; Gardner's Dairy, Rocky Mount; Mitchell's Dairy, Benson; Pine State Dairy, Raleigh; Southern Dairies, Wilson.
WHOLESALE
J. A. Holmes Dairy, Erwin; Joe & Carson's Dairy, Rt. 2, Angler; Raynor's Dairy, Erwin.



THURSDAY - FRIDAY - SATURDAY END OF MONTH SALE -

THREE SPECIAL DAYS TO CLEAR OUT ALL ODD LOTS OF MERCHANDISE TO MAKE ROOM FOR NEW SPRING MERCHANDISE THAT IS ARRIVING DAILY -

LADIES' SHOES

- 52 Pairs Reg. \$7.95 Dress Shoes - Now \$4.88
- 57 Pairs Reg. \$6.95 Dress Shoes - Now \$3.88
- 73 Pairs Reg. \$4.95 Dress Shoes - Now \$1.50
- 17 Pairs Misses \$3.98 School Shoes - \$1.00

LADIES' ACCESSORIES

- 30 Handbags - Regular \$2.98 - Now 49c
- 23 Pairs Gloves - Regular 98c - Now 50c
- 87 Pairs First Quality Nylon Hose - Regular \$1.15 - Now 2 for \$1.00
- 44 Pairs Nylon Hose - Regular 69c - 25c Pair
- 9 Umbrellas - Regular \$3.98 - Now \$1.00
- 35 Pieces Jewelry - Regular \$1.00 - 2 For \$1.00

LADIES' DRESSES

- 28 Rayon Dresses - Regular \$1.98 - \$1.00
- 33 Cotton Dresses - Regular \$2.98 - \$2.00
- 68 Assorted Rayon Dresses - Reg. \$3.75 - Now \$2.00
- 26 Fall And Winter Dresses - Regular \$5.95 - Now 99c
- 76 Fall And Winter Dresses - Regular \$8.95 - Now \$3.99

LADIES' COATS & SUITS

- 31 Suits - Regular \$16.95 - Now \$5.00
- 2 Coats - Regular \$16.95 - Now \$5.00
- 9 Coats - Regular \$24.50 - Now \$10.00
- 4 Toppers - Reg. \$19.95 - Now \$10.00

LADIES' LINGERIE

- 63 Brassieres - Reg. 98c - Now 59c
- 32 Brassieres - Reg. \$1.98 - Now \$1.00
- 59 Flannellette Gowns - Reg. \$1.98 - Now \$1.00
- 59 Flannellette Gowns - Reg. \$1.98 - Now \$1.79
- 19 SLIPS - Reg. \$2.98 - Now \$1.77

LADIES' HATS

- 114 Fall and Winter Hats - Reg. \$1.98 to \$4.95 - NOW \$1.00

LADIES' SPORTS WEAR

- 17 Skirts - Reg. \$3.95 - Now \$3.67
- 13 Blouses - Reg. \$2.98 - Now \$1.00
- 9 Sweaters - Reg. \$2.98 - Now \$1.77
- 11 Sweaters - Reg. \$3.98 - Now \$2.44

RAYON & NYLON PANTIES

- 15 Pairs Ladies' Panties - Reg. 79c - Now 48c
- 22 Pairs Ladies' Panties - Reg. 79c - Now 59c

COTTON PIECE GOODS

- 149 Yds. Gingham - Reg. 59c - Now 48c yd.
- 200 Yds. Print - eg. 35c - Now 29c yd.
- 160 Yds. Plisse - Reg. 35c - Now 25c yd.

Rayons and Woolens

- 60 Yds. Rayon - Reg. 69c - Now 39c yd.
- 86 Yds. Rayon - Reg. 98c - Now 49c yd.
- 197 Yds. Woolens - Reg. \$2.98 - Now \$1.00 yd.
- 144 Yds. Woolens - Reg. \$3.98 - Now \$1.57 yd.



CHILDREN'S SHOES

- 11 Pairs Children Reg. \$2.98 - Now \$1.98
- 31 Pairs Children Reg. \$1.98 - Now \$1.49
- 4 Girls Leather School Shoes - Reg. \$2.45 - Now \$1.98
- 33 Pairs High Top Shoes - Reg. \$2.98 - Now \$1.98

CHILDREN'S AND INFANT'S WEAR

- 19 Girls' Dresses - Reg. \$2.98 - Now \$1.00
- 87 Girls' Dresses - Reg. \$3.98 - Now \$2.00
- 9 Girls' Toppers - Reg. \$6.95 - Now \$4.00
- 24 Girls' Coats - Reg. \$9.95 - Now \$5.00
- 15 Girls' Panties - Reg. 25c - Now 16c

Shop E. O. M. For Big Values

MEN'S & BOYS WORK CLOTHES

- 117 Men's Chambray Regular \$1.19 Work Shirts - Now \$1.00
- 12 Pairs Men's Work Pants Reg. \$2.98 - Now \$2.39
- 102 Men's Work Shirts - Reg. \$2.98 - Now \$2.48
- 97 Pairs Boys' 8 oz. Overalls - Sizes 14 - 16 - Reg. \$1.98 - Now \$1.00
- 10 Pairs Dungarees - Regular \$1.79 - Now \$1.00
- 15 Boys' Chambray Work Shirts, Reg. 88c, Now 50c
- 44 Boys' Tan Work Shirts - Reg \$1.25 - Now 88c

MEN'S DRESS PANTS, SUITS, SPORT COATS, HATS

- 2 Part Wool Winter Suits, Reg. \$24.50, Now \$5.00
- 4 All-Wool Winter Suits, Reg. \$39.50, Now \$10.00
- 18 Year 'Round Suits - Reg. \$29.95 - Now \$20.00
- 6 Wide Assortment of Sport Coats - Regular \$19.95 - Now \$15.00
- 11 All-Wool Topcoats - Reg. \$29.95 - Now \$13.00
- 22 Dress Pants and Slacks - Reg. \$5.95 - Now \$2.99
- 17 Dress Pants and Slacks - Reg. \$6.95 - Now \$3.99
- 34 Dress Pants and Slacks - Reg. \$8.95 - Now \$6.99
- 8 Felt Hats - Regular \$5.95 - Now \$2.98
- 19 Felt Hats - Regular \$2.98 - Now \$1.77

MEN'S FURNISHINGS

- 7 Slightly Soiled Dress Shirts, Reg. \$3.95, Now \$2.00
- 26 Men's Long Sleeve Sport Shirts, Reg. \$2.98, \$1.19
- 4 Men's Jackets, Reg. \$3.98, Now \$1.00
- 42 Flannel Pajamas, Reg. \$2.98, Now \$2.66
- 83 Wide Assortment of Neckties, Reg. 98c, Now 55c
- 16 All-Wool Sweaters, Reg. \$8.95, Now \$2.77

MEN'S SHOES

- 14 Pairs Men's Oxford Dress Shoes - Regular \$5.95 - Now \$4.95
- 22 Pairs Men's Oxford Dress - Reg. \$7.95 - Now \$5.95
- 8 Pairs Men's Oxford Dress Shoes - Regular \$9.95 - Now \$7.75
- 15 Pairs Men's Work Shoes - Reg \$3.98 - now \$2.98

BOY'S CLOTHING

- 8 Fall and Winter Suits - Reg \$12.95 - Now \$5.00
- 16 Sport Coats - Reg. \$12.95 - Now \$5.00
- 8 Top Coats - Reg. \$9.95 - Now \$5.00
- 14 Dress Pants - Reg. \$2.98 - Now \$1.00
- 22 Jackets - Regular \$2.98 - Now \$2.44

BOY'S SHOES

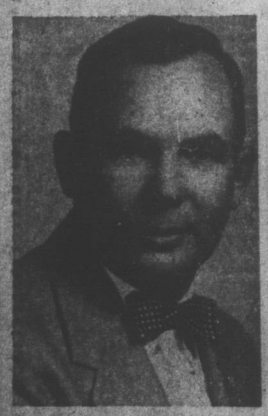
- 11 Pairs Oxford Dress Shoes, Reg. \$4.95, Now \$3.95
- 6 Pairs Oxford Dress Shoes, Reg. \$3.98, Now \$2.98
- 9 Pairs Boys' Work Shoes, Regular \$2.98, Now \$1.98
- 14 Pairs Boys' Oxfords - Reg. \$1.98 - Now \$1.49

BOY'S FURNISHINGS

- 27 Slightly Soiled Sport Shirts, Reg. \$1.69, Now 50c
- 12 Slightly Soiled Sport Shirts, Reg. \$1.98, Now \$1.00
- 3 Flannel Pajamas - Reg. \$2.48 - Now \$1.00
- 42 Pairs Boys' Winter Underwear, Reg. \$1.48 now 99c



FOR SHERIFF



I hereby announce my candidacy for Sheriff of Harnett County, subject to the wishes of the Democrats in the primary on Saturday, May 29th, 1954.

Your support will be appreciated.
A. J. COLLINS

Cutie Is A 'Cootie'



JEANNE O'CONNOR is shown after being selected 1954 "VFW Cootie Queen" during a meeting in New York of the Military Order of Cooties. She will return over the 29th annual VFW Cootie Ball, which will be held to raise funds for rehabilitation and for the veterans' family service workers.