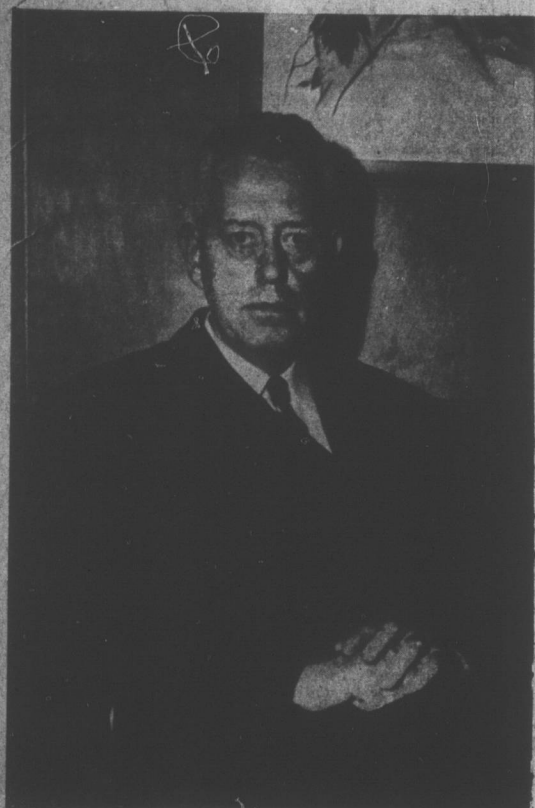


Bank Of Lillington To Open New Home Tonight



MAN BEHIND THE BUILDING — John W. Spears, cashier of the Bank of Lillington, sees the culmination of a long cherished plan when the bank opens for business on Friday in its new home. Spears is the youngest son of the late Harry T. Spears who founded the bank in 1903. Site of the cashier's office is exactly the same place in which the old bank quarters stood 50 years ago. The Lillington banker is the new chairman of Group IV of the N. C. Bankers Association and also counter key banker. This year he was named to the State Banking Commission, the first man from Harnett County ever to serve on the commission. Spears was graduated from the University of North Carolina and also from the University's School of Law. From 1941 to 1947 he was associated with the Wachovia Bank and Trust Company in Raleigh, interrupted by three years service in the U. S. Navy as a Lieutenant Commander. He is married to the former Miss Rachel Wright of Ingold and they have one son, Johnny. As for his position in the bank of his native town Spears says, "I began as janitor, and advanced from bookkeeper to teller. These experiences made me know exactly the type of building we needed for our bank."

Functional Plan Used In Modern Construction

The new building which will provide a home for the Bank of Lillington incorporates in its design and construction one of the finest examples of functional architecture yet erected in Harnett County.

Leif Valand, Raleigh architect, designed the building which covers 3,432 square feet, each foot admirably adapted to the specific purpose for which the building was built, a home for a growing bank. Valand is the same architect who designed Cameron Village.

The brick building is one story in height, but re-enforced steel overhead and thick walls will make addition of another story practical in the future if the need demands. Plate glass, set in stainless steel, extends half way across the front of the bank and its street entrance. An overhanging copper marquee protects the entrance, bordered on the left by a brick planting box already filled with appropriate evergreens and flowering plants.

NIGHT DEPOSITORY

A night depository has been provided in the left wall of the building. This depository, which is the only one in the county will offer banking customers an opportunity to safeguard their funds and checks after banking hours.

The depository is of a special design, built into solid concrete and is burglar proof. Height of the depository and depth of the wall into which it is set, makes it impossible for a burglar to reach it from the outside. From the inside a special lock also protects it and requires the presence of two banking officials to secure entrance.

Terrazo forms the floor of the lobby and in keeping with the modernistic design there is an angled teller counter of birch and hickorywood. This long counter provides



FRIENDLY POW WOW — These familiar faces at the Bank of Lillington are having a conference, as they do most any day, but the meeting is new, the bank's new building which will be displayed to the public for the first time on Thursday from 7 to 9:30 p. m. The men are John W. Spears, center, cashier; and his assistant cashier, Roger Mann, left; and J. Grady Johnson, right.

seven teller windows, where each teller has a black formica working area to lessen eye strain.

Cypress panelling distinguishes the walls of the lobby and secretarial area, and safe deposit customer space. Two inner offices for bank executives and the loan department are walled with mahogany panelling and floors are covered with wall-to-wall green carpeting.

AIR CONDITIONED

The entire building is air conditioned and all ceilings are covered

with acoustical tile blocks.

The money vaults are concrete, re-enforced with steel, artificially lighted, painted and space is also provided for safe deposit boxes.

To the rear of the building are modern tile rest rooms for men, for women, and for janitors. There is also a furnace room which houses the building's air conditioning and ventilation system.

Although an integral part of the bank building, the bookkeeping department, with separate book vault, and the proof department are located in the rear and have a separate entrance. Fluorescent lighting fixtures and high windows give the employees in this department fine working conditions. In addition to the book vault, there is also a large floor-to-ceiling height storage space. Workers in this department may work on a different time schedule than those in the front of the bank.

Attractive color accents are introduced with the lime curtains on the lobby floor, the green rubber tile floors, and in honor of the opening set for Thursday night March 25, the bank sign will be switched on for the first time.

This sign features white enameled letters, backed in green, and like the recessed lights in the marquee, it is controlled by a time clock adjusted to the changing seasons.

NEW YORK (AP) — Playboy Perle Rubirosa settled down here today in a hotel two blocks from the home of his estranged fourth wife, Barbara Hutton, in preparation for a trip to Paris to take up his duties as Dominican minister to France.

Rubirosa, the dime store heiress' fifth husband, arrived at the Teterboro, N. J., airport last night from Palm Beach, Fla., in his converted B52 plane which Miss Hutton reportedly bought him for \$200,000.

"Holy, Holy, Holy," by the student body, Faye Gilliam recited a poem "Invitation To a Beta."

Jean Honeycutt, president of the Beta Club explained to the new members their responsibilities and duties as a member of the Beta Club. Her topic was entitled, "Democracy and Youth Today." The officers of the Beta Club then went among the student body and tapped the ones who met the requirements for Beta membership. Those who met these requirements

were: Virginia Altman, Margie Dorman, Jean Adams, Sue Walters, Virginia Larsen, Ophelia Taylor, Gail Ennis, Beatrice Card, Jean Johnson, James Adams, Herman Williams, Carlton Roberts and Marshall Woodall.

This new membership brought the Beta Club enrollment to 34. The inductees were given a hearty welcome. Mr. H. R. Nettles, science teacher is the Angier Beta Club sponsor. Dot Taylor is the Beta Club secretary.

CONGRATULATIONS
TO
THE BANK OF LILLINGTON
ON ITS BEAUTIFUL NEW BUILDING

We Are Proud To Have Supplied
The Electrical Work and Air Conditioning System For This Wonderful New Addition To Our Community.

McLEOD ELECTRICAL SERVICE

Phone 3616 Lillington, N. C.

Angier School News

The public is cordially invited to attend the wedding of Tiny Oats Rosebud Purvis to Mr. Tom Fliverton Barley Molden, Jr., on Friday, April 2, 1954, in the Angier High School Auditorium at 7:30 p. m.

The bride's parents have looked forward eagerly for many years to this happy occasion when their daughter will be united in a womanly ceremony to Tom Fliverton Barley Molden, Jr.

Rev. Bennis Fishel Jo-Currin will tie the delicate knot with the sincere hope that it will not be broken easily.

Little Miss Petunia Hobnall Rhue will arrive by helicopter this afternoon from Ypsilanti, Nova Scotia, to serve as flower girl in her aunt's wedding.

Miss Sidney Emmy Tate Mann is expected to arrive by A-Bomb from Manitoba, Bulgaria, either Tuesday or Wednesday. She will sing Mendel and Son's wedding march, accompanied by Percy Veer Joel R. Adams at the piano.

Many other notables are expected to attend. Don't miss this happy occasion. Mark the date on your calendar now, Friday, April 2.

ANGIER BETA "TAPPING"
Angier High School Beta Club members held a very impressive service in chapel on Wednesday morning, March 16. Mary Lou Peere read the scripture and Jean Honeycutt lead a prayer. After the song

Congratulations To Bank Of Lillington

We Are Proud To Have Been Selected To Install The Asphalt Floor And Wall Tile

Johnson & Norris
Floor Covering
Sanford, N. C. - Phone 432-J

THE FIRST CITIZENS BANK OF DUNN, N. C.

— Offer Congratulations —

— TO —

THE BANK OF LILLINGTON

The officers and staff of the First Citizens Bank wish the Bank of Lillington congratulations on the formal opening of their new building. This place of business is a definite compliment to the growth of the Harnett community.

THE FIRST CITIZENS BANK
Dunn, N. C.

MILLWORK

For The Beautiful New Home Of The

BANK OF LILLINGTON

Was Furnished By

MAKEPEACE MILLWORK CO.
SANFORD, N. C.

We extend congratulations to this progressive Harnett banking institution on another milestone in its march of progress. We are proud to have been selected to furnish the millwork for this structure.

SEE US FOR MILLWORK OF ALL KINDS
Our quality is tops. Our prices are right.
Free Estimates on Any Job

MAKEPEACE MILLWORK CO.

Sanford, N. C. Dial 35035

Heartiest Congratulations To L. P. Cox Sanford, N. C. General Contractor And To The Bank Of Lillington For Their Selection Of Peden Steel Co. To Furnish The Steel For The Handsome New Bank Building. We Supply Steel For Every Purpose Free Quotations On Request

