



CHAPTER GETS CHARTER — The Lt. Col. Robert De Treville Chapter, Children of the Confederacy, received its charter in a recent ceremony and also installed new officers of the organization. Shown in the photo, left to right, are Mrs. Thomas Ralph of Erwin, senior advisor of the group and third vice-president of the Battle of Averasboro Chapter, UDC; Mrs. Melvin Weeks, president of the local UDC Chapter; and Miss Pam Lee, C of C president. (Record Photo by Russell Bassford)

Wreck Causes \$150 Damages

Damages was estimated at \$150 in a two-car accident Saturday night at 9:30 on Highway 301 a half mile south of Benson.

Highway Patrolman S. M. Johnson said it was raining at the time of the accident, the pavement was wet, and no arrests were made.

He said the drivers and the vehicles they were operating were Emma Ann Varsho, 16, of Route 2, Dunn in a 1967 Chevrolet and Seth Douglas Allen, 20, of Route 1, Benson, in a 1967 Oldsmobile.

The patrolman said both cars were going north at the time of the mishap. He said the Oldsmobile has stopped to wait for oncoming traffic to make a left turn and was struck in the rear by the Chevrolet.

Damages were estimated at \$100 to the Chevrolet and \$50 to the Oldsmobile.

Harnett Cotton Tour Scheduled

On Thursday Sept. 24, a county-wide cotton tour will be host to a large number of farmers who will see several all-practice demonstrations.

At 1 p.m. the group will assemble at the county agent's office, then stops will be made in Hobbs, Rt. 1, Bunnlevel; Bobby the following order: Gerald Wicker, Rt. 2, Lillington; Alsey Johnson, Dunn; Myers Tilghman, Dunn and Earl Stewart Rt. 1, Coats.

Farmers are encouraged to attend the entire tour.

Rev. Tom Freeman Among Leaders

Foes Of Baptist Plan Call Meet

Organized opposition appeared today to the two controversial proposals that will be presented to the North Carolina Baptist Convention in Greensboro at the annual session in November. It was announced that a public meeting will be held in the Eller Memorial Baptist Church in Greensboro on October 1st to "hear the other side" of the proposals.

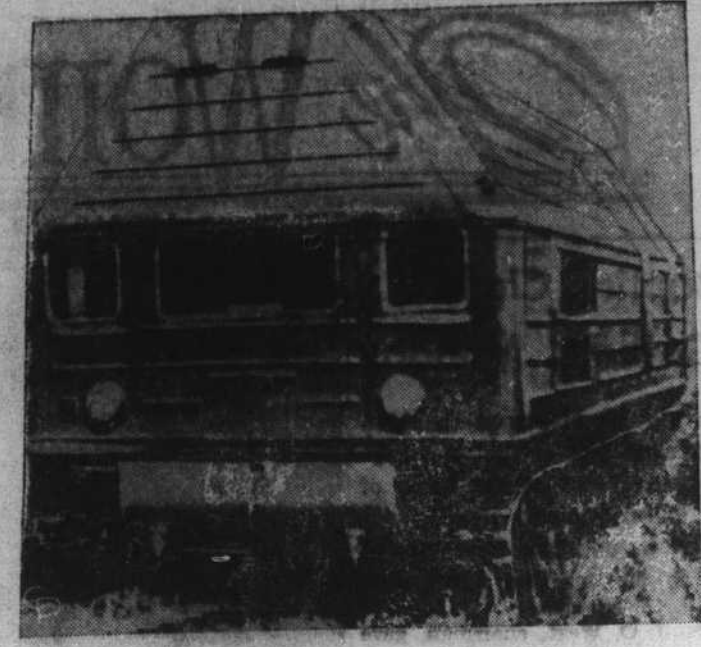
Although the Convention last fall failed to adopt a proposal that would allow Wake Forest College to have some non-Baptist trustees, the Council on Christian Education considered the matter with relation to all seven Baptist Colleges in North Carolina. The result was that the Council has recommended that all the colleges be permitted to have as many as one-fourth of their trustees selected without the requirements of residence in North Carolina or membership in a Baptist Church affiliated with the Convention.

The Council also proposed that all the colleges be permitted to participate in the Higher Education Facilities Act, which is federal aid to education. The General Board, at its July meeting, approved both

these proposals and will bring them before the Convention at the fall session in Greensboro's coliseum.

Opposition first appeared when a group of laymen and pastors met in Asheboro in August to consider the proposals. The meeting in Greensboro October 1st is an outgrowth of this meeting.

In announcing the meeting today, the Rev. Tom M. Freeman, pastor of the First Baptist Church of Dunn, stated that "We have received material from the Council on Christian Education concerning those two proposals. We want to have a careful look at the other side before time to make a decision at the Convention. An effort will be made to clearly present both sides of these vital issues. We are sure that when Baptists are thoroughly informed that they will make the right decision." Baptists who take exception to these two proposals are urged to attend the meeting on October 1st.



MOBILE ATOMIC POWER — This hut-like contraption on wheels is the Soviet's new mobile atomic power station, TES-S. The uranium unit can develop 1,500 kilowatts and works for a year on each loading.

ONLY 6 MORE

EXCITING DAYS

At Wellons In Dunn- Ending- September 30th

Thanks to our many CUSTOMERS who have taken advantage of our biggest SALE in history since Sept. 10. We extend an "open invitation" and a "hearty welcome" to EVERYONE to visit our store during the last 9 days of our 20 day long "EXCITING DAYS" SALE! This is a STOREWIDE SALE offering a sizeable SAVING on EVERY ITEM throughout our ENTIRE STORE! Come in today and make a purchase from our COMPLETE LINES of FURNITURE, APPLIANCES, T.V., CARPET, HEATERS, BICYCLES, TIRES, BATTERIES, TOYS, SMALL APPLIANCES, PAINT, WALLPAPER and OTHER ITEMS too numerous to mention. Hurry, only 9 MORE DAYS left!

Premiere Showing Of 1965 Models G.E. Televisions



CONSOLE TV

- All-channel VHF-UHF reception with the new G-E Synchrolite "82" illuminated tuning system featuring the exclusive "410" permatronic transistor tuner.
- G-E "Fine Furniture" Cabinetry featuring matched wood veneers and hardwood solids in authentic period design.
- Available with G-E "Feather-Touch" Transistorized Remote Control.

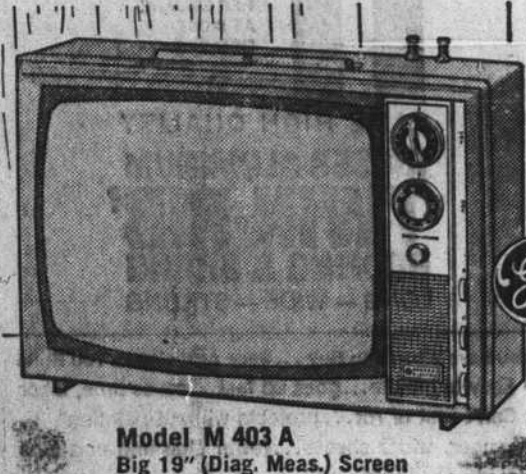
\$269.95



TABLE MODEL TV

- All-channel VHF-UHF reception with the new Tandem-lite "82" illuminated tuning system featuring the exclusive "410" permatronic transistor tuner.
- Automatic brightness control adjusts contrast and brightness to room light for best picture.
- Front controls and front sound — easy to see ... easy to use ... easy to hear.

\$199.95



DESIGNER TV

- All-channel VHF-UHF reception with the new G-E Tandem "82" tuning system featuring the exclusive "410" permatronic transistor tuner.
- Convenient front controls, easy to see, easy to use.
- Front sound directed to you for true fidelity.

\$159.95

Wilbourne Furniture Co.

Your Local General Electric Dealer
LILLINGTON, DUNN
892 - 6324
"We Service What We Sell" Beside Commercial Bank
893 - 3591 Easy Credit Terms

10 CU. FT. Hotpoint REFRIGERATOR



- 50 Lb. Capacity Freezer
- 4 Full-width Cabinet Shelves
- Butter Bin-Vegetable Pan

\$139.95
WITH OPERATING TRADE

Hotpoint GARBAGE DISPOSALS

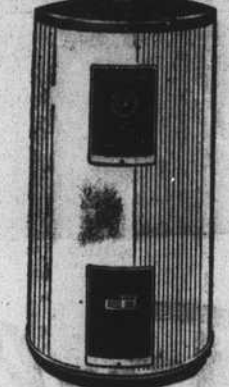
ONLY 2 LEFT!
SPECIAL PRICE
\$29.95

OUR GOAL: "To Continually Serve The Consumer Better With Greater Value For His Dollar."

EASY TERMS
— Weekly
— Monthly
— Full
Up To 36 Months To Pay!

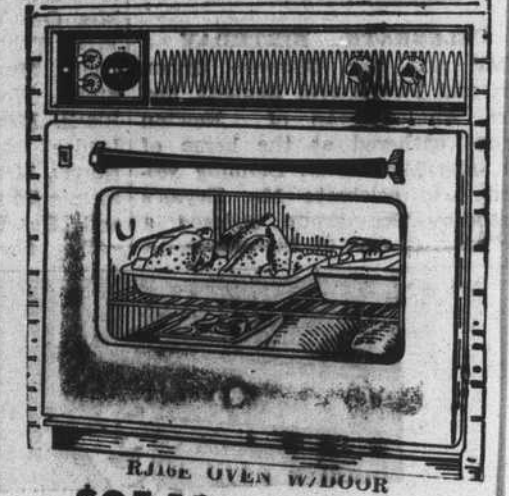
A FREE GIFT TO THE LADIES COME IN & SEE OUR 65 LINES OF APPLIANCES & FURNITURE

Hotpoint WATER HEATER

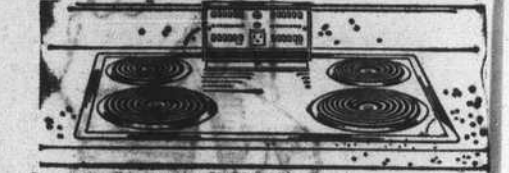


Dip Tube meets Highest Requirements
Special "EXCITING DAYS" Prices!
30 Gal. ROUND \$48.50
40 Gal. TABLE TOP \$65.44
30 Gal. TABLE TOP \$71.95
50 Gal. TABLE TOP \$82.42

HOTPOINT BUILT-IN OVENS "EXCITING DAYS" SPECIAL! AND SURFACE COOKING UNITS



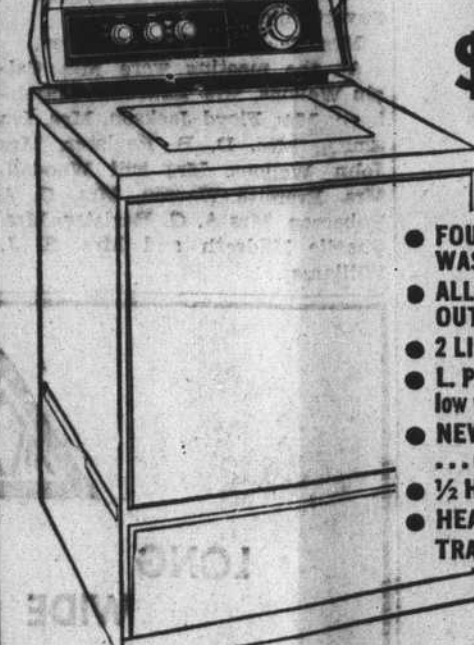
Raise Oven Window
\$95.18 Incl. Tax



Raise Surface Unit
\$64.02 Incl. Tax

NOW WASH LOADS FROM 2 TO 15 LBS. without special attachments!

Hotpoint Silhouette WASHER



Price Start At **\$169.95**
WITH TRADE During "Exciting Days"

- FOUNTAIN FILTER WASHING ACTION
- ALL PORCELAIN FINISH OUTSIDE AND IN
- 2 LINT FILTERS
- L.P.C. ... ends low water pressure troubles
- NEW DIAL CONTROLS ... easy to use
- 1/2 HORSEPOWER MOTOR
- HEAVY-DUTY TRANSMISSION

Model LW-570

Hotpoint Range Adventure SALE

'Exciting Days' Special! Only 9 More Days Left!

FREE 32-PIECE REED & BARTON SILVERWARE
Camelot or Evening Mood Patterns
VALUED AT \$35.95 WITH PURCHASE OF AUTOMATIC TIMER RANGE



SALE PRICES — START AT
\$129.95
WITH TRADE

WELLON'S MERCATILE, Inc
120 S. WILSON AVE. Directly In Front of Pres at Town Hall DUNN, N. C. PHONE 898-7171