



Curt Peters
...Veteran reporter

Curt Peters

Named WSOC-TV

News Director

Asheville - Morton S. Cohn, President and General Manager of Wometco Skyway Broadcasting Company, operators of WLOS-TV, has announced the appointment of Curtis O. Peters as News Director. Peters comes to the station from WSOC-TV, Charlotte, North Carolina, where he served as a news reporter, photographer, writer, producer and editor.

A native of Orange, New Jersey, Peters is a graduate of Johnson C. Smith University, Charlotte. He has had 10 years experience in broadcast news. Peters was also Director of University Relations at Johnson C. Smith University and he was with the Ford Foundation for one year. He brings a wealth of professional experience to his new duties at WLOS-TV.

Peters, his wife Jacqueline and their children, Janene and Damian, will reside in Asheville.

WLOS-TV is a division of Wometco Enterprises, Inc. and is the ABC affiliate serving the Greenville-Asheville-Spartanburg television market.

Betty Feezor Is

Responding To

Treatment

WBTV personality Betty Feezor is reported responding well to initial treatments for the cancerous illness which forced her to suspend her television activity several weeks ago.

Mrs. Feezor was released from Memorial Hospital two weeks ago, and has been receiving radiation treatments as an outpatient at the hospital. She has been able to be reasonably active, and has been attending her church on Sundays.

Betty also spent some time at WBTV one day last week, and has been reading each of the thousands of letters she has received.

Second Ward's

1935 Class To Meet

Saturday Night

Second Ward High School's Class of 1935 will hold a meeting on Saturday, March 26, at 7:30 p.m., at the home of Miss Ruth Morris, on 2520 Tanglebrook Lane.

All class members are urged to be present.

SUBSCRIBE TO THE

CHARLOTTE

POST

CALL

392-1306

JUST

COMPLETE THE

COUPON BELOW

AND MAIL TO:

CHARLOTTE POST

P. O. BOX 97

Charlotte, N. C.

28230

One year \$8.00

13 weeks \$3.00

Payment enclosed

Six months \$5.50

Two years \$14.00

Bill Me Later

Name _____
Address _____
City _____
State _____ Zip _____



HARVEST FRESH

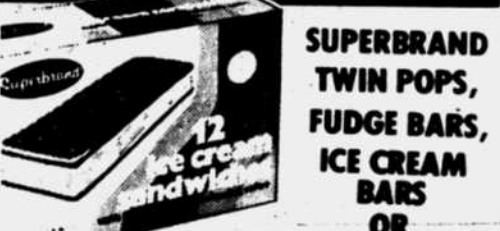


IDAHO RUSSET BAKING POTATOES
10-LB. BAG \$1.29

- HARVEST FRESH IDAHO RUSSET BAKING POTATOES... 5 LB. BAG 79¢
- HARVEST FRESH CARROTS... 2 LB. PKG. 49¢
- HARVEST FRESH WASHINGTON STATE WINESAP OR DELICIOUS RED APPLES... 3 LB. BAG 99¢
- HARVEST FRESH WESTERN D'ANJOU PEARS... 9 FOR 99¢
- HARVEST FRESH CALIFORNIA ORANGES... 9 FOR 99¢
- HARVEST FRESH KILN CURED SWEET POTATOES... 4 LBS. \$1.00
- HARVEST FRESH ASPARAGUS... LB. 99¢
- HARVEST FRESH ROASTED PEANUTS... 2 LB. BAG \$1.29
- HARVEST FRESH FLORIDA WHITE GRAPEFRUIT .6 FOR \$1.00



HARVEST FRESH OKRA
1 LB. \$1.59



ICE CREAM SANDWICHES
COUNT PKG. \$12.79

- SHORTCAKE... 29 OZ. PKG. \$1.19
- MORTON DONUTS... DOZ. 79¢
- SEA-PAK HUSH PUPPIES... 16 OZ. PKGS. 89¢
- SEA-PAK-4-BATTER SHRIMP... 8 OZ. PKG. 79¢
- MORNINGSTAR FARMS BREAKFAST LINKS, PATTIES OR STRIPS... 8 OZ. PKG. 99¢
- EGG WAFFLES... 11 OZ. PKG. 59¢
- MARINER FISH STICKS... 32 OZ. PKG. 99¢
- FARMLAND SALISBURY STEAK OR SLICED TURKEY... 32 OZ. PKG. 99¢
- DIXIE HOME CHICKEN OR TURKEY POT PIES... 5 PKGS. \$1.00



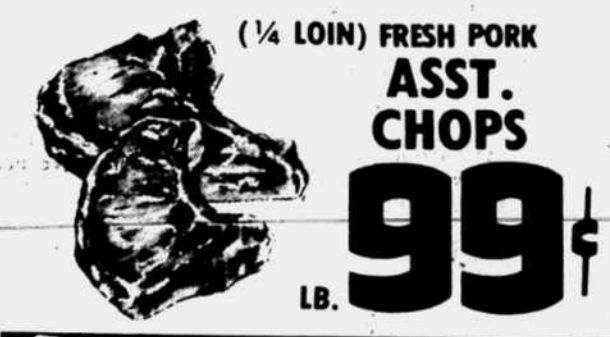
SUPERBRAND WHIP TOPPING
3 9 OZ. CUPS \$1



W-D BRAND ALL VARIETIES FRANKS
1 LB. PKG. 79¢



SUPERBRAND COTTAGE CHEESE
2 99¢



W-D BRAND U.S. CHOICE ASST. CHOPS
1 LB. \$1.99

- CHUN KING SOY SAUCE... 5 OZ. BOTTLE 35¢
- VEGETABLE SPRAY PAM... 13 OZ. CAN \$1.30
- SOAP IRISH SPRING... 3 1/2 OZ. BAR 19¢
- LAND O' SUNSHINE QTRS. BUTTER... 1 LB. PKG. 96¢
- CUTEX REGULAR OR LEMON POLISH REMOVER... 2 4 OZ. BTL. \$1.00
- ALBERTO V-O S... REGULAR \$2.59 VALUE HAIR SPRAY... 16 OZ. CAN \$1.49
- PERSONAL SIZE IVORY SOAP... 4 BARS 55¢
- HEFTY LINERS TRASH CAN... 20 CT. PKG. \$2.29

GREAT GO-TOGETHERS!
ASTOR COFFEE CREAMER 16 OZ. JAR 99¢
ASTOR INSTANT COFFEE 10 OZ. JAR 2.99

THE BEEF PEOPLE

All W-D BRAND steaks and roasts are closely trimmed of excess bone and fat, BEFORE they're weighed and sold. You don't pay steak prices for meat scraps. When you buy W-D BRAND beef, you know what you're getting for your money...more choice meat...less waste.

- HORMEL SLICED BACON... 1 LB. PKG. \$1.19
- FRESH PORK LOIN CHOPS END CUT... LB. 99¢
- FRESH PORK LOIN MARKET STYLE BACKBONE... LB. 99¢
- HICKORY SWEET SLICED BACON... 1 LB. PKG. 99¢

LAMB
W-D BRAND U.S. CHOICE LEG-O-LAMB... LB. \$1.89
W-D BRAND U.S. CHOICE LAMB SHLD. CHOPS... LB. \$1.49



W-D BRAND U.S. CHOICE BONE-IN CHUCK ROAST
1 LB. 69¢

- THRIFTY MAID SLICED OR HALVES PEACHES... 2 29 OZ. CANS \$1.00
- THRIFTY MAID APPLESAUCE... 3 16 OZ. CANS \$1.00
- THRIFTY MAID GREEN LIMA BEANS... 3 16 OZ. CANS \$1.00
- STOKELY CREAM STYLE OR WHOLE KERNEL CORN... 3 17 OZ. CANS \$1.00
- THRIFTY MAID TOMATOES... 3 16 OZ. CANS \$1.00
- VAN CAMP'S BEANEE WEENEE... 3 8 OZ. CANS \$1.00
- ASTOR FANCY SMALL PEAS... 3 17 OZ. CANS \$1.00

CHEK COLA
64 OZ. BTL. \$2.11

- THRIFTY MAID VEG. SOUP... 5 10 1/2 OZ. CANS \$1.00
- THRIFTY MAID CHICKEN NOODLE SOUP... 5 10 1/2 OZ. CANS \$1.00
- CRACKIN' GOOD REGULAR OR UNSALTED SALTINES... 2 1 LB. PKGS. \$1.00
- THRIFTY MAID CORNED BEEF... 12 OZ. CAN 89¢
- STARKIST TUNA FISH... 2 6 1/2 OZ. CANS \$1.00
- QUAKER QUICK GRITS... 2 LB. BAG 46¢
- DIXIE DARLING BUTTERMILK BREAD... 3 24 OZ. LOAVES \$1.00
- DIXIE DARLING BROWN & SERVE FRENCH HARD ROLLS... 3 10 OZ. PKGS. \$1.00

GET ON DOWN TO WINN-DIXIE ...WITH SAVINGS LIKE THESE YOU'LL BE GLAD YOU DID!

W-D BRAND U.S. CHOICE 20-25 LB. AVG. BONE-IN WHOLE N.Y. STRIPS
\$1.29

- W-D BRAND U.S. CHOICE BONELESS SHLD. ROAST... LB. \$1.29
- W-D BRAND U.S. CHOICE BONELESS (FULL CUT) ROUND STEAK... LB. \$1.59
- CUBE STEAK... LB. \$1.59
- W-D BRAND U.S. CHOICE BONELESS RIB EYE STEAK... LB. \$2.99
- W-D BRAND U.S. CHOICE BONE-IN STEAK N.Y. STRIP... LB. \$1.79
- W-D BRAND U.S. CHOICE BONELESS LEAN STEW... 3 LBS. OR MORE 99¢
- W-D BRAND ...3 LBS. OR MORE EXTRA LEAN GROUND BEEF... LB. 99¢

WESTERN CORN FED
CUT AND WRAPPED IN FAMILY PACKS FREE
FRESH WHOLE OR RIB HALF PORK LOIN
14-17 LB. AVG. \$7.99

DIXIE CRYSTAL SUGAR
5 58¢

- JIM DANDY DOG RATION 25 LB. BAG \$4.99
- HEINZ KETCHUP... 32 OZ. BOTTLE 69¢
- DEEP SOUTH STRAWBERRY PRESERVES... 32 OZ. JAR \$1.19
- KRAFT SALAD DRESSING 1000 ISLAND... 16 OZ. BOTTLE 88¢
- LIQUID DETERGENT... 20' OFF LABEL JOY... 32 OZ. BOTTLE 99¢
- DETERGENT... 15' OFF LABEL FAB... 49 OZ. PKG. \$1.19
- BLUE BAY PINK SALMON... 7 1/2 OZ. CAN 88¢
- FRISKIES... ALL VARIETIES DOG FOOD... 5 15 OZ. CANS \$1.00

THRIFTY MAID SELF RISING OR PLAIN FLOUR
5 49¢