

North Carolina Moving Ahead In Transportation

Special To The Post

Raleigh received six.

RALEIGH - Many North Carolinians are discovering that driving alone isn't the only way to get to where they want to go.

Raleigh has ordered two additional buses, Winston-Salem has ordered 20, and the Town of Chapel Hill received funds for 16 buses this year and plan to order five more.

They're looking for alternative ways to save money and conserve fuel supplies.

A new transit system is beginning in Hickory. This system will begin operating buses on the streets next year.

One of the most important of these ways is ridesharing, which not only saves gasoline, but also cuts down on both traffic congestion and air pollution.

In addition to mass transit systems in the cities, rural public transportation systems have progressed by leaps and bounds in coordinating human services transportation.

Sharing a ride can be as simple as two people riding to work together or as complex as the coordination of mass transit system.

Three rural public transportation systems are coordinating specific routes and schedules for special populations. These systems will also make seats available to the general public. They are: Qualla Boundary; Pasquotank, Perquimans, Camden and Chowan (PPCC Health District) and the Watauga, Avery, Mitchell and Yancey (WAMY) Community Action Agency for Watauga County.

State Transportation Secretary Tom Bradshaw said his department has encouraged the development of transit and ride-share programs.

In the area of ridesharing, the state transportation department has received approximately \$630,000 from the National Ridesharing Demonstration Program for a two-year project to coordinate ridesharing in the Research Triangle (Raleigh, Durham, Chapel Hill, Metro-lina (Charlotte area) and Triad (Greensboro, High Point, Winston-Salem) areas.

"These programs are part of our efforts to carry out Gov. Jim Hunt's commitment to developing alternative, energy efficient modes of transportation," he added.

Bradshaw is also chairman of the institutional issues committee of the National Task Force on Ridesharing, which is a committee appointed by President Carter to encourage ridesharing.

"When two people share the ride to work, they cut their commuting costs by half. And when an individual vanpools for a week, his costs are about the same as they would be if he drove along on just one day."

Bradshaw noted that transit ridership figures indicate that public awareness and usage of this form of transportation has significantly increased.

Transit ridership state-wide for each month has been on the rise compared to the previous year since March, 1979.

Transit ridership has increased about 10 percent for each month compared to transit ridership during the same months of the previous year.

Transit systems in five cities are expanding their fleets. The City of Charlotte received 32 new buses last year. The City of Fayetteville put 26 new buses in service and the City of



Carl Flamer, Polemarch of Kappa Alpha Psi, presents a check to Ms. Shirley Farrar, Executive Director of the Afro-American Cultural Center. The check will be used to purchase materials for the Children Arts Program (CAP) (photo by Bernard Reeves)

Leadership Conference To Be Held

The Mecklenburg County Women's Commission and the N.C. Council on the Status of Women, will sponsor a County Governor's Conference on Leadership Development for Women, Friday, May 16, at the Sheraton Center.

The conference, which begins at 8 a.m., will offer participants a broad spectrum of leadership workshops. The workshops will focus on the professional and personal development needs of a variety of women with diverse backgrounds. Workshops sessions are designed to address the needs of the homemaker, women looking at career changes and educational alternatives, and those looking to increase their present job

skills. Claire Shaffner, formerly General Manager for WAYS Radio-WROQ-FM and Chairperson for the Better Business Bureau, will be the keynote speaker at the close of the noon luncheon. Also, Mecklenburg County Commissioner Elisabeth G. "Liz" Hair and Executive Director of the N. C. Council on the Status of Women Miriam Dorsey, will be on hand for the event.

Cost for the conference is \$15 and includes the mid-day luncheon. Child care will be provided for an additional cost of \$5 per child. Checks or money orders should be made to: Governor's Conference on Leadership Development for Women and mailed to

the Mecklenburg County Women's Commission, 316 E. Morehead St., Charlotte, N.C. 28202.

For more information, call Fay Skidmore at the Women's Commission, 374-3210.

National PTA

CHICAGO -- Moving into Phase II of its Urban Education Project, the National PTA has released an "Action Plan" for attacking three urgent problems facing cities and their schools: Inadequate financing of public education, lack of parental or broad-based community participation, and youth unemployment.

The major function of the "Action Plan" will be coalition building.

PACE Supports Governor

Jim Hunt, Carl Stewart

RALEIGH - The Political Action Committee for Education (PACE), the political arm of the North Carolina Association of Educators, this week, is mailing 50,000 postcards to voters throughout North Carolina urging them to support Gov. James B. Hunt and House Speaker Carl Stewart in the May 6 Democratic primary.

"This is the first direct mail campaign we have tried and we are elated by this huge success," said Mrs. Lil Lovings of High Point, state PACE chairperson. "Not only have we stimulated a large number of individuals to get involved in this political campaign, but all of them have spent some of their own money as well."

PACE distributed the blank postcards to members throughout the state. Individual educators wrote messages asking for support of Hunt and Stewart on the cards and addressed them to other voters.

The individuals who sent the postcards paid the postage on them, which amounts to an extra \$5,000 contributed to the Hunt and Stewart campaigns in donations which average \$1 per educator.

About 20,000 of the postcards will be mailed at one time in Raleigh. The other 30,000 will be mailed at various locations throughout the state by PACE local units.

PACE -- which represents some 45,000 educators in 144 school systems, some community colleges, and some universities -- endorsed Gov. Hunt for the Democratic gubernatorial nomination after compar-

ing all candidates' positions on educational issues. Speaker Stewart received the nod for the nomination as Lieutenant Governor after the same process. No endorsements were made in the GOP primary.

Winston Mutual Life Ins. Co.



Dennis Parker March Agent Of The Month

A native of Statesville, N.C. Dennis has been with Winston Mutual Life Ins. Co. since early 1977. He has been outstanding throughout his career, winning several awards and plaques. A consistent agent with constant production.

To qualify for agent of the month Dennis sold \$342,504.00 in annualized premiums and \$14,243.14 in new premium income.

A bachelor that's on the move.

Congratulations Dennis.....

The new Chevrolet Caprice for 1980. We made it right for more family mileage.

New technology is what makes the Chevrolet Caprice a great family car for the '80s. A standard 3.8 liter V6 engine offers the highest EPA gas mileage estimate ever in a full size Chevrolet.

That gives you 450 miles estimated driving range and 650 miles estimated highway driving range. The greater the driving range the fewer the fuel stops. The Caprice's new aerodynamic shape and easy rolling tires contribute to its impressive fuel economy. Even though Caprice has been reshaped, it still offers six-passenger roominess, ride and comfort. It even has more useable trunk space than last year. Plus new anti-corrosion protection and engineering advances that make it a great family car to own. See one now at your Chevrolet Dealer. We think it is right for the '80s. You will too.

Remember: Compare the boxed estimated mpg to the "estimated mpg" of other

cars. You may get different mileage, and range, depending on how fast you drive, weather conditions, and trip length. Your actual highway mileage and range will probably be less than the highway estimates. Driving range estimates were obtained by multiplying the EPA mileage estimates by the car's 25 gallon fuel tank capacity. The new Chevrolet is equipped with GM-built engines produced by various divisions. See your Chevy dealer for details.

18 EPA EST. MPG	450 EST. DRIVING RANGE
26 HWY. EST.	650 HWY. EST. RANGE

Alumni Plans

Scholarship

Dinner

The South Carolina State College Alumni Association's Charlotte Chapter will hold its third annual scholarship dinner on Friday, May 2 at 7 p.m. at the Belmont Community Center.

The scholarship fund dinner proceeds will help worthy students attend the school.

Issac Arnold, assistant football coach and assistant basketball coach, will be the keynote speaker. He will discuss the school's involvement in the Mid Eastern Athletic Conference.

Clarrissy Knox is President of the Charlotte Chapter.

Tickets may be obtained from William H. Blakeney, the National Alumni Association President. They are \$5 per person.

Blakeney is principal of Coulwood Junior High School and has been active in the Alumni Association for a long time. He may be reached at 399-6772.

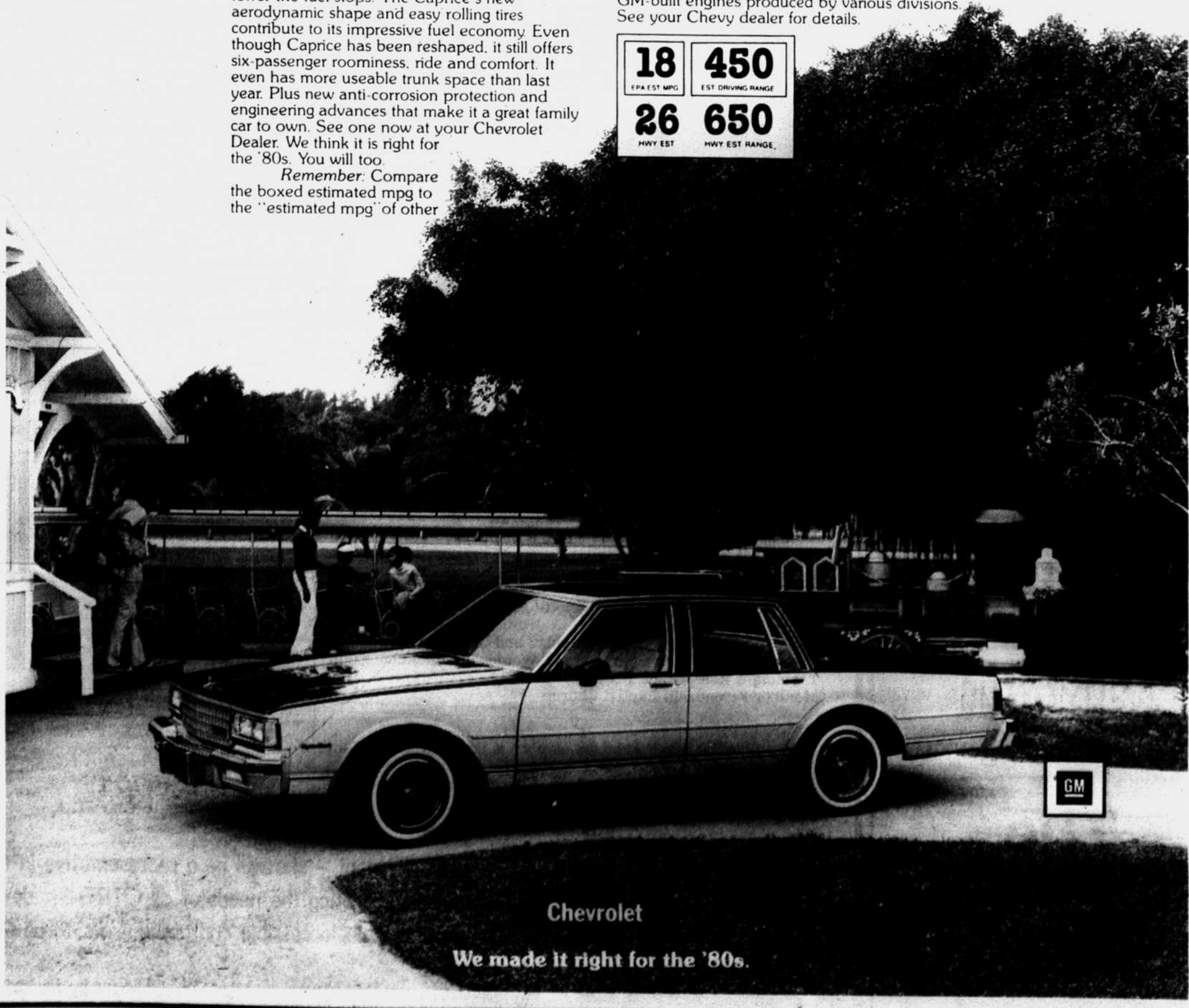
Gastonia Gusto

Run Will Be

Held Saturday

The members of the Gastonia Run Club have joined forces with Schlitz, Six Filled and WSOC-FM to produce the May 4th "Gastonia Busto Run for United Cerebral Palsy of North Carolina." The Club's members, including Jim McHenry and Tom Richie, the group's co-chairpersons for the event, will provide the volunteer force necessary for a smoothly run activity. If you have any questions about the Run, call the United Cerebral Palsy Campaign Office at 375-8612.

Pick up your registration forms now at any sporting goods store in Charlotte or Gastonia or any one of the Pizza Hut locations in these two cities.



Chevrolet

We made it right for the '80s.

