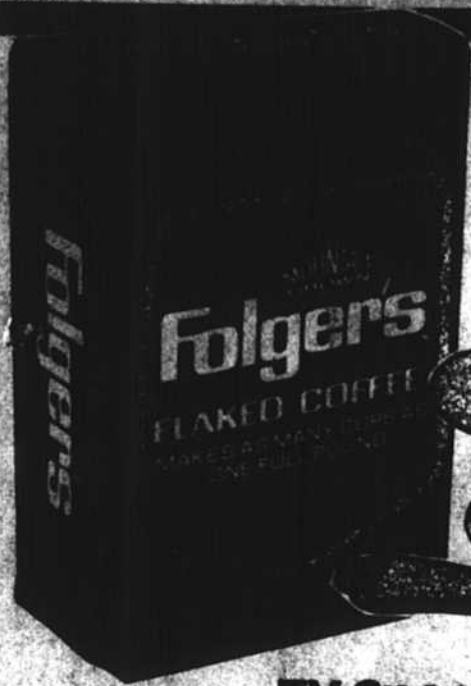


# WHEN YOU SHOP TO SAVE, BI-LO SHOP BI-LO!

This Ad Good Thru  
January 14th.

## Save \$14.23 When You Shop This Ad!

### WAKE UP TO THE FRESH TASTE OF BREAKFAST WITH GOOD MORNING SAVINGS FROM BI-LO . . .



TV Special  
13 oz. Bag Folgers  
**Flaked Coffee**

**\$1.39**

Vacuum Pack  
SAVE 40C

Limit 1 w/\$7.50  
order or more

TV Special  
5 lb. Bag  
BI-LO Granulated  
**Sugar**

SAVE 61C

**88¢**

Limit 1  
w/\$7.50  
order or more

TV Special  
Cans of 10  
**Hom-Maid  
Biscuits**

**6/79¢**

SAVE 10C

### TRY A REFRESHING, FROSTY DRINK . . .

Simply blend fresh bananas with  
milk, ice, and BANANA FROST®.

Select Golden  
**Bananas**

**4/99¢**

lbs.

2 oz. Libby's Drink Mix  
Banana Frost . . . . . 69C

### U.S.D.A. CHOICE ROUND STEAK GIVES YOU MORE CHOICES FOR DINNER.

Use this versatile cut of meat in your favorite  
stew, in a casserole or for some good old-  
fashioned Country Fried Steak. Or have us  
ground it for you, at no charge.

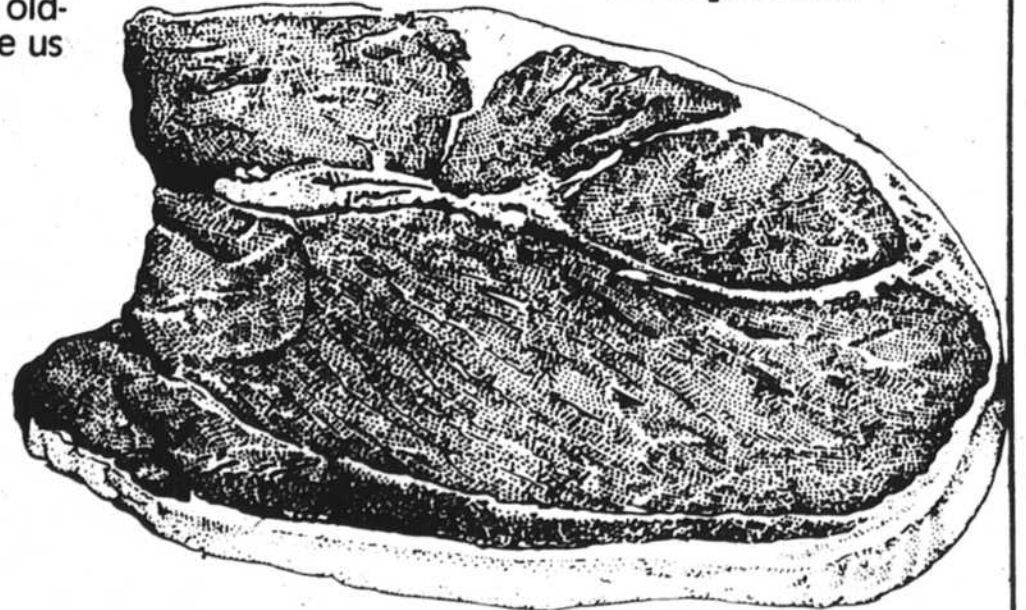
U.S.D.A. Choice  
Full Cut Boneless  
**Round Steak**

**1.59**

lb.

SAVE \$1.40 lb.

TV Special



California Plump  
**Red Grapes** lb. **77¢**

Julcy Large  
**Fresh Pears** lb. **44¢**

California All Green  
**Broccoli** . . . Jumbo Size . . . bch. 99C

Slicing or Stewing  
**Yellow Onions** . . . . . 3 lb. Bag 99C

U.S. No. 1 Idaho  
**Russet Potatoes** . . . 5 lb. Bag \$1.39

Fresh 3 lb. or 5 lb.  
Chub Pak  
**Ground Beef**

**\$1.19**

lb.

SAVE 40C lb.

### MAKE DINNER LEAN, DELICIOUS AND EASY.

Fresh	SAVE 30C lb.
<b>Pork Steaks</b> . . . . .	lb. \$1.29
Rib or Loin	SAVE \$1.00 lb.
<b>End Chops</b> . . . . .	lb. 99C
Wilson Whole Pork	SAVE \$1.00 lb.
<b>Tenderloins</b> . . . . .	lb. \$1.99
12 oz. BI-LO	EVERYDAY
<b>Bacon</b> . . . . .	ea. \$1.29
12 oz. Sunnyland	SAVE 30C
<b>Sausage Patties</b> . . . . .	ea. \$1.19

3 lb. Armour or Agar  
Sliced Free

**Canned Ham**

**\$3.99**

SAVE \$3.00 ea.

TV Special

12 oz. 16 Individually Wrapped  
Fisher Sandwich-Mate  
**Cheese Slices**

**69¢**

SAVE 30C



Diet Pepsi • Mt. Dew

**2 Liter  
Pepsi**

**Feature  
Priced!**

10 oz. Cheese, Pepperoni, Sausage, or Hamburger  
**G & W Pizza** . . . . . 59C

8 oz. Ozark Valley  
**Pot Pies** . . . . . 4/99C

2 lb. On-Cor  
**Suppers** . . . . . \$1.39

2 lbs. Banquet  
**Fried Chicken** . . . . . \$2.59