

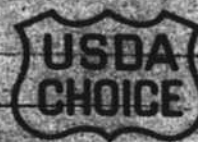
# JERRY'S MARKET

"The Friendliest Store in Town"



"The Store Where Your Dollars Stretch Farther"

"Specializing in fine meats and produce"



4227 Statesville Ave. 1/2 mile beyond I-85 at Anten Ave. 596-8822

Quantity Rights Reserved

Open 7 days a week - Mon.-Thurs.: 9 a.m.-9 p.m.; Fri.-Sat.: 9 a.m.-10 p.m.; Sun. 8 a.m.-7 p.m.

This Ad Good Through Sunday, February 26, 1984



**Turkey**

**Wings 39¢** Lb.

**Necks 3/\$1.00** Lb.

Boneless

**Chuck Roast**

**\$1.59** Lb.

Boneless

**Shoulder Roast**

**\$1.69** Lb.

Boneless

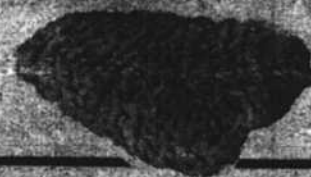
**Stew**

**\$1.79** Lb.

**Rib Eye Steak**

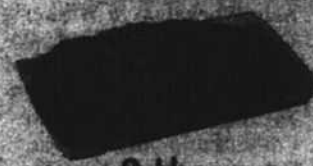
**\$3.99** Lb.

**Cube Steak**



**\$1.99** Lb.

**Ground Beef**



**99¢** Lb.

3 Lbs. or more

Fresh Pork

**Sausage \$1.19** Lb.

**Ground Chuck \$1.49** Lb.

Phillip's

**Pork 'N Beans**

30 Oz. **59¢**

Castleberry's

**Beef Stew**

24 Oz. **99¢**

Campbell's

**Chicken Noodle**

**Soup 3/\$1.00**  
10 3/4 Oz.

Pride

1 Lb. Box

**Saltines 59¢**

Jewel

**Shortening**

42 Oz.

**\$1.29**

Duke's

**Mayonnaise**

Qt. Jar **89¢**

Kraft

**Apple Jelly**

2 Lb. Jar **79¢**

Grade A Medium

**Eggs**

**89¢**

Dozen



**Spam**

Luncheon Meat

**\$1.49**

12 Oz.

JERRY'S

Produce Specials

**Tomatoes 59¢** Lb.

Western

**Lettuce 2/89¢**

**Naval Oranges**

**10/\$1.00**

Carolina

**Sweet Potatoes**

**19¢** Lb.

**Cabbage 29¢** Lb.

**Pink Grapefruit**

Florida **4/\$1.00**