



Adolph Coors Company announces the appointment of Paula Pete as assistant national program manager in the Community Relations Department. In her new capacity, she will be responsible for coordinating activities on a national level in the Black market. Pete brings many years of public relations experience to the nation's fifth largest brewer. Immediately before coming to Coors, she was a marketing representative for Anheuser-Busch Companies, Inc., where she was responsible for increasing sales in the Black community. She has also held positions with the New Orleans Educational Talent Search and WLTV Radio in Tallahassee, Fla. Pete will be based at the brewery in Golden, Colo.

Counting Cuspids

What's the total number of teeth in the student body at Tryon Hills Elementary School? Sound like a question from "Trivial Pursuit"? Well, students at Tryon Hills are scrambling to come up with the best guesses they can muster because the student in each grade who comes closest to the correct answer will win a prize.

That's just one way Tryon Hills is observing Dental Health Month in February. On Friday, February 8, at 12:30 p.m., students will gather to see two special dramas - "Superbrush to the Rescue," presented by kindergarten students, and "Judge Molar's Decision," presented by sixth graders. Prizes for the tooth-guessing contest also will be awarded at the assembly.

"We have a large number of students who need to place more emphasis on dental health," says Doris Asbury, principal. "That's why we're hitting Dental Health Month especially hard." For more information, contact Asbury at 334-7308.

Career Development

"Career Development For Teachers" will be the topic during the meetings of the Charlotte-Mecklenburg League of Women Voters in February.

This topic will include an update on the Charlotte-Mecklenburg Board of Education's new program. Members of the Board of Education staff will participate.

The meetings will take place on February 28. One will be held at 9:30 a.m. at the Board of Education Center Conference Room, 701 E. Second Street. An evening meeting will begin at 7:15 p.m. at Morrison's Cafeteria, South Park. Dinner in the cafeteria will be served at 6:15 p.m.

Oratorical Contest

The Charlotte chapter of the Las Amigas, Inc. will sponsor their annual oratorical contest and recognition program honoring outstanding citizens, Sunday February 24 at 6:30 p.m. at Discovery Place, 301 N. Tryon Street.

To be honored this year will be: Al Johnson - journalism; Vincent Ingram - art; Randy Freeman - business; Dr. Paula Newsome - business; Phyllis Lynch - politics; Kelly Alexander, Jr. - political life; Thomas Moore - music; Rev. James Humphrey - religion; Abigail Flanders - public relations; Dr. E.E. Waddell - community relations and Elizabeth Piersons - community relations.

Subscribe!
Call 376-0496



Individual
INCOME TAX
Returns
Fast Courteous Service
REASONABLE RATES
Freedom Mall
398-0355

Harris Teeter

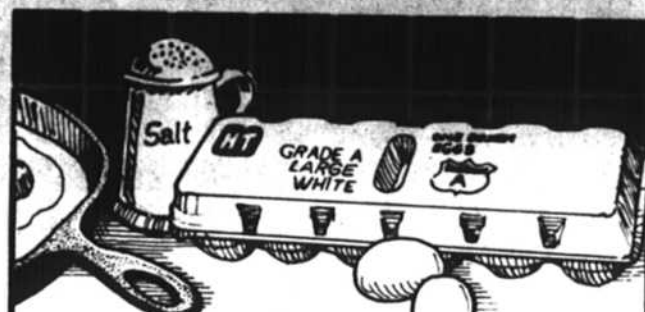
Helpin' out in the kitchen.



More Than 70% Lean "All Size Pkgs."
Ground Beef.....Lb. 99¢
Limit 5 Lbs. Per Customer, Please



White, Assorted Or Prints
Northern Bath Tissue... 4 Pk. 99¢
Limit 2 With \$10.00 Or More Purchase



H-T Grade "A"
Large White Eggs.....Doz. 55¢



Holly Farms
Mixed Fryer Parts.....Lb. 49¢
Limit 3 Pkgs. Per Customer, Please



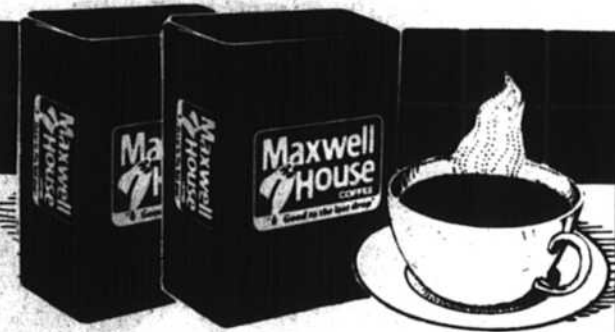
2 Ltr. Non-Returnable Mtn. Dew, Pepsi Free, Sugar Free Pepsi Free.
Diet Pepsi or Pepsi Cola... Btl. \$1.19



California
Iceberg Lettuce.... Head 49¢



USDA Choice Western Beef
Top Or Bottom Round Roast... Lb. \$1.89



Regular, E.P. Or A.D.C.
Maxwell House Coffee... 16 Oz. \$1.89
Limit 1 With \$10.00 Or More Purchase



Medium
Yellow Onions..... 3 Lb. Bag 79¢

QUALITY MEATS

USDA Choice Quality Trimmed Beef "Boneless"
Top Or Bottom Round Steak..... Lb. \$1.99

Assorted Meats
Land O' Frost 2.5 Chipped Meats... Oz. 49¢

Thorn Apple Valley
Hickory Smoked Bacon..... Lb. \$1.69

Chili Dog
Hormel Frank n' Stuff..... Lb. \$1.99

BAKERY CORNER

H-T Hot Dog Or
Hamburger Rolls..... 2 Ct. 89¢

H-T Sandwich Rye..... Lb. 69¢

H-T Italian Bread..... 1 Lb. 69¢

CORK N' ALE SHOP

12 Oz. Cans Regular Or Light
Budweiser Beer..... 12 Pk. \$5.39

St. Wendelinus 750 Liebfraumilch... ML \$1.99

GREAT GROCERIES

Corn Muffin
Jiffy Mix..... 5 8.5 Oz. \$1.00

Chips Ahoy, Chewy Chips Ahoy
Nabisco Cookies..... 18 Oz. \$1.79

Stokely Cut Green Beans... 3 16 Oz. \$1.00

Whole Kernel
Stokely Corn..... 2 16 Oz. 89¢

Snowdrift Shortening..... 3 Lbs. \$1.89

For Dishes
Joy Detergent..... 22 Oz. \$1.09

THE DELI-BAKERY

Virginia Baked Ham.... Lb. \$2.99

Hormel Roast Beef..... Lb. \$3.99

Kahn's
Lebanon Bologna..... Lb. \$2.99

White Or Yellow
American Cheese..... Lb. \$2.59

Chopped Cole Slaw..... Lb. 69¢

Cinnamon Bread..... Ea. \$1.19

Creame Horns..... Ea. 39¢

Above Items Available In Stores With Deli/Bakery Only

PICK OF THE CROP

Extra Large
California Celery..... Stalk 69¢

Red Radishes..... 1 Lb. Bag 49¢

Red Plums..... Lb. 89¢

Washington State
Anjou Pears..... Lb. 69¢

DAIRY & FROZEN

Single Wrap
Kraft Cheese Food..... 12 Oz. \$1.59

Quarters
Parkay Margarine..... Lb. 59¢

Vernedale Ice Cream..... Half Gal. \$1.29

Frozen
Floridagold Orange Juice..... 12 Oz. \$1.09

Light n' Natural
Mrs. Paul's Fish Fillets..... 12 Oz. \$2.29
Crispy n' Crunchy Fish Sticks or Fillets 12 to 15 Oz. 1.79

Assorted Styles
Swanson Entrees..... 5 Oz. 89¢

Prices In This Ad Effective Through Saturday, February 23, 1985 In Mecklenburg County Harris-Teeter Stores Only. We Reserve The Right To Limit Quantities. We Gladly Redeem Federal Food Stamps.

Park Road Shopping Center • Outlet Square • Independence Blvd. at Kings Dr • SouthPark Shopping Center

Central Ave. and The Plaza • South Blvd. and Poindexter Dr. • Sedgefield Shopping Center • Sharon & Fairview Roads • Sharon Shopping Center • S. Sharon Amity and Randolph Rd. • Cotswold Shopping Center • South Blvd. and Seneca Place • Seneca Shopping Center • Albemarle and Delta Roads • York and Yorkmont Roads • Belhaven Blvd. and McClure Circle • Coulwood Shopping Center • N. Graham and Derite Roads • Independence Blvd. and Idlewild Road • Independence Shopping Center • International Way and Providence Road • Providence Square Shopping Center • The Plaza and Milton Road • Hampshire Hills Shopping Center • Freedom Drive and Ashley Road • Freedom Drive Mall • Central Avenue and Sharon Amity Road • Eastland Mall • Carmel Road and Quail Hollow Road • Old Towne Village • Sam Newell Road (Hwy. 51) and John Street • Depot Shopping Center, Matthews, NC • Quail Corners