

'Eye of God' touches on cults, terrorism

Continued from page 1D
doesn't perform in productions where he has to worship an idol, said the subject matter drew him in. "I was a part

of a denomination that for years was considered to be a cult," he said without offering specifics. "The play has really been like a personal expedi-

tion for me."

The play opens October 6 and runs through October 21 at the Actor's Theatre of Charlotte, located at 650 E.

Stonewall St. Performances are, Wednesday and Thursday 7:30 p.m., Fridays and Saturdays 8 p.m. and Sundays 2 p.m. There will be an

opening night reception on October 6 at 7 p.m.

General admission tickets are \$18, \$15 for seniors and group and \$12 for students.

For tickets, call (704) 342-2251.

Wilson's Links concert supports education goals

Continued from page 1D
and explained that this wasn't her first time working with the Links to support education, but she continues the work because of its importance.

"Quality teachers...we need to put music back in the schools, we need to put extracurricular activities back in the schools," she said. "We need to pay our teachers

enough, so we have after school activities at schools. Music is vital and they are taking it away."

A grandmother of four, Wilson realizes not every child will get the education her grandchildren get, but she feels strongly about where equality is key.

"Everybody should be on a level playing field, especially when they're 5. I'm doing this

for all the young people that don't have the opportunities my grand kids have," said Wilson.

Though she's been singing professionally for over 55 years, these days Wilson said she's, "trying to do nothing."

"I've only done about...13 concerts since a year ago November...so I'm not really out here working anymore," said Wilson. Though mem-

bers of the audience would not have believed that, as she sang with crystal clarity, "How Long Has This Been Going On," "Moondance," and Duke Ellington's "Take Love Easy."

Wilson has recorded more than 70 albums, the most recent being "Turn to Blue," but Wilson admits her absence from the stage is by choice.

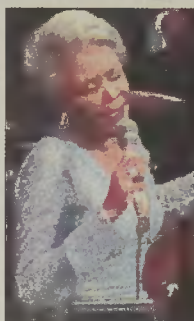
"I want to enjoy my life. I don't want the last time I sing to be because I can't sing anymore."

Though it is hard to imagine a time when Wilson won't be singing, her voice mesmerized the crowd.

When she sang Bonnie Raitt's "I Can't Make You Love Me," the crowd swayed, while people mouthed words with her, despite the occasional cell phone ring that threatened to destroy the mood.

When asked her favorite song to perform, Wilson said there's no such thing.

"It could be different, depending on the day. I don't even have time to think about things like that. You just do what you do, and try to enjoy it."



Nancy Wilson's performance last week in Charlotte helped raise money for college scholarships.

Scarface resonates with hip hop

Continued from page 1D
Scarface t-shirts or have a poster of Al Pacino and his gun hanging on their walls.

One of the reasons it took me nearly 25 years to watch this movie is because I was too caught up in the violence,

not realizing that there was a lesson. Sure, people said there was more to this movie than killing, but seeing as how many rappers had taken their gangster cues from this film, I wanted nothing to do with it.

It was a pretty good film, though. For that time period, the special effects were stunning. On the platinum edition DVD, the soundtrack is enhanced and you can even keep track of how many times there are bullets flying and

the F word being used.

These special effects are nice, but for the five people (I'm not included in that group anymore) who haven't seen this movie, I hope they take away the lesson.

Oprah debuts on XM

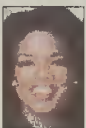
THE ASSOCIATED PRESS

NEW YORK — Get ready for Radio Oprah.

Talk show queen Oprah Winfrey was launching her own channel, Oprah and Friends, on Monday morning on XM Satellite Radio, with shows hosted by her and a collection of popular personalities from her television show, including her best friend, Gayle King, fitness expert Bob Greene and renowned poet Maya Angelou. The station will broadcast 24 hours a day, with highlights of the shows replayed every week-

end.

Guests set for the first few weeks of programming include actresses Annette Bening and Julia Louis-Dreyfus, rocker Jon Bon Jovi, New York Times columnist Tom Friedman and real estate mogul Donald Trump. Winfrey will co-host a show with King, dubbed "The Oprah and Gayle Show," on which they discuss the latest news and gossip.



Winfrey

Woven Worlds gallery

Continued from page 1D

museum just for crafts in Charlotte in the last decade, it's easy to think that crafts considered to be artwork is a recent phenomena. However, some of these craftspeople were recognized as artists as early as the late 1800s.

Louisa Keyser, who worked as a domestic, made baskets and Cohn saw her work as art. Between 1895 and 1925 Cohn made a claim to all of Kayser's work.

Another way this show works is it lets us get a little view of a passionate collector. It would be very valuable to know more biographical information about Clark Field. But we do know that between 1935 and 1966 he traveled more than 125,000 miles collecting something like 1,000 baskets. Collecting anything has been defined as an obsession, an addiction. Gallery notes tell us Field wanted to document Indian culture.

And that is the third per-

spective of the exhibit. It is a document of different North American Indian cultures.

The exhibit continues at The Mint Museum of Craft & Design until December 31.

Hours are Tuesday through Saturday from 10 a.m.-5 p.m. and on Sunday from 12-5 p.m. For additional information, call the museum at (704) 337-2000.

To
Advertise
Call
704
376-0496

Neville CD tepid

Continued from page 1D

sions? "Gypsy Woman" are so good, so memorable, you ask why bother?

Well, because Neville's angelic tenor can make anything sound different and new. There's nothing wrong with any of the performances — each is quite good — but not one adds a thing to the original. I do like his pairing with Chaka Khan on "Let's Stay Together," and his reading of Bill Withers' "Ain't No Sunshine" and Cooke's "A Change Is Gonna Come" are stellar. But there's not enough of those moments to make me love this recording. I like it, but I'd like better.

The Historic Excelsior Club

Open Tuesday-Sunday
921 Beatties Ford Rd. • 704-334-5709



• **TUESDAY ... "FISH FRY"** - Only \$5
Doors Open at 5, Fish Fry at 6pm • Disco at 9pm
Don't forget, come try your hand at a game of "Whist"

• **WEDNESDAY**
"Why Not Wednesday?"
Enjoy an Evening With Friends
September 27th, Doors Open at 7pm
"An all adult environment, 30 and above."

• **THURSDAY "DIRTY THIRTY THURSDAY"**
Let's get this party started right now!
• **FRI & SAT, The Best "DISCO" In Town**
• **SUN ... Enjoy Soft Music and friends!**

Mark Your Calendar for October 7th for
A Cultural Celebration of
INTERNATIONAL BLACK COMMUNITIES

International Buffet • Music • Dancing • History

JET LI IN HIS FINAL MARTIAL ARTS EPIC



From the producers
of "HERO" and
"CROUCHING TIGER,
HIDDEN DRAGON"

JET LI'S FEARLESS

A J. J. YU FILM

YUEN WO PING
THE ACTION CHOREOGRAPHER
BEHIND THE DECADE'S
MOST EXPLOSIVE AND
IMMERSIVE ACTION
IN KILL BILL, THE AVATAR,
AND CROUCHING TIGER,
HIDDEN DRAGON
HAS SAVED HIS BEST
FOR JET LI'S LAST.

"Mastering others is strength. Mastering yourself makes you Fearless." — JET LI

Now Playing Everywhere

NOW PLAYING EVERYWHERE



Coca-Cola
Bottling Company
Consolidated

The 49th Annual
STYLISHLY
HOT

HOSTED BY
Zeta Phi Beta Sorority, Inc.
Delta Zeta Chapter
BENEFIT OF:
Zetas of Charlotte Benevolent
Foundation Scholarship
Fund and Local Charities

Overs Auditorium
2700 East Independence Blvd.
Charlotte, NC

Sunday, October 29, 2006
6:00 pm

TICKET PRICE (\$):
\$25.00 - General Admission
\$35.00 - Reserved Seating

FOR TICKET INFORMATION CONTACT:
Shari Rankin
(704) 358-1235
Visit us on the worldwide web at:
www.zetaaofcharlotte.org



"KEEPING IT REAL WITH FRIENDS AND FAMILY
COCA-COLA REAL"

"Here's How You Can Be Connected"

Submit, in writing, on your organization's letterhead, the title of your event, date, location, contact person and telephone number for your activity to:
Coca-Cola Community Connection
801 Black Satchel Rd., Charlotte NC 28216

Attn: Terry Peterson - Phone 980-321-3542 • Fax 980-321-3566 or Email terry.peterson@ccbc.com