

Greene Science Building

From The Inside . . .



Jerry Hunt, Durham, records the measurements given by transitman Tommy Martin, Norfolk, Va. and chairman James Bradshaw, Clinton.

In this day of space travel, atomic advances, telestar and other technological advances we feel that the sciences and mathematics play an ever increasing part in the development of the academic growth of our students. In our courses we not only attempt to impart knowledge to the student, but to guide him in developing himself academically, personally, socially, and spiritually. Our hope is that the student leaves us a little better informed concerning his physical surroundings, a little more confident in his ability to make sound decisions based on logic, a little more humbled by seeing his smallness in the face of the universe, a bit more secure in seeing himself as an important being in this greatness, and with a good deal more faith in the Maker who created the largest and the smallest with the same detail, importance, and usefulness.

Moved in 1956

In September 1956, the Department of Science and Mathematics moved into the new Greene Science Building. Prior to this, the now Physical Education Building had been the Science Building. The new spacious, fresh building was a most welcome change. The Greene Science Building was made possible by a gift from Mr. and Mrs. Rufus J. Greene, in honor of their mother, Mrs. Mary Olivia Greene, class of 1863.

Chowan began 1956 with an enrollment of 235 students. The Department of Science and Mathematics enrolled 73 students in biology, 40 in chemistry, 4 in physics, and 95 in mathematics courses. These courses were taught by a science-mathematics faculty of three people; Mr. F. M. Johnson, biology and physics; Mrs. L. U. Ross, chemistry; and Mr. L. L. Bishop, Jr., mathematics and engineering.

New Building

The new building was equipped with new equipment in most cases. Very little equipment was brought over from the old Science Building.

Since the academic year 1956-57, Chowan College has increased its student body considerably. In September 1962 we opened the doors with 773 students. With the increased student body the Greene Science Building seems to have "decreased" in size. The one time spacious labs are now inadequate rooms crowded with students and equipment, the roomy lecture rooms, designed for 25 students, now seat 40 to 50 students each. The three private offices for the science-mathematics faculty, now serve as inadequate office space for 8 of the science-math faculty. Some of this overcrowded condition will be relieved when the new classroom building is completed.

To make the existing space more usable in the building, some

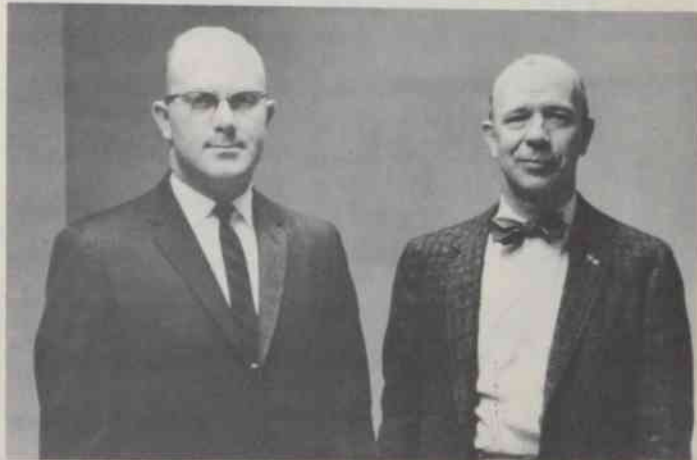
(Continued on the next page)



L. L. Bishop, Chairman, Department of Science and Mathematics



Mathematics Professors—Johnson, Williams and Reavis.



Chemistry and Physics Professors— Jeanes and Glover



Stephen Crowley, Littleton, Guston Franke, Fort Meade, Md., and Sue Cameron, Apex, try to find the difference in weight between blonde, black, and red hair.