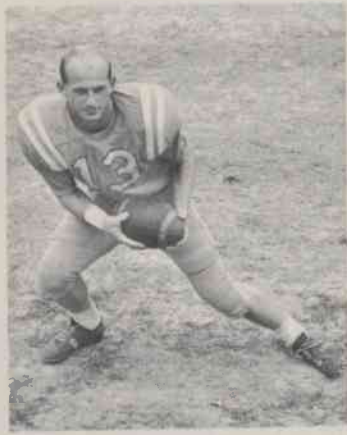


# All Region Ten Conference Team Is Selected



**DONNIE MATTHEWS**

The football coaches of the Region 10 Conference of the NJCAA selected members to represent their schools on the All-Conference team. Jim Garrison's Chowan Braves Region 10 Champions placed four on the team while cellar teams—Lees-McRae had four members, Gardner-Webb three members and Ferrum one member. Unanimous choices were: Don Matthews, Halfback, Chowan; David Whaley, Quarterback, Chowan; Bob Prince, Tackle, Chowan; Lane Hurley, End, Lees-McRae; Jackie Furr, Halfback, Gardner-Webb; and James Harmon, Guard, Gardner-Webb. Other choices were: Bill Hollifield, Guard, Lees-McRae; Larry Clonch, Tackle, Lees-McRae; Fred Palmore, Guard, Ferrum; Bob Blevins, Fullback, Lees-McRae; Tommy Morrow, End, Gardner-Webb; Bill Ballowe, Guard, Chowan.

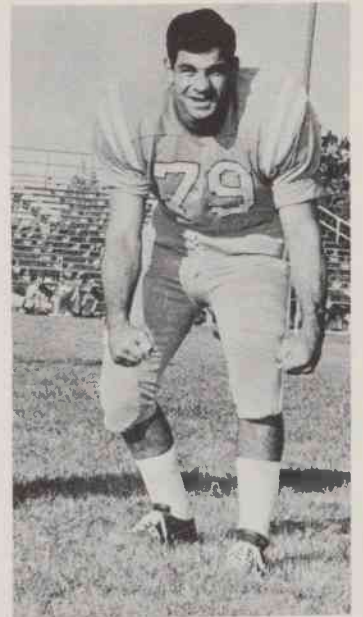
Honorable mentions to the team were: Ronnie Wallace, Fullback, Chowan; Lamar Clark, Halfback, Chowan; Tom Fish, Guard, Chowan; Charles Walker, End, Lees-McRae; Steve Tate, Halfback, Lees-McRae; and Henry Keeton, Halfback, Ferrum.

**DONNIE MATTHEWS**, 5'9", 176 pounds, smashed Chowan's rushing record with a season output of 1,005 yards—carried twice as much as any other Brave (139), but to good advantage, namely a 7.2 yards per carry average per game average of 111.7. Matthews, a speedster from Rocky Mount's Benvenue High, had his best game versus Gardner-Webb at Shelby (Oct. 26), when he rushed for 267 yards in 15 carries, and scored all three Chowan touchdowns in a 20-7 win. He finished the campaign with 8 TD's for 48 points and was second in the Region 10 individual scoring race.

**BOB PRINCE**, another Chowan great is a 207 pound end, who was a mainstay in the defensive line. He spilled backs for losses on 39 occasions and recovered four fumbles during the season. A defensive specialist in pass-rushing, he doubled as offensive tackle, where he was just as impressive. His outstanding job as a pulling tackle on outside sweeps to the right was one of the keys to the success of Chowan's ground game. His quick initial charges and strength made Bob good on line blocking, and above average speed made him excellent on downfield blocking.

**DAVE WHALEY**, Quarterback, 6'0", 186 pounds, heralded as the best quarterback in Chowan history—completed 32-of-69 passes for 578 yards, and nine TD's—rushed for 203 additional (net) yards—wrecked Potomac State in season's third game with 5-of-7 passes completed for 124 yards and two touchdowns, and 54-yard TD run, also 88 yards in 12 rushes—hit 7-of-13 attempts for 192 yards and 3 TD's versus ECC Frosh, also scored on the ground. He came through with the winning TD pass in the final minute for 14-7 win over a stubborn Lees-McRae. Whaley is a native of New Castle, Delaware.

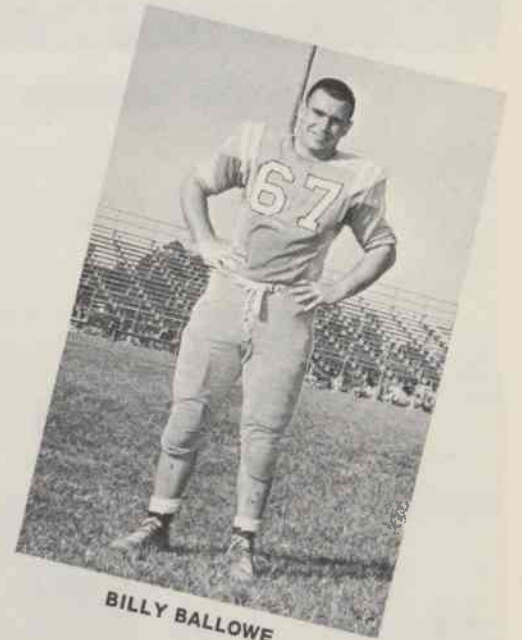
**BILLY BALLOWE**, 5'11", 198 pounds, demonstrated rugged line play and his initial contact was as good as any seen. He became one of the best interior linemen at Chowan. He was the fastest lineman on the squad and was wholeheartedly devoted to the game of contact.



**BOB PRINCE**



**DAVE WHALEY**



**BILLY BALLOWE**



**RONNIE WALLACE**



**TOM FISH**



**LAMAR CLARK**