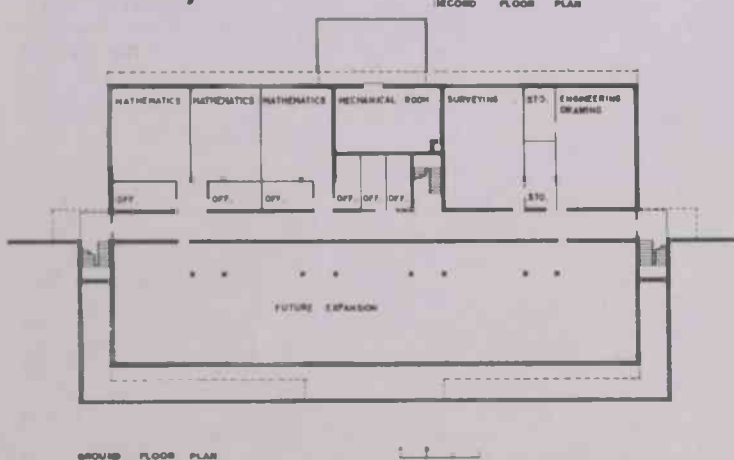
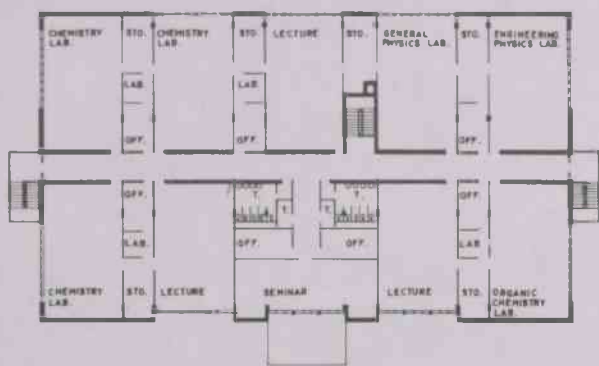
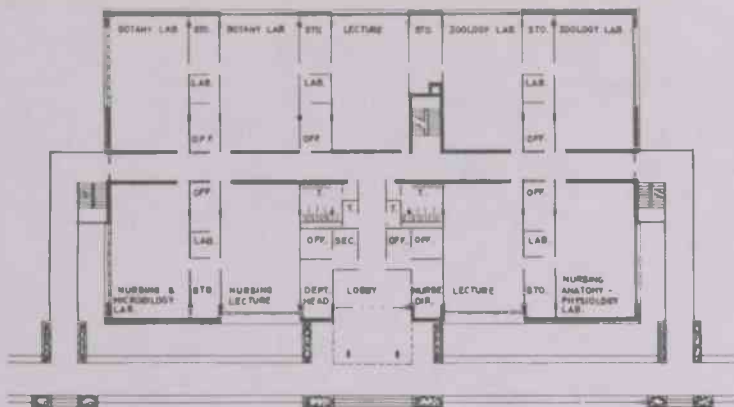


Floor
Plans
of
Proposed
Science -
Engineering
Facility



TRUSTEES—The Rev. Bennie Pledger (nearest to camera) of Colerain, and Charles L. Revelle, Sr., look over material prior to the opening of the joint meeting of the Boards of Advisors and Trustees. Both men pictured serve with the Trustees.



ASSISTING—Cheryl Gassaway of New Bern, a student at Chowan College, helps the Rev. Clarence Godwin, a trustee, with his coat.



PROFESSOR AND ALUMNUS—Professor Daisy Lou Mixon, chairman of Chowan's Religion Department, enjoys luncheon with Charlie Whitley, of Winston-Salem. Mr. Whitley is an alumnus of Chowan College and is presently serving on the Board of Trustees.



HOSTESSES AT MEETING—Many Chowan students served as hostesses during the joint meeting of the Board of Advisors and Board of Trustees. Pictured during a coffee break are left to right: Mrs. Henry Burgwyn, professor at Chowan; Cheryl Gassaway, New Bern; Sharon Vann, Newsoms, Va.; Marguerite Barnard, Chesapeake, Va.; and Joan Pinnell, of Alexandria, Va.