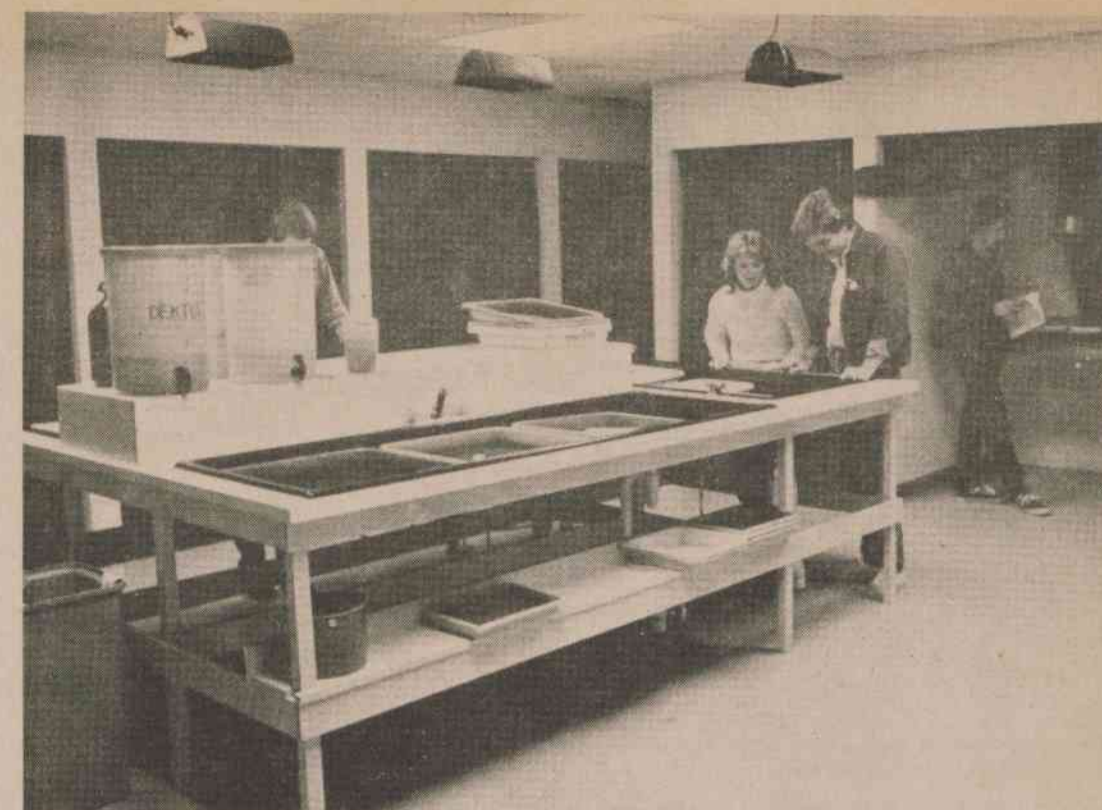


A student operates a MVP editing terminal in the typography laboratory. The unit is used to operate a Mergenthaler VIP phototypesetting computer.

*New graphic communications center now in operation*



*The naming stone remains covered*

The granite stone near the front entrance of the new graphic communications center, which names the facility in honor of a North Carolina newspaper publisher, remains covered with plywood. Dedication ceremonies are tentatively scheduled for April, 1984, during which time the Eastern North Carolina Press Association will be meeting on campus.



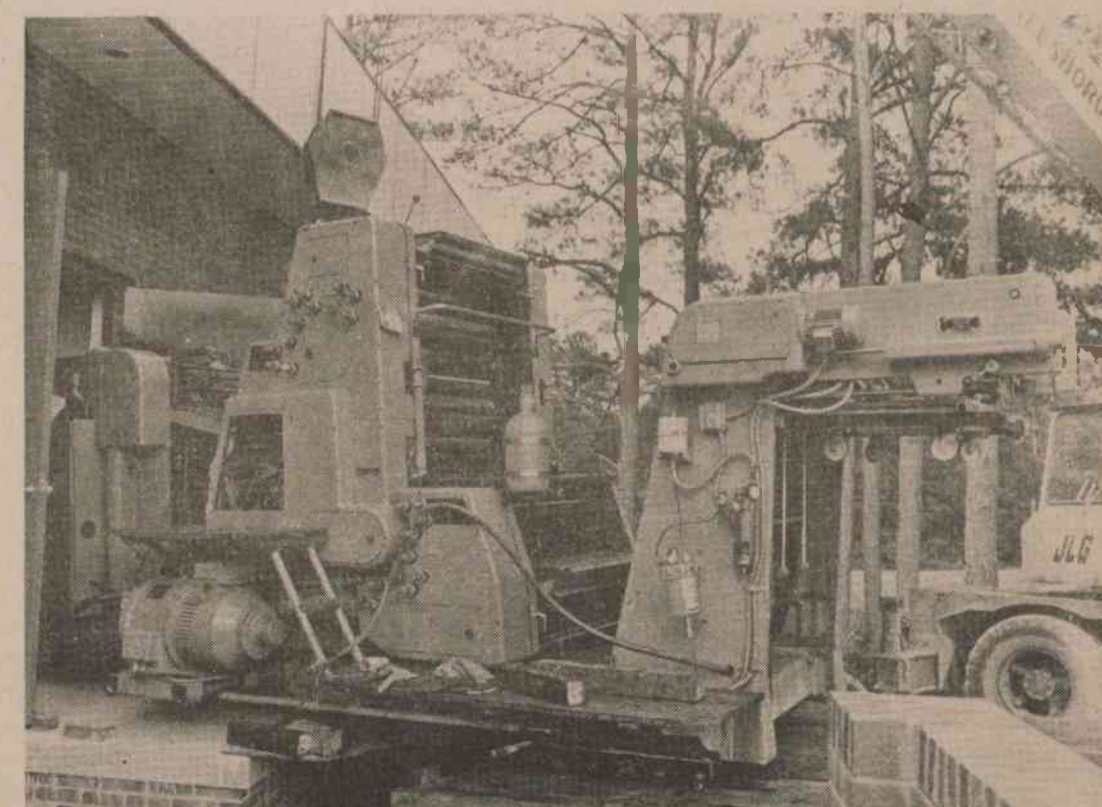
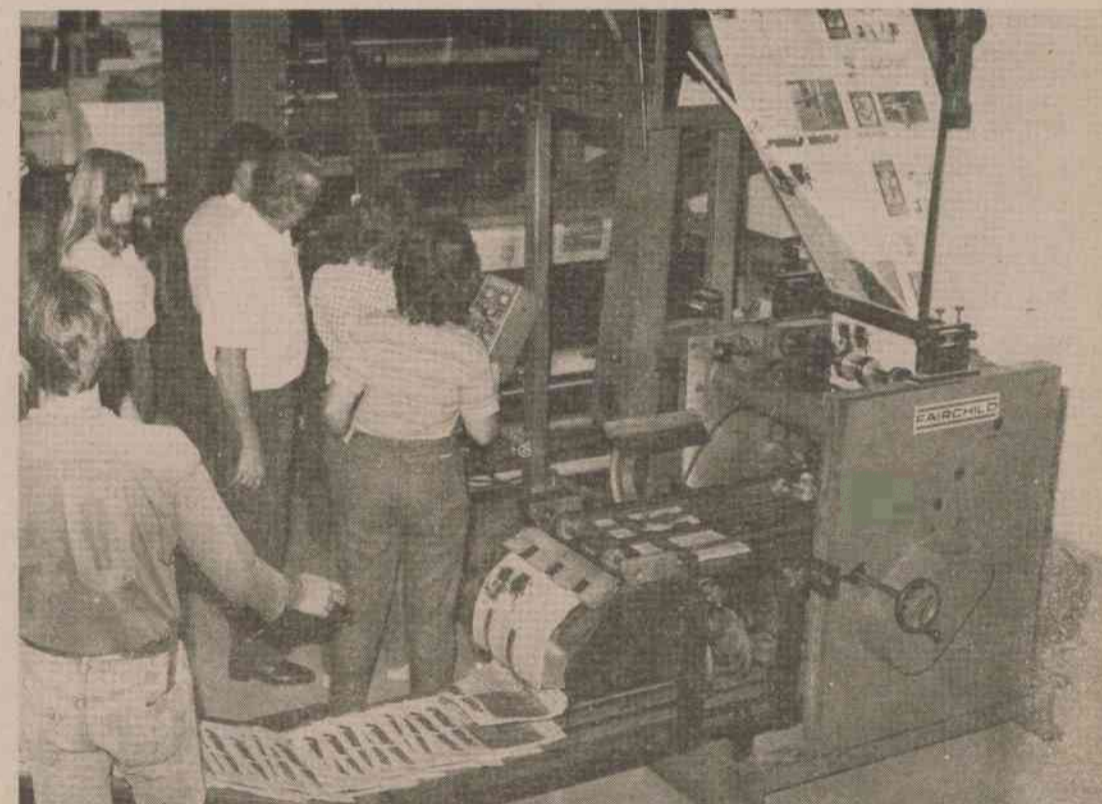
*Color Scanner being installed in lab*

A computerized color scanner has been donated to the School of Graphic Communications, and is being installed in the preparatory offset laboratories for teaching purposes. The color scanner will enhance the courses in color reproduction.

The Department of Graphic Communications has completed its move into the new graphic communications center, and classes in printing technology, photography and typesetting technology are being conducted in the enlarged building. The structure, encompassing 19,000 sq. ft., was constructed by Revelle Builders of Murfreesboro, with the college maintenance department completing all plumbing, wiring, heating, air conditioning and other interior work.

The building includes enlarged laboratories for typography, preparatory offset and press operation on the main floor. Also included are individual offices, a conference room, classroom, publications darkroom and photographic studio. On the lower level, facilities for photography are housed with separate laboratories for color and black-and-white photography. The color laboratory includes eight individual darkrooms, a print finishing room and an equipment check-out area.

The new graphic communications center will be named to honor an outstanding North Carolina newspaper publisher when dedication ceremonies take place in April, 1984.



PHOTOS—A view of the enlarged typography laboratory is seen at top left. The lab equipment includes some of the very latest phototypesetting computers. The black-and-white photography lab is seen at top right. The first run on the three-unit web offset press, seen at right center, was to produce an edition of the campus student newspaper. Students gain "live" experience on the web press in the production of the newspaper as well as The Chowanian. At bottom right, the two-color Solna offset press is being unloaded onto the dock of the new center.