

### ORGANIZATION OF POULTRY OWNERS

The organization of a poultry producer's association, plans for which were laid at a meeting at the court house Monday at which about thirty Lee county poultry producers were present, is the latest step taken by the farmers and farm women of Lee.

Mrs. T. J. McPherson was selected as temporary chairman of the group. A committee to which P. V. Budd, O. T. Thomas and Raymond Knight were appointed will make such investigation on a stable basis and report back to the main group with recommendations Saturday morning. This committee will make an effort to find out how similar organizations are functioning elsewhere. It is probable that a permanent organization may be effected at the Saturday meeting.

County Agent E. O. McMahan explained the object of the meeting, which, he said, was to form a poultry association for the purpose of promoting the raising of better fowls and of encouraging more people to raise poultry as a business proposition.

He said the development of a better market for eggs was an important objective in the work of the association, as there is already an ample market for poultry, but only a limited one for eggs. He suggested the adoption of a trade mark for the products of the association and an arrangement whereby eggs can be stored when prices are low.

Mrs. Thomas J. McPherson was chosen temporary president, Mrs. John C. Watson, vice-president and E. O. McMahan, secretary of the association.

Ownership of around 3,000 fowls was present at the meeting and the hope was expressed that owners of from five to ten thousand fowls might be induced to join the association.

### CARIBBEAN CRUISE

The "Prairie Farmer," a farm paper published in Chicago with general distribution in the Middle West, has set up a personally conducted all expense tour as above scheduled to leave Miami 5:00 P. M., March 7th, the tour to include in the price of \$126.50 from Miami and back to Miami all items of expense, such as transportation, taxis, meals, superior stateroom accommodations, deck chairs, shore excursions and gratuities, but does not include personal items of laundry. The all expense as shown commence with dinner, March 7th to and including luncheon, March 14th.

Leaving Miami on March 7th, there will be dancing and vaudeville aboard the ship; arriving Nassau, Bahamas, morning 8th, shore excursion will include Paradise Beach and trip in glass bottom boats to Hog Island. Steamers leave Nassau 5 P. M. After dinner there will be a masquerade ball, dancing, prizes. March 9th is spent at sea with various amusements enroute. Thursday, March 10th, arrive at Kingston, Jamaica. Sight seeing trip ashore, passengers using the ship as hotel with usual meals.

Shore trip in automobile will include banana plantations, through tropical jungles, Spanish town and Bog Walk; Castleton Gardens. March 11th enroute to Havana with various amusements aboard ship. Saturday, March 12th, sight-seeing in Havana and surrounding country. Sunday is also spent in Havana, the ship being used as hotel. Monday morning, March 14th, arrive Miami. The tour include trip from Miami to Palm Beach and return via rail, an all day outing as guests of the Eastern Steamship Lines.

While this tour is being arranged by and for the "Prairie Farmer," it is open to anyone desiring to make the trip and no doubt quite a few farmers in this territory would like to take advantage of this cruise.

If anyone is interested in this tour, we will be pleased to advise them in regard to railroad and Pullman fares from any point in North Carolina to Miami if they will kindly communicate with H. E. Pleasants, Division Passenger Agent, Seaboard Air Line Railway, Raleigh, N. C.

### HUEY LONG FINDS SENATE A DODDERING SET

The "political paralysis" of the Democrats and the "un-American" actions of Republican leaders were criticized by U. S. Senator Huey P. Long on his second visit to New Orleans since he donned his senatorial toga two weeks ago.

"To think in terms of America I have to get away from Washington," Long said. "Washington is the farthest spot from the United States I have ever seen."

Louisiana's junior Senator declared a large number of Republican officials feel the trouble with America is caused by concentration of wealth, but none of them will do anything to correct the condition.

"The most sorrowful thing which I have found," Long said, "is the political paralysis that is effecting the Democrats."

"Over in the Senate," he continued, "we seem like a whipped rooster, with the victor picking us on the head and all of us standing there, bleeding and taking it, except that some of us take it on ourselves to eat as the outer guard to veil the Republican disciples."

"The world is disgusted with Mellonism, with Hoover and Hooverism, past, present and future, and we've had twelve years of it. But with a country anxiously awaiting for the Democrats to deliver the blow there seems to be plenty of them ready to

step outside in front of the Republican lodge hall and support everything that Mellonism, Hooverism and Daughtrism propose and stand for."

Long declared the Federal Trade Commission was "a stench in the nostrils of the American people, yet with the help of the Democrats in the senate, they are helpless to reconfirm its members."

He said "the stool pigeons of Mellon" had bossed the affairs of the Republican party so long the country now is faced with bankruptcy, disaster and distress.

Long declared his purpose in coming to New Orleans the second time since he took the oath of office two weeks ago was to open a law office and to attend to some family matters.

### LAMBETH SEEKS AID TO FINANCE COTTON SURPLUS

Representative Walter Lambeth, of the Congressional district along with Representative Kerr of the 2nd district and Bulwinkle, of the Ninth district composing a committee of North Carolina delegation in Congress headed by Senator Bailey of North Carolina and Senator Smith of South Carolina, called upon General Dawes and Eugene Meyers, resident and Chairman of the board of the Reconstruction Finance Corporation, on Thursday of last week about a plan, hitherto discussed with the president, to hold of the market 5,000,000 bales of cotton in addition to the 7,000,000 bales that have been placed in storage with the aid of the Farm Board and the banks of the Southern states. This visit was made in the hope that the Reconstruction Finance Corporation would be able to arrange the necessary financing to carry over the surplus of 12,000,000 bales, from one to three years, provided the growers would agree to curtail production during the year 1932.

General Dawes and Chairman Meyers assured the committee that the Reconstruction Finance Corporation would give every assistance consistent with the provisions of the law creating the Reconstruction Finance Corporation and that definite plans would be worked out with the committee just as soon as the organization of the new corporation had been completed and the rules and regulations worked out.

Representative Lambeth stated that he was pleased with the cooperative spirit manifested by these high officials of the new \$2,000,000,000 corporation and that he was sure that General Dawes and Mr. Meyer would pursue a liberal and sympathetic policy in order to extend the maximum aid to relieve the distressful condition of the cotton growers of the South.

### SEEK TO BETTER NIGHT DRIVING OF CARS

"In making an analysis of the situation with respect to blinding and glaring headlights on our highways the State Highway Commission has found that these points stand out clearly," stated Chairman E. B. Jeffries today.

"First, the motor manufacturers have made little or no improvement in headlamp equipment with recent years insofar as the blinding effect experienced in meeting vehicles at night is concerned."

"Second, it is a well recognized fact that only a small percentage of motorists make use of the light tilting and dimming devices provided by the manufacturer."

"Third, it would be very expensive for the State and for the motorist to undertake the periodic testing and adjustment of headlights in an effort to make them comply with the statute."

For over two years the State Highway Commission, through its various agencies, has been conducting an investigation to determine whether there was some practical and economical means whereby automobile headlights might be rendered permanently non-glaring without effecting the vision of the driver. After many months of careful consideration it has been decided to recommend to the motorist a permanent dimming device. One of these has been selected and authorized at a uniform nominal price, and it has now been placed in many hundred service stations and garages throughout the entire state.

For months past highway authorities have been besieged with complaints about the fearful loss of life and property arising from the steadily mounting number of automobile mishaps. The State Highway Patrol, according to Captain Charlie D. Farmer, has received many messages of commendation for its efficient handling of traffic matters. With these words of praise is almost always coupled the plea to do something about the blinding glaring headlight situation.

In keeping with a special ordinance

which has been published throughout the state it is now the duty of the members of the State Highway Patrol force to direct motorists to garages and service stations to have the headlights of their automobiles made non-glaring and to advise the motorist the best and most economical method of having it done.

The State Highway Commission now desires to call on the public to lend its whole hearted support in this effort to improve the night driving conditions on our highways. The motorist will save himself and members of the Highway Patrol much annoyance by immediately having headlights put in order.

### CERTIFIED SEED BEST TO BE PLANTED

Those crop seeds which have been grown under the supervision of the North Carolina Crop Improvement Association and have been certified as to their quality by the Association are the best to plant. Particularly is this true this year when quality must count in the marketing of all farm produce.

"Crop seeds which have been certified by the Crop Improvement Association are of the highest quality because they conform to the standards of the International Crop Improvement Association," says W. H. Darst, director of this work at State College.

"Then, too, certified seed must be of a variety approved by the North Carolina Experiment Station. Before a variety of eligible for certification it must show merit in comparative field trials for a period of at least three years. Certified seed must also pass a rigid field and bin inspection. The first inspection is made in the field before harvest when the crop is studied for purity of variety, the presence of noxious weeds, and for plant diseases."

After the seed has been harvested, cleaned and prepared for market, representative sample are secured and analyzed in the State seed laboratory for germination, purity of variety, weed seeds and foreign materials. The seeds must always conform to high standards of quality, Mr. Darst declares. The inspections are made by seed experts employed by the State and these men must qualify as disinterested in either the crop or the person growing the seeds. All claims as to origin, breeding, manner of threshing and cleaning must be verified by the grower.

Mr. Darst says no other source of seed found on the market is so carefully checked as to quality and value.

### SPRAYING COSTS LITTLE BUT MEANS MUCH

The cash outlay necessary for spray materials needed to produce quality apples and peaches in the farm owned orchards of North Carolina is comparatively little, yet high quality fruit cannot be produced without spraying.

"This is one of the most important orchard operations," says H. R. Niswonger, extension horticulturist at State College. "The cash outlay for spray materials including gas and oil for the power machines has averaged about \$3 an acre for apples and \$1.50 an acre for peaches according to production records kept by a number of orchard men in 1931. Where it is necessary to hire outside labor an additional cash outlay of about \$5 an acre will be necessary. The apple orchards in which these production records were kept varied from 7 to 30 acres with about 50 trees to the acre. The mature trees were somewhat under-sized and ranged in age from 15 to 20 years. There were also some younger trees from 7 to 12 years old."

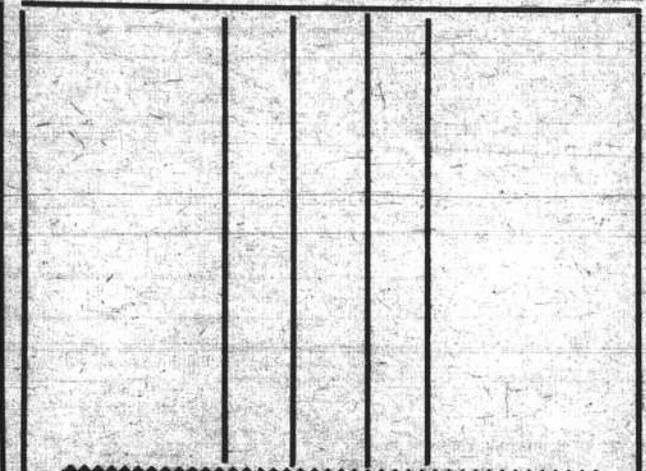
The amount of dilute spray solution used in covering the orchards at one spraying, averaged from 1 1/2 to 2 gallons a tree or about 75 to 100 gallons an orchard. The peach orchards studied by Mr. Niswonger were located in the upper Piedmont region and varied in size from 5 to 12 acres each. The trees were from 4 to 6 years of age. There were 5 to 7 spray applications for the apples and 4 to 5 for the peaches.

Growers sometimes try to cut corners in times of poor prices for fruit, but one cannot save dollars by not spraying, the horticulturist says. During periods of poor prices, quality fruit will move faster than fruit of low quality. Cutting out one or two of the sprays therefore may have the opposite effect from what was expected.

**CUSTOM HATCHING**—Two and one half cents per egg. Nine years experience. Mrs. F. J. Petty, Sanford, Route 3.

**COWS WANTED**—Will pay cash for 25 head young cows with calf by side or near springers. Box 688, Sanford, N. C.

# The Great Open Spaces

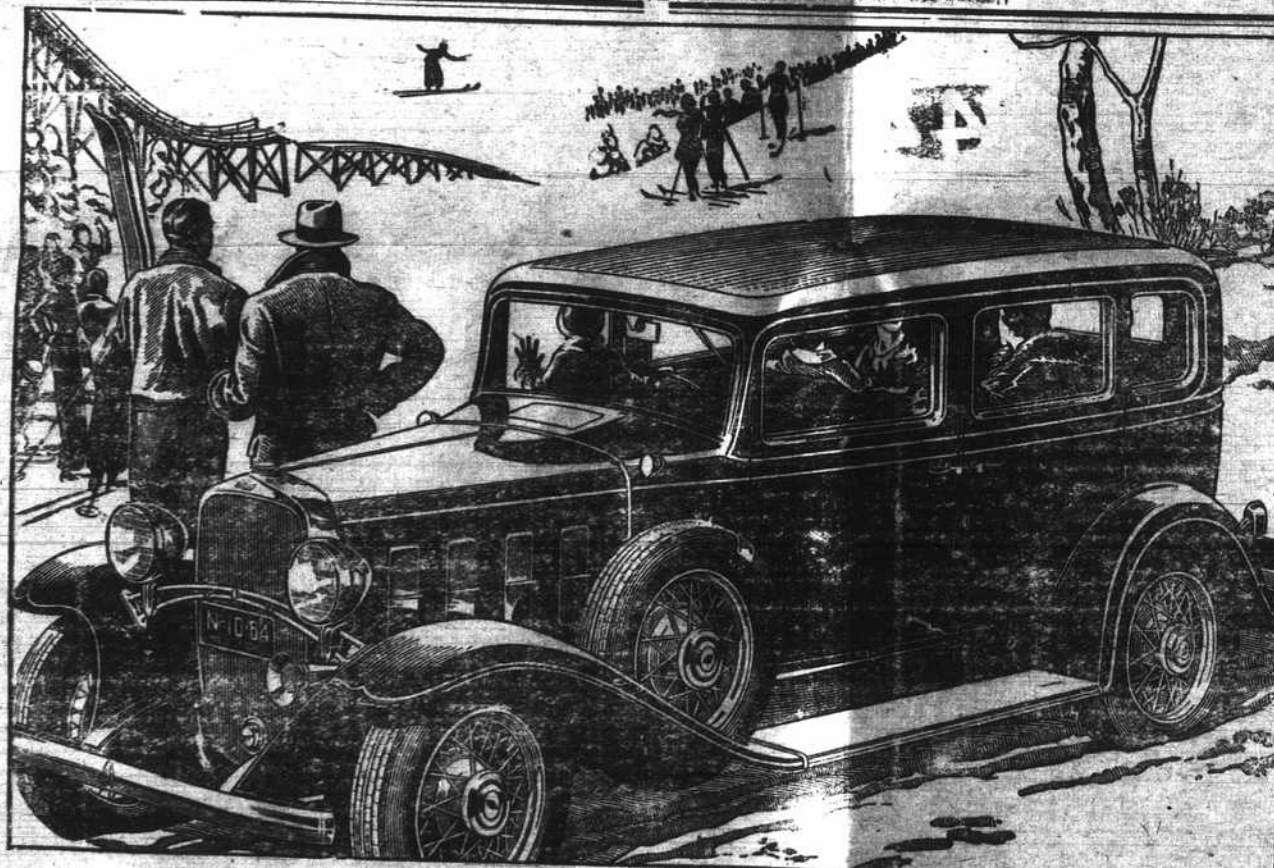


WE ARE headed for the open... Open spaces where fresh air and sunshine put roses in our cheeks. Open diplomacy that substitutes frankness for secret scheming and negotiation. Open opportunities, open doors in business... And modern business in general conduct in an honest and open manner.

No force has been as powerful as advertising, in bringing American business into the open. A manufacturer who advertises, issues an open challenge to every competitor to produce better goods if he can. He invites the public to compare his article with all others. He makes definite claims for his product over his own signature. And he knows the vital importance of keeping his promises.

Advertising tells you where you can get the greatest value for your money. When you buy an advertised article, you know it is dependable. An unknown product means nothing. Advertising prohibits the worthless, and promotes the good.

The advertisements in THE EXPRESS are the record of business progress, the report to you of the manufacturers and merchants who serve you. It will pay you to read them



The Special Sedan, \$475

## Fisher Bodies are exclusive to Chevrolet in the lowest price field

All that is new, smart and desirable in fine modern coachwork is represented by the phrase *Body by Fisher*. And today, the only car of lowest price to offer Fisher coachwork is the new six-cylinder Chevrolet.

Examine this car carefully and you'll discover one evidence after another of Fisher's master craftsmanship—the same long, clean, ultra-modern streamlines you've admired so much on custom cars; gracefully sloping front pillars, with cowl and windshield frame constructed in one smooth piece. Step inside and you'll get many pleasant surprises, for Chevrolet interiors are complete with modern comfort-features and conveniences: a finger-touch adjustable driver's seat; an interior sun visor; broad "lounging-type" seats; and a wide expanse of vision for all occupants. Notice how easily

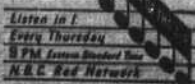
Chevrolet doors are opened by the new automatic door ejector. See how obviously solid and substantial is the Fisher composite wood-and-steel construction, how massive and well-fitted are Chevrolet doors. Slam them hard, and instead of a metallic noise, you get the welcome solid sound which tells you, "This is the finest of coachwork."

The truth is—Chevrolet and Fisher have achieved in these bodies the best-looking, best-built, most completely equipped line ever to appear in the lowest price field.

PRICED AS LOW AS \$475 f. o. b. Flint, Michigan. Special equipment extra. Low delivered prices and easy G.M.A.C. terms. Chevrolet Motor Company, Detroit, Michigan. Division of General Motors.

## NEW CHEVROLET SIX THE GREAT AMERICAN VALUE FOR 1932

SEE YOUR DEALER BELOW  
**Leggett Motor Company,**



# ..The.. Sanford EXPRESS