

PUBLISHED EVERY AFTERNOON... Union Alley, between Main and the Old Street.

Entered as second-class matter August 9, 1892, at the postoffice at Washington, D. C., under the act of March 3, 1879.

Subscription prices: One Month \$1.00, Three Months \$2.50, Six Months \$4.50, One Year \$8.00.

Subscribers desiring the paper discontinued will please notify this office on date of expiration, otherwise it will be continued at regular subscription rates until notice to the contrary is received.

If you do not get the Daily News promptly telephone or write the manager, and the complaint will receive immediate attention. It is but desire to please you.

All articles sent to the Daily News for publication must be signed by the writer, otherwise they will not be published.

TUESDAY, FEBRUARY 9, 1915.

UNAPPRECIATED FEATURES OF THE SCHOOL LUNCH MOVEMENT

School lunches have become established in a large number of our cities, and a defense for their institution is now necessary. The maintenance of such a service is to be defended solely on the basis of the needs of the poorer classes, but encouraged in ways to avert the impression that the school lunch leads to a neglect of parental responsibility in the matter of the child's nutrition. The school lunch is a most commendable innovation in the school day. As a rule, the school lunch room provides a more healthful environment than the street vendor. The food is chosen by persons trained in the field of nutrition, and the variety of diet is so arranged that one cent a portion is made quite impressive. Salads, sandwiches, soups, and other dishes are served. The Washington School Lunch Commission, in co-operation with the Bureau of Welfare of School Children of the Association for Improving the Condition of the Poor, for example has maintained a service available to over 24,000 children in seventeen public schools situated in districts in which the need of such service is pressing. The registration has run as high as 2,353. In addition to this noon warm lunch service, the committee has operated a special 3-cent warm lunch of milk and crackers at 10 a. m., for anemic, ungraded and crippled children. It begins to appear that the school lunch movement has engendered certain features which promise to contribute to the general welfare in a direction almost as important as that of the proper nourishment of the body. Educational and social possibilities at first unforeseen, are being brought to notice. The children of the well-to-do parents and the children of the poor have learned "to sit quietly as one family, to talk pleasantly with each other to eat their food properly, and many acts of courtesy and generosity have been encouraged." The appeal which the school lunches have made has no infrequently been manifested by mothers who have had their interest in respect to special foods and dietary procedures aroused. Thus the school lunch scheme has fostered educational and social as well as economic purposes.

A Threat.

A cavalry regiment was starting for the front. Just before the column reached the railway station where they were to embark, a sudden cheering of the crowd in the street caused the regiment to halt. A woman, who was riding by on a bicycle, was the cause of the commotion. She reared and fell, and her rider was over her head and patting her cheek. "Don't worry, Lucy," he said, "I'll save you."

Bill of Black Death. Black death became epidemic in Asia and Europe in 1425. In a few years the black death had carried off 100,000,000 human beings in Europe and Asia.

Piscatorial Note. The tale is usually the biggest part of the fish.—Philadelphia Public Ledger.

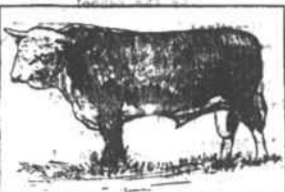
A PERSONAL STATEMENT. There are so-called "honey and tar" preparations that cost the dealer half as much but sell at the same price as the original and genuine Foley's Honey and Tar Compound. We never offer these imitations and substitutes. We know you will buy Foley's whenever you need a cough syrup if you once use it. People come long distances for the true FOLEY'S—over thirty years the genuine remedy for coughs, colds, croup, whooping-cough, bronchial and laryngeal coughs. For sale at Davenport's Pharmacy.

FARM STOCK

HEREFORD BREED OF CATTLE

Represents Type Suitable for Largest Production of Beef—Has No Superior in Range.

The Hereford derives its name from its native district in England. The most popular color and markings are dark chest or sherry, white face, throat, chest, legs, belly and small stripe of white on neck and before the shoulders. The horns are medium in length, white and generally turning outward.



Hereford Bull.

This breed represents the type that is suitable for the largest production of beef as it is low set and broad, heavy in forequarters; full, deep chest, level wide back, wide thick ribs and quarters. The form represents that which is associated with a strong constitution, vigor and prepotency, and one of the strong points of the breed is its grazing attributes. The Hereford probably has no superior on the range. The cows of this breed give only milk enough to raise a very thrifty calf.

DON'T KEEP TOO MANY HOGS

Overstocked Farm Is Unprofitable One—Give Every Pig or Other Animal a Fair Chance.

It is a mistake to overstock your place with pigs or any other animals. Too many farmers in attempting to make money by increasing the number of animals do so at the expense of quality. An overstocked farm is not a profitable one. A farm that is overstocked is one that has more animals of any character than can be properly cared for or kept in good, thrifty, growing condition. Wherever the numbers interfere with the growth or with the attention that should be given them it is overstocked. If the pastures are too small for them or too short, necessitating the purchase of feed, the profits are cut with a two-edged sword, first because of purchasing feed, second because of injury to the thrift and growth of the animals. More money can be made with half the animals properly fed and cared for and kept in a thrifty, growing condition. Every pig or other animal should have a chance, and if they are crowded it is impossible to give them a good show. Numbers sometimes give the sole cause of losses instead of profits.

Better To Take Than Dangerous Calomel

Dodson's Liver Tonic is a wholesome, reliable medicine that is guaranteed to take the place of calomel. Dodson's Liver Tonic strengthens the liver—it does not drive it to its work by over stimulating it as calomel does.

Dodson's Liver Tonic does not have any of the dangerous after-effects of calomel. It doesn't "knock you all out" for a day or two the way calomel often does. It is a vegetable liquid—absolutely safe for either children or grown people. Everybody likes its taste, and it makes you feel good and lively.

No restriction of habit or diet necessary. Get a large bottle at Lee Davenport's drug store for only fifty cents and try it. If it doesn't satisfy you, if it doesn't take the place of calomel to your satisfaction, you can get your money back by simply asking for it.

NOTICE

This is to notify the general public that S. J. McWhorter, Jr., who was formerly general manager of the Washington-Beaufort Land Company, is no longer connected with the said company.

Mr. John E. Corey is now manager of the company, and can be found at the Company's office on Market street, this city, at the old rental stand of H. E. Harding & Son.

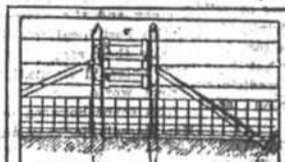
WASHINGTON-BEAUFORT LAND COMPANY.

FARM ANIMALS

GATE BUILT THROUGH FENCE

Much inconvenience and repairing can be saved by adopting Method Shown in Illustration.

At the point where one is in the habit of crawling through the hog fence the wires become sagged and the woven fence is twisted out of shape, to say nothing of the inconvenience attending this unhandy method of getting through the fence. Set an extra post in line with the fence at such a point, stapling the wires securely to it. Brace the small



Gate Through Top of Hog Fence.

post and the one next to it as shown in illustration; cut the wires between them; make a small gate to fit this opening in the fence, and hang it, using either iron hinges or strips of leather, to support it and allow a free swinging. Attach a hook latch, as indicated, and you will save yourself much inconvenience and repairing of fences.

FOR FATTENING THE LAMBS

Experiments With Shelled Corn and Alfalfa Hay Furnish Valuable Comparison for Breeder.

W. C. Coffey, chief in sheep husbandry at the University of Illinois, has completed his experiments on the proportion of shelled corn and alfalfa hay for fattening Western lambs. The experiment also furnishes a valuable comparison of the feeding and market qualities of wether and ewe lambs and shows the effects of early and late shearing on the feeding operations as a whole.

Western lambs which had been purchased on the Chicago market about a year ago were used in the experiment. These were divided into two main groups. Group one was fed the largest quantity of corn that it was possible to get the lambs to consume, with just enough hay to keep them healthy and thriving. Group two was fed a large amount of hay, with just enough corn to put them in choice market condition.

In experiment or group one, four lots of wether lambs were fed as nearly as possible like two of the lots of wether lambs. In experiment No. 2 three lots of lambs were shared early and three were sheared late.

In each experiment the lambs receiving the largest proportion of corn made the largest gains. The difference between wether and ewe lambs in feeding and market qualities were slight. Shorn lambs ate more feed than unshorn lambs in warm weather, but there was little difference between them in gains and no difference in market quality. Lambs left in the fleeces until the end of the experiment sheared from 2 to 2.75 pounds per head more than early-shorn lambs, and on this account returned more profit.

SULPHUR DRIES UP ECZEMA AND STOPS ITCHING

This old time skin healer is used just like any cold cream.

Sulphur, says a renowned dermatologist, just common household sulphur made into a thick cream will soothe and heal the skin when irritated and broken out with eczema or any form of eruption. The moment it is applied all itching ceases and after two or three applications the eczema disappears, leaving the skin clear and smooth.

He tells eczema sufferers to get from any good pharmacy an ounce of household sulphur and apply it to the irritated parts the same as you would any cold cream.

For many years common household sulphur has occupied a secure position in the practice of dermatology and cutaneous affections by reason of its parasitic-destrucing property. It is not only parasiticidal, but also antipruritic, antiseptic and remarkably healing in all irritable and inflammatory conditions of the skin. While not always effecting a permanent cure, it never fails to instantly soothe the angry itching and irritations and fast the itching right up and it is often years later before any eruption again appears on the skin.

BOY HERO SAVES PLAYMATE

George Hughes, Ten Years Old, Rescues Companion From Wheels of Railroad Locomotive.

Washington, Pa.—Ten-year-old George Hughes proved himself a hero when his playmate, Paul Enoch, of the same age, became entangled in the wheel of a moving railroad locomotive on the Wayneburg and Washington railroad here.

The two boys were standing by the track when Paul Enoch slipped and his leg became entangled in the wheels of the engine. Before it could be stopped or anyone could reach him the lad had been whirled around twice by the wheel's revolution. Then George reached him and, grabbing his companion by the leg, pulled him free and saved his life.

The boy was unconscious when rescued, but physicians, who were immediately called, said that his only serious injury was a deep gash in the right leg. George Hughes was proclaimed a hero by the persons who witnessed the rescue. He could not, however, understand that he had done anything remarkable and insisted that he merely grabbed his playmate and pulled him out of the wheel.

WOUNDED WANT LOVE TALES

German Hospital Inmates Are Tired of Reading Literature About War.

Amsterdam—"What kind of books shall we send to the hospitals?" was the question dispatched by a Berlin charitable organization to the head of one of the German field hospital divisions.

The answer came back promptly: "Whatever you send, don't send war literature. The wounded like best of all a good love story. The young men, especially, are rather tired of hearing about the war."

EARL ESCAPES GERMAN

London—Disguised as a Belgian refugee, the earl of Leven and Melville, "outed in the thigh, escaped from a German hospital through the German sea, crossed Holland without a passport and reached London.

GREEDY HOGS ARE DESIRABLE

Oregon Station Finds by Actual Feeding Tests That Heaviest Eater Is Most Profitable.

The Oregon agricultural station has found out by actual feeding tests that the hog which eats most greedily is the most profitable. Thirty pigs were divided into three lots, the heaviest eaters in one lot, and others graded according to their capacity for consuming feed.

A hundred hogs like the heaviest eaters at the rate of gain made and present prices, would make a profit of \$257.65, or almost exactly \$3 a head. A hundred like the poorest feeders would have made a profit of \$115.65, or only a little more than a dollar a head. They were evenly graded as to size and sex. If there is this great difference between the heavy-eating hogs and the light eaters—then most hog growers will agree that the breeders might well devote themselves to breeding appetite in hogs, instead of color or fancy points, if the appetite makes the profits, breed appetite.

LIVE STOCK NOTES

Never let the odd nurse if the mare is heated.

Early and thorough training makes gentle, safe and tractable horses.

Keep young stock growing and it will be earning something every day.

No profitable animals should be kept a moment longer than necessity requires.

The profitable mutton breeds of sheep are those of early maturity, rapid growth and necessarily short-lived.

It takes longer and costs more to make up a pound of loss than it does to add five pounds of gain to favorable conditions.

Notice is hereby given that the firm composed of J. E. Macklin and H. H. Battersworth has been dissolved and that the business thereof has been sold to Raymond Woolard who is entitled to collect all accounts due the said firm and has assumed all debts payable by them.

The said Raymond Woolard will continue the business at the store on the east side of McNair street heretofore occupied by said firm. This Jan. 14, 1915. H. H. BATTERSWORTH, RAYMOND WOOLARD.

JUDGE HAS NARROW ESCAPE

Dumb-Bell Exercise Routine Rescues That He Is Communicating With Enemy.

London—An English judge had a narrow escape from arrest on the ground of signaling to the enemy. He was taking a short holiday on the East coast, and, as is customary with him, was indulging in a little dumb-bell exercise before retiring to rest. The movements of his arms behind the red blind of his bedroom attracted the attention of the sentries on the cliffs. They thought someone was signaling and hastened to the hotel to capture the culprit. For some time they refused to believe the judge's explanations, and it was only on being shown the visitors' book that they withdrew.

COW'S SKELETON SAVED HIM

Arkansas Youth Had Been Convicted in Court of Stealing Animal.

Little Rock, Ark.—The finding of the skeleton of a cow in the woods of Howard county saved William Kennedy, twenty-four, from entering the penitentiary. Kennedy had been convicted of stealing the cow, and sentenced to one year.

He was allowed to come to Little Rock alone, and was about to go to the penitentiary to surrender, when a delegation of friends brought him the good news.

PERL BLUE—OR JUST STUPID?

Sluggish bowels and torpid liver usually go together and it does not take long for constipation to produce a bad condition—a feeling of languor or listlessness—the "blue" headaches, palpitation or other malady. Indeed, when in this condition the system invites more serious illness and is not able to throw off disease. Foley Cathartic Tablets are a wholesome laxative and cleanser of the bowels. They act without inconvenience, griping or sickening. For sale at Davenport's Pharmacy.

NOTICE OF SALE OF LAND

Under and by virtue of an order of the Superior Court of Beaufort county made in the special proceeding entitled "W. L. Vaughan, Administrator of John Cox, deceased, vs. Charles Cox, a minor, and others, heirs-at-law of John Cox, deceased," the same being No. upon the special proceeding docket of said county, the undersigned commissioner will, on Thursday, the 11 day of February, 1915, at twelve o'clock, M., at the Court house door in Washington, N. C., offer for sale to the highest bidder for cash the following tract of land lying and being in Chowchilly township, Beaufort county, however, subject to the dower right of the widow of the said John Cox, deceased, (Emma Cox Whitfield), the said land being described as follows: Adjoining the lands of R. T. Buck, Crave McGowan, Herbert Dixon, and others and consisting of 2 tracts as follows: 1st. Tract: Conveyed by deed from Chas. B. Powell to Jno. Cox, May 2, 1898, Book 96, page 489. Records of Beaufort county, bounded by the Washington and New Bern road and being on the east side of said road, and being a part of the tract of land bought by R. T. Buck from H. H. Carrow and wife by deed dated Feb. 15, 1888, and more particularly described as follows: Beginning near the Ash Buck place at her line at the road leading from Washington to New Bern, and running with the said road northwardly to a small branch near the public school house, then with the ran of said branch to the old line of said Carrow tract, around the Ash Buck land, and with her line to the beginning. Containing 20 acres more or less. 2nd. Tract: Deeded by R. T. Buck and wife Mary E. to John Cox, Nov. 21, 1891, Book 79, page 295, and described as follows: All that tract of land specified in a deed dated Feb. 15, 1888, Book 96, page 489, and more particularly described as follows: Beginning near the Ash Buck place at her line at the road leading from Washington to New Bern, and running with the said road northwardly to a small branch near the public school house, then with the ran of said branch to the old line of said Carrow tract, around the Ash Buck land, and with her line to the beginning. Containing 20 acres more or less.

QUITS HUSBAND FOR TRAMP

Woman Takes Cruel Contempt With Man Accused With Her on Serious Charge.

Portland, Ore.—After twelve months of the roughest in burrows and squalor, a woman contended as a tramp with Fred Halstead, Mrs. W. H. Slade, aged thirty-one, walked from Oakland to Portland, with Halstead and was arrested with him by Detective Hyde and Vaughn, who charge Halstead with violating the Mann "white slave" act.

According to information received by Detective Captain Daly, Mrs. Slade, Van Slade, attorney of Oakland, Cal., Halstead caused the woman to desert her husband and three children at Oakland.

When they first met, more than a year ago, Halstead and the woman worked their way to New York and made the return trip in a similar manner.

Mrs. Slade is suffering from a dislocation of one of her hips, the result of a beating administered by Halstead when he found out she had written to her husband.

Evidence intended to show that Halstead is guilty of violating the federal law was taken by the detectives and turned over to the federal authorities.

AN EGYPTIAN SOLDIER



Type of the native Egyptian soldier in the British infantry service.

"Got the Goat" of Goat.

London—A British soldier writing home from the firing line told how he forced marching "got the goat" of a goat. The animal fell to with his column and marched about half a day, finally dropping from exhaustion.

Worse Than Dumdum.

A British surgeon says the Germans have a bullet that after entering the flesh turns and passes through backward, inflicting a worse wound than a dumdum.

Know the Piano

and the man you buy it from.

It does not matter how much you pay for a piano, if it is not a good piano, it is a waste of money and future happiness.

You know our reputation for integrity and fair dealing. We are here to stay and make good. Your interests and ours are identical; consequently, you can rely upon our representations.

Make the home store as attractive as possible; give it the CHARM OF MUSIC, that restful, elevating charm which creates purity of thought and induces higher ideals.

Chas. M. Stieff & Leon S. Stead, Mgrs. 303 County St. WASHINGTON, VA.

Profe Business Card

H. W. CARTER, M. D. Practice Limited to Diseases of the LUNGS, NERVOUS SYSTEM AND THE THROAT AND NOSE. SPECIALTY OF GLASSES. Office at 1100 North Washington Street. Hours 10 to 12 a. m., 2 to 5 p. m. except Sundays. WASHINGTON, D. C.

Washington Bldg. Phone 24. P. O. Box 225. M. N. BERRY Wholesale Distributor Flour, Meal, Hay And Grain Feed Washington N. C.

DR. HERBERT W. BURN, OSTEOPATHIC PHYSICIAN. CATARRHAL DRAINAGE. Chronic and Nervous Diseases a Specialty. Daniel-Warren Building Tuesday and Friday. Hours—11:30 to 12:30. 3 to 5. Phone 225.

H. S. Ward, Junius D. (Crim.) WARD & GRIMS. Attorneys-at-Law. Washington, D. C. We practice in the Court of the First Judicial District and the Federal courts.

W. C. RODMAN Attorney-at-Law. Washington, N. C.

HARRY MONTGOMERY, ATTORNEY-AT-LAW. After January 1st, 1915. Laughlinhouse Building. Corner Second and Market Sts.

E. A. Daniel, Jr., J. R. Manning, L. C. Warren, W. W. Kirtland, DANIEL, WARREN & KIRTLAND. Attorneys-at-Law. Practice in the Superior, Federal and Supreme Courts of this State.

A. D. MacLean, Washington, D. C. W. A. Thompson, Annona, N. C. McLEAN & THOMPSON Attorneys-at-Law, Annona and Washington, N. C.

EDWARD L. STEWART Attorney-at-Law. Washington, N. C.

Norwood L. Simmons, W. L. Vaughan SIMMONS & VAUGHAN Attorneys-at-Law. Washington, N. C.

Jno. H. Small, A. D. McLean, Stephen C. Bragaw, W. B. Rodman, Jr., SMALL, BRAGAW & RODMAN Attorneys-at-Law. Office over J. P. Taylor's Store, Washington, North Carolina.

G. A. PHILLIPS & BRO. FIRE INSURANCE WASHINGTON, N. C.

GEO. J. STEUBERT Attorney-at-Law. Market Street. Washington, N. C.

JOHN H. BODNER Attorney-at-Law. Washington, N. C.

Use "Bank of America" movement and get good as far as to invest in a business that a friend who was anxious to know how he had made out. "Was that one of those portable hand-pumps you bought?" asked the friend. "I guess it was," replied the other, rather ruefully. "The wind carried it away one day."

GET THIS OUT NOW. If you don't want it today, you may next week. Send this advertisement and \$1 to Foley & Co., Chicago, Ill., writing your name and address clear. You receive in return three trial packages—Foley's Honey and Tar Compound for coughs, colds, croup, and grippe; Foley Kidney Pills for weak or staided bladders or bladder troubles; and Foley's Cathartic Tablets, a pleasant, safe, and effective purgative, just the thing for water's stage. You receive also a trial liver. These will insure a standard remedy for sale at Davenport's Pharmacy.