

Warden Reports On Work Of Year

County Fire Warden Dawson Jones Makes Detailed Report To Members Of Board Of County Commissioners Relative To Fire Prevention

Following is the report of County Fire Warden Dawson Jones to members of the Board of County Commissioners relative to work done in preventing forest fires during the past eleven months:

To the board of county commissioners of Brunswick County:

"As County Forest Warden I wish to submit the following report covering my activities for the first eleven months in this fiscal year as these activities relate to your county's co-operation in forest fire control under your co-operative agreement with the forest service of the state department of conservation and development. During these eleven months the following has been accomplished:—

"1. 18 district wardens are now under appointment.

"2. 902 sawmill operators, farmers and other residents of the county were interviewed by me regarding forest fire control.

"3. In the construction of my work I traveled 17,536 miles by automobile.

"4. There are now under signed agreement 18 special fire fighting crews.

"5. These 18 crews are made up of four men each.

"6. During the period of this report 1 steel lookout tower was constructed in the county without cost to the county. Same being purchased from Emergency Conservation funds and erected with CCC labor, without cost to the county.

"7. There is now a total of 3 lookout towers in the county, 2 having been previously built.

"8. 4 1/2 miles of telephone line were constructed this fiscal year for reporting fires from towers to the wardens. The cost of this construction was also borne by the Federal Government and since there had not been any telephone lines previously constructed, there is to date a total of 4 1/2 miles in the county.

"9. There are no combination living quarters and garages in the county constructed by ECV but there are plans for the construction of two.

"10. The CCC camp has constructed 6 miles of roads within the county without cost to us, along with ten completed miles of fire line constructed by them and also a few miles of fire line that is partially completed.

"11. We have brushed, stumped, logged and snagged 38 miles of fire line, same being on one side of road and other places being on both side of road, these lines being approximately 50 ft. wide, all of this work having been done by FERA under the supervision of the county warden.

"12. 39,000 acres of private forest lands have been listed with the state by landowners and placed under intensive protection, thus relieving the county of a large portion of the cost of the protection of these lands and allowing us to use our funds elsewhere. These landowners pay an assessment rate of 2c per acre which is matched by an equal amount of State and Federal funds.

"13. We now have in the county 86 especially constructed portable knapsack fire pumps used in spraying water on woods fires. These pumps were purchased from joint county and state funds. There are 32 rakes, 32 swatters, 2 B Fire Torches, and 4 trailers.

"14. 99 woods fires occurred in the county this fiscal year, burning a total area of 15,574 acres. The average area burned per fire was 157.31 and the average cost per fire was \$5.82.

"15. 9 parties responsible for violating the State fire laws were prosecuted and 7 were convicted, 2 being acquitted. Two of these were given 30 days on the road and total amount of fines was \$64.00.

"There was \$38.15 cost collected from responsible parties for 7 fires.

Respectfully,
DAWSON JONES,
County Warden,
Brunswick County."

CHURCH NOTICE

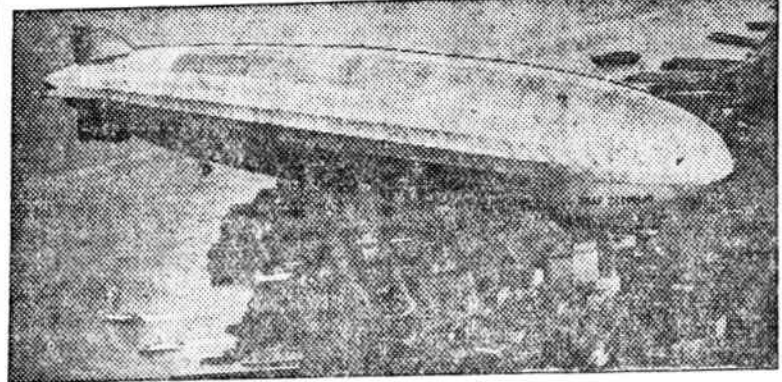
Southport Baptist Church, T. H. Biles, pastor.
Sunday, June 16, 1935.
Sunday school at 10 o'clock.
R. E. Sentelle, superintendent.
Baptist Training Union meeting at 7 o'clock.
Evening worship at 8 o'clock with sermon by the pastor. There will be a baptismal service at this hour. This service was originally scheduled for last week but conditions made it necessary that it be postponed for one week.

Rosendahl Defends Use of Dirigibles; Drive Launched for Construction

America's Foremost Air-ship Expert Cites Record of Graf Zeppelin in Commercial Service in Defense of Lighter-Than-Air Craft

"SINCE the War, submarine accidents have caused two and a half times as great a loss of life as air-ships; marine disasters forty times, railroads 300 times, automobiles, 1,000 times; yet we hear no talk of discontinuing construction of submarines, steamships, railroads, or automobiles," cried Lt. Comdr. Charles E. Rosendahl, U.S.N., before the Society of Automotive Engineers, meeting in New York.

Slender, youthful, assured, a striking figure in naval uniform, the man who is considered one of America's foremost experts on the construction and navigation of air-ships made a brilliant defense of dirigibles both for peace and war, reports *The Literary Digest*. His



International The Graf Zeppelin soars over New York City on her first crossing of the North Atlantic in 1928.

address is expected to launch a new campaign in this country for continued construction of large rigid air-ships for naval defense and commercial development.

It was the first public offering of "lighter-than-air" advocates since the loss of the *Macon* at sea off the California Coast, on February 14, roused a storm of opposition to further air-ship construction.

No Real Opposition

In the audience were engineers and scientists of international reputation, several of whom, it was reported, had come for the purpose of "blowing up" the air-ship idea. If this was the case, they must have become converted before the hour of questioning arrived, for no very real opposition appeared.

Will Rogers And Al Jolson In Two Features At The Carolina

"Doubting Thomas," Said To Be Rogers' Best Picture; Offers America's Favorite Comedian In Attractive Role; Ruby Keeler Plays With Al Jolson; Two Are Featured In "Go Into Your Dance" At The Carolina Theatre Monday

Will Rogers' latest comedy, "Doubting Thomas," coming to the Carolina Theatre Wilmington.

The picture was adapted from George Kelly's stage hit, "The Torch Bearers," and shows Rogers in the role of a simple, home-loving sausage manufacturer, whose life-world is tossed into a turmoil when his wife, Billie Burke, goes theatrical; as does his son's fiancée, Frances Grant. The two appear in an amateur charity show and if the audiences hold on to their seats during this show, they'll be doing more than this reviewer was able to

do. How Rogers effects a cure for them is one of the highlights of the picture and shouldn't be missed.

Jolson shows more of his old time verve, both in his singing and his acting, than he has displayed in any other picture. His

America Leads in Inventive Genius

Granting 2,009,957th Patent Top-Other Countries

IN the huge building, sprawling over two blocks, which houses the United States Patent Office in Washington, a curious little ceremony took place. To Joseph V. Ledwinka, veteran Chief Engineer of the Edward G. Budd Manufacturing Company, of Philadelphia, Commissioner of Patents Conway P. Coe handed a document, simultaneously pronouncing these sonorous words, *The Literary Digest* reports:

"Mr. Ledwinka, this patent, numbered 2,000,000 in the current series, has importance as a testimony that some two millions of American inventors, including yourself, have, through the years and decades, given their country industrial preeminence among the nations."

Actually, it was the 2,009,957th patent issued in the United States, for before the present series began, on July 28, 1836, 9,957 patents had been issued, the first, in 1790, to Samuel Hopkins, for a method of making "pot and pearl ashes," the name then given to lye.

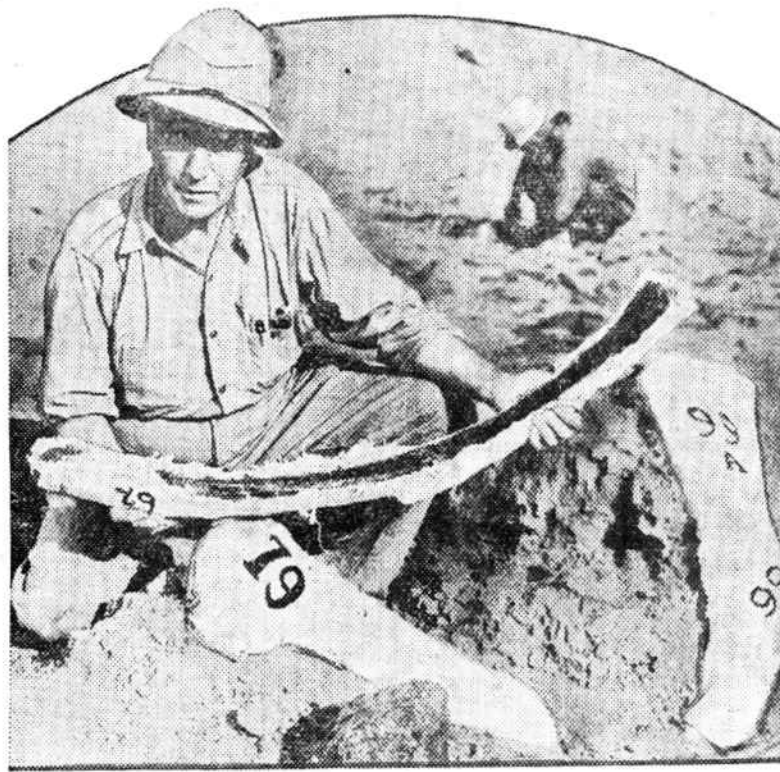
The first patent bore the signature of George Washington.

Patenting Abroad

A year ago, when approximately 1,900,000 patents had been issued by the Government, the Patent Office made a survey of the patents of other countries, and found the French to be the next most inventive people, with 871,532 patents up to January 1, 1934.

Great Britain had 797,153; Germany, 583,728; Italy, 273,598. Canada rated high in inventiveness, in proportion to population, with a total of 325,800 patents. Japan had issued 83,361 patents, and the U.S.S.R., 63,992.

Ribs of a Prehistoric Monster



Some 125,000,000 years ago what is now the state of Wyoming was a gigantic tropical swamp, and the bones shown here were the ribs of a huge monster that waded around in the marsh grasses. Bit by bit the area dried. The last of the monsters huddled in a lake. The lake was dried, too, and proved to be their grave, now the hunting ground of paleontologists. Dr. Barnum Brown, examining his "find," is the head of the American-Sinclair expedition.

Billie Burke is splendid as the stagestruck wife who thinks she's been suppressing a desire all these many years. Alison Skipworth very capably and expertly repeats the part of Mrs. Pampinelli, which she played on the stage; while Sterling Holloway, as the bungling sound-effects man for the play, is a scream.

First National gives the public not only a musical comedy, but a picture that is replete with dramatic situations as well as hilarious laughs, romance and gigantic, spectacular dance numbers.

The cast is headed by a most remarkable team, Al Jolson, stage and screen star who introduced the talking picture, and his wife, Ruby Keeler, one time musical comedy star who rose to fame on the screen in the last two years.

Never before have the two played together, each fearing to take the spotlight from the other. But in this picture they work together as a perfect romantic team.

Jolson shows more of his old time verve, both in his singing and his acting, than he has displayed in any other picture. His

work with Miss Keeler seems to have given him an unusual stimulus. As a Broadway entertainer, in

the picture, he is barred from the New York stage because of his fondness for the "ponies" and also wine and women. After sharing honors with a little dancing girl in a mid-West town he stages a comeback that sets the theatrical world aflame.

Miss Keeler is as sweet and winsome as ever as the dancing partner, who is unable to hide her love for the great entertainer although he continually annoys her, having fallen for the wife of a blues singer, the wife of the king of the underworld.

An American boy will quit the farm to keep from getting up at 5 a. m. After he goes in business in the city he gets up at 4 a. m. to play golf.

INSECTICIDES

Are you bothered with ants, flies or other pests? Tell us your troubles and let us help you.

We carry a full line of insecticides, including arsenate of lead.

Watson's Pharmacy
Southport, N. C.

FURNITURE for SUMMER

Porch Rockers \$1.50 to \$6.95
Mattresses \$5.95 up
Bed Springs \$2.95 up



IRON BEDS \$4.95 up
5 BURNER OIL RANGE \$29.95

For cooler and quicker cooking during the Summer months. Economical to operate. Ask to see this Fine Stove.

Geo. W. Kirby & Son
Supply, N. C.

NOTICE! NOTICE!!

The Brunswick County Board of Equalization and Review will meet in the Court House on the following days for the purpose of reviewing the tax lists for the year 1935:—

North West and Town Creek Townships,
Monday, June 17th, 9:00 a. m. to 5:00 p. m.

Smithville and Lockwoods Folly Townships,
Tuesday, June 18th, 9:00 a. m. to 5:00 p. m.

Shalotte and Waccamaw Townships,
Wednesday, June 19th, 9:00 a. m. to 5:00 p. m.

The Board shall, on request, hear any and all taxpayers who own or control property assessed for taxation in the county in respect to the valuation of such property or the property of others—shall correct errors in the names of persons, in the description of property; but shall not increase or reduce the assessed valuation of any real property, except where errors have occurred, where property has been sub-divided, or where something of value of \$100 or more has been added or removed from same, or where some extraordinary circumstance has affected same.

W. R. HOLMES
TAX SUPERVISOR

Let's get in the Swim of Things With WONDER VALUES!

CATALINA and OCEAN SWIM SUITS \$2.98 up
MALIBU and GOLD TEE SWIN SUITS \$1.98 up
SHORTS—in Twills and Gabardines97c up
SLACKS—in Terry Cloth, Balbriggan, and Gabardines\$1.00 up
ROBES—in Crash, Terry Cloth, Seersucker Etc.\$1.00 up
PAJAMAS—in Seersucker, Broadcloth, Linen, at79c up

Wonder Dress Shop

33N. Front St. WILMINGTON, N. C.

ENAMELWARE



Included in our recent new shipment of merchandise was a large stock of high grade enamelware. Replace your old pots and pans with spic and span, up-to-date equipment.

J. B. Ruark Co., Inc.
SOUTHPORT, N. C.