

"Tarzan Escapes" And "A Woman Rebels" Coming To The Carolina

The best known character of modern fiction, cartoon and screen... the most popular adventure hero in all history... the idol of untold millions of kiddies of every race, color and creed... the delight of hosts of men and women... TARZAN... is again to unroll his thrilling jungle life picture.

This time it is "Tarzan Escapes" and again Johnny Weissmuller is Tarzan and again Maureen O'Sullivan is the heroine. The eagerly-awaited picture begins its engagement Thursday at the Carolina Theatre.

NEXT WEEK
Bringing together for the first time two of the green's top-flight stars—Katharine Hepburn and Herbert Marshall presents "A Woman Rebels," a moving drama of a young romantic idealist in search of freedom and independence against the restricting influences of the era into which she had been born opens Monday at the Carolina Theatre.

In contrast to the freedom enjoyed by the modern young woman, the story presents a romantic and tragic tale of an intelligent young girl who dares to demand that she choose her own husband, that she be permitted to emerge from home unchaperoned and that she go to work, a thing which no lady had heretofore done. Fog-enshrouded London, rural English estates and the Italian Riviera furnish the background for the resultant drama.

Ponds Must Be Of Good Depth

It is Capacity Of A Pond That Counts, And The Matter Of Depth Is Often Overlooked

Its capacity of a pond that counts, and depth is an important part of capacity that often has been overlooked.

During the 5 months, May-September, 200 head of cattle will drink nearly an acre-foot of water—325,850 gallons—at the rate of about 10 gallons of water for each animal daily. The Department of Agriculture has found that in the Great Plains in this same period four to five times as much water may be evaporated from a reservoir.

In constructing reservoirs or ponds for livestock, a depth of double a season's evaporation loss is a safe rule, says the Soil Conservation Service.

From April through September average evaporation from ponds in the Great Plains runs from 5 feet in Western Texas to a little less than three feet in the Dakotas and Montana, according to 15 to 30 years of records kept by the Division of Dry Land Agriculture. In the dry summer of 1934, evaporation losses reached nearly 6 feet in southwestern Kansas. Figures for the drought summer of 1936 have not been completed, but they will be much above the average.

Evaporation losses in 1934 showed these increases over the 15-year average: 20 inches at Hays, Kans.; 16 inches at North Platte, Nebr.; 15 inches at both Colby and Garden City, Kans.; 12 inches at Dickinson, N. Dak.; 14 inches at Lawton, Okla.; 13 inches at Dalhart, Tex.; 12 inches at Tucumcari, N. Mex., and lesser increases at other points in the drought areas.

Evaporation losses may be reduced by locating stock ponds and reservoirs, if possible, so they will be protected from hot, drying winds by steep slopes or trees. But the greatest saving of water is made with a pond of minimum area and maximum depth. Record of southwestern reservoirs show those more than 12 feet deep go dry less frequently than those shallower.

Carpenter: "You hammer nails like lightning."
Carpenter: "I mean you seldom strike twice in the same place."

TAKES APARTMENT
Mrs. W. G. King, of Hartsville, S. C., recently moved to Southport, where she occupies an apartment at the home of Sergeant Lienard. Her son, Lt. Carlisle King, is stationed at Camp Sapon.

LITTLE BITS OF BIG NEWS

(Continued from page 1)

had not as yet estimated total receipts for 1937-38, he believed the government could operate next year without raising taxes or adding new ones.

Wage Increase
A wage boost of 5 cents an hour and a Christmas disbursement of \$10,000,000 for employes was announced Monday by General Motors Corp. along with a "year-end" dividend of \$1.50 a share on the common stock. The pay increase, affecting more than 200,000 employes in the United States is effective immediately, the company announced. It will displace the "appreciation fund" under which the extra payment of \$10,000,000 will be made to workers this year.

To Revitalize
Republican Chairman John D. M. Hamilton said Monday he would begin work immediately to "revitalize" the republican party for the congressional election in 1938. He predicted that the party would emerge from its defeat in last Thursday's election with greater strength in the next few years than it has had since the defeat of Herbert Hoover in 1932. "I'm not going to sit around and wait until a few months before the next election to start to work," he told reporters.

Actor Dies
Charles "Chic" Sale, character actor and author whose fabulous "tall tales" and earthy impersonations made him one of the nation's foremost comedians died of labor pneumonia Saturday at the age of 51. The actor, who recently capped a discussion of his career on the stage and screen by commenting the older he grew the younger he acted, had been critically ill since Monday night and under an oxygen tent.

Good Business
Soaring Christmas shopping trade, spurred by increased employment, higher wages and father dividends from securities, may make the coming yuletide the best for retail stores since 1929, the National Retail Drygoods association reported Saturday. "Thousands of stores are reporting early interest from consumers in holiday merchandise," Channing E. Sweitzer, managing director, asserted. "Confidence in business conditions appear to be broadly evidenced, and with political distractions definitely out of the way, there is a genuine belief among merchants that consumer

spending will be unleashed in full force for a tidal wave of holiday buying. Sales during the period for the country as a whole are likely to show a 12 to 15 per cent increase over last year."

Invalidated
Federal Judge F. M. Meekins ruled Thursday compulsory federal grading and inspection of tobacco on North Carolina markets was unconstitutional and said he would issue probably Friday an order restraining continuance of the service at four of Oxford's warehouses. The government noted an appeal from the decision which affects the entire tobacco inspection act of 1935.

McCloskey Moves
New assignments for seven brigadier generals of the line were announced today by the war department, including: Brigadier General Manus McCloskey, transferred from command of the 13th Field Artillery Brigade at Fort Bragg, North Carolina, to command of the First Artillery Brigade at Fort Hoyle, Maryland, effective March 1. Brigadier General Thomas E. Merrill, assigned to succeed McCloskey to command of the 13th Artillery Brigade, effective upon completion of his present tour of duty in Hawaii.

SUGGESTIONS FOR IMPROVING SOIL
(Continued from page one)
as contributory to soil and water conservation. They are as follows:
First—Subsoiling. Break the land well and subsoil to a depth of 18 to 20 inches. This will increase the water-holding capacity of the soil.
Second—Terracing and strip cropping. Break down the slope with a system of terracing and strip cropping that will slow down the water and reduce erosion. The strip of close-growing crops will add enriching vegetable matter to the soil and make

it capable of holding more water.
Third—Liming. To improve the physical condition by neutralizing the acids and increasing the legume crop yields.
Fourth—Rotations. Plan a rotation that will include as much close-growing vegetation as possible.
Fifth—Retirement of lands. Take out of cultivation and put to pastures or trees all lands that cannot produce crops at a profit.

MAYOR PROCLAIMS PERIOD FOR RED CROSS CAMPAIGN
(Continued from page 1.)
remind citizens of our community how vital the Red Cross is in the life of our country. During the past year, both from actual observation and from the accounts of work done which were carried in daily newspapers, we have seen just how important it is that we have an active agency of the American people to administer assistance when the

need arises.
"The frequency with which this need does arise has been demonstrated during the past twelve months when we recall the floods, the tornadoes, the hurricanes, and the epidemics that have been suffered in various parts of this great country, and the work that the Red Cross has done to relieve distress and actual suffering as a result of these catastrophes. Other but less spectacular work carried on by the Red Cross has been just as important.
"The Red Cross comes to us now with another appeal for membership dues that will finance the work during the year ahead. Our Red Cross asks little from the community, yet contributes much to the general welfare of our people.
"For this reason, I sincerely urge those who are asked to participate in this great program by paying the relatively small membership to respond in a spirit of good neighborliness. I hope all will take part in the work by

becoming members* of the society.
"It gives me great pleasure, therefore, as mayor of Southport, to hereby set aside the designated period as the time when all past members will be asked to renew their membership and for those who have not enrolled before to add their names to the ranks of Red Cross members in our community.
"JOHN ERICKSEN, Mayor."

than 500 recruits will leave for Panama November 14. Others are being sent to fill vacancies in various Army organizations all through New York, New England and the Southeast, with better opportunity than ever before for rapid advancement and training. Since the southeastern states have been given quotas for other organizations outside the Fourth Corps Area, more than the usual

number of openings are available to southerners.
Detailed information is available upon application in person or by writing the recruiting officers located at: Charlotte, Asheville, Raleigh and Winston-Salem.

IF

You had to mess with a dirty, dusty, smoky coal stove today before you could get a fire going—

Stop It!

Let us put a circulating oil burning noiseless, effortless dependable

Duo-Therm

On The Job For You

PHONE 713

Or Come To

C. B. WESSELL

304 North Front

WILMINGTON, N. C.

Jimmie Craig, Salesman

Important Announcement

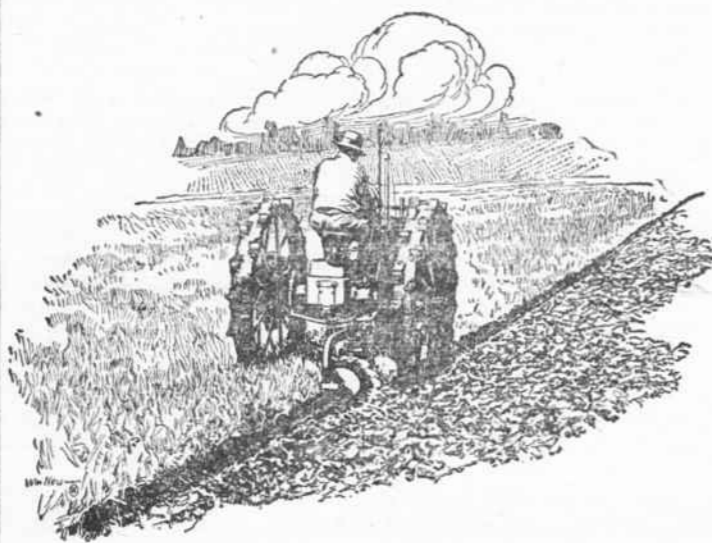
We have ordered complete equipment for WHEEL ALIGNING, WHEEL BALANCING, STEERING CORRECTION. We are having a man factory trained to do this work. We guarantee to correct any trouble you might have with your steering or wheel alignment.
We are also installing the latest, most up-to-date Radio testing and servicing equipment. We will be in a position to repair all makes and types of Radios at REASONABLE PRICES.
We have just received a clutch rebuilding machine, the only one in this section. If your clutch gives you trouble we can FIX IT.

Braxton Auto Service, Inc.
WHITEVILLE, N. C.

Drive With CONFIDENCE

The modern motorist pays little attention to the weather. As long as his automobile is in tip-top condition he goes and comes when he pleases. What a comfort to know that your automobile battery has the power it takes to assure quick starting. Replace your old battery WITH A WILLARD
Hood Service Station
SOUTHPORT, N. C.

Come in and See the FARMALL



THE fruits of more than 10 years of Farmall experience and Farmall improvement are concentrated in the new McCormick-Deering Farmall 12. Here is true Farmall power, reduced in size, weight, and capacity, to take over the power problems on tens of thousands of small farms, and to serve as a handy auxiliary tractor on larger farms. The Farmall 12 weighs only a little over a ton, yet it displaces four or more horses in field work. It handles all the operations in growing and harvesting all crops. It pulls a 16-inch plow bottom or two 10-inch bottoms.
We are glad we can offer our customers this efficient new Farmall 12 at a surprisingly low price. Take advantage of this opportunity to re-power your farm on a modern, low-cost-production basis. Investigate the Farmall 12 from every angle, check its usefulness and economy against horses or any other power.
Complete information will be supplied on request. Farmalls are now built in three sizes—a size for every farm.

We Have Just Unloaded A Car Of...
FARMALL TRACTORS AND POWER UNITS
Wilson Implement Co., Inc.
WHITEVILLE, N. C.

CAROLINA THEATRE

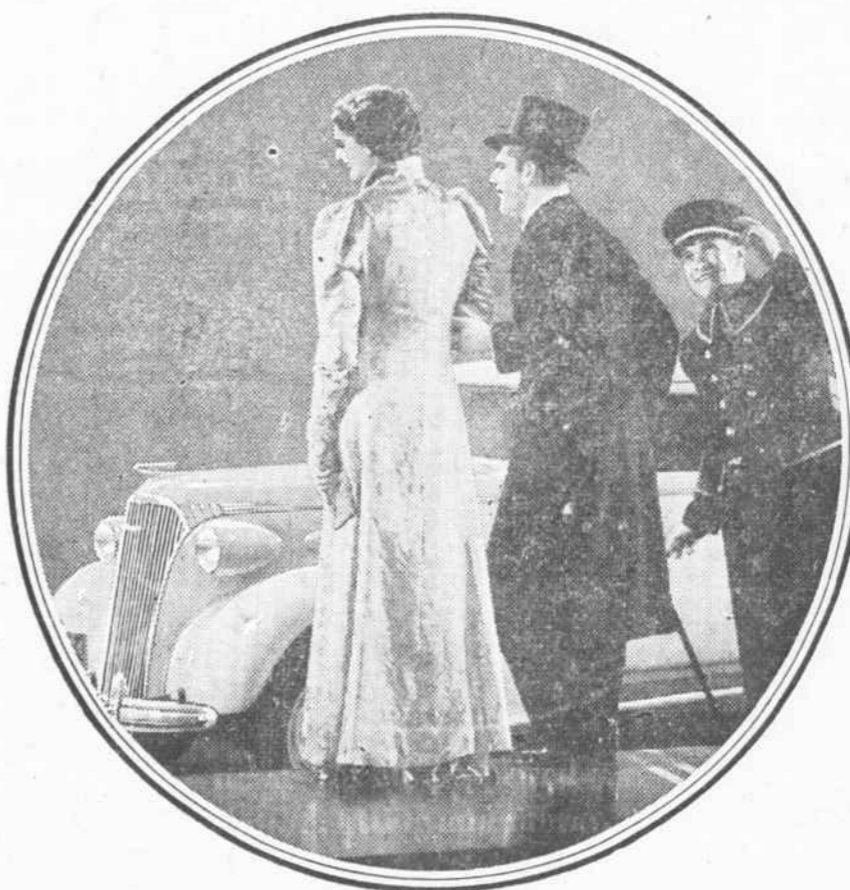
WILMINGTON, N. C.
Thurs., Fri., Sat., Nov. 12-13-14
THE ONE AND ONLY

Tarzan Escapes
JOHNNY WEISSMULLER with MAUREN O'SULLIVAN
Based upon the characters created by EDGAR RICE BURROUGHS
A Metro-Goldwyn-Mayer Picture
TWO YEARS TO MAKE! THE GREATEST OF ALL THE TARZAN PICTURES!
For his lovely mate, Tarzan faces a thousand strange new perils. Girls! You'd love the jungle life too if you had a handsome mate like Tarzan to shield you from danger in his strong arms!
MONDAY and TUESDAY, NOVEMBER 16-17
"A WOMAN REBELS"
With KATHARINE HEPBURN AND HERBERT MARSHALL

New CHEVROLET 1937

The Complete Car—Completely New

NOW ON DISPLAY



- NEW ALL-SILENT, ALL-STEEL BODIES**
(With UNSTEEL Turret Top Construction)
Wider, roomier, more luxurious, and the first all-steel bodies combining silence with safety.
- NEW DIAMOND CROWN SPEEDLINE STYLING**
Making this new 1937 Chevrolet the smartest and most distinctive of all low-priced cars.
- IMPROVED GLIDING KNEE-ACTION RIDE***
(at no extra cost)
Proved by more than two million Knee-Action users to be the world's safest, smoothest ride.
- NEW HIGH-COMPRESSION VALVE-IN-HEAD ENGINE**
Much more powerful, much more spirited, and the thrift king of its price class.

It's the newest of all low-priced cars... new in every feature, fitting and fabric... also the most thoroughly safe, the most thoroughly proved, the most thoroughly dependable.

CHEVROLET now offers the brilliant successor to the only complete low-priced car—Chevrolet for 1937, the complete car—completely new. You'll want to see it, for it reveals an even greater measure of superiority over its field than the fine car which in 1936 set a new all-time high in Chevrolet sales.

Chevrolet for 1937 is new all through... new in the unequalled beauty of its Diamond Crown Speedline Styling... new in the unmatched comfort and safety of its All-Silent, All-Steel Body... and most excitingly new in the greatly increased power and acceleration of its High-Compression Valve-in-Head Engine. Then, too, this thrilling motor car is proved all through. It embodies all the extra-value features which have made Chevrolet dependable and complete beyond any other car in its price range.

See and drive the complete car—completely new. Let your own good judgment tell you that it's the outstanding value of 1937!

CHEVROLET MOTOR COMPANY, DETROIT, MICHIGAN
ALL THESE FEATURES AT CHEVROLET'S LOW PRICES
*Knee-Action and Shockproof Steering on Master De Luxe models only. General Motors Installment Plan—monthly payments to suit your purse.



Elmore Motor Company Bolivia, N. C.