

## "They Gave Him A Gun" And "The Go Getter" At Carolina

With Spencer Tracy, Gladys George and Franchot Tone in the leading roles, "They Gave Him A Gun" opens Thursday at the Carolina Theatre.

Franchot Tone deserts genteel characters to play a "tough guy"; Spencer Tracy deserts the "tough guy" character for a kindly adviser of a wayward youth; and Gladys George, following her success in "Valiant Is The Word For Carrie," plays another valiant role as a war nurse who marries a racketeer she fails to save in "They Gave Him A Gun."

**NEXT WEEK**  
Movie fans who go Monday to the opening of the comedy-drama, "The Go Getter," are warned by critics to be prepared for a shock right at the beginning of the picture.

George Brent meets up with Peter B. Kyne's famous old fiction character, Cappy Ricks, played by Charles Winninger, whom everyone remembers as the Cap'n Andy of "Show Boat" both on the stage and the screen.

Brent also meets Cappy's daughter Margaret, who is played by the ethereal blonde star, Anita Louise.

The movie deals with the various tests through which old Cappy puts Brent, before giving his consent to a courtship—and how Brent successfully emerges from them.

### HAVE BOOKLETS

In addition to having a supply that is ample to take care of all requests that come in for literature, the Civic Club has between two and three hundred more booklets that it would like to mail out in the next week or so. The names and addresses of people to whom it may be worthwhile to send a booklet will be appreciated by the club.

### SIGHTS SAILFISH NEAR SOUTHPORT

(Continued from page 1)  
It is already well established that there are plenty of tarpon, baracuda and dolphins. One Charlotte physician took eight dolphins in one morning. The Coast Guard here saw as many as twelve baracuda swimming about a single old wreck at one time. Commercial fishing boats very frequently take large tarpon while making sets.

Local fishing boats never go out over twelve miles. The big game fish are supposed to be around 20 miles offshore. The explorer who definitely locates them and establishes the fact that they can be taken off Southport will be doing a great thing for the town.

### SOUTHPORT LOSES TO WHITEVILLE

(Continued from page one)  
tion all the way. He fanned 10 men.

D. I. Watson had a double and a single to show for his two times up against the clever south paw hurler, while Spencer banged his pitching rival for a triple, longest hit of the game.

### Menhaden Boat Aground, At Lockwoods Folly Inlet

(Continued from page one)  
No fault can be laid to Oak Island men for not floating the vessel sooner. They are simply not equipped for pulling.

### Jury Unable, Reach Early Verdict In Second Degree Trial Of Donald Skipper

(Continued from page 1)  
the powerful Scott.

Solicitor Burney charged Skipper and Scott were engaged to-

gether in the liquor business, that they quarrelled over the profits and Skipper shot and killed his partner. He attacked the testimony of the negro, Adams, and wrested from him the admission he had just been released from the federal penitentiary in Atlanta, where he had served a term for illicit liquor dealings.

### MRS. DOSHER TO HEAD HOSPITAL AUXILIARY GROUP

(Continued from page 1)  
Doshier, Mrs. Annie K. Vitou, Mrs. E. H. Cranmer, Mrs. J. W. Ruark.

Serving committee: Mrs. Nell Niernsee, Mrs. C. Ed Taylor, Miss Mary Weeks, Mrs. Larsen, and Mrs. G. D. Robinson.

There will be no meeting of the Auxiliary until the 2nd Wednesday in October.

### Considerable Conjecture About Quarantine Station

(Continued from page 1)  
chman at the property, gaffed a nine pound sheephead over there one day last week. Practically all the fish that any party could want could be taken any day in the year.

Built on pilings, the station is an island in itself and is probably one of the coolest and most comfortable places about Southport in the summer time. But for the fact that it can only be reached by boat it would afford excellent accommodations for summer visitors to Southport.

### VACATION BIBLE SCHOOL CLOSES

(Continued from page 1)  
Claude, McCall, Harvey Brown and Morris Cranmer.

Beginners department: Superintendent, Miss Myrtle Brown; assistants: Miss Esther Mae Potter, Miss Josephine Smith and Miss Louise Reese.

Primary Department: Superintendent, Mrs. George Whatley; assistants: Miss Marion Watson, Miss Mary Alice Lewis, Miss Ruth Taylor and Miss Ruby Ledford.

Junior department: Superintendent, Miss Rebecca Alexander; assistants, Miss Lucy Anderson, Miss Susie Sellers and Miss Vera Jorgensen.

Intermediate department: Superintendent, Miss Eva Farr; assistants: Miss Elizabeth Taylor and Miss Anna Taylor.

### CITIZENS COMMITTEE SUBMITS REPORT TO BOARD COMMISSIONERS

(Continued from page 1)  
and the county is now threatened with the withdrawal of state and Federal aid to this work, because of the present inability of the county to meet the amount required. We deem it a calamity to the future value of this coun-

ty if the forestry protection must be cancelled.

"Our study of the facts pertaining to this question, and the situation in which the county finds itself at the present time, forces us face to face to the unanimous conclusion that Brunswick county cannot operate its proper governmental functions on the small share or portion of the total tax levy. The county cannot pay the officials and pay for the agencies operated anything like the present remuneration with the small share of twenty-five cents per hundred of the \$1.50 levy. It is found that if every dollar of the tax levy was collected (an impossible supposition) that there would not be half enough money made available for the present budget and, certainly not enough available to operate a desirable county government.

"We have been furnished comparative figures from other counties of supposed similar ability to that of Brunswick, showing an apparent excess operating cost of county government in the county which this committee is not in position to analyze, but this committee does recommend that a careful study be made of that phase of the question, to the end that any unnecessary service or expense be eliminated, and that any excess expenditures be curbed or eliminated.

"We find the proposed plan in so far as the funding and refunding details of the county indebtedness is concerned to be as reasonable as a debtor county could ask, but we also find that the requirement of so large a share of the tax levy to be applied to debt service, (1) to meet interest and (2) to provide a sinking fund, leaving so small a share for county government purposes that the plan is unworkable under present values and conditions.

"We find some of the 'special Covenants in the plan to be impracticable and objectionable, viz: (1) The agreement to produce immediately not less than \$60,000 a year for debt service; and (2) the attempt to limit the operating expenses of the county after 1940 to not over \$50,000 per annum.

"There are also features in the 'Miscellaneous Provision' of the plan that are extremely objectionable and should not be insisted upon by the creditors in the proposed mutual effort to work out a reasonably fair workable adjustment of the obligations.

"We suggest the county should not be expected to pay in addition to the cost of printing new bonds the expense of legal opinion, to cost not over \$6000.

"We deem it unwise to undertake to agree to fetter the county in future financing.

"We deem it improper to bind

the county to suffer a revivor of old obligations in an event after the Funding and Refunding bonds are accepted and delivered.

"We deem it unwise to make any particular agreement as to bankruptcy court procedure to be pursued at the instance and election of the creditors of the county.

"Therefore, it is our opinion that the Board of County Commissioners should ask for a revision of the plan to the end that the County Government may be provided necessary funds to operate upon, and that the requirement to provide a present sinking fund to the extent contemplated by the plan may be deferred until such time as the tax paying ability of the county will justify it.

"We suggest and insist primarily that the bond holders accept lower stipulated interest on the new bonds for the present, leaving the requirement of a sinking fund to be fixed by the Local Government Commission, for the reason that at the present time the financial ability of the county will not admit of more burden than to pay the interest on the debts at the lower rates and to pay the necessary county expenses as provided by law.

"We likewise insist that a study be made of the growing expense of county government and if necessary that legislation be proposed to permit a legitimate rate for county government expenses and such changes in the

form of local government as may be advised in order to insure efficiency at the least cost to the tax payers of the county.

"We recommend that at least \$15000 be permitted withdrawn from the Debt Service funds on deposit in the local bank, and be placed at the disposal of the Board of Commissioners to meet present emergencies and urgent necessary expenses of county government, which have already been incurred, and must be incurred within the next few months.

"We further recommend that the rate for the 1937 levy be made approximately as follows:

Debt Service	.....\$ .75
School	..... .20
General County	..... .55
Total	.....\$1.50

"We think that the above rate is fair and practical, and may possibly permit the county to operate.

"The members of the commission do not favor a repudiation. It is recognized that the county must set its affairs in order to successfully meet the situation. It appears imperative to produce more revenue and also to put into practice a more rigid economy in order to meet the spirit of the plan.

"We submit finally that the happiest way out of the present problem to both creditors and debtor, will lie along the line of lending encouragement to the tax payer by not increasing the

tax rate, by a cultivation of the proper spirit among enlightened and willing citizens to carry on in a way that will enable the debtor county to maintain self-respect and at the same time meet obligations to an honorable

and worthy extent.

"Respectfully submitted, the 9th day of June, 1937,

C. ED TAYLOR,  
GEO. R. FOULKE, Jr.  
H. L. CLEMMONS  
L. T. YASKELL

## FOR SALE

### Fishscrap-Fishmeal

AT PLANT

### Menhaden Fishscrap & Oil Co.

(Near Beach Bridge On Fort

Caswell Road)

SOUTHPORT, N. C.

### BOYETTE HORSE-DRAWN

TOBACCO SPRAYERS

SMITH'S HAND SPRAYERS

ROOT DUSTERS

Arsenate of Lead and Paris Green

ONE HORSE BENTHALL

WALKING CULTIVATORS

Plenty of Good Sound Soy Bean Seed

HARDWARE and PAINTS

We Are Now Selling

McCLAREN TIRES

And would like for our customers to see this new tire we have!

Wilson Implement Company

WHITEVILLE, N. C.

## QUEEN OF HIGH DIVERS

Attractive Dorothy Poynton Hill,  
Olympic Champion



GET A LIFT WITH A CAMEL!

## For GARAGE SERVICE

PHONE US

29-J

We employ a staff of courteous, efficient men who are ready to render you the last word in SERVICE. We will call for your car, render any needed service and return it to your door.

## Hood Service Station

Southport, N. C.

## Kodak Supplies

Cameras . . Verechrome and Standard Films

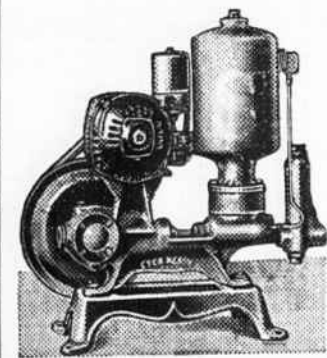
48-Hour Developing Service

## Watson's Pharmacy

SOUTHPORT, N. C.

## SEARS Record Days - JUNE 18-26

IT'S EASY TO HAVE MODERN CONVENIENCES IN YOUR HOME—



### Use SEARS EASY PAYMENT PLAN

To Install A Complete PLUMBING SYSTEM!

Direct Pressure Electric Water Pump

A compact, Economical Reciprocating pump outfit that supplies fresh, running water as you need it. Delivers 250 Gallons per hour. No storage tank required.

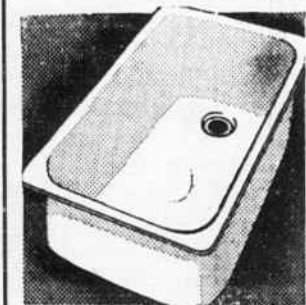
\$34.88

\$4.00 Down \$5.00 Month . . Small Carrying Charge

### SAVE ON THESE PUMPING NEEDS

- WELL POINT (1 1/4"x30") .....\$1.98
- GALVANIZED PUMP PIPE (1 1/4"x5') .....85c
- BRASS FAUCET (1-2" size) .....69c
- COPPER TANK FLOATS .....19c
- GALVANIZED "T" (1-2" size) .....10c
- GALVANIZED "L" (1-2" size) .....08c
- GALVANIZED NIPPLES (1-2" size) .....05c

### PORCELAIN ENAMEL STEEL SINK



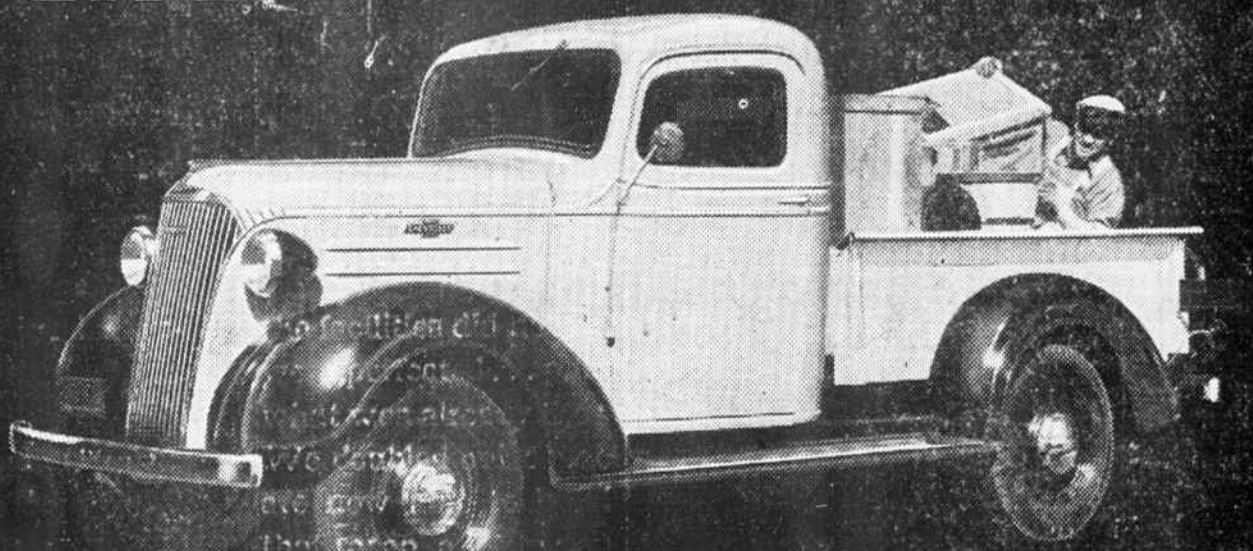
\$3

A light all steel Flat rimmed Sink at an extremely low price. Size 16x24 in. Special during this sale.

Sears, Roebuck & Co.

WILMINGTON, N. C.

# CHEVROLET TRUCKS



Chevrolet users say:

"They're the most economical trucks for all-round duty"

Perfected Hydraulic Brakes . . . Greatest Pulling Power in Their Price Range . . . New Steelstream Styling



FOR ECONOMICAL TRANSPORTATION

"Give us a truck with ample pulling power . . . one that is economical . . . one that will give reliable service over a long period for the least money."

That is the demand of all truck operators, and thousands of Chevrolet users will tell you that the best answer is—Chevrolet trucks!

Chevrolet trucks have the greatest pulling power in their price range . . . because they have a New High-Compression Valve-in-Head Engine which wrings the last ounce of power out of every gallon of fuel.

Chevrolet trucks are the most economical for all-round duty . . . because they give maximum gas and oil mileage, and will keep on serving over a long period with minimum care and attention.

And Chevrolet trucks are safer, more modern, more durable . . . because they're the only low-priced trucks with Perfected Hydraulic Brakes, New Steelstream Styling, Pressure Stream Lubrication, and extra-strong Chevrolet construction throughout.

Ask your nearest Chevrolet dealer for a thorough demonstration—today!

General Motors Installment Plan—monthly payments to suit your purse.

CHEVROLET MOTOR DIVISION, General Motors Sales Corporation, DETROIT, MICH.

"MORE POWER per gallon LOWER COST per load"

Elmore Motor Company  
Bolivia, North Carolina

WILMINGTON Carolina WILMINGTON

A NOVEL AFFAIR WITH INTRIGUE  
Become a great picture Afire with contrast

SPENCER TRACY  
GLADYS GEORGE  
FRANCHOT TONE  
in  
"THEY GAVE HIM A GUN"  
with  
Edgar Dearing  
Mary Treen  
Cliff Edwards  
An M-G-M Picture

Cappy Ricks...  
with his bag o' tricks is back to make you roar!

PETER B. KYNE'S  
"THE GO-GETTER"  
with  
GEORGE BRENT  
ANITA LOUISE

THURS., FRIDAY, SATURDAY, JUNE 17-18-19  
MONDAY and TUESDAY, JUNE 21-22—Only