

Tax Blanks Now Ready For Public

Public Should Be Careful In Executive Withholding Certificate

Federal income tax blanks are now ready for distribution according to information released by Raymond D. Christman, chief zone deputy of the Wilmington Major Zone, whose headquarters are located in Wilmington. Mr. Christman states that there will be ample forms if people will take care of their blanks and use them carefully.

Within a short time there will be an itinerary published in this paper showing the dates and placed where field deputies will be located for the benefit and convenience of taxpayers who desire the services of deputies in preparing their returns.

Mr. Christman points out that his investigation has developed many cases where employees have misled their employers with respect to their withholding status. That is, they have claimed more dependents than they actually have under the law. Such violations come within the text of the law which follows: "Any person required to supply information to his employer under section 1622 (h), who willfully fails to supply information thereunder which would require an increase in tax to be withheld under section 1622, shall, in lieu of any penalty otherwise provided, upon conviction thereof, be fined

not more than \$500.00, or imprisoned for not more than one year or both."

It would therefore be advantageous," said Mr. Christman, "to each taxpayer before executing his withholding certificate to his employer to acquaint himself with the law and to make sure of his claims as to such dependents and to see to it that the law is not violated, otherwise such taxpayer may find himself in an embarrassing position.

The deputy said that such cases would be turned over to Special Agents of the government for the purpose of preparing cases against offenders.

Town Creek Men Fixing Pasture

J. J. Ramsauer and his son-in-law, Gilbert Reid, both of Town Creek township, have ordered a great deal of limestone and are preparing to distribute it over 100 acres of pasture land that is to be planted in lespedeza and carpet grass this spring. Last fall they bought two car loads of Hereford heifers and added them to the herds which they already owned. Many of the heifers were dropped their calves this spring. It is planned to butcher the males when they attain suitable weights, the heifer calves will be added to the great number of breeders they already have. This winter they are grazing the cows on small grain and also feeding some hay.

Liquid water droplets float in the air at temperatures as low as 20 degrees below zero Fahrenheit without freezing.

The cost-of-living index in South Africa has risen to a new high of 25.3 per cent above pre-war, the rise being principally in food, fuel, and rent.

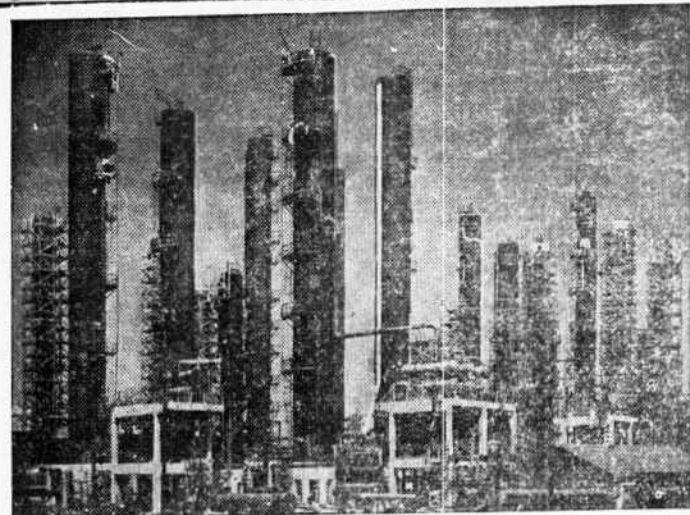
Lieutenant Eleanor Niernsee Visits Southport, Australia

Niernsee's picture has always appeared in the limited number of scenes that formed a page. Through the courtesy of the Feature Editor of the Baltimore Evening Sun, we were recently able to secure one of these pictures and it is being reproduced in this issue.

Lt. Niernsee writes that there is a town named Southport in Australia. Recently when she was given six days leave from her hospital duties, in order to rest, she went to Southport, Australia, and took her leave there.

Organizing Lower Cape F. Soil Conservation District

(Continued from page 1)



PORT NECHES, TEXAS—Synthetic rubber for such vital products as essential tires is on the way! In these huge towers here on the Texas plains, the butadiene, chief ingredient of man-made rubber, will be manufactured for 28,000,000 tires. Five oil companies are building and will operate the plant on a non-profit basis. Approved by War Department.

Calabash Creek to the Waccamaw River at Ward's landing. This involves a distance of four and a half miles and for that distance there is a fall of a little over seventeen feet, from the river to the creek. The canal, once open, will have a swift flow that will deepen and keep it open. It will, says the engineers, carry off the flood water from the Waccamaw and give drainage to a great area. It is understood that this Calabash to the Waccamaw River canal is only one of many undertakings that are planned for the district.

In accordance with the law, public hearings in the matter will be held the last of this month, at designated places. These hearings will be at Leland high school; Bolivia High school; Wainabow post office; Supply, County Agent's office; Southport, Court House; Shallotte high school; Waccamaw, high school and McLamb's store.

These hearings will begin at Leland on the 24th and end at McLamb's store on the 25th. Next week's paper will carry the legal notice of the hearings, giving places, date and time for each hearing. The hearing will be in charge of officials of the State Soil Conservation Committee.

ROVIN REPORTER (Continued From Page One) badly needed for ambulance drivers. A little over six weeks ago Miss Harrelson reported for service with the WAVES and is now well on her way to getting her wish.

Orton Plantation is this week planting around twenty-five acres in spring oats in which lespedeza will be sown later in the spring. As a rule, spring oats do not usually do so well in this coastal area. They are, however, said to furnish a good foundation for the planting of lespedeza, a crop that is rapidly becoming known as one of the best hay and soil improvement crops that can be grown in the southland. Lespedeza was practically unknown in this state until a dozen or so years ago when Tom Broom, veteran Union County Farm Agent, saw its possibilities. Union County now produces a large part of the lespedeza seed that is used in the United States and there is probably not a county agent in North Carolina who does not advocate its planting, both for the hay crop and as a legume. County Agent J. E. Dodson is among the warm advocates of lespedeza planting in Brunswick.

There is an old, old saying that witches ride white horses at night. In support of the story any owner of a white horse will tell you of how often he has gone to his stable and found the mane of his horse made up into stirrups which the witches are supposed to have made to ride the

that all meetings are to be held at the school houses.

FEW DEFENDANTS IN COURT MONDAY

(Continued From Page One) of costs, costs remitted.

Newman Calson, drunken driving, \$50.00 fine and costs, fine remitted.

Rice Gwynn, Jr., assault, state asked for jury trial which sent case to superior court.

Dave Smith, trespass, and possession, jury trial asked for and defendant bound over to superior court.

Mrs. Ethel Hewitt and Arsel Evans, assault, continued.

Sam Moultrie, speeding, defendant failed to appear and capias issued for his arrest.

Moe Patton, slander, continued. Charles A. Hollis, speeding, called and failed to appear, capias issued for his arrest.

Charles Council Pinkston, speeding, 30 days on roads, judgment suspended on payment of a fine of \$25.00 and costs.

INCOME INCREASES IN BRUNSWICK

(Continued From Page One) is in contrast to the 1940 report of 351 average employment and \$192,795 wages paid. Such an increase in employment has given the Commission a much bigger job of record keeping, Dees said. While average employment indicates the number of jobs, because of labor turnover, there are often twice as many individual workers for whom wages are reported. The Commission keeps a separate earnings account for each one of them.

WALTON FIRST TO OFFER FOR OFFICE

(Continued From Page One) fices.

As a usual thing the first of a political year finds half a dozen men, of both parties, expressing their intention of running for various offices. The first of this year, however, has not brought forth any statement of definite intentions from any one with the exception of Walton. This may mean a lessening of interest on

COME HERE FOR YOUR AUTO NEEDS

ODELL BLANTON SUPPLY, N. C.

Ain't Love Grand!



CHILDREN'S COLDS

FOR DIRECT RELIEF from miseries of colds—coughing, phlegm, irritation, clogged upper air passages—rub throat, chest, and back with Vicks VapoRub. Its poultice-and-vapor action brings relief without dosing.

ALSO, FOR HEAD COLDS "sniffles," melt a spoonful of VapoRub in hot water. Then have the child breathe in the steaming vapors.



Last Year We Made Loans For The Following Purposes:—

- 1.—To—Finance auto purchases or trade.
- 2.—To—Pay hospital expenses.
- 3.—To—Repair dwellings and farm buildings.
- 4.—To—Pay school expenses.
- 5.—To—Buy farms or additional land.
- 6.—To—Settle estate in case of death.
- 7.—To—Operate farm on and house crop.
- 8.—To—Repair automobiles including new tires.
- 9.—To—Finance business trips.
- 10.—To—Go into business with.
- 11.—To—Buy auto and truck license.
- 12.—To—Send to men in Service for trip home.
- 13.—To—Refinance car or truck.
- 14.—To—Pay scattering small bills.
- 15.—To—Buy merchandise and operate business on.

When you need to borrow money why not let us serve you? You can borrow on your car quickly. Our service is friendly and confidential. Your car fully insured. Up to twelve months to pay! Up to thirty-six months on real estate loans.

BRAXTON'S

MRS. GORDON HINSON, In Charge of Loan Dept.

the part of both democrats and republicans. Again, it may only indicate that prospective candidates are in no hurry to come out. A few weeks from now may see both parties with plenty of candidates out working for various nominations.

MUCH INFLUENZA IN A MILD FORM

(Continued From Page One) The past few weeks in Brunswick have been marked by the absence of deaths from any causes. This gratifying condition is all the more pronounced in view of the large number of cases of flu that have been prevailing. The absence of serious consequences from such illnesses appears to be due largely to the care that people take of themselves when flu strikes. As a general thing, the sick have been going to bed and staying there at the first indication of the disease. Health authorities say that this is the best possible thing they can do.

WICKARD URGES FARMERS TO CUT MORE PULPWOOD

forestry practices. Also, the Forest Service is including increased production of pulpwood as a major objective of its program, initiated at the request of the War Production Board, to stimulate the output of forest products needed for the war.

War Food Administrator Jones said, "Farmers constitute one of the biggest groups of farm products users." Because of the critical shortage of both pulpwood and lumber, he urged farmers to: Increase production from farm woodlands during the winter and provide labor for forest industries during the slack winter season on farms. He called attention to the Selective Service regulations which permit farmers and farm laborers to do such seasonal work without losing their deferred classification in agriculture.

Increased production from farm woodlands is needed for the manufacture of containers, which are highly essential to food production, War Food Administration officials stated. Many veneer mills, basket and crate factories, and pulp and paper mills depend to a large extent on supplies of logs and bolts produced by farmers. Current shortages in supply have been attributed in part to a slackening in production from farm woodlands. Increased production of these forest products by farmers themselves will aid in assuring a supply of containers sufficient for the marketing of 1944 crops.

To market the fruit and vegetable crop in 1944 some 150 million new baskets and hampers, 450 million berry cups, 50 million wirebound veneer boxes, more

OUR DEMOCRACY



WE CAN BUY NECESSARY THINGS AND SET ASIDE A PORTION OF OUR EARNINGS IN WAR BONDS, SAVINGS ACCOUNTS AND LIFE INSURANCE. THEN WE WILL HAVE SECURITY FOR THE FUTURE.

than 300 million mailed boxes and wraps, liners, pads, bags, crates, and large quantities of cartons, will be required. Other paper and pulp products for farm crops expand these needs.



Pepsi-Cola Company, Long Island City, N. Y. Franchise Bottler:—Pepsi-Cola Bottling Co., of Wilmington, N. C.

How American Farmers Are Meeting the Pulpwood Challenge

EARLY in 1943 when the country was faced with a disastrous pulpwood shortage, the Secretary of Agriculture said, "The only place we can look for additional supplies is from the farm woodlot". And the farmers of America did not let him down. Their patriotic response helped a lot to supply much needed pulpwood for war industries.

Now, as we enter 1944

It is clear that a serious pulpwood shortage will continue. But farmers have learned that pulpwood cutting is good business as well as sound patriotism. Now is the best time to thin woodlots when pulpwood prices are at their peak. And recent rulings of the War Manpower Commission encourage farmers to cut pulpwood in off seasons by counting it as war unit credits toward deferment.

And so the farmers of America are asked to make pulpwood cutting an important part of their 1944 work program. It is off-season work; profitable work; patriotic work. Do all you can. Your country needs every cord you can cut. Keep in touch with your local pulpwood committee.



Brunswick County Pulpwood Committee

JOHN B. WARD LENDON CLEMMONS FRANK C. LENNON H. O. PETERSON

SOUTHERN BELL TELEPHONE AND TELEGRAPH COMPANY INCORPORATED



Certified seed potatoes from the three leading producing areas, taken from regular carlot shipments, were tested for yield at the Eastern Shore Experiment Station, Onley, Va., in 1942. Of the 10 highest yields of prime potatoes, 7 were from North Dakota seed, including the 2 highest. Similar results were obtained in 1941 and 1942. Can you afford not to use—

NORTH DAKOTA CERTIFIED SEED POTATOES. Inset that your dealer supply you with this quality seed. STATE SEED DEPT. FARGO, N. D.

—STOVES—
WOOD & OIL STOVES
WOOD & COAL HEATERS
RUGS & FLOOR COVERING
SCREEN WINDOWS & DOORS
GENERAL HARDWARE
CITY CUT-RATE STORE
SOUTHPORT, N. C.

"Made to measure" LOANS FOR FARMERS

NO two blades of grass are exactly alike. And no farm credit problem is entirely like any other. You naturally want a loan that's fitted to your needs. Money must be available when you want it, repayable when you have it, and the terms must all be in harmony with your particular requirements. We like to make loans "to measure" and will be glad to go over your entire credit problem with you. Let's discuss it now, even if you don't want the cash until later.

Your Financial Friend
WACCAMAW BANK AND TRUST COMPANY
MEMBER FEDERAL DEPOSIT INSURANCE CORPORATION