

Southport Boys Set Hot Pace

Local Entries In Wilmington Sunday School League Playing Good Brand Of Basketball

Under the leadership of the pastor, the Rev. H. M. Baker, and with John Simmons assisting in the coaching, the Southport Baptist church now has two fine basketball teams playing in the YMCA Sunday School League in Wilmington. The first team has been playing since the schedule got underway, several weeks ago and at this time is tied for second place standing in the league with a good chance of copping the pennant in the finals. The second group of Southport

boys was formed last week to take the place of the St. James church team in Wilmington, that church having decided to drop out and as it was desirable to hold the league intact. This team plays Temple Thursday night. The original team will play Trinity Saturday at noon.

Both the teams have recently been outfitted with new black and gold uniforms. Temple is the top team in the league and the main hurdle that the Southport boys must go over, if they are to win the pennant. While all of the league are played in Wilmington a special game is being arranged to be played here between Temple and the "A" team sometime before the end of this month. The proceeds will go to the Southport Baptist church building fund.

Traces of air have been detected at altitudes up to 200 miles.

Grower Arrives To Start Work

New Jersey Man Ready To Begin Operations In Production Of Tomato Plants For Shipment North

Equipped with a bulldozer and a tractor and plows as the main implements, Everett H. Sheppard, of Shiloh, N. J., will start clearing a 135-acre tract of land on the River Road Thursday of this week. Mr. Sheppard and his brother arrived here Tuesday and are only waiting a clearing up of the weather to begin operations. Forty acres of land that was in farm crops last year will be planted in tomato seed. This planting will be done in February, according to Mr. Sheppard. He deems that the land which he is now starting to clear will be too fresh for tomato plants the first year. Accordingly, he will plant most of the land he clears this winter in water melons, or some other crop. It will all be ready for tomato seed next year.

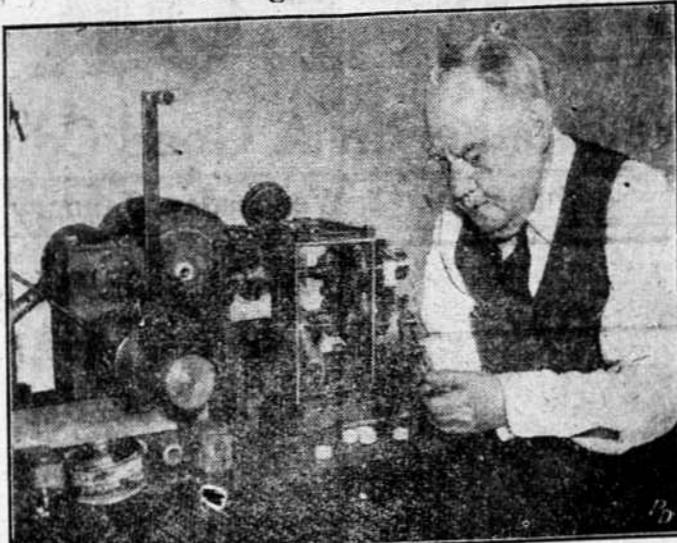
The 40 acres that are to go in seed in February are on the Robert McRackan land on the River Road, three miles from Southport. The 135 acres which he will clear is on the same road, near Marsh Branch, on land which he leased with the option of purchasing from Mrs. Helen G. Bragaw of Southport.

ON THE PRINCETON

James Alfred Jones, son of Mrs. Ellen Clemmons, of Supply, has been assigned to the aircraft carrier Princeton for duty. The young man is a seaman, second class. The Princeton is now at San Diego, California.

Grain was the principal crop of Egypt until the 19th Century, when cotton took first place.

Testing A New Idea



Dickerson C. Baker, Holyoke, Mass., inventor of automatic thread machinery, is shown operating an experimental winder head which is expected to improve efficiency of present winding units. Holder of some 25 patents on various precision-wind processes, he is regarded as one of America's foremost authorities on the precise, painstaking art of "packing" thread on small, tightly wound and self-contained bobbins like those shown in the foreground above. Mr. Baker has devoted a lifetime to finding better ways for the textile industry to turn out products faster and more economically.

Randolph Grange Is Typical Unit

RALEIGH—The Trinity Grange of Randolph County is due to be featured in a March issue of COLLIER'S as one of a series of articles devoted to American organizations. The Randolph grange was chosen as being "typical" of that organization's units.

Writer Wade H. Nichols and photographer Ike Vern are producing the piece, said the State Advertising Division.

Farmers Should File Income Tax

If Gross Revenue Is Greater Than \$500, Law Requires Each Person To Make Return

The beginning of a new year means that income tax reporting time is here, says C. Brice Ratchford, in charge of Farm Management for the State College Extension Service, and farmers along with most other people will have to consider filing their returns.

Many Tar Heel farm families will not have to pay any income tax, Mr. Ratchford said, but the greater majority of them will have to file a return.

If you are in doubt as to whether you have to file a return, then here is the deciding factor. If the gross income from your farm was more than \$500 during the year, you should file a return. Since all farm expenses may be deducted along with the personal exemption of \$500 for self, \$500 for wife, and \$500 for each dependent relative, this will mean that a large number of farmers will not have to pay any tax. However, there is a severe penalty for not filing a return.

Farmers should study the instructions issued with the income tax forms and take all legal deductions, Mr. Ratchford said.

Chevrolet Builds One Million Cars

With the production today of its 1,000,000th vehicle in 1947, Chevrolet became the first single company in the automobile industry to manufacture a million cars and trucks a year since before the war.

The 1,000,000 total includes passenger cars, trucks and commercial vehicles. The last time Chevrolet manufactured 1,000,000 vehicles a year before 1947 was in 1941, when domestic production reached 1,173,799 units.

Water vapor may compose up to five percent of a given volume of air. A tornado is seldom more than 200 yards in diameter.

Earthworm Farm Sought By Woman

RALEIGH—The State Advertising Division has a letter from an Ohio lady who wants to buy around 3 to 5 acres of land, near a city of 25,000 or more population, where the air is not polluted by smoke or fumes.

Object: Establishment of earthworm farm. The worms are for sale to gardeners, poultry raisers and, of course, fishermen.

Farms To Buy Or To Rent Are In Demand

RALEIGH—Last week the State Advertising Division released the names of over 100 persons who want to buy or rent farms in North Carolina, as well as a number who want jobs on North Carolina farms.

A list of these prospects may be had by writing the Division at Raleigh.

Only about 150th of the earth's atmosphere is above an altitude of 21 miles.



McNAIR'S tobacco seed is yield-tested, certified and grown only on McNair's farms. This means that our seed must pass strict field and laboratory tests before it is placed on the market. Reduced quotas require that you make maximum returns per acre in 1948. Plant McNair's Yield-Tested seed, the seed in the familiar Tobacco Barn package. Grown on McNair's Farms by McNair's Yield-Tested Seed Co., Laurinburg, N. C.

SOLD BY:
Local agents:
Southport Trading Co., Southport, N. C.
Bolivia Cash Store, Bolivia, N. C.
Mintz and Co., Supply, N. C.
L. C. Babson, Freeland, N. C.
A. P. Henry, Jr., Wintona, N. C.
R. L. Rabon, Lehigh, N. C.
The Country Store, Longwood, N. C.
L. E. Babson, Ash, N. C.
Shallotte Trading Co., Shallotte, N. C.

Ulrich To Leave Lake To Accept Work At Wilson

Pastor Tenders Resignation To Lake Waccamaw Baptist Church Congregation Sunday Morning

LAKE WACCAMAW, Jan. 12.—Rev. Evans Ulrich tendered his resignation to the congregation of Lake Waccamaw Baptist Church Sunday morning at the 11 o'clock service.

Requesting that his resignation become effective as of Feb. 29, the local minister announced that he accepted a call to Five Points Baptist Church at Wilson and would enter upon his work there on the first Sunday in March.

Rev. Mr. Ulrich came here in 1942 from Raleigh where he had been doing supply work following his ordination by the State Baptist Convention.

A native of Maryland, he spent his early life in business and entered the ministry in 1938. He was graduated from the American Bible College and Mt. Vernon University, and is now a member of the board of directors of the latter institution.

During his five years at Lake Waccamaw, Rev. Mr. Ulrich has rendered outstanding service in both church and civic affairs. He

Resigns Pastorate



REV. EVANS ULRICH, pastor of Lake Waccamaw Baptist Church, who resigned yesterday to accept the pastorate of Five Points Baptist Church at Wilson.

is now clerk of the Columbus Association, president of the Columbus Baptist Pastors Conference and vice president of the Columbus Ministerial Association, an inter-denominational group.

During the recent war, Rev. Mr. Ulrich edited the Livingston-Waccamaw Tidings, a magazine of back home news for men in the armed forces.

Information On State Requests

RALEIGH—Some 100 out-state farmers are writing State Advertising Division every day asking for information about advantages of moving to state, particularly about the advantages of livestock operation. The inquiries are being processed by the current state agriculture campaign.

Oil Circulators



- FEATURES:
- 1 Lasting beauty. Modern design.
 - 2 Finger tip control. No stooping. Just dial the heat you want.
 - 3 The Oil Control Valve built-in.
 - 4 Full circulating principle—cold air in at bottom—warm air out at front louvers.
 - 5 Front warm air louvers direct heat where you want it—in the living zone—not direct to ceiling.
 - 6 Heavy lifetime heating element—rectangular shape increases heating surface 25%. This means more heat with less fuel.
 - 7 The rectangular heating element is streamlined—speed the warm air flow through the front louvers.
 - 8 The cozy cheer of a fireplace can be obtained by opening the front door—direct radiant heat.
 - 9 Nationally accepted "Breese" Burner. "Automatic Products" or "Detroit Lubricator" Oil Control valve is standard equipment.

ONE - STOP STATION

FILL UP WITH GAS AND OIL . . . Get your tires checked. Get a grease job if you need one. . . Do your Grocery Shopping while you wait.

ENNIS LONG SERVICE STATION

U. S. No. 17 Supply, N. C.

ANNOUNCEMENT

The Shallotte Livestock Market . . . will be open for the purchase of hogs and cattle, every day, beginning Monday, Dec. 1, 1947, and continuing each day thereafter.
DAILY MARKET PRICES WILL BE PAID
W. McKinley Hewett, Mgr. Shallotte, N. C.

AUTOMOBILE PARTS

No matter how far you may travel looking for them, you cannot find better automobile parts than we are prepared to deliver to you at either retail or wholesale.

ODELL BLANTON
General Merchandise
SUPPLY, N. C.

City Cut-Rate
Store
SOUTHPORT, N. C.

REFRIGERATORS . . . WASHING MACHINES

. . . We have them in stock, ready for delivery to your home for immediate service and satisfaction.
For complete home furnishings and electrical appliances that will give you years of dependable service, we invite you to examine our merchandise. . . . Compare our prices.

We stand ready and able to deliver complete wiring devices to the people of our county.
KING'S ELECTRICAL SALES COMPANY
Shallotte, N. C.

PAY YOUR 1947 TAXES PENALTY WILL BE CHARGED AFTER FEBRUARY 1st

You can make a worthwhile savings by paying your taxes during the month of January.

E. R. WEEKS, Auditor
City of Southport

HOT DOGS LUNCH COUNTER

We are prepared to serve you good food under the best sanitary conditions.

CHANDLER ROURK
SHALLOTTE, N. C.



On a heavy-duty job, give me new Advance-Design CHEVROLET TRUCKS

and here's a "load" of reasons why . . .



Only Advance-Design Trucks Have All These New and Finer Features:

- ★ Cab that "breathes"
- ★ Flexi-Mounted cab
- ★ Uniweld, all-steel construction
- ★ Larger, more durable, fully adjustable seat
- ★ 22% greater visibility
- ★ New, rear-corner windows
- ★ Stronger, new frames
- ★ Full-floating hypoid rear axles
- ★ Specially designed hydraulic truck brakes
- ★ Valve-in-Head Thrift-Master or Load-Master engines
- ★ More efficient loading (stake and high-rack bodies)
- ★ New, thorough sealing insulation
- ★ Standard cab-to-axle-length dimensions permitting interchange of bodies
- ★ . . . and MANY more!



Brother, how these stronger, new frames stand-up! Wheel-bases are longer, too, for better load distribution. And the brakes are exclusively designed for greater brake-lining contact!



There's nothing like the cab that "breathes" for comfort! . . . fresh air is drawn in from the outside—heated in cold weather—and used air is forced out. The cab is cushioned on rubber—Flexi-Mounted—with 12 inches more foot room and eight inches more seating space. There's 22% greater visibility, too, they tell me. The seat is fully adjustable. Man, this is it!



Look—rear-corner windows! Now it's a cinch to back up without jacking-up. Yes, sir, these trucks are brand new—really different with Advance-Design. And they're packed with power in the world's most economical engine for its size—Chevrolet's Valve-in-Head engine. Fresh air heating and ventilating system and rear corner windows optional at extra cost.



Here's a special, heavy-duty job and an extra-special truck! Take your pick from 107 different models and eight wheel-bases. There's one made for your special kind of job.

Come in and see these trucks—today! There's a Chevrolet Advance-Design truck to meet your specific needs and offer you TRANSPORTATION UNLIMITED!

Elmore Motor Co. BOLIVIA, N. C.

1948 LICENSE TAGS CITY OF SOUTHPORT NOW ON SALE.

These tags must be displayed on your automobile After February 1, 1948

JOHN D. ERIKSEN, Mayor
CITY OF SOUTHPORT

—SALE— SCHOOLHOUSE and SITE

The Brunswick County Board of Education will receive sealed bids up until noon Thursday, January 22nd, 1948, for the old

Battle Royal Colored School

located between Winnabow and Maco.. Separate bids may be submitted for the building and for the 1 1-10 acres of land, or bidder may make offer for both. The board reserves the right to reject any and all bids.

J. T. DENNING, Superintendent
Brunswick County Schools