

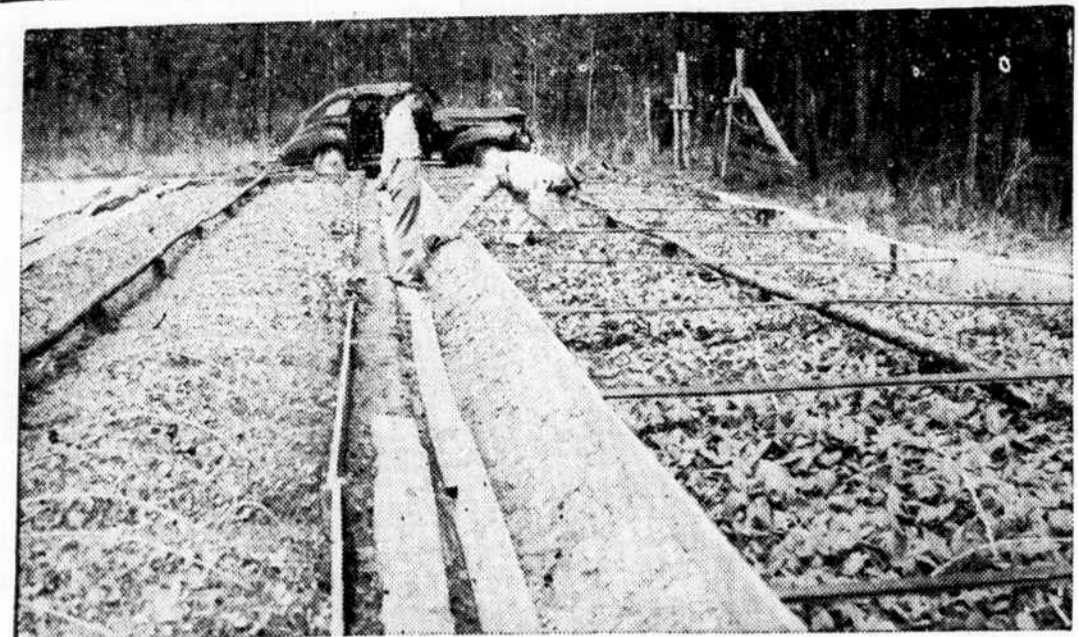
### Pig Loss Heavy In Fall, Winter

#### Mineral Mixture Is Best For Porkers; Soybean, Corn And Peanut Diet Is Deficient

Columbus County hog growers are aware of the heavy losses that occur during fall and winter months for practically all hog grown corn and soybeans, or soybeans alone, or peanuts alone.

Husbandrymen have found these crops are deficient in minerals and that a mineral mixture should be given to the hogs at all times. In several demonstrations that were conducted in the state of Georgia shows that there were less losses when a mineral mixture was fed. It appeared that these minerals strengthened the hogs digestive system and protein poison and digestive disorder are less frequent. In fall and winter soybeans and peanuts are less palatable and hogs often fail to eat sufficient grain to balance their rations. Dried soybeans and peanuts are too often available in the field

### Up-To-Date Tobacco Plant Bed



**WEEDING.**—Farmers must continually fight weeds and insects starting even before the seeds are planted in the beds. After the plants come up and until it is cropped the battle rages.

after late fall rains set in and a mineral deficiency will cause heavier losses as a result of eating the decayed beans or peanuts. Therefore, Columbus County farmers who plan to hog down

any of these crops should include a free choice of feeding a good mineral mixture and a full feeding of corn or other grain.

Although the hogs will utilize the soybeans about 1/10 pound of fish meal, or tankage should be fed to each hog daily. 1/10 pound per head hogs on corn and soybeans is sufficient and will give economical gains.

With the shortage of steam bone meal, N. C. Swine Extension Specialist have worked up two mineral mixtures that can be fed to hogs of Columbus County.

- Mineral no. 1: 40 pounds finely ground limestone 30 pounds steam bone meal 19 pounds common salt 1 pound powdered copperas only 1 ounce powdered blue stone
- Mineral no. 2: 50 pounds finely ground limestone 30 pounds hardwood ashes 19 pounds common salt 1 pound powdered copperas only one ounce powdered blue stone.

In mixing up this mineral mixture be positive that only one ounce of the powdered blue stone is added to the 100 pounds of mineral mixture. One ounce will help the animal in his growth and five ounces will probably kill the hog.

Be sure to provide plenty of fresh water at all times and see that mineral and grain are available, especially when hogging down soybeans.

### Farming Offers Many Ways To Take Time Off

#### Careless Handling Of Machinery Furnishes Numerous Chances For Subtraction Of Hands, Feet And Legs

"Where there's a will, there's a way." An old proverb goes something like that. It can be used to advantage in lots of ways. It works wonderfully, in case anyone on the farm is interested, in arranging co-operation with the doctor and druggist and in getting "a few days off" from work around the farm.

By very little effort in fact, acting about as usual on too many farms—farmers and their families can arrange for "a few days off." Here we offer just a suggestion or two about the tractor merely as a guide. Not of course, that any suggestion is needed because there are so many "opportunities" on most farms.

Our first suggestion concerns the tractor itself. If one is an energetic farmer and gets out to the field real early, there is better than average chance of being brought back a little after sunup. Why? Because the tractor, and the plows, disks, mowers, cultivators and other implements used with it, offer excellent opportunities for "a few days off."

With no trouble at all one can subtract feet and hands and legs and blood and maybe life—if one is of a mind to go that far—around farm machines. Quickest method is to be sure and throw away those "damn, worrisome shields and guards" around the power take-off shaft and start "fiddling" around it with any loose clothing or gloves one may have. Or one can climb to the rear of the tractor and yank that lever on the tractor and the two bottom plow while the tractor is still moving. It saves time and promises quick results.

If you would rather be closer to the house and not have to be carried so far, why not wait until noon when you drive the tractor to the house? Then follow these directions. (1) Stop at the storage tank near the barn, (2) decide to gas up (3) don't turn off switch (4) fill 'er up and (5) be ready to yell at your wife or someone to get the doctor. Also, is the barn covered by insurance? Far-fetched idea? Not if you read and study farm accident There are many other opportunities inside the home and around the barn. There is no need to wait for National Farm Safety Week to get started because one can arrange to be in the hospital at least once and maybe twice for "a few days off."

### BRING YOUR TOBACCO to Tabor City

WHILE IN TABOR CITY, VISIT Jennings Strickland Grocery

- GROCERIES
- FEEDS
- FRESH MEATS
- Ice Cream, Beer & Cold Drinks

### Enjoy Delicious Meals AT THE CITY CAFE

While Selling Your Tobacco In Tabor City

UNDER NEW MANAGEMENT COMPLETELY RENOVATED CITY CAFE, Mrs. Joe Spivey, Mgr.

### DURING THE TOBACCO SEASON AS DURING THE YEAR

Meet Your Friends At

### Harrelson's Pharmacy

Tabor City's AIR CONDITIONED DRUG STORE

Where You Get COURTEOUS SERVICE

... whether it's a drink at the fountain, a gift item, or to have a prescription filled.



SELL YOUR

### TOBACCO

WITH THE LEADERS

NEW

### FARMERS

— AND —

### CAROLINA WAREHOUSE

TABOR CITY, N. C.

### Assured Of Top Market Prices On Every Grade

- Afternoon Sale—Opening Day— August 3rd—New Farmers
- Morning Sale—Aug. 4th—Carolina
- Afternoon Sale—Aug. 5th—New Farmers
- Morning Sale—Aug. 6th—Carolina
- Afternoon Sale—Aug. 9th—New Farmers

- Morning Sale—Aug. 10th—Carolina
- Afternoon Sale—Aug. 31st—New Farmers
- Afternoon Sale—Aug. 11th—New Farmers
- Morning Sale—Aug. 12th—Carolina
- Afternoon Sale—Aug. 13th—New Farmers
- Morning Sale—Aug. 16th—Carolina
- Afternoon Sale—Aug. 17th—New Farmers
- Morning Sale—Aug. 18th—Carolina

- Afternoon Sale—Aug. 19th—New Farmers
- Morning Sale—Aug. 20th—Carolina
- Afternoon Sale—Aug. 23rd—New Farmers
- Morning Sale—Aug. 24th—Carolina
- Afternoon Sale—Aug. 25th—New Farmers
- Morning Sale—Aug. 26th—Carolina
- Afternoon Sale—Aug. 27th—New Farmers
- Morning Sale—Aug. 30th—Carolina

- Morning Sale—Sept. 1st—Carolina
- Afternoon Sale—Sept. 2nd—New Farmers
- Morning Sale—Sept. 3rd—Carolina
- September 6th—LABOR DAY
- Afternoon Sale—Sept. 7th—New Farmers
- Morning Sale—Sept. 8th—Carolina
- Afternoon Sale—Sept. 9th—New Farmers
- Morning Sale—Sept. 10th—Carolina

WE HAVE YOUR INTERESTS AT HEART

### New Farmers and Carolina Warehouses

R. C. COLEMAN, Mgr.

TABOR CITY, N. C.

HARRIETT L. SIKES, Ass't