

### Shalotte THEATRE

SHALLOTTE, N. C.  
First show begins each evening at 7:30 o'clock. First Show Saturday at 6:00. Late Show Saturday at 9:15. Sunday Show at 8:30.

Wed., Thur., Nov. 30, Dec. 1  
"LUST FOR GOLD"  
I. Lupino and Glenn Ford

Fri., - Sat., Dec. 2-3  
"EL PASO"  
J. Payne and Gail Russell

LATE SHOW—Saturday  
And Sunday, Dec. 3-4  
"MY FRIEND IRMA"  
Marie Wilson - John Lund

Mon., - Tues., Dec. 5-6  
"DOOLINS OF OKLAHOMA"  
R. Scott and John Ireland

Wed., - Thurs., Dec. 7-8  
"MR. BELVEDERE GOES TO COLLEGE"  
Clifton Webb and Shirley Temple

### Takes Over New Methodist Charge

Rev. Tracy Varnum, young Methodist preacher of the Varnumtown community near Supply left last week for his new charge in the Elizabeth City District. He has been appointed to the Stumpy Point Charge with four churches. Rev. Mr. Varnum has been pastor of the Dixon Chapel, Piney Grove and Shiloh Methodist churches. He has been in church work four years.

### Southport Man Loses License

Jasper Bellamy Has Beer License Revoked Following Conviction On Charge Of Liquor Violation

Arrested and convicted on charges of possessing whiskey for the purpose of sale, Jasper Bellamy, Southport negro, had his beer license revoked on Nov. 19th by the State A. B. C. board, according to R. L. Bissette, of the board who was here Monday.

Bellamy had several gallons of whiskey hidden in an about his beer parlor, according to the several arresting officers. They produced 21 pint bottles of whiskey and half a gallon of wine as evidence against him when he was tried in Recorder's court. He was given an eight months road sentence, suspended on payment of

a fine of \$100.00 and costs. Mr. Bissette stated in an interview Monday that just as soon as the board was advised of the conviction of the negro of law violations they suspended or took away his beer license. He added that similar action would be taken in the case of all beer parlor operators who do not hew to the law being law abiding or in failure to keep an orderly place.

### Farmers Invited To Demonstration

Tractor Show Will Be Staged Friday Morning at Wilmington And Brunswick Farmers Invited to Attend

The Veterans Agricultural classes in New Hanover county are sponsoring a big tractor show to which all farmers in Brunswick county are invited, the event to be staged at the Bluetenthal Airport in Wilmington, Friday of this week from 10 to 3 o'clock.

Jake Tinga, teacher at the Bolivia school, states that demonstrations will be given in the use of fifty pieces of equipment on various farm tractors, such as Ford, Farmall, John Deere and Massey Harris tractors. In this demonstration the manufacturers are cooperating. The International paper company is sending its giant fire plow to demonstrate the plowing of fire lanes. The event promises to be an

interesting and profitable one to all farmers and tractor owners who may attend. Mr. Tinga says that many farmers in this county are not using their tractors and equipment to the best advantage, because of lack of know-how.

### Speeders Caught On U. S. No. 17

Highway Patrolman Pierce Brought In Warrants On Monday For Several Tourist Caught Traveling Over 70 Miles Per Hour

Bonds and warrants for nineteen speeders were brought in Monday by State Highway Patrolman J. C. Pierce of S. A. 17. The cases were all received too late to be docketed for action at Monday's session of the Recorders

court. Most of the warrants alleged speed of 70 miles per hour and up to 90.

Only cash and travellers checks are acceptable as bond. In this case the operators halted by patrolman Pierce put up an even \$400.00. It is expected that about all will waive appearance and have the fines and costs taken from the bonds at next Monday's session of court.

None of these arrested were residents of Brunswick or adjoining counties it is said. All were northerners enroute to Florida and apparently bent on getting there as quickly as possible.

### VISITED IN SOUTHPORT

Mr. Wesley Glover of Baton Rouge, La., spent the week-end here with Dr. and Mrs. Landis G. Brown. Mr. Glover is head of the Department of Occupational Standards for the State of Louisiana. He is a brother of Mrs. Brown.

### CATHOLIC INFORMATION

#### Preventing Skids With A St. Christopher Medal

More and more danger on the road. More and more deaths on the highway. More and more St. Christopher medals in automobiles.

Medals? What good can they do? Can they put new treads on old tires? Can they tighten brakes that are loose? Can they keep blinding lights from the eye? They can NOT! A medal is inert matter. It has no power in itself. But, listen! On it is the likeness of a saint—a third-century martyr who, tradition tells us, spent much of his earthy time in transporting folks in safety across a turbulent stream—thereby becoming the patron saint of all travelers.

But what use can a third-century saint be to a twentieth-century motorist? No use in his own right, but lots of use to him who believes in the intercession of the saints. For instance: A Catholic steps into his car. His eye lights on a medal which portrays the patron saint of travelers. Being thus reminded, the motorist prays for protection on his journey to one

whom the Church recognizes officially as a saint and whom we therefore know to be near and dear to God.

All prayers are heard. Therefore St. Christopher hears and carries the petition to the throne of Him who loves us. Such intercession from a saint beloved by God is potent. God hears and answers in His own way, which is always the best for our ultimate good.

So you see, a St. Christopher medal in a car can do a lot of good. Indirectly it can stop skids, blowouts, or any other calamity, if one has faith in the prayers of a saint and appreciation of the fact that God can do anything He wants to do. But to him who has no such faith, a St. Christopher medal is of the exact same use as a four-leaf clover, a buck-eye, or a rabbit's foot—no use at all except perhaps to reveal openly a silly superstition. It is anything Catholic, ask a Catholic! For further information write P. O. Box 351, Whiteville, N. C.

### CARD OF THANKS

We wish to express our heartfelt appreciation to our friends for their many acts of kindness and expressions of sympathy during our bereavement in the death of my brother.

Drew Long and Family  
Shalotte, N. C.

### CARD OF THANKS

We wish to express our appreciation of the acts of the many friends in Brunswick county and Wilmington for their help and sympathy shown so generously following the loss of our home and possessions by fire on November 20th.

Bryson Hickman and Family  
Bolivia, N. C.

Read The Want Ads.

## CHRISTMAS GOODS

Let us help you with your Christmas list. We have many items that will be practical to give and good to receive. Make every Christmas dollar do its duty.

**R. GALLOWAY**  
General Merchandise  
SUPPLY, N. C.

## FOR THE HOME

### Electric And Gas Appliances

Westinghouse & Hotpoint Electric Ranges  
Tappan—Magid Chef—Hardwick Gas Ranges  
(These Make Wonderful Christmas Presents)

### Furniture & Furnishings

Bedroom, Living Room & Kitchen Furniture  
Occasional Chairs — Rockers — Rugs — Lamps

### Linoleum Rugs

9 x 12; 12 x 12; 12 x 15

By Leading Manufacturers Of Nation  
Many Other Things To Help Make Your  
Home Convenient & Beautiful

**KINGS ELECTRICAL SALES CO.**  
SHALLOTTE, N. C.

## Intimate

## Christmas Gifts

Always Welcome Lingerie and Hosiery  
gifts for everyone—from teen to granny-age!

Nylon Hosiery

Quilted Robes  
Finest Quality

Chenille Robes  
All Pastel Colors

Silk Negligee  
Lace Trimmed

Bed Jackets  
Tailored and Lace

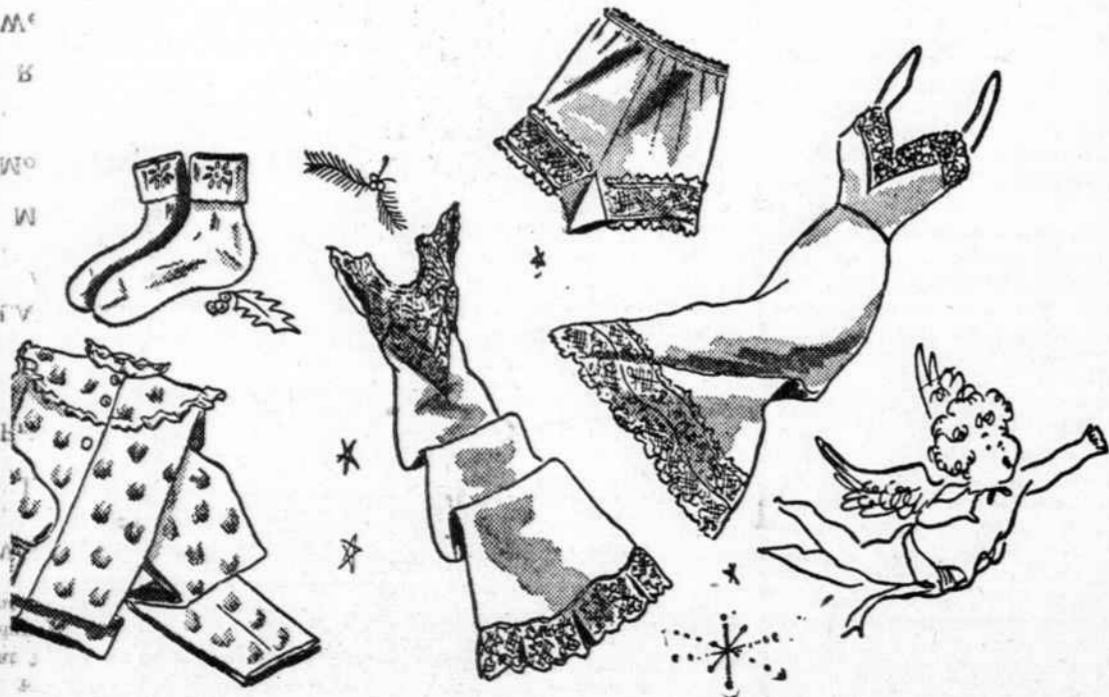
Rayon Panties  
Plain and Fancy Lace Trimmed

Nylon Panties

Rayon Pajamas

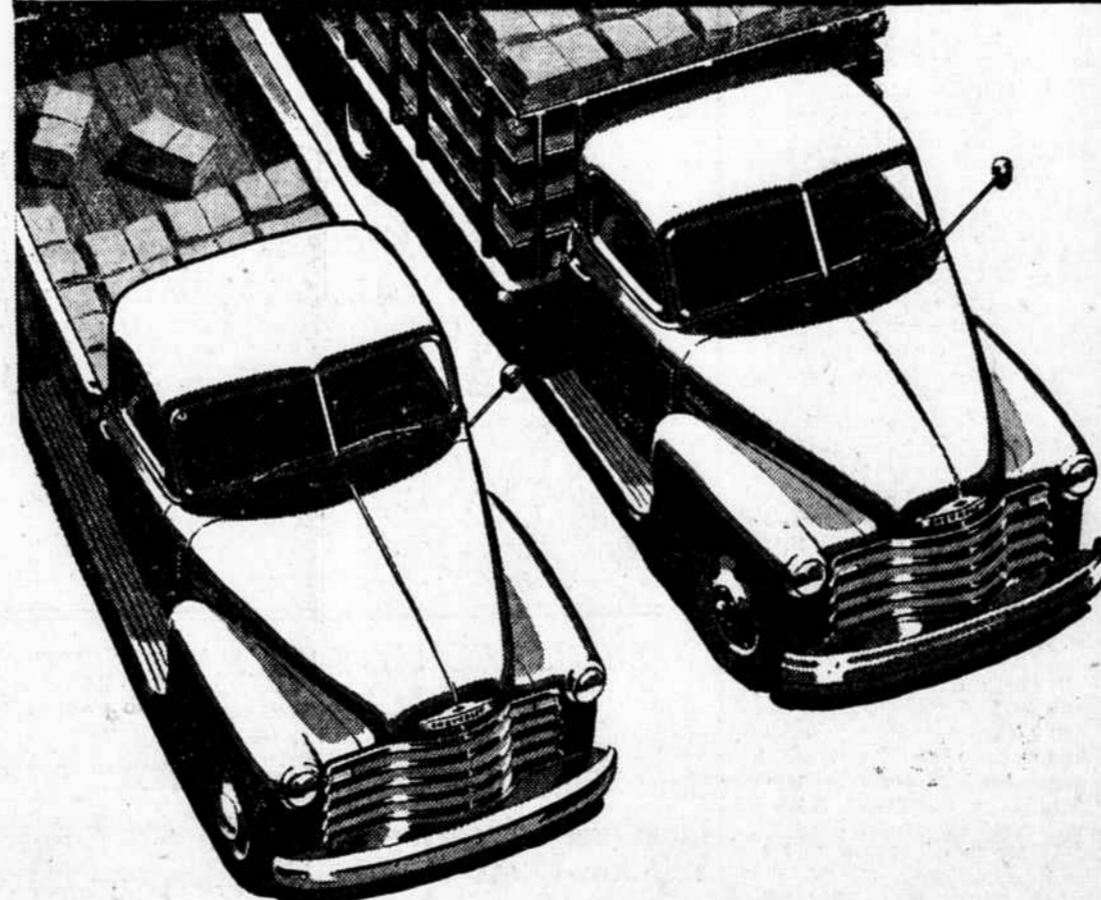
Rayon Slips

Nylon Slips



Look at the Record!

**CHEVROLET ADVANCE-DESIGN TRUCKS**  
**PREFERRED OVER NEXT MAKE**  
**BY MORE THAN 2 TO 1\***



Here is clear-cut endorsement by truck buyers and users as revealed by official registration figures—and what's more, Chevrolet trucks outsell the next two makes combined.\* That's the record—now look at the reasons. Look at Chevrolet's sturdy construction, rugged power with economy, handling ease and convenience. Look at all the extra advantages of Chevrolet trucks and then add the lowest list prices in the industry. Now you know why Chevrolet trucks lead them all! Come in and let us show you and tell you the full story of Chevrolet truck value!

\* Official Registration Figures covering Chevrolet weight class for the ten months, Dec. 1943 - Sept. 1944.



Featuring VALVE-IN-HEAD ENGINES—Greater power per gallon, lower cost per load • DIAPHRAGM SPRING CLUTCH—Smooth engagement • SYNCHRO-MESH TRANSMISSIONS—Quick, smooth shifting • HYPOID REAR AXLES—5 times stronger than spiral bevel type • DOUBLE-ARTICULATED BRAKES—Complete driver control • WIDE-BASE WHEELS—Increased tire mileage • ADVANCE-DESIGN STYLING—With the Cab that "Breathes" • BALL-TYPE STEERING—Easier handling • UNIT-DESIGN BODIES—Precision built

## Shalotte Trading Co.

HOBSON KIRBY, Prop.  
SHALLOTTE, N. C.

**ELMORE MOTOR Co.**  
Bolivia, North Carolina