

RETURNS HOME

Mrs. M. A. Barnett has returned from Plainfield, N. J., and a visit with her daughter, Mrs.

M. H. McHose.

Read The Want Ads



Fine Youngsters

You bet they are Dad, and it's the ambition of your life to get them off to a good start. But what if you're not around?

If you haven't gone over the provisions of your Will recently, regarding your children, do so with the help of your attorney. He will tell you the advantages of appointing the Waccamaw Bank & Trust Co. as Trustee or Executor in your Will.

Your Financial Friend

WACCAMAW BANK AND TRUST COMPANY

MEMBER F.D.I.C.

WHITEVILLE CLARKTON SOUTHPORT

CHADBURN FAIRMONT KENANSVILLE

TABOR CITY SHALLOTTE ROSE HILL

SOIL CONSERVATION NOTES

H. F. KIZER Soil Conservation Service

Preliminary surveys regarding farm drainage were made during the past week for Roland Simmons, postmaster at Ash, and a large farmer of that community. Mr. Simmons is carrying out a soil and water conservation plan prepared by the Lower Cape Fear Soil Conservation District.

To properly plan a drainage system for an individual field, or fields, the fall of the land has to be checked from the rain outlet

up to the area to be drained. Such a procedure was necessary to properly advise Mr. Simmons on the best drainage system for one of his water-logged fields.

Similar surveys were recently made by technicians assigned to the district for B. M. McKeithan of Bolivia and Kenny Lewis and R. G. Fitzgerald of the Winna-bow section.

"There is only one covey of quail on my farm now where there used to be at least five coveys fifteen years ago," said Wrent Mintz, a farmer of the Freeland community a few days ago. This statement was made to me as Mr. Mintz and I were going over his farm making a soil and water conservation plan in cooperation with the Lower Cape Fear Soil Conservation District.

Shalotte THEATRE SHALLOTTE, N. C.

First show begins each evening at 7:30 o'clock. First Show Saturday at 4:30. Late Show Saturday at 9:15. Sunday Show at 8:00.

Thurs., - Fri., March 9-10 "ABBOTT & COSTELLO MEET THE KILLERS" Boris Karloff

Saturday, March 11—"ROUGHSHOD" R. Stearling - G. Grahame

LATE SHOW "YES, SIR, THAT'S MY BABY" Gloria DeHaven and Donald O'Connor

Sun. - Mon., March 12-13 "SITTING PRETTY" Clifton Webb

Tues. - Wed., March 14-15 "JUDGE STEPS OUT" Ann Southern and A. Knox

Brunswick Boy On Maneuvers

Johnnie W. Babson, fireman, USN, of Freeland, is aboard the attack transport USS Okanagan participating in the joint Army, Navy and Air Force realistic war exercises being conducted in the Caribbean area which will include a mock assault and seizure of the Island of Vieques.

Portex, or Puerto Rican Exercises, the largest peacetime maneuvers ever to be held in this hemisphere, will afford combat experience for nearly 80,000 men of the armed forces and will include the menace to the Fleet by submarines and attacking aircraft both land and carrier-based.

200 Expected To Attend Forestry Field Day Here

Timberland Owners, Lumber Manufacturers and Others To Make Tour in Columbus And Brunswick

Approximately 200 timberland owners, lumber manufacturers and others from Brunswick and Columbus Counties are expected to attend a Forestry Field Day here Wednesday, March 8, according to Harold E. Blanchard, chairman of the Columbus County Forestry Council.

The executive committee of the recently-formed council met Wednesday night to perfect plans for the event which is sponsored by the Waccamaw Bank and Trust Company and the First National Bank of Whiteville.

Irvin B. Tucker, Jr. Congress Nominee

Whiteville Attorney Will Carry Republican Banner In November Election Against Democratic Candidate; Maultsby Is Re-elected Congressional District Chairman

Irvin B. Tucker, Jr., young campaign. Whiteville attorney, was selected Friday to carry the Republican banner in the Seventh District congressional race against the Democratic incumbent, F. Ertel Caryle of Lumberton.

A son of Whiteville's late distinguished barrister, Irvin B. Tucker, Sr., who was a Republican nominee for Lieutenant Governor of North Carolina in 1924, a U. S. District Attorney, and later member of the U. S. Parole Commission, young Tucker was nominated at the biennial district convention in Elizabethtown.

Josiah A. Maultsby, Sr. of Whiteville, district GOP chairman, presided at the opening of the meeting but named J. O. West of Dunn as chairman.

Accepting the nomination, Nominee Tucker pledged himself to an intensive and aggressive

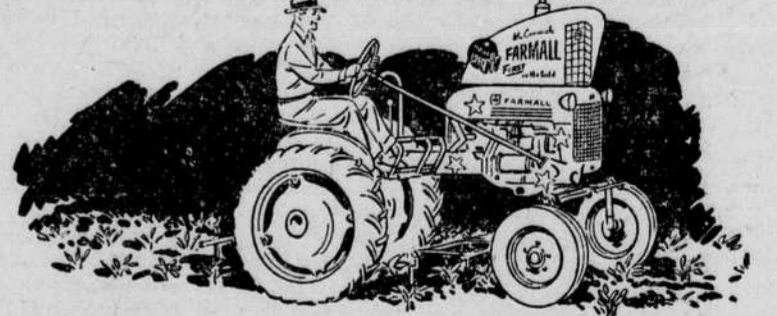
which he warned that America is now traveling down a socialistic road which leads to chaos and eventual destruction of the Democratic processes of government.

"It looks like we could take a lesson from Great Britain," said West, "But unfortunately the powers that be in Washington are more concerned with entrenching themselves in office

through a program of government doles and handouts than they are in the permanent well-fare and security of America, programs of the Truman socialistic regime."

Farmers' cash receipts from sheep and lambs dropped 20 per cent from 1948 to 1949.

IT'S YOUR TURN TO TRY THIS FARMALL CUB.



Ask for It now! Try It Yourself! Call us Today for a Free, on-your-Own - Farm Demonstration!

FARMALL - FIRST IN THE FIELD

Marks Machinery Co. Wilmington, N. C.

Marks Truck & Tractor Co.

WHITEVILLE, N. C. PHONE 11 "Your International Harvester Dealer"

WHY NOTED OPERA STAR NADINE CONNER CHANGED TO CAMELS...

"WHEN I SMOKE, I HAVE TO THINK OF MY VOICE. I MADE THE CAMEL 30-DAY MILDNESS TEST. IT PROVED TO ME THAT CAMELS AGREE WITH MY THROAT. THEY'RE MILD - THEY TASTE FINE!"

In a coast-to-coast test of hundreds of men and women who smoked Camels - and only Camels - for 30 days, noted throat specialists, making weekly examinations, reported

Not one single case of throat irritation due to smoking CAMELS



THE PEOPLE'S CANDIDATE

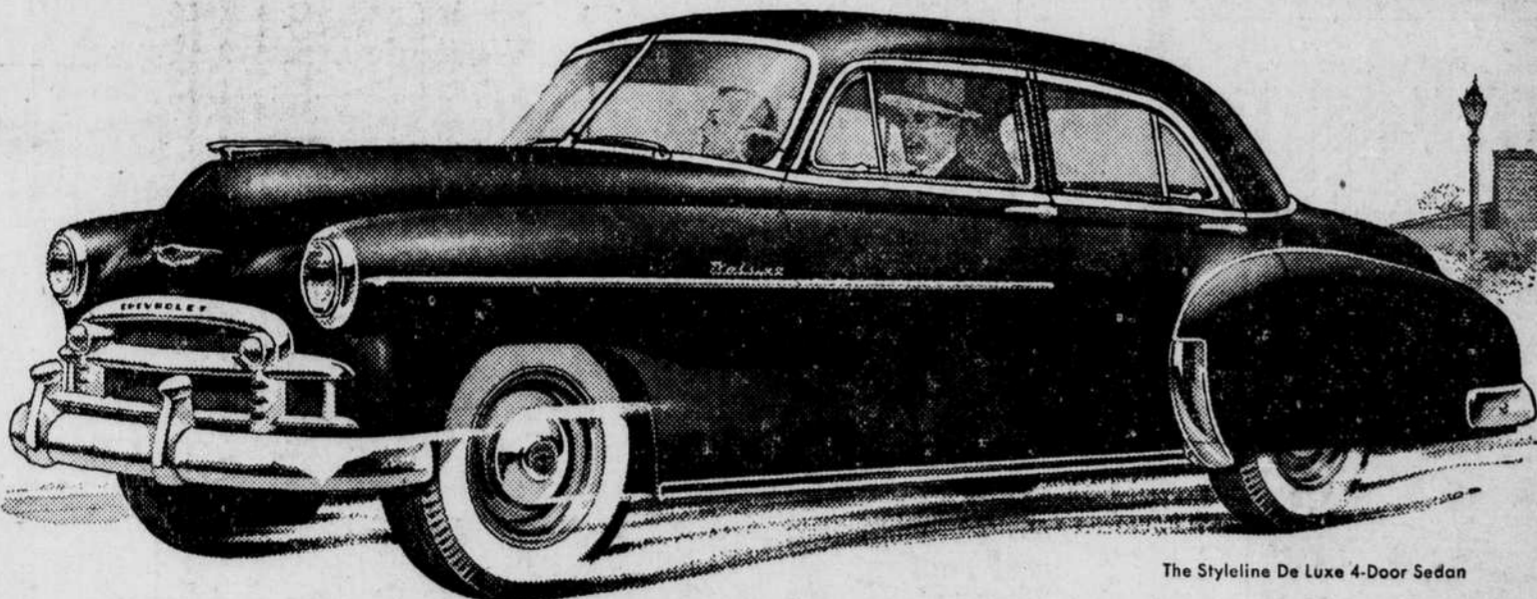
I wish to announce that I am a candidate for the Democratic Nomination for State Senate, subject to the will of the voters in the May Primary Election.

I have had the benefit of the experience gained from serving two terms as Representative of the Lower House of the North Carolina General Assembly. I deeply appreciate the honor given me on these two occasions by my fellow citizens of Brunswick county, and if nominated and elected I pledge myself to work for progress and improvement for all of our people.

I shall greatly appreciate your vote and active support of my candidacy.

ODELL WILLIAMSON Candidate For State Senate

Here's the best and most beautiful car at lowest cost



The Styleline De Luxe 4-Door Sedan

CHEVROLET

FIRST...and Finest...at Lowest Cost!

Chevrolet is the only car that brings you these outstanding features at lowest prices... NEW STYLE-STAR BODIES BY FISHER • NEW TWO-TONE FISHER INTERIORS • CENTER-POINT STEERING • CURVED WINDSHIELD with PANORAMIC VISIBILITY • LONGEST, HEAVIEST LOW-PRICED CAR • CERTI-SAFE HYDRAULIC BRAKES with Dubl-Life rivet-less linings • EXTRA-ECONOMICAL TO OWN-OPERATE-MAINTAIN.

POWERGLIDE AUTOMATIC TRANSMISSION

Combination of Powerglide Transmission and 105-h.p. engine optional on De Luxe models at extra cost.

This car alone provides the trim and tailored beauty of Body by Fisher, at lowest cost! This car alone offers a choice of the finest in automatic or standard drives, at lowest cost! This car alone gives all the advantages of Valve-in-Head Engine performance—including the most powerful engine in its field—at lowest cost!

And so it goes through every phase of motor car value; for only Chevrolet offers so many features of highest-priced automobiles at the lowest prices!

Come in and see the Chevrolet for '50—first and finest at lowest cost!

Elmore Motor Company BOLIVIA, N. C.

IT'S THE NEW NORGE BIG 8-CUBIC-FOOT REFRIGERATOR

with EXCLUSIVE Self-D-Froster\*

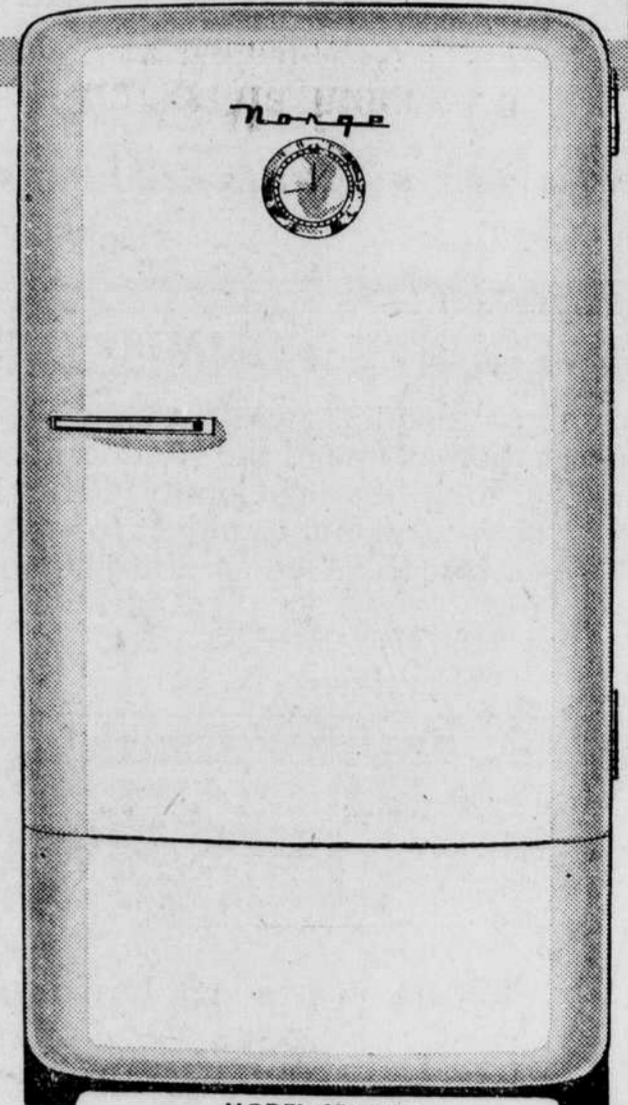
AT A NEW LOW PRICE

\$269.95

104 WEEKS TO PAY!

LOADED WITH FEATURES

- Automatic Defrosting
Rollator Coldmaker
Meat-Storage Coldpack
Wide Side Freezer—27-lb. capacity
Fold-Away Shelf
Case-Plus Bottle Storage
14 Sq. Ft. of Shelf Area
4 Easy-Out Ice Trays
Sliding Hydrovoir
5-Year Protection Plan



MODEL SR-849

\*Exclusive Self-D-Froster System puts an end to manual defrosting

Robinson's

Southport, N. C.

SEE NORGE BEFORE YOU BUY