

SOIL CONSERVATION NOTES

H. F. KIZER
Soil Conservation Service

These men got together, talked over their problem, and then called on the technicians assigned to the Lower Cape Fear Soil Conservation District to assist them in making a preliminary drainage survey. They provided necessary stakes and shrubbed out the paths necessary for such a survey. The technicians made the survey, computed it, and supplied the information to them.

"Copies of the 1949 District Supervisors Annual Report for the Lower Cape Fear Soil Conservation District are now available," says J. D. Bellamy Jr.,

chairman of the Brunswick County board of Soil Conservation Supervisors. A copy of this report may be secured from the work unit office at Supply or from any of the county supervisors. County supervisors, other than Mr. Bellamy, are Corbett Coleman of Ash and Gilbert Reid of Winnabow.

Southport Man Has Good Beans

Observers Say That Joe Cochran Has Best Bean Patch In East Carolina; Planting Bell Peppers

Joe Cochran of Southport has the best five-acre field of snap beans, not just in Brunswick county but in all of North Carolina, according to Everett H. Sheppard, Shiloh, N. J., and Southport tomato plant grower. The beans are now about six inches tall, and growing almost as fast as those that Jack grew.

Working with Sheppard, Joe planted the five acres on the old Scabrozi farm, half a mile from the Southport City limits. These beans came up and grew. They have found the Southport climate just to their liking.

Right near his beans Cochran is now planting five acres in bell peppers. His plants were grown here for New Jersey farmers, but they grew so fast they had to be set out now. They are about ten inches tall and ready to bloom already. The New Jersey climate will not be suited for them to be planted there until the first of May, so Cochran and the Sheppards are going to see how bell peppers will grow in this neck of North Carolina.

The two Sheppards, Everett and Irving, are also planting 10 acres in bell peppers on the Everett H. Sheppard tomato plant farm out on the river road. Between those two and Cochran they are making quite a demonstration in growing bell peppers in Brunswick this year.

"Can't help it," said Everett, "those plants are so big they have to be set out somewhere right away. If we took them to



Beans Can Be Sown in Pairs, Properly Spaced, to Insure a Good Stand.

You Can't Be Too Careful in Sowing Garden Seeds

While seed sowing is not a precision job—especially when nature does it—gardeners soon learn that much can be saved if it is done with some skill and judgment.

If sown too thinly, there may be vacant spaces in the row, caused by local mishaps such as drowning, or washing out, or an attack of fungus. If sown too thickly, seedlings will come up crowded, and there will be extra work in thinning out the excess plants.

Some seeds are often sown so thickly that ninety per cent of the plants must be sacrificed, in order to give the remainder room enough to mature. This is waste of both seed and labor. Then what will serve as a guide to follow?

As a general rule, not more than fifteen seeds to an inch should be needed, when seed is of standard germination, and the soil is fairly porous. Start with that rule, and then make these exceptions:

If seed is of sub-standard germination, or known to be old, double that rate. Carrot seedlings are feeble, and often have difficulty breaking through the soil if it is at all inclined to crust. Use twice as much carrot seed if you have doubts about your soil being porous enough. In the case of large seeds, such as beet, Swiss chard, and peas, which can be spaced precisely, sow them an inch apart.

Bush beans usually are allowed to grow four inches apart in the row. If you wish to avoid vacant



Let Seed Drop From the Fingers, Evenly Spaced.

spaces, a good way is to sow beans in pairs, spaced four inches apart. Seldom will both seeds in a pair fail to grow. If both grow, one can easily be pulled up, or let them both develop, since twin plants will do as well as singles.

The surest way to sow small seeds is to take a few in the hand, and let them fall through the fingers into the drill which has been prepared. Get close to the ground, and with a little practice you can quickly acquire control so that the seeds will be evenly distributed, each sufficiently distant from the next to prevent entanglement.

Bolivia Teams Enjoy Banquet

Members Of Parent-Teacher Association And Other Patrons Of Community Sponsored Enjoyable Occasion

On Tuesday, April 4, the Bolivia Girls and boys basketball teams were given a banquet sponsored by the Bolivia Parent Teacher Association members and the community.

J. T. Denning, Superintendent of Brunswick County Schools, gave a short talk on sportsmanship, which was enjoyed very much by all.

First on the program was recognition of the county board of education and the local board. The rest of the program consisted of some songs by the local group, including "America" and the school song.

The invocation was given by principal F. O. Page. The captain of the girls team, Albert Skipper, gave a speech on cooperation of the coach and girls. Yells were given by the cheerleaders, after which a talk on the cooperation of the team was given by Guy Willetts, captain of the boys' team. This was followed by a comical number "After The Ball", which was presented by the group.

Some recording of the Glee Club were enjoyed while dinner

was being served. Different members of the teams then gave some very interesting stunts, showing how certain members of the team acted while playing basketball. Edith Purvis in the absence of Earnest Wolfe, gave a short talk on sportsmanship. The program ended with two songs, "Good Night Ladies" and "Auld Langs Syne".

The meal consisted of fried chicken, fresh butter beans, tomatoes, lettuce, butter, rolls, potatoes chips and ice tea. For desert there was a tempting piece of apple pie with ice cream. The meal was prepared and served by Mrs. Daisy Mercer, Mrs. Mildred Hawes and Mrs. Albright.

March Beer Tax Totals \$2299,071.97

RALEIGH, April 1—Beer taxes collected by the State in March totaled \$229,071.97. This is an increase of \$14,998.33 over March of 1949, the State Department of Revenue reported today.

The total collections for the first 6 months of the 1949-1950 tax year total \$1,674,265.20. Half the excise tax is distributed annually to counties and municipalities which license beer sales.

The tax totals do not include the State sales tax on beer or the license taxes levied by Federal and local governments.

Read The Want Ads.

GOOD GULF

Gasoline · Motor Oil · Lubricants
Get Good Gulf & Get Better Service

ENNIS LONG SERVICE STATION

U. S. No. 17 — Supply, N. C.

CANDIDATE FOR SHERIFF

I continue to find that most of our people are more interested in the prospects for honest, efficient law enforcement than they are in high pressure and fair promises. Every day I have folks tell me they are going to vote for me because they have confidence in me and the kind of sheriff I will make. I deeply appreciate these expressions of trust, and I will never do anything to let them down.

ED V. LEONARD

State Board Will Study SBI Probe

RALEIGH—The state Board of Elections will meet here next Thursday to study an SBI report of its probe into alleged election irregularities.

Elections board chairman Charles M. Britt, who announced the meeting, said the board would meet for the purpose of discussing matters pertaining to election boards in different counties.

Asked if the SBI report would be discussed, Britt replied "that will be part of it."

Adult Reaction

The Sunday School teacher had just finished telling her class about the beauties of heaven.

"Now," she said, "how many of you want to go to heaven?"

Everyone in the class raised his hand except a small boy in the last row.

"Why don't you want to go to heaven, Robert?" the teacher asked.

"Gee willikens," the boy said, his face working indecisively. "I've got two mink traps set."

AMUZU THEATRE SOUTHPORT, N. C.

Admission—14c and 30c
EFFECTIVE APRIL 1st
Two Shows Nightly—
1st Show, 7:30—Except Saturday
3 Shows Starting at 7:00 P. M.

Thurs., Fri., April 13-14
"CHICAGO DEADLINE"
Alan Ladd · Donna Reed
ALSO—Cartoon

Saturday, April 15
"INDIAN AGENT"
Tim Holt, Noah Beery, Jr.
ALSO—Comedy

Mon., Tues., April 17-18
"WHITE HEAT"
James Cagney and Virginia Mayo
ALSO—Selected Short

Wednesday, April 19
"TROUBLE IN SUNDOWN"
Geo. O'Brien and Rosalind Keith
ALSO—Cartoon

COMING
"DANCING IN THE DARK"
Wm. Powell · Betsy Drake

Candidate For COUNTY COMMISSIONER

I wish to announce that I am a candidate for the Republican nomination for member of the Board of County Commissioners, subject to the will of the voters in the Primary Election on May 27. I will appreciate your vote and influence in behalf of my candidacy.

E. VANCE GORE

TOBACCO BARN FLUES

Check Your Tobacco Barn Flues. We Can Take Care Of Your Repair And Replacement Needs If You Will Place Your Order Now. Don't Make The Mistake Of Waiting Too Late.



Tobacco Dusts And Sprays

Don't Surrender Your 1950 Tobacco Crop To Insect Pests.

SEED — SEED

We Can Take Care Of All Your Farm And Garden Seed Requirements. Remember, You Must Plant Now If You Hope To Harvest This Summer Or Fall. Don't Delay, Come In Today.

FOR SPRING PAINTING

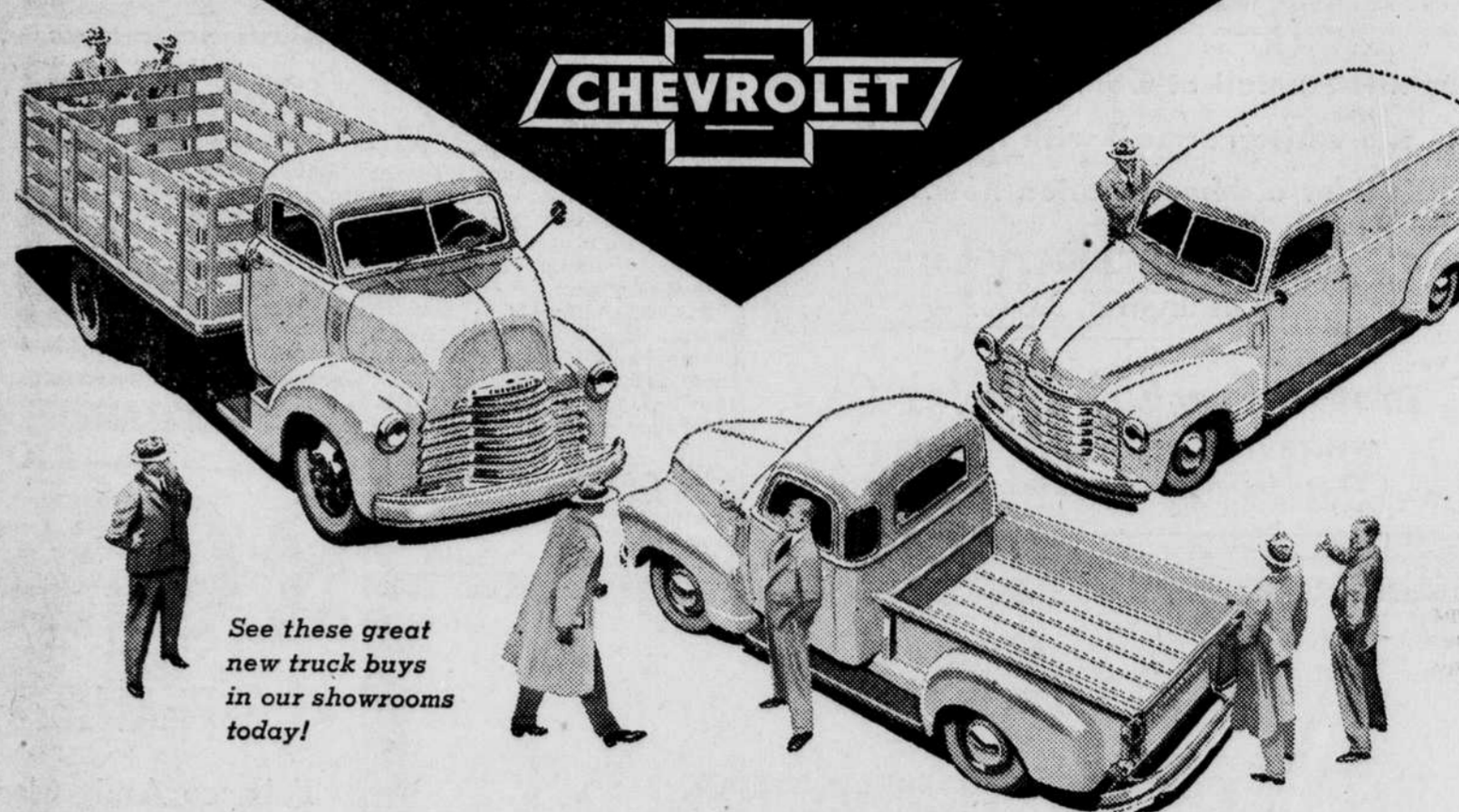
GLEEM Paint, Inside & Outside.

Kirby Hardware

SHALLOTTE, N. C.

Here Are America's Most Outstanding Truck Values

NEW PL TRUCKS



Performance Leaders Most Powerful Chevrolet Trucks Ever Built!
Payload Leaders Cost Less To Operate Per Ton Per Mile!
Popularity Leaders Preferred by Far Over All Other Trucks!
Price Leaders Now at New Lower Prices!

FAR AHEAD with all these PLUS FEATURES • TWO GREAT VALVE-IN-HEAD ENGINES: the New 105-h.p. Load-Master and the Improved 92-h.p. Thrift-Master • THE NEW POWER-JET CARBURETOR • DIAPHRAGM SPRING CLUTCH • SYNCHRO-MESH TRANSMISSIONS • HYPOID REAR AXLES • DOUBLE-ARTICULATED BRAKES • WIDE-BASE WHEELS • ADVANCE-DESIGN STYLING • BALL-TYPE STEERING • UNIT-DESIGN BODIES

Elmore Motor Company

BOLIVIA, N. C.