

Soil Conservation District Notes

H. F. KIZER
Soil Conservation Service

Charles Taylor, young wide-awake farmer of the Winnabow community, realizes if he is to have good land to farm later on, that he must hold that which he now has. "I have a field that the topsoil has been gradually washing away, especially around the edges where it breaks off into the woods", Taylor said to Soil Conservation Service technicians assigned to the Lower Cape Fear Soil Conservation District when they were preparing a soil and water conservation plan for him several months ago.

When this field was examined, it was found that over 50-percent of the topsoil from several irregular spots around the edge of the field was gone. It was also found that due to the irregular slopes of the land, a satisfactory terrace system could not be designed; thus, retirement to perennial erosion resisting plants was recommended to the farmer and he accepted it. The plant recom-

mended was the deep-rooted hay producer, sericea lespedeza. Mr. Taylor has just completed preparing, fertilizing, and seeding approximately 3 acres of sericea, and has squared up his field, taking up all the little irregular nooks and corners, and galled areas.

"My big field will now be easier to work with the tractor. I have some additional hay on the way for my cattle, and I have cut my erosion to a minimum", Taylor added as he drove away from the seeding operation.

A dragline has started operating on a group drainage job near Longwood. Several farmers in this community are cooperating in this endeavor. Soil Conservation Service technicians are assisting them in the engineering phases of the work.

WEEKEND VISITORS

Jack Swan, student at The Citadel, and Mr. and Mrs. Harry Lindbergh of Charleston, S. C., spent the week-end here with Mrs. John G. Swan.

Southport Wins Williams Game

Second Victory Over Columbus Nine Advances Local Team In Championship Race

WILLIAMS — Southport's diamonders won the right to advance to the finals of the District 2, Class B playoffs here on Friday afternoon as they came from behind to outscore Williams High's Aggies, 12-9, in a loosely-played game.

It was the second straight win for the Porters over the Ags, who had dropped a 15-5 decision, in Southport, last week-end. By winning the past Friday, Southport gained the unquestionable right to play the winner of the Upper District 2 play. Teams composing this district are Wallace Chinquapin, Beulahville, and Warsaw.

Unless the weather interferes, Wallace and Southport will play this afternoon on the local diamond. However, a heavy shower fell this morning, and with the weather generally inclement it appeared likely that a postponement might occur.

Southport had a 3-run third inning in the final game but saw Williams come back with an identical one in the 4th. The two foes finally were locked in an 8-all tie at the close of the sixth frame.

Little Red Ward, who had let two fly balls fall for Williams singles when he lost them in the sun, became the Southport hero

POTATO PROGRAM

Any farmer operating a farm in Brunswick county who planted 2.9 acres Irish Potatoes or less in 1950 which he expects to market may apply at the County PMA Office on or before May 12 for a "Certificate of Eligibility to Producers Under the 1950 Potato Price Support Program."

Conference To Meet Wednesday

Methodists Of Wilmington District Will Convene At Church Near Fairmont On May 10

The annual meeting of the Wilmington District Conference will convene at Barnesville Methodist Church Wednesday morning, May 10th, at 10 o'clock. The delegates from Trinity Methodist Church of Southport are E. C. Blake and Capt. C. N. Swan.

Others who are members of the conference are J. T. Denning, Church School Superintendent; Mrs. E. H. Arrington, president; W. S. C. S., J. W. Ruark, charge lay leader. In addition, all others who can do so will find it a very interesting occasion. The conference will be held in Bethesda Church at Barnesville just a few miles from Fairmont. The most direct way to the conference will be by Whiteville, Fairmont and then on to Barnesville. Next to the annual conference, this general gathering is of next greatest importance. Reports from pastors and from the field at large in the district will be made. The occasion of the noon day meal on the grounds is always outstanding as are the important events of the conference.

in the 8th when the Brunswick invaders scored the winning runs. Spencer was safe on Elbert Long's bobble at short. Tommy Bowmer lived on Sammy Gore's error. Doug Watts bunted and Fisher threw to third, forcing Spencer. Red Ward then belted a clothes-line single to center to count Bowmer and Watts with the victory margin. However, the Porters were not through as Hickman doubled Ward in with the third run of the inning. Williams added one in their half of the 8th and Southport came back to ditto in the 9th and the scoring-books were closed.

Billy McDowell relieved Gene

Shalotte THEATRE

SHALLOTTE, N. C.

First show begins each evening at 8:00 o'clock. First Show Saturday at 4:30. Late Show Saturday at 9:15. Sunday Show at 8:00.

Thurs., -Fri., March 4-5
"WHEN WILLIE COMES MARCHING HOME"

Saturday, May 6
"TEXAS"

LATE SHOW—
"STORMY WEATHER"
Bill Robinson and Lena Horne

Sun., - Mon., May 7-8
"HASTY HEART"
Ronald Regan and Patricia Neal

Tues., - Wed., May 9 - 10
"TALL IN THE SADDLE"

Russ, who started for the victors, in the 7th and received credit for the pitching triumph. Jerry Stephens started for Williams but was replaced by J. T. Fisher in the 4th. The latter was charged with the loss.

Leading the hit-parade for Williams was Roland McPherson with a 3 for 4 average. Andy Anderson belted a double and triple in 4 trips. For the winners it was Gene Russ with a double and two singles in 5 trips and Spencer with 2 for 4, including a two-bagger.

Bolivia School To Give Award

Bolivia Will Participate In Babe Ruth Sportsmanship Awards; Presentation To Be Made At Commencement

Bolivia high school has been selected to participate in and to present the Babe Ruth sportsmanship award; sponsored by the Babe Ruth Memorial Foundation.

This award was created with the hope of enlisting greater enthusiasm for good sportsmanship throughout the secondary school system in the United States. The awards typify the spirit of fair play of Babe Ruth and his benevolent and constant interest in the youth of America. They are to

perpetuate the highest quality of sportsmanship and fair play in the school, on the playing fields and in the home.

The award consist of a permanent plaque which is to be displayed in the school. There is a metal strip on which the names of the individual medal winners will be engraved. On the face of the individual medal is an engraving of Babe Ruth in

batting stance, which is familiar to all ball fans, and the name of the award. On the reverse is engraved the purpose of the award and a space for the name of the winner of the award to be engraved.

These two medals will be presented on graduation night, May 22. The recipients will be selected from the boys and girls of Bolivia high school.

NEW TOURIST COURT

Mr. and Mrs. W. D. Lewis are building a very attractive tourist court on Route 17, near the junction with 74 and 76. In addition to trailer parking space the court will have 16 rooms and a model restaurant. The couple were formerly operators of the cafe at Bolivia.

FOR COUNTY COMMISSIONER

As a candidate for nomination to the board of county commissioners on the Republican ticket in the May 27 Primary election, I will appreciate the vote and support of all good citizens.

ISSAC E. REYNOLDS

Democrat Convention

2:30 P. M.

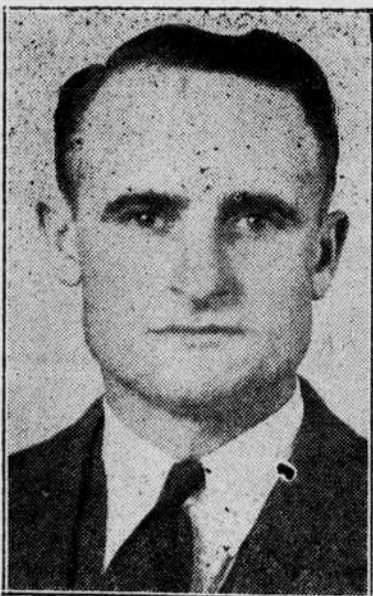
Sat. May 6th.

SHALLOTTE

High School

An Invitation Is Extended To All Brunswick County Citizens, Regardless Of Party Affiliation, To Attend This Meeting. Candidates Will Have An Opportunity To Speak.

To All Good Citizens:



Well, Folks. There's no use for me to make you a lot of promises about what I'll do for you if you nominate and elect me to serve again as Judge of Recorder's court.

If you break the law and come before me I will have no other choice than to mete out punishment as prescribed by law.

This I shall do without fear or favor, and that is as fair as I can be in asking for your continued vote and support in the Primary Election on May 27th.

W. J. McLamb

Candidate For Judge Of Recorder's Court



Etchison

Straw Hats

\$1.89 — \$4.25

Genuine Panama

Mintz & Co.

HARRY L. MINTZ, JR., Mgr.
Supply, N. C.

Odell Williamson

— "THE PEOPLE'S CANDIDATE" —

For State Senate

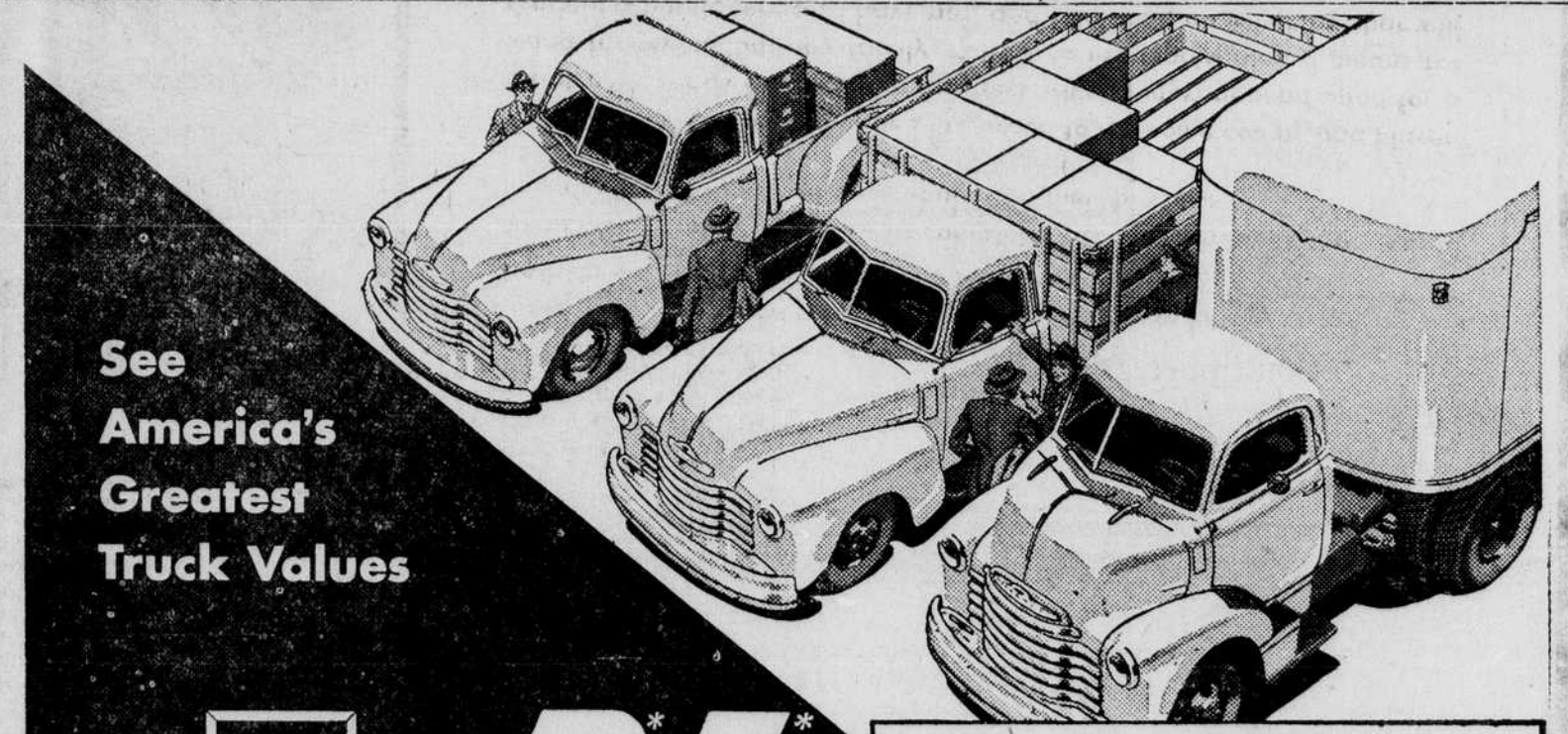
In my race for the Democratic nomination for the State Senate I want the support of every good citizen. However, I am not basing my campaign upon a mass of promises which I know from experience I will be unable to fulfill.

As a member of the past two sessions of the North Carolina General Assembly I supported legislation and gave my support and influence to projects which would be to the interest of the people of Brunswick county. The years since the end of the war have been a period of progress and improvement, and my record both as a county official and as a private

citizen has shown me to be in complete accord with steps that would improve the condition of our people and their business.

When World War II ended I returned to my home county and placed all of my savings at stake in a business which I must depend upon for a living for myself and my family. Politics to me represented a means for rendering public service. I have not, and I will not, do anything that will undermine the confidence of the people in me nor in the manner in which I conduct my private business nor my public duties.

For this reason I have steered clear of promises, and must tell you now as I have told you before; Nominate and elect me and I pledge myself to serve the best interest of our county and its citizens.



See America's Greatest Truck Values

CHEVROLET **P.L.**

PAYLOAD LEADERS

Cost less to operate per ton per mile!

ADVANCE-DESIGN TRUCKS

Right from the start, you can figure on more payloads because Chevrolet trucks take less time on the job . . . cost less to keep up. They reduce total trip time with extra high pulling power over a wide range of usable road speeds. Advance-Design construction saves you money on repairs. It all boils down to this: You can depend on Chevrolet trucks to deliver the goods at low cost per ton per mile. Stop in and see these new P-L trucks now on display.

See these great new truck buys in our showrooms today!

FAR AHEAD WITH THESE PLUS FEATURES

- TWO GREAT VALVE-IN-HEAD ENGINES: the New 105-h.p. Load-Master and the Improved 92-h.p. Thrift-Master
- THE NEW POWER-JET CARBURETOR
- DIAPHRAGM SPRING CLUTCH
- SYNCHRO-MESH TRANSMISSIONS
- HYPOID REAR AXLES
- DOUBLE-ARTICULATED BRAKES
- WIDE-BASE WHEELS
- ADVANCE-DESIGN STYLING
- BALL-TYPE STEERING
- UNIT-DESIGN BODIES

Performance Leaders
Most Powerful Chevrolet Trucks Ever Built!

Popularity Leaders
Preferred By Far Over All Other Trucks!

Price Leaders
First For All-Around Savings!

Elmore Motor Company
BOLIVIA, N. C.