

# THE STATE PORT PILOT

A Good Newspaper In A Good Community

The Pilot Covers  
Brunswick County

Most of The News  
All The Time

VOL. NO. SIXTEEN NO. 44

6-PAGES TODAY

Southport, N. C., Wednesday, December 6, 1950

PUBLISHED EVERY WEDNESDAY \$1.50 PER YEAR

## Polling Places Established In Farmer Election

PMA Elections Will Be Held In Brunswick County Next Thursday, December 14, With Peanut Referendum Also In Progress

### FARMERS GIVEN VOICE IN PROGRAM

Duty Of All Farmers To Actively Participate In Voting Says S. L. Purvis Chairman PMA Committee

S. L. Purvis, chairman of the Brunswick county PMA committee, today issued a final call to all farmers of the county who are eligible to vote in the PMA farmer-committee elections next Thursday, December 14.

"A voice in the selection of committeemen to administer the various farm programs under PMA is a vital right under our system of free government. It is a privilege that should not be neglected," Mr. Purvis said.

Polls will be open from 9 a. m. to 6 p. m. Voting places are as follows:

Lockwoods Folly, J. E. Kirby's Store; North west, Applewhite's Store; Town Creek, Winnabow-Henry's Store; Smithville, Midway Filling Station; Shallotte, Grissetown—B. A. Russ Store; Waccamaw, Lonnie Evans Store.

"No Brunswick county farmer who is eligible to vote should let that time pass without voting," says the chairman. "The three farmers who will serve on the local community committee and the delegate to the county convention from that community should be the choice of the majority of eligible voters in the community."

Eligible voters are any owners, operators, tenants or sharecroppers on a farm that is participating this year in any program administered by the county and community PMA committees.

Mr. Purvis said he is issuing this final call to farmers to vote in the PMA committee elections because he believes that the elected committee system of administering farm programs is vital to the welfare of agriculture in this county and that farmers should not endanger the system by failure to vote.

He explains that in voting a farmer may want to re-elect the same committeemen who are serving now or he may want other farmers to serve on the committee. "Whichever way it is, he should express himself by voting his choice. Only by voting can a democracy be made to work."

The county office of the Production and Marketing Administration has designated the same polling places for the grower-referendum on peanut marketing quotas to be held on the same day.

The office points out that peanut growers will be expected to vote in person in the community in which their farm is located, but that arrangements have been made for casting absentee ballots if an eligible voter will not be able to cast his vote in person. Such absentee ballots should be requested immediately from the county PMA office in Supply.

Referendum committees of three farmers each are being appointed for each community polling place, Mr. Purvis explains.

Continued On Page Four

## Brief News Flashes

### LIONS TO MEET

The Southport Lions Club will meet tomorrow (Thursday) at 1 o'clock in the Community Building.

### JUNIOR PLAY

Members of the junior class of Southport high school will present their play, "Demons In The Dark", a three-act mystery, Friday evening at 8 o'clock.

### CHRISTMAS DANCE

Members of the Shallotte Lions Club will sponsor a dance Saturday night at the Legion Hut, the proceeds to go for the annual Christmas party.

### PASSES EXAMINATION

Miss Ruby Jean Bennett, daughter of Clerk of Court and Mrs. Sam T. Bennett, was one of North Carolina nurses who passed the State Board examination in Raleigh last week. Miss Bennett is a recent graduate of the Robeson County Memorial Hospital, in Lumberton. She is now employed there in the department of surgery.

## Shallotte Man Decorated



**HONORED**—Pfc. Raymond J. Caison, son of Mr. and Mrs. Willie H. Caison of Shallotte, is shown as he receives the Purple Heart Award from Capt. W. F. James, Medical Corps, USN. Caison was awarded the medal for wounds received in Seoul, Korea.—(Official U. S. Navy Photo.)

## Committee Launches Drive For Gymnasium

The Rev. M. H. Baker Is Named To Head Community Effort To Raise Necessary Funds For Construction

\$10,000. SET AS GOAL FOR UNDERTAKING

Only Possibility For Being Able To Use Building During This Season Is To Raise Money Now And Build Immediately

Rev. H. M. Baker has been asked to head a community drive for ten thousand dollars, the amount needed to supplement state funds already allocated for the building of a gym in Southport. If this amount can be raised in the Southport school district within the next two or three weeks it will be possible to build a gym that can be used for tournament play next spring.

Following a mass meeting at the court house the local minister has set about organizing a committee to collaborate with him in this undertaking. Realizing that many citizens believed the additional funds could be secured from the State, the first efforts of the committee were directed to exploring the possibility of additional help from the State of North Carolina. In this effort the committee had the valuable interest and help of the County Superintendent J. T. Denning, Chancellor J. W. Harrelson of State College and Baxter Durham of Raleigh. The matter was presented to Dr. Clyde Erwin, State Superintendent of Schools, and Governor Kerr Scott, but the two top State officials could uncover no additional funds available for this project.

Realizing that whether Southport has a gym or not depends on the interest of the citizens

Continued On Page Four

## Plant Farm To Be Expanded

Everett H. Sheppard Will Give Up Other Farming Ventures This Year To Concentrate On Tomato Plants

Tomato plant production in Brunswick county will take a big upward trend in 1951, Everett H. Sheppard of Shiloh, New Jersey, stated this week. He says that he will have to give up all of his bell pepper and bean growing in order to devote all of the land he has cleared and as much more as he can clear to growing tomato plants.

His orders for tomato plants for next year are running into millions. He says that eighty acres sown in tomato seed will barely give assurance of producing as many plants as he has orders for. He will start clearing more land the first of January.

Continued On Page Two

## Recent Visitor Extends Thanks To Community

Mrs. Mae Bamber Recalls Visit To Southport With Great Pleasure And Hopes To Return Here Some Day

HAS RETURNED TO TARRYTOWN, N. Y.

Mrs. Bamber Recalls Some Of Her Experiences As Visitor To Southport And Praises Local Hospitality

Councilwoman Mrs. Mae Bamber of Southport, England, a recent official visitor to Southport, North Carolina, was evidently very much pleased at the reception accorded her while in the American Southport.

Writing yesterday from 200 S. Broadway, Tarrytown, N. Y., where she now is, Mrs. Bamber asked W. B. Keziah to say a very sincere and grateful "Thank You" to the people of Southport. In part, her letter follows:

"My dear Bill: It is very nice to feel that I have known you so long now that I can address you as Bill—a really good sign that we have forged a strong link of friendship between our two Southports.

"This is a line to say a very big 'Thank You' for all your great kindness to me and my family last week; for the wonderful arrangements you made for us and all the splendid press, radio and person-to-person contacts you organized for our week being and comfort, interest and publicity. It was all truly marvelous, and will live in my memory. I shall never be able to thank you and the people of Southport enough for the outstanding welcome and friendliness they one and all extended towards me.

"The famous southport hospitality was very evident. I hope at some future date to be able to return a little of it to all of those good people who gave me all the gifts, either in good will or kind.

"I am indeed privileged to have known you to have made many friends in your Southport. One of these days I intend to come back. Having drunk of the water from your old Town Pump and gotten sand from your beaches in my shoes, I must make the old adage come true and return to your Southport some day."

## Flower Damage Caused By Cold

Horticulturist Reports Much Evidence Of Cold Hurt, But Remains Optimistic Over Possible Recovery

Flower growers say that it is difficult to estimate the extent of the damage done by the sudden and severe cold spell of last week. It may prove to have been pretty bad to a large portion of the camellia buds.

It will take the opening of the flowers some weeks or months from now to reveal if there was any damage to the blooms.

Very few of the camellia buds were damaged to the extent that they will fall from the bushes, and this only in the case of some varieties and where the bushes were badly exposed. Outwardly

Continued on page four

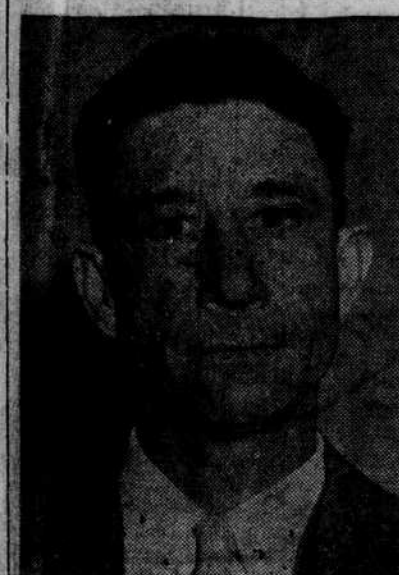


W. B. KEZIAH

So far as can be judged from just driving around the county, there is considerably less small grain, wheat and oats, on the farms of Brunswick than there was at the same time last year. The crops are rather conspicuous by their absence or scarcity all over the county. The absence of a small grain crop on the Gardner Farms at Northwest is especially noticeable. Until last week had not made a November trip there in many years without seeing a large acreage in grain.

Until half a century or so ago portions of Northwest township had many of the finer old homes of Brunswick county, such structures being especially noticeable in the Phoenix section. Big and modern for their time, many also had beautiful grounds. In the course of time these homes got

## Chairman



ELROY KING

## Elroy King Is Made Chairman County Board

New Member Of Board Of County Commissioners Are Named To Head Body; Other Members Previously Held Honor

Elroy King, the only new man on the board of county commissioners, was elected chairman at the organization meeting here Monday. R. L. Rabon served as chairman of the out-going board and H. O. Peterson, the third member, was chairman in 1934-36.

The new commissioners gave their approval to the location of the new Cape Fear river bridge at the Mitchell landing site at Acme. They also approved the taking over and improvement by the State Highway and Public Works Commission of a 2½-mile stretch of road at Mill Creek and a 5-mile stretch extending from Grissetown.

The board deeded the J. T. Clemmons land in Lockwoods

Continued On Page Four

## Southport Boy Publishes Story

Marcellus Cox, Senior At Furman University, Has Story Accepted For Publication In "Link" Magazine

Marcellus Cox of Southport, senior at Furman University, has received word from the General Commission on Chaplains, publishers of "Link" magazine, that his article "Behold This Man" has been accepted for publication. "Behold This Man" centers around the personality of Kagawa, Japanese convert to Christianity, whose teachings and influence have spread beyond the bounds of his own country.

Mr. Cox was introduced to Kagawa during the Allied invasion and occupation of Japan and from this experience is drawn the inspiration and source material for "Behold This Man."

A ministerial student, Mr. Cox first became interested in writing about four years ago and since that time several of his short stories and poems have appeared in the Furman campus publication, "The Echo." He is now

Continued On Page Four

## Our ROVING Reporter

off the new paths that were beaten. Roads were a long time in coming. The old homes disappeared around Phoenix and very few of such structures are now left. The long needed roads have at last come and with them are coming new homes. That section of Brunswick is set to again become thickly populated.

The fall and spring rounds of the tax collector are made mostly living at a distance from the county seat. Some of them are elderly people and others who seldom get to town. In the Northwest township section these calls are especially helpful. These the heads of most families work in the fertilizer factories and elsewhere. The paying of taxes is usually left to wives and other

Continued on page four

## Thirty-Six Students Hurt In School-Bus Wreck Monday Morning Near Southport

## Santa Claus Will Be In Shallotte Again

However, Somebody Has Caused The Old Gentleman To Lose His Pants; His Arrival Awaits Completion Of Wardrobe

Santa Claus will come to Shallotte again this year. That much is certain. Hobson Kirby of the Shallotte Trading Company and Sherman J. Register of the Shallotte Trading Company have both heard from him and they are jointly agreeing to make all of the arrangements and look after the old gentleman during his stay in Shallotte. He will alternate between the two stores, which face each other across the street.

But for Mr. Kirby, at least, a very distressing situation developed Saturday. Last Christmas Mr. Kirby got a special shirt and special pair of pants for Santa Claus to wear, just while he was visiting the little boys and girls in and around Shallotte. The shirt and pants felt very roomy and before he left Santa gave them back to Mr. Kirby to keep for him until he came back to Shallotte this Christmas.

Well, this past week Santa Claus made an inquiry of Mr. Kirby regarding whether the same suit would be in readiness for him to wear again this year. Mr. Kirby looked all around. Neither shirt nor pants could be found. When the State Port

Pilot's man asked him very pointedly what became of that shirt and the pants that he was keeping especially for Santa Claus when he visited Shallotte this year, he said: "Somebody must have borrowed those clothes and have forgotten to bring them back."

Now, it is very bad that the shirt of Santa Claus should be lost. And it is still worse if Mr. Kirby has lost his pants. The whole thing makes a pretty how-de-do. Whoever borrowed the shirt and pants should return them immediately.

With no pants ready for Santa Claus when he comes, Mr. Kirby said Saturday that he did not know yet when he and Mr. Register would be ready for Santa Claus. Of course, the kindly old gentleman won't come until plans for his wardrobe are complete.

All that Mr. Kirby and Mr. Register know is that Santa is certainly going to come to Shallotte. Both of them have promised, cross their hearts, that they will know just when Santa is coming in time to have something about it in next week's issue of The Pilot.

## New Officials Are Sworn In By Holden

### Begin Dismantling Walden Bridge

With work of tearing off the decking at the Walden Creek bridge starting Monday morning, Route 130 between Southport and Wilmington will be closed to traffic until April 1, according to a statement from the bridge contractor to Bill Hyatt, horticulturist at Orton.

During that period traffic will have to use 303 between Southport and Wilmington. School children living on Route 130 will be brought to the north side of the creek in their buses and will cross over a catwalk. Other buses will carry them to and from school on the south side of the stream.

Parties living in Southport and working at Orton or the Sheppard plant farm will have to get to and from their work as best they can.

## Telephone Lines Still Unusable

Business Activity In Lower Part Of Brunswick Under Severe Handicap Due To Lack Of Service

The broken-down telephone line from Shallotte and Supply to the central in Southport, has been completely out for the past five months, according to Jack White, young Shallotte business man. He says that during that time not a single telephone call has gone out from Shallotte.

This can easily be believed by those who note that the two wires are broken and down at several points between Shallotte and Southport.

Mending the breaks would do no permanent good. The wires are old and rusty and they would break again somewhere. Likewise, most of the poles are in bad condition, with some of them always falling or ready to fall in.

The line is owned by a Wilmington party. It was intended to give connections with the Bell system at Southport, about 10 phones being at points in Shallotte and Supply and on this line. Tolls had to be paid for all calls, even those made on the same line and for those coming in through the Southport exchange.

With the several breakdowns on the line the party owning the wires and poles appears to have completely abandoned attempts to give service.

According to various Shallotte

(Continued of page four)

Accident Occurred on Southport - Supply Highway When School Bus And Produce Truck Are Involved In Collision

SIXTEEN PUPILS ARE HOSPITALIZED

Both Drivers Charged With Reckless Operation Following Investigation By Members Of Highway Patrol

Thirty-six students of the Brunswick County Training School in Southport were injured, several of them seriously, Monday morning when the school bus in which they were being transported to school was in collision with a produce truck.

The accident occurred on a straight stretch North of Beaver Dam bridge about five miles from Southport on the road to Supply. Both vehicles were traveling in the direction of Southport. The collision resulted when the produce truck, driven by James H. Bullard of Route 4, Whiteville, struck the bus while attempting to pass.

The force of impact caused the school bus to overturn one and one-half times, spilling most of its passengers in a heap when the top broke free as the conveyance made its first revolution. The produce truck overturned one time, then skidded to a stop 138-feet away, headed back in the opposite direction.

The school bus was being driven by Vonnie Smith. He was one of four passengers who remained in the bus until it came to a final stop. His injuries consisted of lacerations and contusions. Both he and Bullard have been charged with careless and reckless driving.

James Grady Sibbett, also of Whiteville Route 4, was a passenger in the produce truck and sustained minor injuries consisting of abrasions about his head. Bullard was unhurt.

The accident was investigated by Sgt. A. H. Clark of Wilmington and Patrolman J. C. Taylor of Leland. They found that the accident happened when the truck hit the left rear corner of the bus. The bus swerved off the road and overturned, and the truck tumbled and skidded down the highway, also coming to a stop on the right side of the road.

Debris from the wreck was scattered about the scene, with apples, oranges, other fruit, and vegetables covering the road. School books, tablet paper and other school paraphernalia from the bus also were widely distributed.

All of the injured were rushed to Doshier Memorial Hospital for first aid attention, and 16 were admitted as patients. Most seriously injured were Mattie Pearl Reeves, 12, lacerations, contusions and head injuries; Helen Williams, 12, broken pelvis; Pattie Jane Bellamy, lacerations of head; Ella Mae Bellamy, head injuries.

Other injuries included Barbara Turner, abrasions, lacerations, contusions; Levi Frink, concussion; Foster Mitchell, lacerations; James W. Evans, broken shoulder; Johnnie Lee Reeves, lacerations

Continued On Page Four

## Tide Table

Following is the tide table for Southport during the next week. These hours are approximately correct and were furnished The State Port Pilot through the courtesy of the Cape Fear Pilot's Association.

High Tide	Low Tide
Thursday, December 7,	
5:45 A. M.	0:00 A. M.
5:59 P. M.	12:14 P. M.
Friday, December 8,	
6:44 A. M.	0:18 A. M.
6:57 P. M.	1:08 P. M.
Saturday, December 9,	
7:41 A. M.	1:11 A. M.
7:55 P. M.	2:02 P. M.
Sunday, December 10,	
8:36 A. M.	2:04 A. M.
8:51 P. M.	2:55 P. M.
Monday, December 11,	
9:32 A. M.	2:56 A. M.
9:48 P. M.	3:46 P. M.
Tuesday, December 12,	
10:26 A. M.	3:50 A. M.
10:45 P. M.	4:38 P. M.
Wednesday, December 13,	
11:21 A. M.	4:43 A. M.
11:43 P. M.	5:30 P. M.