

### The Pirate Log

By IRENE HOLDEN AND ANNIE RUTH SELLERS

The Shallotte Pirates added another victory to their season Thursday when they won over Wampee by a score of 13 to 4. Jack Henson and Samuel Thomas were the winning pitchers. It was a tit-for-tat game for a while, but our team got to work and finally came out on top. Carl Stanley outdid the mighty "Casey at the Bat" when he connected with a homer with the bases loaded. That feat will be one of his bed-time stories to his children one night!

Friday the baseball team racked up another victory by defeating an undefeated team — Conway. The score was 5 to 2. Kendall

Hardee was the winning pitcher this time, and we must say that each member of our team who played turned in a good performance.

The Shallotte High School Band, the Shallotte "B" Band, the high School Mixed Chorus, and the Whiteville High School band presented a "Festival of Music" on Friday night at the Shallotte School Auditorium. Since no curtain was pulled during the program, the audience got to see exactly what goes on behind the scenes in order to get ready to perform. Each unit that was on the program went through the ordeal of "warming up" just as they do when they practice during the day. A lot of work from the pupils plus two hard-working bandmasters added up to a very delightful evening of entertainment. Those who took part enjoyed the program as much as the audience.

The Whiteville High School Band was under the direction of Mr. Marion Martin, while Mr. J. Perry Watson directed the Shallotte Bands and Mixed Chorus. Every person with whom we have talked about the Festival seems to have enjoyed it immensely. Speaking in behalf of each member of each unit who performed, we'd like to say that we did enjoy working with Mr. Watson and Mr. Martin in preparing the Music Festival and sincerely hope that we will be able to make it an annual affair. Many thanks go to Mr. Watson and Mr. Martin for working so hard in order to make it possible to put on such a program.

Wednesday at sixth period we received the sixth edition of the "Jolly Roger", our annual. The cover is in our school colors, purple and silver, interwoven to make a silvery, angry ocean with

the traditional pirate ship plowing through them angry currents. The words "THE JOLLY ROGER" 1954 are printed under the ship. This year the annual is appropriately dedicated to Mrs. Katie Mae McKeithan. We all think the annual is a very good one and congratulate the sponsors, Miss Flora Collins and Miss Rachel Blanton, and the following members of the staff for doing such a wonderful job: Evelyn Register, Joan Bellamy, Joe Pigott, Pete Singletary, Shirley Lott, Billy Clemmons, Jane Rogers, Emily Gore, James Varnum, and Fred Simmons.

Mrs. Katie White and her first grade students would like to take this opportunity of publicly thanking their grade-mothers for the delightful parties that they have given them this year.

Seen Around: Sylvia Prince, Emily Gore and Elizabeth Calson spending the week end at Ocean Drive . . . Mrs. Nance, a former teacher, visiting us at school . . . Everybody wondering if they'd ever get all the annuals signed . . . Jane Platt having trouble with her dress . . . Elizabeth Fulford at Holden's Beach on Sunday night . . . Janice Royal and Berta Sellers at the movie on Saturday night . . . Carl Stanley leaving his baseball uniform home Monday . . . Ruth Sellers keeping a certain girl awake in bookkeeping . . . Bye now. See you next week.

#### Friends Invited To Attend Ceremony

Miss Betty Lou Gray, daughter of Mr. and Mrs. Hugh Gray of Supply wishes to take this means of inviting her friends and relatives to the Capping Exercises of her class at James Walker Memorial Hospital School of Nursing May 28th at 8 p. m. at Temple Baptist Church, Wilmington. The Rev. Mr. Pate, pastor of Calvary Baptist Church, will deliver the message of the evening.

Betty graduated as Salutatorian of the class of 1953 at Shallotte High School. Her class has attended Wilmington college this year for part of their studies. She has made very good grades and has enjoyed her work in the hospital very much.

**PRESBYTERIANS AT BEACH**  
Thirty-eight young men and women representing Presbyterian churches at Charlotte had a house party at the Baker's Lodge at Long Beach over the week end. They formed an especially nice gathering.



#### Candidate for HOUSE OF REPRESENTATIVES

If nominated and elected I will go to Raleigh and fight for a Better Brunswick County.

**CLINTON BELLAMY**

#### CANDIDATE FOR SHERIFF

I have had the experience to qualify me to serve you as Sheriff of Brunswick County and I have the ambition to be elected to this important position of honor and trust. I will appreciate your support and influence in my behalf as we enter the final days of the campaign.

**MAGNUS TRIPP**

## VOTE FOR S. BUNN FRINK FOR THE STATE SENATE

We Need A Man Of His Influence And Ability In Raleigh

WE MUST HAVE A MAN OF EXPERIENCE AND PROVEN ABILITY AS OUR STATE SENATOR ---

Bunn Frink has served for Three Terms as a member of the STATE SENATE, and he has a standing and seniority that will be of tremendous help as he works to get recognition and benefits for Brunswick County during the next session of the Legislature. The men he has worked with like and respect him.

BACK BUNN FRINK FOR THE STATE SENATE---- YOU WILL BE PROUD THAT YOU HELPED ELECT HIM.

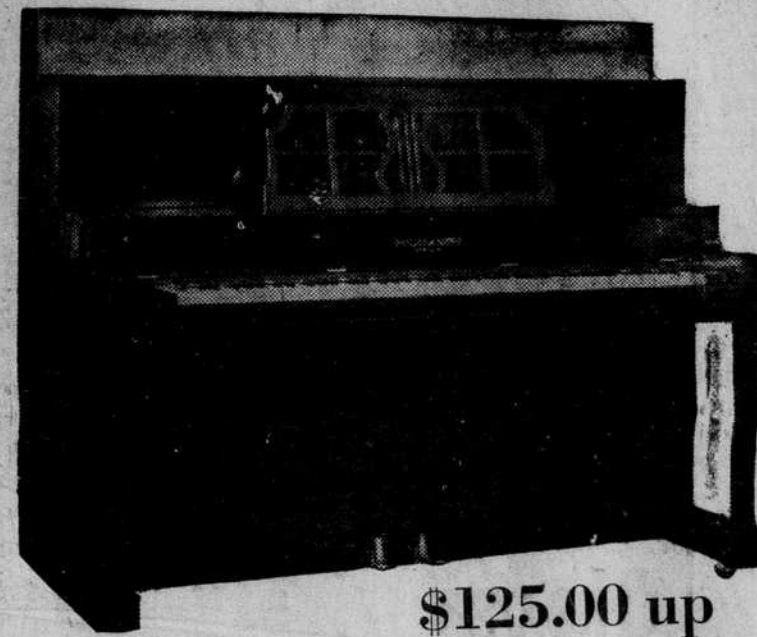
(This Advertisement Paid For By Friends Of S. Bunn Frink)



**R. C. A. And Many Other Makes**  
**TRADE-IN YOUR OLD SET PRICES TO SUIT YOU!**

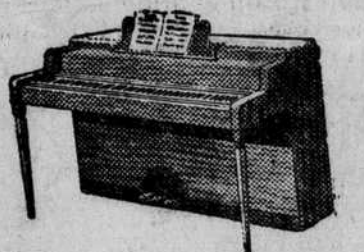
### A Good Selection Of PIANOS

Come in and make your selection early while we have a large group for you to Choose from! —  
Come in Look Them Over — We Can Save You Money!!



**WE WILL GIVE YOU A Good Allowance ON YOUR OLD PIANO ON One Of This Fine Selection**

SEE **Mr. Memory** BEFORE YOU **Buy Or Trade.**



### SEWING MACHINES

BRAND NEW AND FACTORY RE-BUILT

THE NEW

#### ZIG-ZAG

Sewing Machine

Can Sew on Buttons Without Attachments—  
**No Machine Can Do More!**

#### A Few Of The Operations

- |                        |                    |
|------------------------|--------------------|
| Appliques              | Elastic Insertions |
| Button Holes           | Hemming            |
| Embroidery             | Rolled Hems        |
| Initialing             | Tacking            |
| Darning                | Ruffling           |
| Mending                | Gathering          |
| Hooks and Eyes         | Pin Tucking        |
| Overcasting            | Hemstitching       |
| Quilting               | Borders            |
| Zig-Zag                | Gimping            |
| Lace Insertions        | Smocking           |
| Plain & Reverse Sewing | Patching           |

FOR THE FAMILY -- FOR THE HOME!!

Used by Dressmakers, Tailors, Designers, Alteration Rooms and Factories.



\$29.95 up

ALSO RE-BUILT

**Singer Sewing Machines**

In Portable or Console Styles

**TREADLE or ELECTRIC MODELS**

We Can Give You A Good Allowance For Your Old Machine on One of These New or Re-Built Machines

Also Complete Repair Shop For All Makes of SEWING MACHINES.

**FREE DELIVERY WITHIN 40-MILES-40**

Buy Today On These Easy Credit Terms  
**Not A Cent Down**  
NOT A CENT TO PAY UNTIL SEPT., 1954

**B. S. THOMPSON & CO.**

WHITEVILLE, N. C.