

### Rail Connection For All Docks

With Railroad Connected At Both Ends Of Wharves At Sunny Point Trains May Move More Freely

Wharfs Nos. 1 and 2 at Sunny Point are scheduled to have the wharf railroad connected at both ends with the Scholes yard railroads by the end of this week, according to Engineer Dusty Roads of the Diamond Construction Company.

This means that trains will be able to make the complete circle around these two docks. Heretofore there have been connections that would allow trains to enter one end of the docks. In such cases they had to back up when leaving.

It may be a little time yet before there are complete road connections, permitting entrance of trucks and cars at either end of the docks. Folks who drive on the docks at the present time have to turn around and leave the same way they came. Turning around on the big structures is easy for any kind of a vehicle and there is naturally no hurry to permit folks to go in at one end and right out at the other. Ken Stewart, superintendent of

construction for the Diamond Construction Company, stated yesterday that it will be about a full month before Dock No. 1 will be completed. No. 2 is already completed except for a few minor matters and No. 3 will be the last to be finished, sometime in September.

### Col. Wm. McAleer Much Traveled Man

Absent all of last week and gone again this week, Col. William A. McAleer of SPAALT remarked on his return from last week's trip that the looking after service cargoes at all deep water ports on the Atlantic Coast from Norfolk to Miami was no easy job. Even when things get completely organized it will still be trying.

During his absence things here are in charge of Lt. Colonel Greg McLeod and other officers. Col. McAleer remarked Saturday that they still hope to have open house with guided tours of the installation for the public early in September. However, it is still too early to do any definite planning for this event, especially with the officers having their hands full of other things.

During the spring training season, National League teams will play in 23 states and the District of Columbia.

### Chickens Need Space To Grow

If young chickens are to grow, it is absolutely essential that they have plenty of feeding, drinking and floor space, according to Charles D. Raper, County Agent.

A young chick weighing two ounces when it is hatched increases its size 24 times in growing up to three pounds in weight. If it is to gain weight and grow like it is expected to, it must eat and drink very often during the course of a day and the poultryman must furnish the facilities for it to have access to feed, water and space. Also feeders and water fountains must be placed as conveniently as possible.

"Too often the poultryman is lax in increasing the amount of feeding and watering space to meet the needs of the growing birds. This leads to retarded growth, dehydration of tissues and low vitality," Raper said.

Accepted standards for feeding space under Columbus County conditions is 100 inches of feeding space per 100 chicks during the first three weeks; from the third week through the 10th week, 300 inches of space per 100 birds. For drinking space, provide two one-gallon waterers per 100 chicks for the first three



weeks, and after that time, two three-gallon waterers (or its equivalent) per 100 birds. It is best to allow one square foot of floor space per bird for the first 10 weeks. These are minimum requirements and poultrymen should watch their flock and if more feeders, waterers or space is needed they should provide more for them.

flock during the chick stage. It is a critical period. Assuming that good quality chicks are started, the problem of maintaining their vitality is very important. High vitality is very closely related to disease resistance and mortality must be kept at a low level if returns from the project are to be secured", Raper pointed out.

### SHALLOTTE MAN

Continued From Page One  
bert Thompson, Bobbie Williams, James Wolfe, Rutherford Register, John Chadwick and Boyd Robinson. Honorary pallbearers were Dr. M. H. Rourk, Dr. Charles Graham and Dr. J. E. Evans.

### WEEK-END RAINS

Continued From Page One  
just when they were most needed and were of the sort that every drop accounted for itself instead of running into some ditch or branch.

John B. Ward of Waccamaw township was a pleased man over the rain when he was in town Monday. The same can be said of all members of the board of county commissioners and just about everybody who was in town Monday.

### AWARD CONTRACT

Continued From Page One  
The closing of the inlet and rebuilding of the road will add great

impetus to the already great building activity at Long Beach. Quite a number of up-state people are said to be ready to start rebuilding their homes or to building new homes, just as soon as the closing of the inlet progresses to the point of permitting material to be moved in.

### INVITATION TO

Continued From Page One  
Hicks and Franklin Greer. Twenty years—James A. Johnson, Edward F. Burdin and Preston B. Daughtie.

Ten years—Cornelia H. Smith, Margaret Wiard, Oscar M. Farr, Gordon M. Cole, Lindon Cahoon, George N. Hicka, Mildred Marshall, Webb C. Dickens, John C. Wilson, Jr., Samuel R. McCullough, James C. Thornton, Bert L. Parmenter, Lewis J. Ruffelt.

National Safety Council awards for safe driving were presented by George F. Tienken to the following: Jesse F. Jones, 13 years service; Benjamin W. Morrill, 8 years service; Emphraim E. Swain, (a Southport man) 4 years service.

Carlton Huband received a \$30 award for suggesting the use of linoleum for the surfacing of tops of drafting tables.

Leon Fletcher got a \$10 award for suggesting an improved method of labeling drawing print files. Others who received a cash

awards this year for suggestions and who were recognized in Thursday's ceremonies:

C. B. Johnson; R. B. Ivester; L. C. Whitley; J. W. Lewis; Dorothy McDonald; Mary Ann Bradshaw; Callie Bryant; E. M. Smith and K. M. Meleig.

R. B. Ivester was master of ceremonies. Lt. Col. Jackson, assistant district engineer, made some introductory remarks, describing the Corps' history.

### WEATHER BRINGS

Continued From Page One  
ter of interest all summer and fall. It is now open for business, as is the attractive concession building that is a part of it. The concrete boardwalk is finished and work on the miniature golf course is under way. A skating rink will also be available during the coming month.

At Long Beach work on the golf course is also well started and the new pavilion is open for business.

Since the end of World War II private industry has spent more than 10 billion dollars for scientific research, an independent research organization reports.

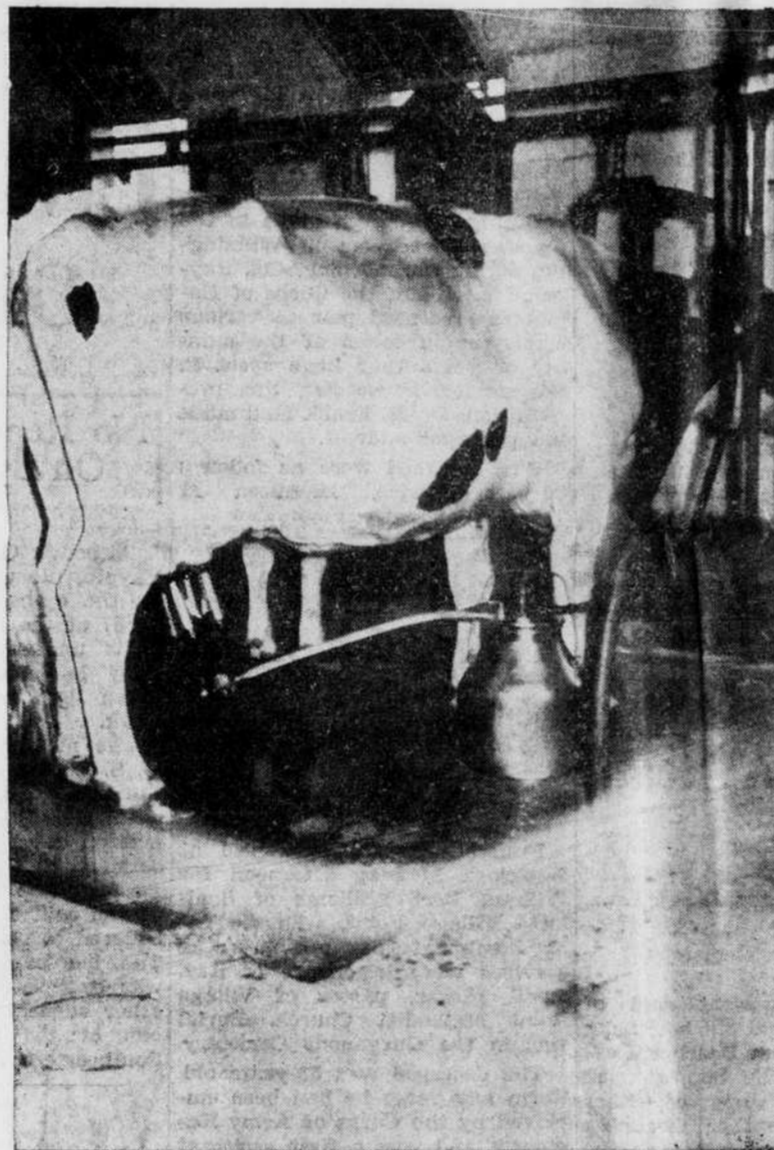
The 90 per cent of parity support price for flue-cured tobacco for the 1955 crop will be no less than \$48.30 per hundred pounds.

# White Ice Cream And Milk Company Presents

## A DAIRY MONTH STORY

## "WHAT WE DO FROM COW TO YOU"

This Is A True Story, Taken Directly From Our Files—We Are Happy To Present It Now, During Dairy Month, To Show You, The People Of Columbus And Brunswick, Our Producers And Consumers, The Part We Play In Supplying Both A Market For Columbus's And Brunswick's Growing Dairy Industry And A Quality Line Of Dairy Products For Our Consumers.



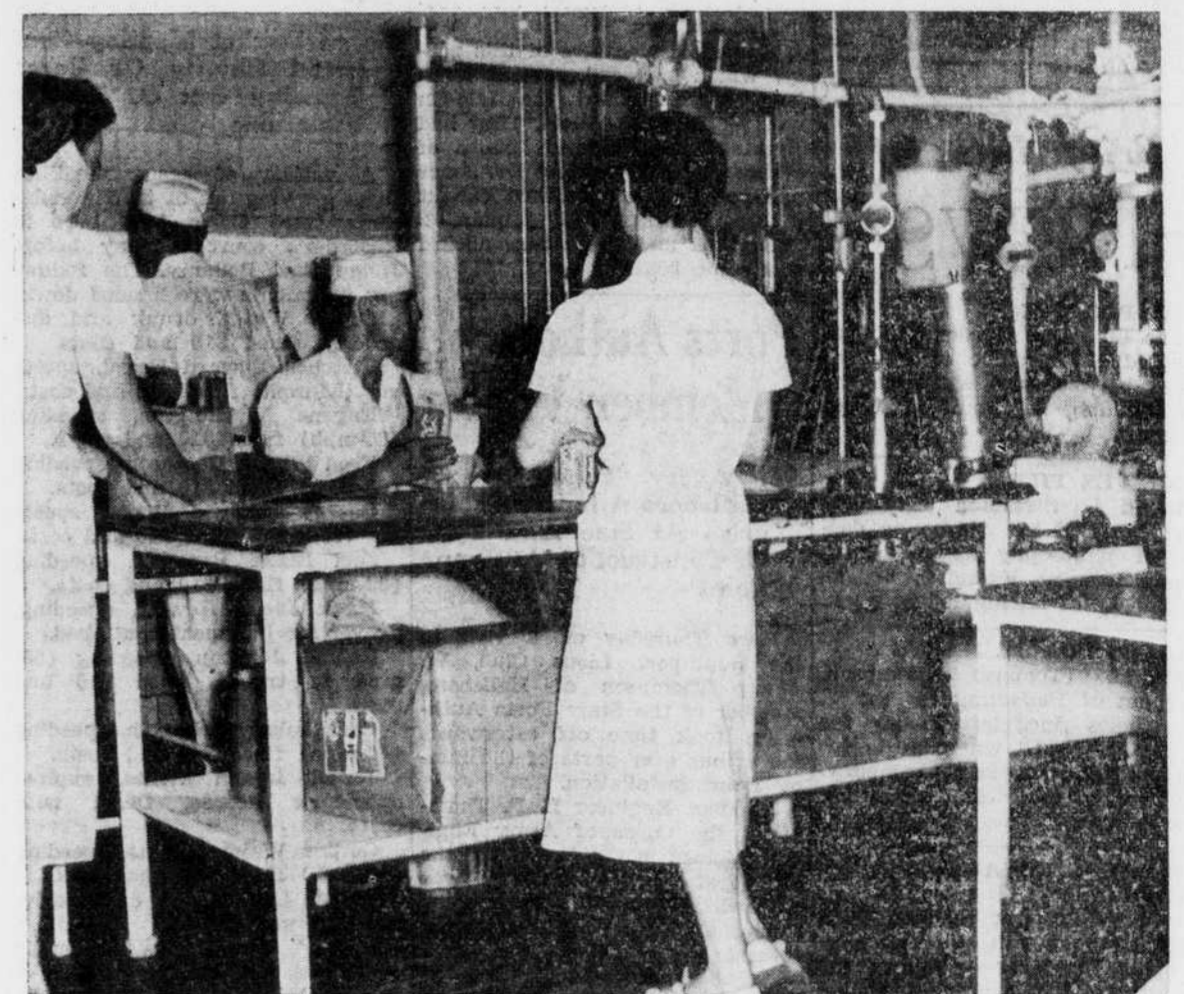
1—The Story begins in a milking barn, such as this of J. R. Powell, Columbus Dairyman, one of the Top local milk producers for WHITE ICE CREAM & MILK COMPANY. From his Sanitary barn comes Milk to make our dairy products.



2—From POWELL'S BARN the milk is loaded on to Fast refrigerated trucks and sped to WHITE'S in Wilmington. Every precaution is taken to insure speed in handling to keep Milk fresh for turning out WHITE'S Superior Dairy Products.



3—ONLY A SHORT TIME LATER, milk is unloaded by WHITE'S workers, carried into the plant, where first steps are taken in turning out familiar products bearing WHITE'S Label.



4—IN THE PLANT, Scrupulously clean and sanitary, WHITE'S goes to work, pasteurizing and homogenizing—Here, too, some of the Milk is used for making Ice Cream, (in every flavor imaginable) and other products such as SEALTEST tasty, creamy Cottage Cheese.

5—BOTTLED AND PACKED, the finished Dairy Products leaves WHITE'S and head again to consumers in Columbus and Brunswick Counties.

# White Ice Cream And Milk Company