

MEET THE FOLKS At Sunny Point

(By LT. COL. Wm. F. MURPHY)



WILLIAM R. MOURING



REX L. HAMMACK

In an installation as large and as necessary to establish and maintain an efficient communications system. To do this, personnel must be placed on the payroll who are capable of maintaining the installed equipment in the proper working condition. This is by way of introducing William R. Mouring, radio repairman and installation supervisor at Sunny Point.

Mr. Mouring was born in Baltimore, Maryland, and moved to Wilmington, where he attended New Hanover High School and then moved on to Baltimore Polytechnic Institute in Baltimore. He has always been interested in things electrical and is an amateur radio enthusiast, his call letters in Wilmington being W4OQS. In past years he has also acquired a hobby for building model boats.

Through Mr. Mouring's efforts in the Communications Division, SPAT has enjoyed a long period with no major radio failures. In addition, certain systems have been set up with our neighbors, communications wise, that makes it possible for SPAT to be tied into all means of communication that in any way affect operations at Sunny Point.

Mr. Mouring is married and resides in Wilmington. He has three children, Mrs. Jane McCall now living in Honolulu, T. H. L., a son, Joan Mouring, presently stationed at Bunker Hill Air Force Base, Peru, Indiana, and Barbara Ann Mouring of Wilmington who is attending New Hanover High School.

VISIT IN NEW BERN

Mr. and Mrs. H. M. Fain spent Wednesday through Sunday at New Bern. Mr. Fain is with the SPAT administrative forces.

Another member of our fine fighting team is Rex L. Hammack. Rex is a Texan, calling Hamilton, Texas, his place of birth. He attended local schools in Ireland, Texas, and the Veterans Vocational School in Hamilton, Texas, and Irvington, Alabama. During World War II, Rex saw service from 1943 through 1945; in addition to this, he can look back on a three year hitch in Uncle Sam's Navy prior to World War II. These tours of duty took him into European areas and short tours of duty in the Pacific.

At present, Rex is living in Supply with his family. He is married to the former Ernestine Rebecca Tippie of Hamilton, Texas, and they are the parents of eleven children, seven boys and four girls.

Rex lists his hobbies as hunting and fishing. His present location at Sunny Point with residence in Supply affords him ample opportunity to pursue the hobbies listed above.

RETURN FROM VACATION

Mr. and Mrs. Robert Willis and son, Charles, have returned from their 3 week's vacation and Mr. Willis has resumed his duties as pharmacist at Watson's Pharmacy. George W. Smith, who has been relieving him, has returned to his home at Fayetteville.

ICE CRUSHER IS

Continued From Page One
As shrimp or fish are loaded a layer of ice is placed on the bottom of the hold in which they are to be received. Then comes a layer of the fish or shrimp and another layer of crushed ice is placed to cover the catch. The layers alternate until the hold is filled. Filling another hold is then

Bridge To Increase Ocean Isle Beach's Popularity

News that a bridge connection between the mainland and Ocean Isle Beach in nearby Brunswick County will be established in the future has brought much satisfaction to residents of this area.

Not only do many persons in Whiteville and Columbus County own homes or homesites at Ocean Isle, but it is also the nearest beach to this area. The Brunswick beach is located only about 40 miles from Whiteville.

One of the few drawbacks to the pretty Brunswick strand has been the fact that travel to and from it was somewhat limited because a state-operated ferry was the only mode connecting it with the mainland. With the coming of the bridge, this bottle-neck will be eliminated and popularity of OI is expected to become unlimited.

C. Heide Trask, Third District Commissioner for the State Highway and Public Works Commission, said Wednesday that plans were under way for moving the bridge presently located at Harbor Island, in New Hanover County, to Ocean Isle.

A new four-lane bridge is being built at the Harbor Island spot.

Trask said that current plans of the SH&PWC called for construction of foundations and approaches to the old bridge at Ocean Isle. When the new Harbor Island structure replaces the old one, the latter will be taken down the Intracoastal Waterway on barges to the Brunswick beach site.

It will probably be the Summer of 1957 before the Ocean Isle bridge is available for use, according to highway reports.

Up to the present time whole blocks of ice had to be placed on the boats and the only method of putting it into use was to chop it up with ice axes. The crusher that repositis the crushed ice in the holds without waste of any sort saves both ice and much labor and time.

Pigott, who is far-sighted in his fishing operations, stated this week that such a machine had been needed here for a long time, both for his own boats and others.

Right now shrimp production is a little better at Georgetown, S. C., than here. Pigott is loading his own boats with the crushed ice and sending them to Georgetown. There the boats fish for 4 or 5 days and then return with their catches to the Pigott house here, where the catches are packed for shipment. With an abundance of ice in the very best condition, the boats naturally have a much wider range of operation.

HALF-DAY SESSION

Continued From Page One
McKinley Horne, public drunkenness on highway, fined \$25 and costs.

Grover Robinson, drunk driving and possession, fined \$110 and costs.

Benjamin Rudolph Hardey, speeding, fined \$10 and costs.

Cornell Stanley, speeding, fined \$15 and costs.

George L. Mikel, speeding, fined \$10 and costs.

Archie Robinson, larceny, not guilty. In this case Curtis Long had charged Robinson with stealing his redbone hound dog. In his own defense Archie produced two redbone hounds in court and asked Curtis to identify which one of them was his. Spectators got a laugh over the situation as Curtis was unable to say which

PATROLMAN DEAL

Continued From Page One

speed in excess of 75-miles per hour, crossed the Eagle Island causeway and on into New Hanover county. At the east end of the North-East River bridge the fleeing car ran into a Ford occupied by a Huntersville man, his wife and daughter. No one was hurt in either car but both machines were damaged \$250 each. The driver of the car that

Patrolman Deal was pursuing jumped and ran, with Deal catching up with his man on a railroad track under a bridge. The car had 33-gallons of non-tax paid whiskey and the driver will face charges in New Hanover county on August 30. The charges there are transporting, reckless driving, accident, hit and run, speeding in excess of 75-mph. He is also charged with failing to stop for red light and siren on the patrol car.

Sheriff Elbert H. Gray was with the patrolman on this chase.

BRUNSWICK SCHOOLS

Continued From Page One

Gertrude Loughlin, Tancel Marion Lee, Mary Lee Norment and Blanche E. Webb.

Leland High School, Holland Manning, principal; high school: Mary Burt Bryant, Veneta Geedy, Irene Manning and Clara Strong.

Elementary: Mamie C. Coker, Madge W. Smith, Ted Beaton, Gertrude K. Galloway, Mildred Grace Taylor, Mary S. Aust.

Mildred S. Tenuta, Ruth H. Byrd, Mildred Naylor, Ruth W. Adams, Otis Powell, Dorothy Evans and Abba Lossen Crumpler.

Waccamaw High School, J. G. Long, principal; high school: Claire T. Evans, Paul M. Brummett, Vivian Stanley, Ruth Galloway, Huston Warren and Bernie



FACTS AND FIGURES on "casualties" and "damage" to target areas have been fed into an electronic computer such as this for Operation Alert 1956 to get a lightning-quick picture of the bomb-damage assessments in the 76 target areas throughout the nation. Evaluated data from target areas goes by wire to the operations room at FCDA Headquarters. (U. S. Air Force Photo)

Rae Odum.

Elementary: Zelma R. Hewett, Judith G. Lewis, Mildred M. Lewis, Muriel W. Bennett, Myrtle Evans, Mary Lillian Watts, Elsie Dodson, Christine B. Brummett, Daisy R. Long, Louise K. Walton, Hortense McEachern, Mary Long, Doris Ward, Valeta Suggs, Emily H. Pitts and Pansy Louise Page.

Shallotte High School, A. A. White, principal; high school: Edna W. Russ, Katie M. McKeithan, Ida C. Mintz, Paul Weatherly, Gene Frye, Alton Green, Maude Green, Lois Fay Hewett, Johnnie

McCurry Holden, LeRoy Mintz, Lorraine Soles and Roscoe Poovey.

Elementary: Katherine R. White, Frances Galloway, Beatrice Sabiston, Mildred Milligan, Ruth Galloway, Jessie L. Hayes, Sarah Joy Russ, Frances B. Stone, Clare Mae Russ, Lillian G. Hewett, Otis Holden, Jewel I. White, Muzette W. Arnold, Macey B. Weeks, Louise Bell FormyDuval, Celene Coomes Russ, Ira G. Long, Catheryn C. Mintz, Isabel Taylor, Sarah Baker Rogers, Romona Frink King, David Carmichael,

Joyce Carmichael and Robert Selers.

Brunswick County Training School, A. C. Caviness, principal; high school: Jesse A. Francis, H. Orrie Gore, Marion Y. Morris, Ophelia B. Parker, Sylvester S. Riggs, Jr. and Frances Claudia Riggs.

Elementary: Anthony L. Davis, Annie E. Francis, Eva V. Lee, Josie McKoy Greene, Florence M. Williams, Estelle Swain, Cora M. Davis, Alberta R. McLeod, Alice G. Price and Eleanor I. Swain.

Piney Grove School, E. A.

Armstrong, principal; Queen E. Randolph and Araminta Gore, Union High School, E. E. Dicks, principal; high school: Easley E. Abraham, Pearson Dubar, Irene B. Hankins, Allene Johnson, Ernestine Grissett, Geraldine M. Spruill and Pearl O. Weaver.

Elementary: McCluey Hewett, Olivia W. Morgan, Olivia S. Johnson, Virginia McMillan, Madie Kearney Dubar, Jessie Monroe, Clyda H. Gore, Lenora M. Clemmons, Bernyce M. Brown and Mildred H. Taylor.

Cedar Grove School: Henry B. Greene, principal; Blanche H. Gause, Charles O. Bryant, James H. Frink, Sadie D. Evans and Lillie Mae Gore.

Longwood School: Jonathan Hankins, principal; Catherine B. Davis, Louise M. Gore, Bertha McGill and Alma R. Caviness, Lincoln High School, J. F. Clemmons, principal; high school: Eleanor B. Beamon, Edgar Gore, Dorothy B. Hankins and Annie Laurie Mims.

Elementary: Hollie L. Bryant, Joseph A. Morris, Viola McCoy, Lattie S. Galloway, Alice B. Greene and A. Elizabeth Swain, Chapel Road School, Abraham McCoy, principal; Louise Y. Gore, Hattie E. Willis, Catherine M. Hall, Beatrice R. Hynes and Retha H. Bryant.

Phoenix School, Van W. Galloway, principal; Thelma Clemmons, Anna B. Williams and Hester Davis.

Navassa School, Benjamin Thomas, principal; and Dorothy M. McKoy.

Brunswick County's REGISTRATION Books Are Closed

FOR THE

Extra General Election To Be Held On Saturday, Sept. 8th

Saturday, Sept. 1st

IS

Challenge Day

Change In Polling Places

EXUM PRECINCT
The Polling Place has been moved from its former location to the building next door to the BENNETT TRADING CO.

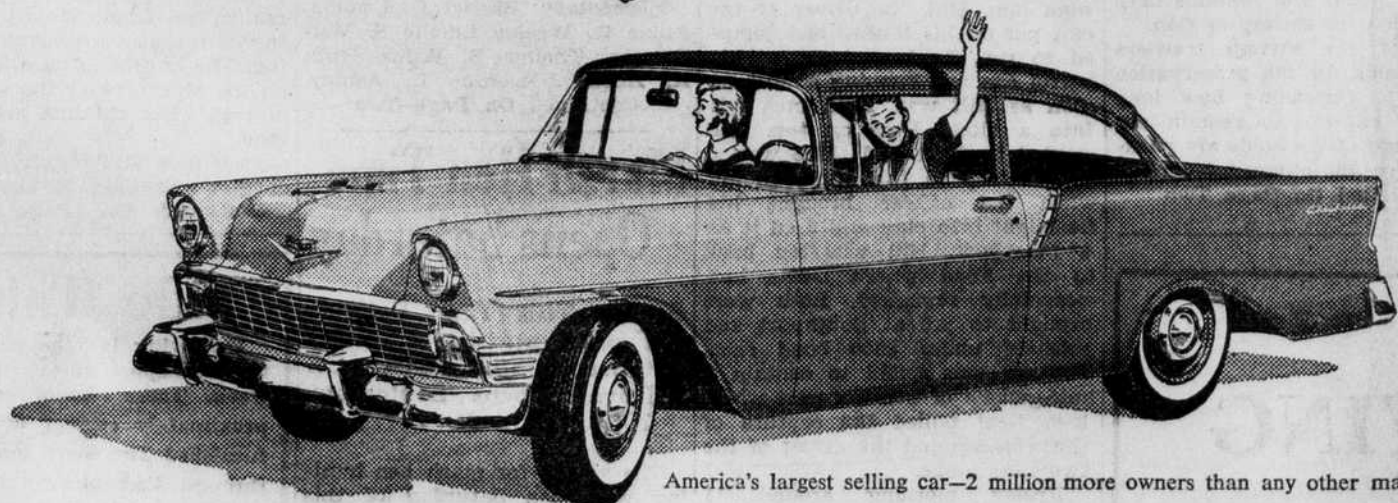
SECESSION PRECINCT
The Polling Place has been moved from its former location to the NORMAN BELLAMY GARAGE BUILDING.

Hoods Creek	MRS. MERLE PETERSON	Shallotte	MRS. PERLIE RUSS
Leland	MRS. R. C. HOLMES	Frying Pan	MRS. LESLIE CHADWICK
Town Creek	HOUSTON WILLIAMS	Grissettown	MRS. BRYAN BENNETT
Bolivia	E. O. RABON	Shingletree	MRS. LACY BENNETT
Southport No. 1	MRS. BOYD MOORE	Longwood	DAVE BENNETT
Southport No. 2	MISS ANNIE ST. GEORGE	Ash	R. I. LONG
Mosquito Branch	CARL WARD	Waccamaw	MRS. WRENT MINTZ
Supply	MRS. H. O. ROBINSON	Exum	MRS. MILDRED F. VEREEN
SeceSSION	MRS. NORMAN BELLAMY		

ARTHUR J. DOSHIER, Chairman Brunswick County Board of Elections

America's greatest performance at Chevrolet's lowest prices!

You can get Chevrolet's top performance even in the extra low-priced "ONE-FIFTY" SERIES!



America's largest selling car—2 million more owners than any other make!

You're looking at the performance buy of the year! Quite a statement? Sure, but then this is quite a car.

It's a Chevrolet "One-Fifty"—most modestly priced of all the sassy new Chevies. And it brings you super quick responsiveness—a secure feeling of easy confidence—that makes driving so

much safer and more pleasant. Horsepower, you know, ranges clear up to 225.

This budget-minded "One-Fifty" is a beautiful thing to handle. Come in and see how far your dollars go—and how fine you go—in Chevrolet's lowest priced series.



You get more car when you buy it... more dollars when you sell it! Chevy has the highest resale value of the leading low-priced models!

Only franchised Chevrolet dealers display this famous trademark

ELMORE MOTOR COMPANY

BOLIVIA NORTH CAROLINA