

ACP Practice Is Available For County Farmers

Spring Sign-Up Now In Progress, With Variety Of Opportunities Being Offered To Obtain Government Help

SOIL IMPROVEMENT CHIEF OBJECTIVE

County Committee Determines Extent To Which Government Funds Will Be Paid

The ACP Spring sign-up period started Monday and will extend through February 8. All farmers are urged to come to their ASC office at Supply and put in their request for assistance through ACP cost-sharing for the needed practices for each individual farm in Brunswick county. A letter has been mailed to each farmer with a list of each practice that has approved for the year 1957.

Any farmer may request the Federal Government to share the cost of conservation practices included in the program for which he needs cost-sharing on his farm.

The ASC Committee determines the extent to which Federal funds can be made available to share the cost of each practice approved for a farm, taking into consideration the county allocation of funds, conservation problems in the county and the problems on the individual farm.

Listed below are some of the approved practices for Brunswick county:

Permanent pasture or hay-initial establishment of permanent vegetative cover non-cropland; Additional vegetative cover in crop rotation-establishment of additional acreages of vegetative cover in crop rotation to retard erosion and to improve soil structure; Liming materials on farmland-initial treatment of farmland to permit the use of legumes and grasses for soil improvement and protection; Forest tree planting-initial establishment of a stand of trees on farmland for erosion control, watershed protection or forestry purposes; Permanent Pasture or Hay improvement-initial improvement of an established permanent vegetative covered; Farm ponds for livestock and or irrigation water; Forest improvement-initial improvement of a stand of forest trees; Open-ditch drainage-construction of permanent drainage ditches; The drainage-construction of permanent tile drainage; Winter cover crop-establishment of vegetative cover for winter protection from erosion; Summer annual legume-establishment of vegetative cover for summer protection from erosion; Year-round cover-establishment of a vegetative cover to protect cropland throughout the 1957 crop year.

Brief Bits Of NEWS

RETURNS FROM FLORIDA
Miss Annie Mae Woodside has returned home after a month's visit with relatives in Florida.

RETURN FROM CALIFORNIA
Mr. and Mrs. Roy McKeithan and little daughter, who recently moved back to Greenville after living in California for a year, spent the past week here with relatives.

JOB OPEN
The Brunswick County Health Department is interested in receiving applications from persons interested in vaccinating dogs during the rabies clinic this year. Headquarters for this office are in Southport.

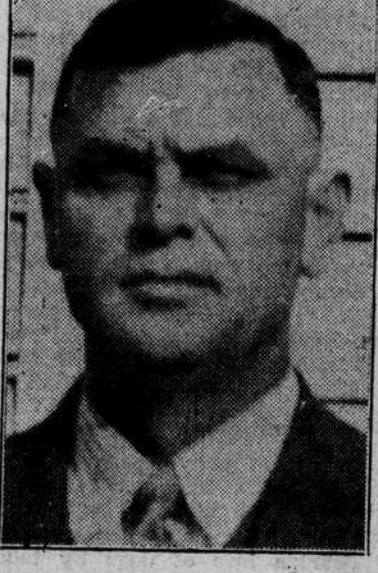
FLOWERS UNINJURED
A few wide open camellia flowers were damaged last week by the cold spell. The buds are still in perfect shape apparently and there will soon be a great deal of bloom. The camellia bushes are loaded with buds. So far as can be learned, there was no real damage to anything by the cold along the coast in this county.

AT LITTLE RIVER
Iverson Lewis of Little River, who recently returned from Germany and received his discharge from the Army, is now at his home at Little River, S. C. Mrs. Lewis, the former Miss Joan Bennett, daughter of Mr. and Mrs. L. E. Bennett of Southport, and secretary in the law office of Ernest Parker, has joined him there and the couple has started housekeeping.

Walter Stanaland Dies In Hospital

Prominent Brunswick County Citizen Died In Hospital In That City Tuesday Afternoon

Walter M. Stanaland, for more than 25 years a leading public figure in Brunswick county, died Tuesday afternoon in a Wilmington hospital. No details concerning his funeral arrangements were available this morning.



The deceased was a native of Brunswick county and was a resident of the Thomasboro community. During his life he had been a farmer and a fisherman, but he will be best remembered as a public official and political leader.

One two occasions he was elected to serve as judge of Recorder's court, and in 1946 he was appointed to fill the unexpired term of the late John White as sheriff of Brunswick county. He had also been a candidate for the Democratic nomination for member of the Board of Education and for State Senate.

He was active in every political election of the past 30 years, and the power of his influence was felt in every part of the county.

He is survived by his wife and several grown children.

Superior Court Will End Today

Permanent Pasture or Hay-initial establishment of permanent vegetative cover non-cropland; Additional vegetative cover in crop rotation-establishment of additional acreages of vegetative cover in crop rotation to retard erosion and to improve soil structure; Liming materials on farmland-initial treatment of farmland to permit the use of legumes and grasses for soil improvement and protection; Forest tree planting-initial establishment of a stand of trees on farmland for erosion control, watershed protection or forestry purposes; Permanent Pasture or Hay improvement-initial improvement of an established permanent vegetative covered; Farm ponds for livestock and or irrigation water; Forest improvement-initial improvement of a stand of forest trees; Open-ditch drainage-construction of permanent drainage ditches; The drainage-construction of permanent tile drainage; Winter cover crop-establishment of vegetative cover for winter protection from erosion; Summer annual legume-establishment of vegetative cover for summer protection from erosion; Year-round cover-establishment of a vegetative cover to protect cropland throughout the 1957 crop year.

Permanent pasture or hay-initial establishment of permanent vegetative cover non-cropland; Additional vegetative cover in crop rotation-establishment of additional acreages of vegetative cover in crop rotation to retard erosion and to improve soil structure; Liming materials on farmland-initial treatment of farmland to permit the use of legumes and grasses for soil improvement and protection; Forest tree planting-initial establishment of a stand of trees on farmland for erosion control, watershed protection or forestry purposes; Permanent Pasture or Hay improvement-initial improvement of an established permanent vegetative covered; Farm ponds for livestock and or irrigation water; Forest improvement-initial improvement of a stand of forest trees; Open-ditch drainage-construction of permanent drainage ditches; The drainage-construction of permanent tile drainage; Winter cover crop-establishment of vegetative cover for winter protection from erosion; Summer annual legume-establishment of vegetative cover for summer protection from erosion; Year-round cover-establishment of a vegetative cover to protect cropland throughout the 1957 crop year.

Judge W. H. S. Burgwyn sends Jesse Simmons to jail pending disposition of minor charge.

Judge W. H. S. Burgwyn is presiding over the January term of Brunswick county Superior court, which is expected to come to a close today.

The most serious charge scheduled for trial was that of manslaughter against Lulhis of New York, who is a former member of the U. S. Marine Corps. It was while he was in service that he was involved in an accident that cost the life of Lacy High at Grissetown last year. The State accepted a plea of guilty to leaving the scene of an accident and the defendant was taxed with costs. It was offered in evidence that a civil settlement already had been made in this case.

Jesse Simmons, Brunswick county man up for driving a motor vehicle after his license had been revoked, entered a plea of guilty, but during the course of his testimony there were conflicts that did not please the judge, who ordered that he be held in jail pending final sentence.

Jack Daniels, Jr., colored, was found guilty of carnal knowledge and was given from 8 to 10 years.

R. D. White, Jr., pleaded guilty to charges of speeding and was fined \$25 and taxed with costs.

Idelle Vereen, white woman of Windy Hill Beach, S. C., was found not guilty of drunk driving. Several divorces and other actions were disposed of.

Report On Road Work In County

Highway Commissioner Heide Trask Reports Several Construction Projects Completed During December

During December, the State Highway Commission completed 48.28 miles of road improvements, one bridge and several new structures in the Third Highway Division, Commissioner Heide Trask of Wilmington reported this week.

In Brunswick, contract forces completed work on newly relocated NC 130 for 8.24 miles and built a new 90-foot long bridge with reinforced concrete caps and steel I Beams at the following location: From a point on NC 87, 4.5 miles north of Southport, northeast passing northwest of Orton Plantation to a point on NC 130, 14.0 miles south of Wilmington. The newly relocated highway is 24 feet wide. The road from a point on existing road at South Carolina line and 2.2 miles east of Brinkville, S. C., east to a point on US 17, 0.6 mile west of Thomasboro was widened.

Continued On Page Four

Needed Varieties Recommended By County Agent

Farmer Must Plant Variety Best Suited For Own Soil And One That Will Be In Market Demand

INFECTION FROM NEMATODES SERIOUS
Certain Varieties More Susceptible To This Danger Than Others, And This Is Another Problem

By A. S. KNOWLES
Choosing a tobacco variety is very important for any farmer, for he needs to select one that is suitable for his own situation and at the same time fulfills the demand of the market.

More than 70 named tobacco varieties are being grown in North Carolina, according to more than 6,000 growers reporting in a 1954 survey. No one variety has the exact combination of qualities that will satisfy the buyers of all tobacco companies. As a matter of fact, growers have learned from experience that the description of what one company wants in a tobacco will not fit the description of what all other companies want.

North Carolina farmers want to produce sufficient quantities of various tobaccos to meet the demand of all buyers and potential buyers.

Some varieties are more likely to produce tobaccos that are thin and chaffy, while other varieties tend to produce more solid tobacco having medium to heavy body. There are differences between varieties in color, grain, chemical composition, aroma, flavor and many other characteristics.

Many characteristics of tobacco can be referred to only in general terms. A variety's appearance, growth habits, chemical composition and disease resistance are easily affected by weather conditions, soils, cultural practices and the presence of multiple disease causing organisms.

If the land is tree or disease free you may choose one of the following varieties: 402, Hicks, Buyers choice, White Gold, Bottom Special, Virginia Gold, Golden Harvest or Golden Cure. If your land is diseased with Blank Shank or one of the following: D. B. 101, D. B. 102, or Coker 187. Where Granville Wilt is the only disease involved may use Oxford 26, D. B. 28, Golden Wilt, or D. B. 102.

Where nematodes are present it is wise to use gas for control. Nematodes destroy a quarter million dollars worth of tobacco each year in Brunswick County. Don't let it happen on your farm.

Former Pastor Passe At Apex

The Rev. J. A. Neilson Once Served As Pastor Of Southport Baptist Church

The Rev. J. A. Neilson of Apex died Tuesday in the Rex Hospital in Raleigh where he had been taken following a heart attack. He was 80 years old and was widely known throughout eastern North Carolina. Born in Sicily where his parents were missionaries.

Our ROVING Reporter

Mrs. Betty Privette, tax collector for Brunswick county, is to make her traditional rounds of the county next week. She goes in order that old people and people who do not have an opportunity to come to town may pay their taxes at some point near their homes. At some places a lot of inconvenience is saved. Since Mrs. Privette is a new collector and since we have been going around with other collectors for years, we will be making the trip with her next week. For our part we will appreciate information that will make a news story or subscriptions to the paper.

Mr. and Mrs. Harry Varnum of Varnumtown on Lockwoods Folly lost their two-story home by fire some ten days ago. This was a matter that escaped our attention in the news columns. As a matter of fact, we are not yet in possession of details. This is to express our regret. Mr. and Mrs. Varnum are fine people, greatly respected in their community and wherever they are known. A number of years ago Mr. Varnum was a member of the board of county commissioners.

PAT Visitor



Major General E. C. Eshner, Chief of Engineers, U. S. Army, paid an unofficial visit to Sunny Point Army Terminal Sunday. He was the principal speaker on Saturday night at the annual SENCBA banquet in Wilmington.

Brunswick Man Now President Of Beach Group

James C. Bowman Assumes Leadership Of SENCBA During Ceremonies At Annual Banquet Saturday Night

James C. Bowman, Southport attorney, assumed his duties as president of the Southeastern North Carolina Beach Association during ceremonies at the annual banquet of this organization Saturday evening in Wilmington. He succeeds E. L. White of Wilmington.

Congressman Alton A. Lennon served as toastmaster at the banquet, which featured an address by Major General E. C. Eshner, Chief of Engineers, U. S. Army.

General Eshner spoke at length upon the problems of beach erosion and promised that the Engineers will cooperate in helping in every way possible with this problem. He also spoke of the project to deepen the Cape Fear river channel to a depth of 34 feet, and called this one of the major works along the Atlantic Seaboard. He set at rest any rumor that the Wilmington District.

All Hands Get An Insight Of Work

Many employees at Sunny Point have seen very little of what goes on in the gigantic installation, other than what goes on in the office or point at which they are employed. Realizing this fact, Col. Frank T. Edson last week proposed the idea that all personnel should be given a complete tour of the installation, see what and where others are doing to make a complete job of terminal activities.

Southport Man Receives Award

William Oberjohann Receives \$200 For Operation On Job With U. S. Engineers

Four awards of \$200 and one for \$100 were presented employees of the U. S. Army Engineers in Wilmington this past week, the presentations being for outstanding attention to duties during the past six months. The awards were presented by Col. R. C. Rowland, Jr.

One of the \$200 awards went to Wm. Oberjohann of Southport, employed in the operations department. William, or Bill as he is known in Southport, has been with the Engineers for quite a number of years. Before that he

Plenty Of Fresh Water Available

Geological Reports Indicate Presence Of Great Fresh Water Supply Underneath Most Of County

By W. B. KEZIAH
Here Sunday with Mrs. Holden and their sons, Halstead and John, Dr. R. H. Holden of Shallotte was very much interested in the abundance of ground water that exists over most of Brunswick county. He asked how near the source supply of Bouncing Log Spring comes to the Shallotte area.

Our information from geologists is to the effect that there is a great strata of limestone under Brunswick county. It is shaped like a wedge, 200 feet deep along about all of the Cape Fear River area and tapering to the point of the wedge at Green Swamp in the western part of the county. This puts limestone under practically all of the county.

It is from limestone that the water in Brunswick originates and therefore there is ground water of both domestic and industrial quality over about all of Brunswick in varying quantities, depending on specific areas. Research has determined that

Area Development Council Meeting

G. V. Barbee Host At Meeting Friday Afternoon At Restaurant At Yaupon Beach

CHOOSE NAME FOR NEW ORGANIZATION

SENCBA Development Organization Chosen From Entries Submitted In Name Competition

Meeting at Yaupon Beach Friday afternoon as guests of Mr. and Mrs. G. V. Barbee, directors of the newly formed 7-county Development Organization, selected SENCBA Development Organization as a name from the large number that had been proposed.

A Wilmington woman, Mrs. H. M. Daniel, was awarded her choice of a week's vacation for herself and family at any of the beaches or her choice of a \$100 cash prize for the name that was accepted.

The counties in the organization are Bladen, Brunswick, Duplin, New Hanover, Onslow, Pender and Columbus.

Rescue Truck Being Sought

Local Drive For Funds With Which To Match Civil Defense Money That Is Available

Southport's new fire station, Civilian Defense Headquarters and Police Department Headquarters will be completed this week and Ormond Leggett, Chief of the Fire Department, announced Tuesday that a drive will be started this week for funds for the purchase of a completely equipped rescue truck.

Although definite selection of the type of truck has not been made at this time, the machine uppermost in view costs \$5,500. One-half of this will be raised locally and the other half is assured from Federal matching funds.

Grand Jury In Session During Court Session

This Body Named Monday To Serve During Entire Year; Completed Work For Term On Tuesday

H. FOSTER MINTZ NAMED CHAIRMAN

Thorough Study Made Of Conditions Existing At Various Schools In Brunswick

The grand jury was called to order Monday by H. Foster Mintz, with G. H. Lanier acting as secretary. The grand jury in session two days.

The jury examined 10 bills and had found 9 true bills and 1 not true bill.

The examined the following schools and buildings and make the following recommendations: At Leland white school a coal bin should be provided for; one of the rooms should be painted except the overhead; the rear steps of the lunch room need replacing.

The Lincoln High School has an inadequate water system. At the Phoenix colored school the front porch needs repairing. The Navassa colored school roof needs repairing. The Chapel Road colored school is in fair condition.

The Shallotte High School is in fair condition, however the old building in the rear is in need of bathroom facilities, the plaster needs repairing and the roof needs repairing. The Shallotte agriculture building roof is leaking and needs repairs.

The Prison Camp No. 301 is in good condition.

The Bolivia High School has an inadequate water system (not enough pressure); one water fountain needs repairing; roof needs repairing; needs blinds replaced or repaired in three classrooms; plaster needs repairing and the overhead ceiling needs fastening; some seats need replacing in three classrooms; the gym roof is leaking and needs repairing; the agriculture building is leaking badly and needs new roof; the lunch room is good considering the condition of the building.

Piney Grove School is in fair condition considering the building and facilities. Cedar Grove School needs several door locks and handles.

The County Home is in excellent condition.

The Brunswick county tax office in Southport is in good condition. The health office is in need of many repairs and facilities. The Welfare Office is in good condition. The Clerk's Office in the courthouse is in good condition, with the exception of two new desks and new blinds for the windows. The jail is in good condition.

The Southport High School needs plaster in the left front of the auditorium. The Brunswick County Training School needs a new roof on the trade building and new lighting installed.

The Waccamaw High School is in good condition. The Longwood Colored School needs one new stove, rest rooms and new blackboard. The Union Colored School is in good condition.

Patrolmen Seth L. Thomas, H. F. Deal and W. H. Morgan Jr., reported that all the school buses were checked December 17 and were in good condition and that regular monthly inspections are made by them.

Tide Table

Following is the tide table for Southport during the next week. These hours are approximately correct and were furnished The State Port Pilot through the courtesy of the Cape Fear Pilot's Association.

High Tide	Low Tide
Thursday, January 24	
2:53 A. M.	9:01 A. M.
3:02 P. M.	9:15 P. M.
Friday, January 25	
3:52 A. M.	10:00 A. M.
4:00 P. M.	10:11 P. M.
Saturday, January 26	
4:48 A. M.	10:56 A. M.
4:55 P. M.	11:04 P. M.
Sunday, January 27	
5:40 A. M.	11:45 A. M.
5:46 P. M.	11:53 P. M.
Monday, January 28	
6:28 A. M.	0:00 A. M.
6:33 P. M.	12:30 P. M.
Tuesday, January 29	
7:07 A. M.	0:37 A. M.
7:14 P. M.	1:13 P. M.
Wednesday, January 30	
7:46 A. M.	1:19 A. M.
7:53 P. M.	1:53 P. M.