

Second Training Union Conference Now In Session

This Marks Another Busy Week In Summer Program Of N. C. Baptist Assembly At Fort Caswell

OTHER SESSIONS STILL TO COME

Hope Is Expressed That Facilities At Caswell Will Continue To Be Used This Season

On Monday, July 29, the second of three Training Union Conferences of the summer at the North Carolina Baptist Assembly opened its program under the direction of James P. Morgan, state secretary of the Training Union department. Inspirational messages with congregational singing will be featured in each evening service. Morning classes will be concerned with organizational methods and age-group interests. The various movements of the work of the Baptist State Convention will be described in daily addresses. "We expect some five hundred guests for the week," points out Fred J. Smith, Assembly manager, "and our friends in eastern North Carolina neighborhoods are urged to drive in for as much of the program as they can arrange. Meals are served in the modern cafeteria with its "A" rating at reasonable rates."

Final Training Union rally of the summer will be held August 5-10. A number of families have reserved housekeeping facilities at the assembly for the late summer and early autumn after the close of the convention's programs. "We expect to increase the number of housekeeping units available before the opening of the 1958 season," explains Mr. Smith, "since we receive more applications for this type of housing than we can provide. Church groups are planning more seaside meetings and retreats each year, and this is a trend with which we want to co-operate." Since Mr. Smith will remain in the Southport community throughout the year, increasing provision for out-of-season delegations can be arranged.

From August 12 to August 17, Preaching and Christian Home Week will close the current ten-week season. The Rev. James S. Potter, pastor of the Tabernacle Baptist Church, Raleigh, will preach each evening that week. Morning classes will be conducted by Dr. Ralph E. McLain, head of the department of religion of Meredith College. Both speakers are widely known for their vivid Biblical exposition. "We are fortunate to be able to offer this team of appealing speakers," Mr. Smith says, "and we hope that a number of families and individuals will make plans to enjoy their fellowship with us."

Brief Bits Of NEWS

BULLETIN
The Corps of Engineers District office here revealed today that a plan has been developed for closing the Long Beach Inlet and forwarding to the Federal Civil Defense Administration Regional Office at Thomasville, Ga. for review.

CAKE & PIE SALE
The W. S. C. S. of the Trinity Methodist Church will sponsor a cake and pie sale on Saturday morning on the porch of the Leggett's home.

RETURNS HOME
William Houghton, Safety Director at SPAT, has returned to his home on Moore Street from New Brunswick, New Jersey, where he attended the funeral of his father.

BASEBALL SUPPER
A ham and seafood supper will be served at the Community Building on August 16 for the benefit of the Southport baseball team. The chef will be a retired navy man with 21 years experience in the galley.

SPAT VISITOR
Capt. Gabrielsen, civilian in charge of the Charleston, S. C., and Savannah, Ga., outpost activities, visited SPAT on Wednesday the 24th of July for the purpose of receiving an award for Sustained Superior Performance. Capt. Gabrielsen returned to Charleston \$200 dollars richer and with the plaudits of the Terminal Commander, Col. Frank T. Edison, still ringing in his ears for a job well done.

New Principal At Waccamaw School

John Weldon Hall Of Lumberton Will Assume Duties As Head Of Brunswick County Institution Immediately



John Weldon Hall, dean of Carolina Business College in Lumberton, has been elected principal of Waccamaw high school in Brunswick county. He plans to begin some of his pre-school administrative activities next week. The new principal, who has had wide experience in the field of education, succeeds John G. Long, who resigned to accept the position of superintendent of schools. Hall has served as director of admissions at Brevard College and as dean and registrar at Pfeiffer College.

Born March 13, 1910, in Arlington, Ky., he attended Kentucky secondary schools before entering the Navy in 1938. He later returned to his high school where he served as a science teacher and assistant principal. He later served as principal of the Graves County, Ky. high school and returned to the Navy. After a World War II stretch in

uniform, he became city superintendent of the Columbia, Ky. school system and later attended Peabody College as a graduate assistant to Dr. Harold Benjamin. He earned both his B. A. and M. A. from Murray State College. He has done work on his PhD at Peabody College. An active Methodist, Hall has (Continued on Page 4)

Another Tarpon Brought In Here

Efforts Being Made To Land More Of These Exciting Big Game Beauties

OUTSIDE FISHING HURT BY WEATHER

Only Reports Received For Activities During Past Weekend Indicate Plenty Of Dolphin Still In This Area

Sandy Robertson of Wrightsville Beach provided the big fishing story on the local scene during the past week-end when he landed a tarpon Saturday while fishing on the Ella Shoals off Bald Head Island.

His fish, the second tarpon to be weighed in here this season, weighed 41½ lbs. and was caught on a 12-lb test line on spinning tackle. He played the fish for 15 minutes before bringing it into the boat. Robertson was using a red and white torpedo-shaped plug with triple hooks.

In addition to other fishermen who are making regular trips over into the bay in quest for tarpon, Mack McHose of Westfield, N. J., is here for a three-weeks try for these fish. Last year he got the thrill of his life when he had one on for a losing fight.

Weather during the past week-end was not conducive to good fishing, and only one boat reported good luck. That report came from Capt. Walter Lewis of the John Ellen. On Sunday he had R. W. Yast and party of Charlotte out and came in with 9 king mackerel, 53 dolphin, 2 amberjack, 2 barracuda and 1 shark. The next day he had B. A. Magnier (Continued on Page Four)

Weekly Court Session Held

Variety Of Cases Disposed Of Here Monday Before Judge Earl Bellamy In Recorder's Court

Four men were given preliminary hearings before Judge Earl Bellamy in Brunswick county Recorder's court Monday on charges of first degree burglary, assault with intent to commit rape and being an accessory before the fact.

The following judgments were handed down: Henry Butler, probable cause found as to first degree burglary and assault with intent to commit rape. Bound over to Superior court for trial, bond set at \$250.

Rufus Walker, probable cause found as to being an accessory before the fact to first degree burglary and attempted rape. Bound over to Superior court for trial, bond set at \$250.

Franklin Blund, probable cause found as to first degree burglary and attempted rape. Bound over to Superior court for trial, bond set at \$250. Tommy Butler, assault with intent to commit rape. Bound over to Superior court for trial, bond set at \$250. (Continued On Page Six)

Menhaden Help Tonnage Record For This Port

Figures Show That Production Of Edible Fish Locally Was Well Below Normal For Year 1956

MENHADEN CATCH WAS SECOND BEST

Records Maintained By Corps Of Engineers Show Volume Of Menhaden As Handled In State Ports

By STEVE WALL
Some 210 tons of seafood and a whopping 78 million menhaden fish marked the catch at Southport in 1956, according to a report by the Corps of Engineers.

While it is generally admitted that 1956 was one of the worst years in edible fish activities, the 78 million menhaden catch was topped only by 1949 when 122 million were taken. Duvall Greer, who compiles such figures, said these tabulations were based on records for the past 10 years. The combined menhaden catch last year in the Southport-Morehead City-Beaufort area amounted to 374 million fish, some 21 million better than the 353 million netted in 1949.

Figuring eight tenths of a pound as the average weight of menhaden, the total catch in the 1956-49 order was 139,600 tons and 141,200 tons. Southport tonnage in the same order was 31,200 tons and 48,800 tons.

Preliminary figures for 1956 show that Wilmington Harbor, reaching past Southport to the ocean, handled 4,829,000 tons of cargo, some 136,000 tons above the 4,693,000 tons in 1955. The Morehead City harbor had a total of 506,000 tons last year against 446,655 tons in 1955 for (Continued on page four)

Special Farm Bureau Meeting

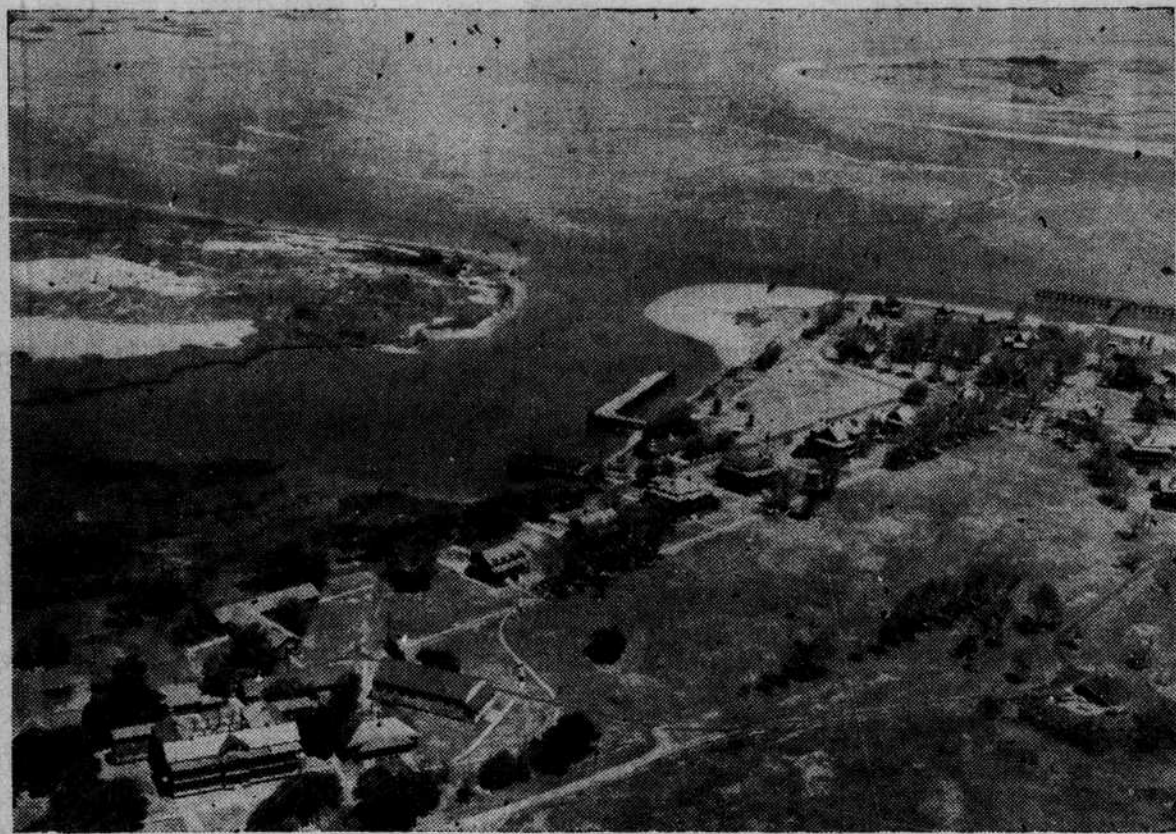
Joe Stanaland, President Of Brunswick County Farm Bureau, Wants A Change In ASC Responsibility To Farmers

At a meeting of the board of directors of the N. C. Farm Bureau in Raleigh on July 8 Joe C. Stanaland, President of the Brunswick County Farm Bureau, brought up the matter of ASC responsibilities as they relate to the farmers. He charged that as of now there are no responsibilities on ASC.

"It is all placed entirely on the farmer's back and it is about to break him down to the point that the tobacco program is in jeopardy of being voted out if some of the red tapers and inequities to the farmers aren't eliminated," Stanaland told the board.

After a lengthy discussion and as a member of the board he moved that a committee be appointed to study the problems as they exist between the ASC and the farmers and that a report be made to the next board meeting. This motion was carried. Stanaland says that he feels that ASC should assume the responsibilities of measuring the farmer's tobacco (Continued on Page Four)

Baptist Assembly



AERIAL VIEW—This is the North Carolina Baptist Assembly at Fort Caswell as seen from the air. In the left center is shown the yacht basin and across the top is the Cape Fear River, with the dock shown on the right. The dock is a favorite fishing place for assembly visitors.

Tobacco Market Prices Higher

Busy Shipping Schedule Coming

SPAT officials have announced the shipping program for the month of August. Tentative plans call for the arrival of five vessels during this period. Two of these are retrograde movements calling for discharge operations and the others are export type of loads. Discharge operations also mean a greater concentration of trucking in this area and it is expected that the city will again see an influx of ammunition vans in the Southport area.

County Leaders To Meet Monday

Brunswick County Farm Bureau Officers Will Participate In District Membership Planning Session In Whiteville

Brunswick County Farm Bureau leaders will attend a district Farm Bureau meeting in Whiteville on August 5 at 9 a. m. at the Farm Bureau Office, according to Joe C. Stanaland, county president.

The Farm Bureau leaders will gather to make plans for this year's membership drive with leaders from New Hanover, Bladen and Columbus counties according to Stanaland. Members of the State Farm Bureau staff including Paul Shackelford, fieldman for this district (Continued on page three)

Averages Are Above Those Received At Last Year's Opening Sales, But Fall Short Of Expected Prices

BETTER PRICES ON LOWER GRADES

Warehousemen Are Pleased With Volume Received On Opening Day; Stabilization Corporation Buys Little

Border Belt tobacco markets opened yesterday (Tuesday) for their 1957 selling season, with prices averaging from \$2 to \$14 above those paid on opening day last year. However, the estimated market averages of \$51 to \$54 per hundred were below what farmers and warehousemen had been expecting in view of acreage reduction.

In general, the greatest change in prices occurred in the lower grades, which were considerably higher than prices paid last year. However, it appeared that on some of the better grades there was little or no advance in price.

It was significant that little tobacco was purchased by the Stabilization Corporation, and there were few instances where offerings of "undesirable" tobacco was made.

Warehousemen were pleased with the volume offered on opening day, but said there was a noticeable lack of weight. They estimate that in addition to the reduction of poundage because of acreage cuts, there will be at least another 10-percent loss because of light weight tobacco.

Busy Schedule Being Conducted

Yaupon Village Methodist Church Returning To Eastern Standard Time For All Activities

Following the example set by the Southport area, the Yaupon Village Methodist Church is returning to Eastern Standard Time in its weekly schedule. The time change went in to effect on Monday and will involve the entire program of church activities.

Sunday morning worship will be held at 11 o'clock, Eastern Standard Time, rather than Daylight Time, and the Sunday School classes for all age groups will convene at 10 o'clock Eastern Standard Time in the homes of the various teachers.

Week day activities include cottage classes for primaries (ages 6-8) and juniors (ages 9-11), which meet at 10:30 on Wednesdays and 10 o'clock on Fridays. Directed recreation for children and youth is held on Yaupon Beach each afternoon, Tuesday through Friday, from 3 to 5 o'clock, Eastern Standard Time.

Residents and visitors in the Yaupon Village-Long Beach area are cordially invited to attend the various programs, held at the new times. Directions to the activities may be obtained at the Skating Rink.

Assignment Of Students Made For Next Year

Brunswick County Board Of Education Adopts Regulations Governing Assignment And Makes Designations Of Schools

Members of the Brunswick County Board of Education met here Monday night and adopted rules and regulations governing the assignment and enrollment of pupils in the administrative unit under their jurisdiction. They also assigned children in the Brunswick county schools for the coming term.

Passage of the resolution setting into effect the assignment plan is in accordance with legislation passed by the 1955 session of the General Assembly. Although their action Monday night was necessary to validate their action in making specific assignments, practically speaking no change was made from student assignment that has been followed during recent years.

Students from Waccamaw elementary school will move up to Waccamaw high school; from Shallotte elementary school to Shallotte high school; from Bolivia elementary school to Bolivia high school; from Southport elementary school to Southport high school; from Leland elementary school to Leland high school; from Brunswick County Training School to Brunswick County Training School; from Piney Grove elementary school to Brunswick County Training School; from Union elementary school to Union high school; from Cedar Grove elementary school to Union high school; from Longwood elementary school to Union high school; from Lincoln elementary school to Lincoln high school; from Chapel Road elementary school to Lincoln high school; from Phoenix elementary school to Lincoln high school; from Navassa elementary school to Lincoln high school; All students who attend Chapel Road, Phoenix and Navassa are assigned to Lincoln high school.

The complete text of the two resolutions is printed as a legal notice elsewhere in this issue of The Pilot.

Preliminary Start On New Bridge

Earth Fills For Bridge Approaches At Ocean Isle Being Done By Contractors For Road Project

S. E. Cooper, secretary and treasurer of Continental Construction Company, Inc., said this week his firm has begun the construction of earth fills for bridge approaches and roadway in Brunswick county.

The \$75,000 one-mile roadway project is located approximately seven miles south of Shallotte at Ocean Isle Beach a sub-division owned by Odell Williamson. The project involves approximately eight acres of clearing, seven acres of grubbing and some 53,000 cubic yards of various (Continued On Page Three)

Anniversary Of Organization Of TC Is Observed

U. S. Army Transportation Corps Organized In 1942; Made Permanent Branch Of Army In 1950

HISTORIC RECORD FOR THIS SERVICE

Efficient Operation Of Supply Lines By Land, Sea And Air Responsibility Of This Branch Of Service

Today July 31, marks the 15th anniversary of the organization of the Transportation Corps but at Sunny Point Army Terminal no special observation is planned.

Forerunners of the present-day Transportation Corps are found in the Military Railway Service of the Civil War, the Army Transport Service of the Spanish-American War and the Transportation Service of World War I, all disbanded upon the cessation of hostilities.

Recognizing the need for a special transportation service, the War Department created the Transportation Corps, as it known today, on July 31, 1942. Having proven itself in the tests and trials of the Second World War, the Corps was established as a basic, permanent branch of the Army on June 28, 1950.

Today, TC personnel are on the job, worldwide, to meet the varied and vast requirements of the United States Armed Forces. This is particularly true in the New Hanover and Brunswick County areas where the Sunny Point Army Terminal has played a most important part in the economical welfare of the surrounding communities.

Among the keynotes of recent Transportation Corps programs has been the emphasis on improvement of existing equipment, development of greater speed of movement, and economy of manpower in handling, storing, transferring and delivering supplies by land, sea and air.

The Corps has also sought to (Continued on Page Four)

More Red Cross Funds Reported

Chairman Of Brunswick County Chapter Reports Additional Funds For Benefit Of Hurricane Victims

Mrs. Phil King, chairman of the Brunswick County Chapter, American Red Cross, said Monday that other scattered reports have come in with funds for hurricane relief and these have been transmitted through proper channels.

She also reminds others who may wish to make contributions to this cause that they may be sent in through the local chapter. All of these funds have been sent to help with the rehabilitation program at Cameron, Louisiana.

Two contributions had been previously reported. They were Shallotte Baptist Church, \$32 and Gospel Center at Shallotte, \$13.40. The latest reports have come in from Oak Grove, \$11; Mt. Pisgah, \$28.65; Town Creek, \$10.20; Calabash, \$6.04; Pleasant Grove, \$6.25. In each instance, the collection was made through a Baptist church.

Tide Table

Following is the tide table for Southport during the next week. These hours are approximately correct and were furnished The State Port Pilot through the courtesy of the Cape Fear Pilot's Association.

| High Tide | Low Tide |
|----------------------|-------------|
| Thursday, August 1, | |
| 0:00 A. M. | 5:54 A. M. |
| 12:25 P. M. | 6:29 P. M. |
| Friday, August 2, | |
| 12:36 A. M. | 6:49 A. M. |
| 1:25 P. M. | 7:30 P. M. |
| Saturday, August 3, | |
| 1:33 A. M. | 7:46 A. M. |
| 2:26 P. M. | 8:33 P. M. |
| Sunday, August 4, | |
| 2:33 A. M. | 8:46 A. M. |
| 3:26 P. M. | 9:35 P. M. |
| Monday, August 5, | |
| 3:32 A. M. | 9:44 A. M. |
| 4:23 P. M. | 10:33 P. M. |
| Tuesday, August 6, | |
| 4:30 A. M. | 10:40 A. M. |
| 5:17 P. M. | 11:25 P. M. |
| Wednesday, August 7, | |
| 5:24 A. M. | 11:31 A. M. |
| 6:05 P. M. | 0:00 P. M. |

TIME and TIDE

By JIMMIE HARPER

It was Wednesday, August 4, 1937. The Pilot came out on schedule, carrying this week the news that W. R. Lingle had recently been elected principal of Southport High School for the coming term. Plans had been made for Governor Clyde R. Hoey to fire the starting gun at the upcoming regatta, and a house-party was scheduled to be held at the Duplex House on Caswell Beach during Race Week.

Our editor observed that progress in paving the road from Shallotte to Whiteville indicated good news for county tobacco farmers, and it was recorded that David Watson and Dan Walker would return to Louisburg College in the fall. (Rising sophomores)

On August 5, 1942, tobacco prices were found to be higher than in the previous year, but The Pilot carried the banner headline, "No Additional Tires Available For Farmers." School principals Henry Stone of Shallotte and W. R. Lingle of Southport noted an alarming rise in teacher resignations.

While Capt. John Erikson noted that the crop of menhaden were unusually skittish, other forms of wildlife were seemingly attracted to civilization. Mary Ann Mollycheck had discovered a chicken snake in her upstairs bedroom, and Ralph Potter had cornered a four-foot, eight inch alligator in the Yacht Basin and had done him in with a .22 rifle.

August weather is apparently rousing to school boards, for on (Continued On Page Four)