

Brunswick Group Appears Before Road Commission

Rep. James C. Bowman Was Spokesman For Brunswick County At Thursday Afternoon Appearance Before Highway Commission

SPECIAL SESSION HELD IN WILMINGTON

Other Brunswick County Citizens Present For Presentation Of Highway Needs Of County

Representative James C. Bowman was spokesman for a delegation of Brunswick county citizens who appeared before the State Highway Commission in session Thursday afternoon in Wilmington. Also appearing before this group was County Attorney S. B. Frink and F. Herbert Swain, chairman of the board of county commissioners.

After presenting requests compiled by the commissioners, Bowman broached the subject of a long-range plan for a highway from Ft. Fisher to Bald Head island, with the added proposal that ferry service be provided between that point and Ft. Caswell and Southport.

During the course of his remarks, Frink recalled that there is legislation introduced by him and State Senate in 1953 to provide ferry service across the lower Cape Fear.

The formal requests were for repairs and additions to the primary road system, as secondary road requests are handled through another approach. The projects cover every section of Brunswick county.

Later the commission announced that it hopes to relocate US 74-76 at Leland putting an overpass over the railroad and bringing the road into the US 74-76 and US 17 junction. It would eliminate a serious of traffic slowing curves through a congested area.

US 74 was the topic of another group, the East-West association, seeking a direct route from Wilmington to Charlotte. This group wants a limited access route into the Queen City from the Atlantic port.

Brief Bits Of NEWS

PASTORS CONFERENCE
The regular monthly meeting of the Brunswick Baptist Pastors Conference will be held at 12:30 o'clock Tuesday at Mt. Pisgah. The Rev. J. D. Hales is pastor.

REVIVAL SERVICES
The Rev. D. J. Stoner of Easton Baptist Church, Winston-Salem, will be guest minister for the revival next week at Mt. Pisgah Baptist Church. Services will be conducted at 7:30 o'clock each evening, and everyone is invited.

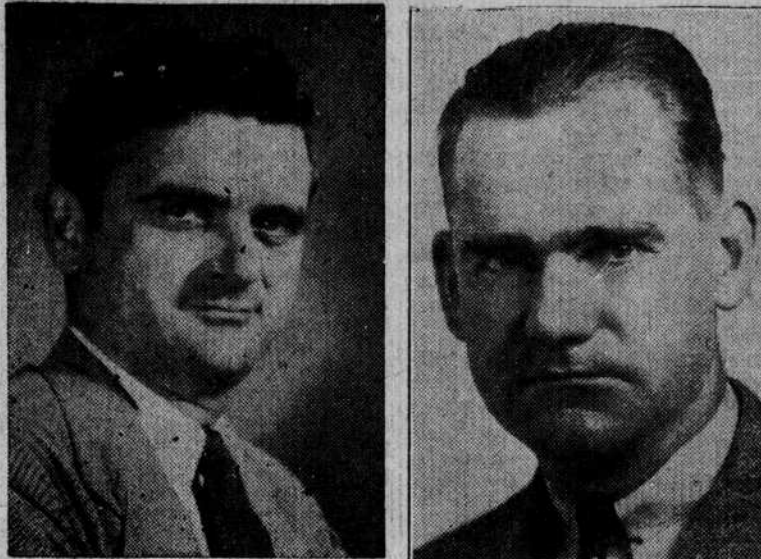
REVIVAL MINISTER
Dr. W. D. Morris, pastor of Temple Baptist Church of Wilmington, will conduct revival services next week at Boone's Neck Baptist Church. Services will be held at 7:30 o'clock each evening and will run Monday through Friday.

LILY SALE
Members of the Junior Garden Club, under the direction of Mrs. Guy Garrett, will conduct a lily sale on Saturday for the benefit of the Brunswick County Easter Seal Society for Cripple Children. Mrs. John G. Swan is chairman of this drive for the Southport Woman's Club.

COURT IN SESSION
Superior court is in session here this week, with Judge Susie Sharp of Reidsville presiding. The first two days of the session, which is for trial of civil cases, was taken up with the case of Long vs State Highway Commission. It was expected that this case would go to the jury this afternoon.

NAVAL RESERVE UNIT
There will be a special meeting of the Southport Naval Reserve Unit Friday evening at 7:30 o'clock in the Community Building. All persons between the ages of 17 to 18½, or those with previous military experience, are urged to attend. The unit now has a complement of 20 members, and these will be sworn in Monday evening at the Naval Reserve Center in Wilmington.

In Senate Race



RUNNING—Ray H. Walton, left, S. B. Frink, center, and Odell Williamson, right, are all candidates for the Democratic nomination for State Senate. Both Walton and Frink have served before in this office and Williamson has had prior legislative experience as a member of the House of Representatives. This race promises to be among the more interesting in the coming primary.

Candidates Enter Primary Contest Of Commissioner

Three Members Of Present Board And One Former Member Seek Nomination; Third Man Enters Race For Coroner

This was the week that candidates began to announce for the office of county commissioner, and a total of four men made their formal announcement. Moreover, each of these four men has experience in this office.

Included in the group are F. Herbert Swain, chairman of the present board, who now is completing his fourth year in that office; R. B. Bellamy and Durwood T. Clark, who are now completing their first term; and R. L. Rabson, who served for several years as county commissioner before deciding not to run two years ago.

The first candidate for the board of education announced this week when Chandler Rourke gave notice that he will seek the preferential vote for representative to that body from the Shallotte School District. Both Bolivia and Southport are due to vote on a representative this year.

The race for coroner drew a third candidate this week when G. C. Kilpatrick, who currently is filling out the unexpired term of the late Sam T. Bennett, filed for this office.

Field Worker For Cancer Is Visitor

Miss Martha Pugh Talks With Local People About Importance Of American Cancer Society Program

Miss Martha Pugh of New Bern, field worker for the American Cancer Society, talked with a group of Southport residents Thursday about the organization of a permanent chapter here in Brunswick county. Tentative plans were made for a meeting at an early date, at which time she will return to help with the organization.

During the course of her visit she discussed some of the more recent trends in cancer research.

The American Cancer Society is fully engaged in the struggle against leukemia. Current grants represent an expenditure of nearly \$400,000, a level of support exceeded only by appropriation of the Federal government. This research on leukemia is concerned with all aspects of the disease—its cause, its course, its cure. Moreover, because of the evidence suggesting a virus relation to leukemia, it is pertinent to note that the Society is supporting some 40 grants in the virus research field, which represent an expenditure of about \$1,205,000.

The American Cancer Society is well aware that the rise in the leukemia death rate in 25 years has been exceeded only by that of lung cancer. The percent increase in reported death rates standardized for age for males for 1955 compared to 1930 was 192 percent, which is second to lung cancer's 647 percent. In females, however, leukemia has increased faster in reported death rates than any site: 172 percent since 1930, as compared with 112 percent for lung cancer. There were an estimated 11,310 leukemia deaths in the U. S. in 1956, a rate per 100,000 population of 6.8. Leukemia accounts for about 4.5 percent of all deaths.

Additional Funds To Be Available

Brunswick County ASC Office, Receives Definite Word That Funds Will Be Available For Applicants On List

FARMERS MUST ACT IMMEDIATELY

Action Results From Additional \$250,000,000 To Soil Bank Program After First Funds Were Exhausted

A \$250,000,000 supplemental appropriation for the Soil Bank's acreage reserve program, has opened up the possibility for all farmers who were placed on the waiting list to be included in the 1958 program.

This is according to an announcement by Lonnie Evans, county chairman of the Agricultural Stabilization and Conservation committee.

Generally speaking, the only farmers who will now be able to participate in this program are those who visited the ASC Office and had their names placed on the register prior to the sign-up deadline. The sign-up deadline on cotton and corn was February 20, and the deadline on tobacco was March 7.

According to Mr. Evans there are a few farmers in the County whose names are not actually on the register who might be permitted to take part in this program at this time. In these cases there are definite conditions that must be met in order for the farmer to be eligible. The farm operator must file with the county committee a certificate setting forth that he took positive action in an attempt to participate, and showing that this action was taken after the opening of the sign-up period, and not later than the applicable closing date.

Another requirement is that this certification be received in the county office not later than April 18. The final condition on acceptance of requests not timely filed is that funds be available in the county allocation to cover the agreement after all farmers

(Continued On Page Four)

Oyster Planting Begins In County

Forty Percent More Oysters Will Be Planted In Brunswick County Waters This Season

Gehrmann Holland, fisheries commissioner for North Carolina, reported Monday that the work of planting 25,000 tubs of seed oysters in the waters of Brunswick county began that day. This is a 40-percent increase over what was planted last year.

A tub represents 5 pecks. Local labor is being used for this work, which includes gathering small oysters, breaking them singly on bottoms where conditions are favorable for their development. Helpers are paid at the rate of 25-cents per tub for this planting operation. Preference is given to those who have purchased commercial license for the operation of their boats.

The work started near the South Carolina line and will progress toward the Cape Fear area, with Lockwoods Folly being the terminal point.

Supply Citizens Form Community Betterment Unit

Nominating Committee For New Group Is Headed By J. J. Hawes; To Make Report At Next Meeting

JULIAN A. GLAZENER ATTENDED MEETING

Extension Specialist Made Talk On Benefit Of This Type Of Organization And Showed Slides

A group of the Supply citizens met again Friday night at the Brunswick County Farm Office to further organize the community development program. The meeting was opened with a prayer by A. S. Knowles, county agent, who in turn introduced Julian A. Glazener, extension program planning specialist from N. C. State College. Mr. Glazener spoke on community development and showed slides to further explain this program.

The group agreed to organize and a nominating committee consisting of J. J. Hawes, chairman, R. D. Clemmons, Mrs. Rifton Sellers and Mrs. Fred Parker were appointed to elect a slate of officers to be voted on by the group. Another meeting will be held in the near future to elect officers. At the close of the meeting

(Continued On Page Four)

Shallotte Lions Hear Nurse Talk

Miss Annie Lou Davis Discusses Operations Of Brunswick County Health Department

Highlight of the Shallotte Lions Club meeting of March 20 in the Shallotte School Cafeteria was a discussion of the public health program in Brunswick County by Miss Annie Lou Davis, senior public health nurse. Chick Taylor, program chairman, introduced the speaker.

"The Brunswick County Health Department is considered new when we compare it to many others in the State," said Miss Davis. "It was started just 8 years ago. New Hanover for instance, was started in 1879. For a department as new as Brunswick's, much progress has been made that we can feel proud of. Most of the services found in any of the other departments are available here."

"While we do not have a laboratory," she continued, "we can use the laboratory services of the State Board of Health, and New Hanover County offers further laboratory services, as well as, X-ray services. We must not feel complacent at this time. We have a long way to go yet."

"Our consultants at the State Board of Health feel that our biggest problems are environmental sanitation and our high infant death rate, and that these two are directly connected. It is believed there is much that can be done about both of these."

"In 1956 Brunswick County had the highest infant death rate in this state. It was double that of

(Continued On Page Two)

English Mayor



VISITOR—Mrs. Mae Bamber, shown here in conversation with Hubert Livingston while a visitor in Southport several years ago, arrived at the airport in Wilmington this afternoon for another visit to this community. She is mayor of Southport, England, and has maintained contact with friends in this area since her previous trip to the United States. She will be guest of honor at a reception this evening at the Community Building. She returns to New York tomorrow.

Fishermen To Get Training Courses

Name New Ship For Long Beach

Long Beach on the Atlantic coast, as well as Long Beach, California has a namesake. It is the Navy's first nuclear powered surface ship scheduled to be delivered in 1960.

The record says she will exceed 700 feet in length and will displace some 14,000 tons, and will have virtually unlimited high-speed cruising radius without the need of frequent refueling.

As a sequel to the U. S. S. Nautilus, first atomic powered submarine, the Long Beach sets a precedent in surface vessel achievement.

Edward Ludke of the U. S. Office of Education in Washington, D. C., was in Southport Thursday evening to explain a program of vocational training for men engaged in the various phases of the fishing industry and offered, through the State Department of Public Instruction and the Brunswick County Board of Education, to set up one of the training programs here.

Also at this meeting were T. Carl Brown, supervisor in the division of vocational education, and A. Wade Martin, assistant in the Department of Labor in Raleigh.

These three men met at the city hall with the mayor, members

Members of the Advisory Council met Monday evening and completed plans for a course in net mending. This will be 3-hour classes to be held twice each week and will be conducted by a qualified instructor at the Dallas Figgott Seafood House. The first session will be held Friday, April 11 at 1:30 p. m.

of the board of aldermen, representatives of the board of education, representatives from the local high school and a group of interested citizens who wanted to learn as much as possible about the program.

Mr. Ludke, Mr. Brown and Mr. Martin explained that this represents an effort on the part of the federal government to provide trade training of fishermen in much the same manner that training programs are maintained for the various trades and industries and for agriculture. "The fishing industry long has been neglected in vocational work," said Mr. Ludke, "and since this is such an important source of our national food supply, Congress last July made funds available for a training program for fishermen." He went on to explain that the purpose of this plan is to give

Revival Services Begin In County Starting Sunday

Part Of Simultaneous Revival Program Being Conducted By Churches Of Brunswick Baptist Association

LEADING MINISTERS ARE PARTICIPATING

Sixteen Church In Brunswick Will Have Services In Progress During This Period

"You Can Know Him Now" is the theme of the simultaneous Revival Services which will be held by the churches in the Brunswick Baptist Association during the month of April. Sixteen churches have chosen the week of April 6-13 for this united effort, and four other churches will be having services during the preceding or following weeks.

Those churches joining together for this crusade are Leland, Elah, Goshen, Farmers' Chapel, Antioch, Supply, Mill Creek, Southport, Mt. Pisgah, Prospect, Gospel Center, New Life, Town Creek, Boone's Neck, Friendship, Bowden Memorial, Lebanon, Bolivia, Sabbath Home, and Mt. Olive. Each church will announce its plans locally for its services.

This campaign has been planned and promoted by the Brunswick Baptist Association's Evangelistic Steering Committee, Avery Lumsden chairman. Other members of the committee are: Chairman of Church Enlistment, Mrs. Margaret McRacken; Chairman of Finance, C. G. Hammonds; Chairman of Publicity, Mrs. Catherine Skipper; Chairman of Radio and Television, Rev. Paul Hardy; Chairman of Fellowship, Rev. Fred Johnson; Chairman of Census, Rev. Luther Hawkins; Chairman of Prayer, Mrs. Cora Frink; Chairman of Music, Rev. Avery Lumsden, Chairman of Attendance, Rev. Leo Hawkins; Chairman of Visitation, Rev. W. T. Lundy; Rev. J. D. Hales, Jr., moderator of the association, has also assisted in preparing for this crusade.

A Crusade rally is scheduled for 2:30 Sunday afternoon at the Supply Baptist Church. There will be a program of special music by Mill Creek and Mt. Pisgah Church Choirs and an inspirational message.

Seeks Increase In Conservation

Letter To Director Of Department Of Conservation And Development Asks That More Oysters Be Planted

Southport attorney S. E. Frink on Monday wrote a letter to William P. Saunders, director of the Department of Conservation and Development in Raleigh, asking that "some positive effort and action be taken to promote the planting and growth of oysters" in Brunswick county waters.

Text of this letter follows: "I am very much interested in promoting the planting and growing of oysters in the sounds of Brunswick County. As you know, the oysters in the sounds of Brunswick County are almost extinct and that some positive effort and action must be taken to promote the planting and growth

(Continued On Page Four)

Tide Table

Following is the tide table for Southport during the next week. These hours are approximately correct and were furnished The State Port Pilot through the courtesy of the Cape Fear Pilot's Association.

High Tide	Low Tide
Thursday, April 3,	
6:55 A. M.	1:02 A. M.
7:27 P. M.	1:22 P. M.
Friday, April 4,	
7:48 A. M.	1:55 A. M.
8:20 P. M.	2:11 P. M.
Saturday, April 5,	
8:40 A. M.	2:46 A. M.
9:12 P. M.	3:00 P. M.
Sunday, April 6,	
9:31 A. M.	3:38 A. M.
10:05 P. M.	3:48 P. M.
Monday, April 7,	
10:24 A. M.	4:29 A. M.
10:59 P. M.	4:39 P. M.
Tuesday, April 8,	
11:19 A. M.	5:22 A. M.
11:55 P. M.	5:32 P. M.
Wednesday, April 9,	
12:16 A. M.	6:18 A. M.
0:00 P. M.	6:28 P. M.

TIME and TIDE

By JIMMIE HARPER

It was April 6, 1938, and, according to a headline, the political pot was now at the 'simmering' stage. There was much speculation as to what might develop in the race for sheriff; four candidates had announced their candidacy already. Capt. Hulan Watts, with his E. M. Lewis, had made the first bluefish catch of the season; the grounds of the Southport Episcopal and Methodist churches had been beautified with plants donated by J. L. Sprunt; and in a triangular debate, the Southport High School negative representatives (John Hall and Edward Taylor) had defeated the Chadbourne team.

In a rather informal front page news story, The Pilot that week presented an anecdote, concerning two regular attenders of the Methodist Sunday School—Jack Christian and his dog, Pal. Our editorial writer had noticed the profusion of bootblacks with some alarm, and had offered some suggestions on how to control the "industry"; oranges cost 15 cents a dozen, men's shoes were \$1 a pair, and a subscription to The Pilot cost \$1.50.

It was April 7, 1943, and somehow the county had finally reached its quota for the current Red Cross drive. A large portion—over \$1300.00, in fact—of the contributions had come from Shallotte High School. Miss Annie May Woodside had been elected as county school superintendent; more county farmers were getting REA service; and Russell Johnson had reported the birth of a 118 pound calf at his Winnabow dairy.

Citizens of the Antioch community had begun work on a new brick church; Wesley and James Johnson, attached to an Army unit in the Canal Zone, were home on furlough; and a maximum speed limit of 35-mph was being rigidly enforced. Spring was in the air, the tennis bug had bitten local court fans, and the clay

(Continued On Page Four)