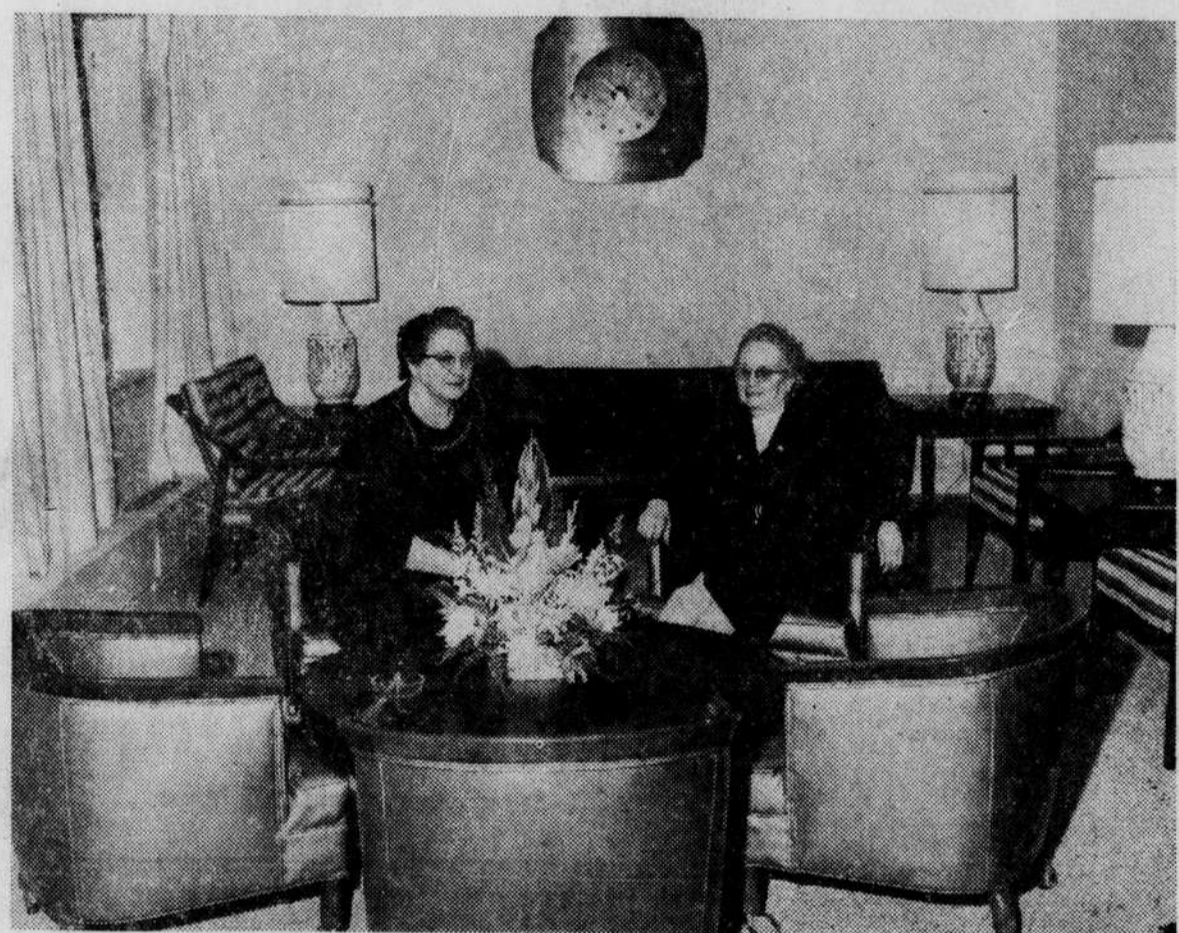


Inspect Hospital



VISITORS—Mrs. Margaret C. McCracken, left, and Mrs. E. H. Smith, both of Southport, are shown in the main lobby of the new Progressive Care Center of Baptist Hospital at Winston-Salem. Miss Annie Mae Woodside, who accompanied them, was not present when the picture was made.

Distribution Of Surplus Foods Being Planned

Operation In Brunswick Will Be Responsibility Of Welfare Department

Plans are now underway for the distribution of surplus foods in Brunswick County, and Kenneth Hewett will supervise the distribution of these commodities. Certification of need will be the responsibility of the Department of Public Welfare.

In order to determine eligibility for this program, applications will be accepted three days a month from three different points to accommodate the different areas. Residents of Ash, Longwood, Freeland, Shallotte and Supply should make application on Friday, April 14, at the Shallotte Health Center and afterward applications will be accepted on the second Friday in each month.

Residents of Waccamaw, Bolivia and Southport should make applications on the third Monday, April 17, in the Welfare Department at Southport and on the third Monday in each month thereafter.

Residents of Leland, Navassa and North West Township should make applications on Friday, April 21, at the post office in Leland and after that application will be accepted on the third Friday in each month.

Anyone wishing to apply for food should have with them names of all the members of the family, their ages and the amount of income of all members of the family. Applications cannot be completed without the proper information and the head of the family is the one to apply.

The food will be distributed from the agriculture building at Supply and the public will be informed later of the days for distribution for the different areas.

Persons now on welfare roles for Old Age Assistance, Aid to Good Friday services at St. Philip's, Partially Disabled and Aid to the Blind need not apply as plans already are being made to serve their needs.

Boiling Spring Street Paved

Preparation Being Made To Qualify For FHA Loans For Building In Area

A building area is being prepared at Boiling Spring Lakes with all facilities to comply with FHA requirements, Harold Greene, sales manager for this development said this week.

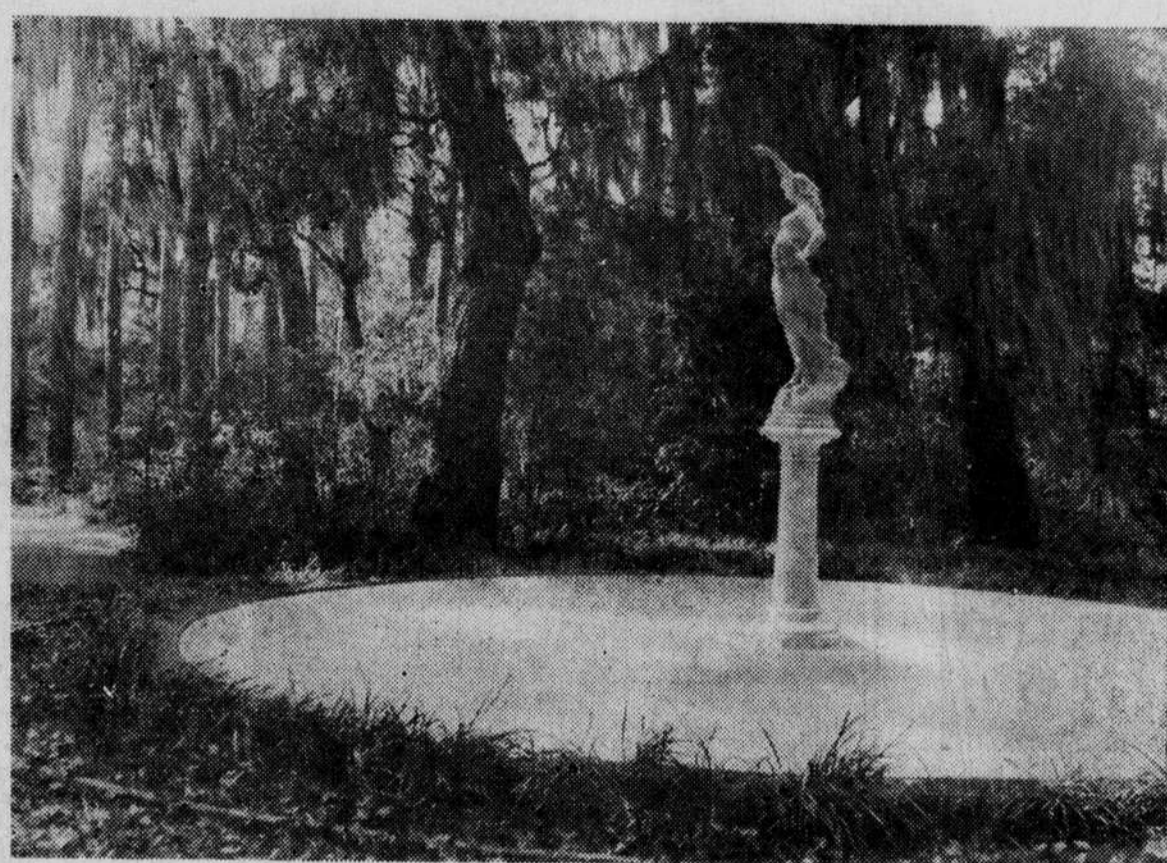
Greene said that paved streets are being laid, city water is being provided with an 8-inch water main and fire hydrants. There also are street lights.

Building lots are 70 x 150-feet, and persons who own lots in other sections may trade for one in this section if they are ready to begin construction immediately.

This is being done in an effort to accelerate the building program, and last week Greene met

Continued On Page 4

Scene At Orton



BEAUTY—One of the most beautiful scenes at Orton Plantation is this white garden, with the pieces of statuary as a centerpiece. This Brunswick County showplace is expected to be at the peak of its beauty during the next ten days.

Historic Homes And Gardens To Be On Schedule

Woodbine Garden Club Of Southport Is Sponsoring This Tour For First Time On Sunday, April 9

Visitors to Southport who are inclined to think of it only in terms of fishing, boating and beaches, are in for some surprises if they take the Home & Garden Tour to be held on Sunday, April 9, from 12:30 to 5:30 p. m.

Among the surprises in store are church altar linens older than the United States of America; fans that once belonged to Marie Antoinette and Empress Eugenie; an authentic Colonial fireplace with baking oven; an Indian Trail tree marking the Indian's route to the coast for their annual salt-gathering; and a completely modern contemporary waterfront home.

The tour, being sponsored by the Woodbine Garden Club, is a concerted effort of townspeople to encourage visitors to stop, look and learn about historic old Southport rather than rushing frantically through it to the nearest fishing grounds or beach. Southport (then Smithville) was incorporated in 1792 and was an established community long before that date. It has been under five flags, and while out-of-towners are prone to call it "quaint" Southporters, themselves, know that the town is just "settled"—it has been here for a long time and will be for a long time to come! In addition to the Home and Garden Tour itself, there will be an outdoor Art Show by the Southport Artists Association and a plant sale. Tickets may be purchased for the entire tour, or for individual homes or gardens.

Included in the tour are: Home of Colonel and Mrs. Earl I. Brown; Indian Trail tree in garden of Mrs. Edward H. Cranmer; "Garrison House," residence of

Continued On Page 4

Southport Ladies Are Visitors In Winston - Salem

The Local Ladies Impressed With Facilities Of Baptist Hospital During Recent Inspection Trip

Three prominent Baptist women of Southport were recent guests of Baptist Hospital in Winston-Salem for a preview of its new Progressive Care Center prior to its opening for patients. They were Mrs. Margaret C. McCracken, associational missionary for the Brunswick Baptist Association, Mrs. E. H. Smith, associational hospital representative, and Miss Annie Mae Woodside.

In addition to visiting the Center, they participated in a meeting held to make plans for the Mother's Day offering, which is contributed by Baptists of North Carolina to help support the care of the needy sick at the Hospital. Forty percent of its work is for patients who must have financial aid.

The Center consists of 80 patient rooms and auxiliary facilities. It is designed for those who come to the Hospital for diagnosis and for patients who are con-

Continued On Page 4

Introduces Bill For Development

Under Provisions Of Bill Introduced Last Week By Representative Frink Another Development Tax Vote Will Be Held

Brunswick county citizens may have another opportunity to vote on the question of levying a development tax if a bill introduced last week by Representative S. Bunn Frink becomes law.

Following are some of the provisions: "To authorize the Board of County Commissioners of Brunswick County to call a special election for the authorization of a resources development tax for Brunswick County and to create and fix the powers of a Resources Development Commission for Brunswick County."

Requires board of commissioners to call special election, upon petition of 500 qualified voters of county, within 60 days after filing of petition, to determine whether voters wish commissioners to levy and collect annual Resources Development Tax not to exceed 10c per \$100 valuation, funds, from tax to be used to attract new and diversified industries to county, for the processing of agriculture and seafood products, and to encourage business, industry, tourist trade, and development of recreational areas.

No new registration of voters is to be held. Sets out details of registration of new voters, and requires notice of such registration to be published in newspaper circulated in county at least 30 days and not more than 40 days before closing of books. Commissioners shall fix date of election, to be conducted between hours of 7 a. m. and 7 p. m. under control of county board of elections. Prescribes form of ballot and procedure for counting and canvassing vote.

If vote is unfavorable, new election may be held not earlier than one year thereafter and only upon petition of 1000 voters. If vote is favorable, commissioners may levy tax, and may reduce or increase the rate (not to exceed 10c) upon recommendation of 2/3 of Resources Development Commission.

Resources Development Commission to consist of 9 bi-partisan members to be named by county commissioners, one from each of Northwest, Town Creek, Smithville, Lockwoods Folly, Shallotte, and Waccamaw Townships, and three from county at large. Members to serve 3-year staggered terms, with first board appointed 3 for 1 year, and 3 for 2 years. Commission to meet within 30 days after appointment and elect chairman, vice-chairman, secretary and treasurer, and draw up bylaws. Treasurer to furnish bond as required by county commissioners. Funds may not be invested in stock or capital assets of any business or industry. Development Commission shall supervise bureau to promote purposes of commission, and may

Continued On Page 4

Franklin Park Motel Is Sold

The Franklin Park Motel in Southport has been purchased by Mrs. Annie Rose Raybourne from Mrs. Bennett.

Mrs. Raybourne is a native of Southport and is the daughter of the late Mr. and Mrs. Ernest Burris.

The Franklin Park is the first of three motels erected in Southport and was built several years ago by the late Sam T. Bennett and Mrs. Bennett, who has continued its operation following the death of her husband. Mrs. Raybourne also purchased the Bennett home next door.

Fishing Ponds Produce Food

Soil Conservationist Says That Good Returns Come From Fertilizing Pond Areas

Fertilizing a fish pond to make the fish grow may sound odd, but the Soil Conservation Service reports that it works.

According to H. F. Kizer, Brunswick County Conservationist, more than 40,000 ponds have been built in this state as part of basic conservation plans developed by landowners in cooperation with Soil Conservation Districts. These ponds offer a tremendous potential in fish production. When a pond has a desirable balance between the bass and bluegills and is properly fertilized, between 100 to 300 pounds of fish per acre can be produced annually. The average annual catch on such a pond runs between 150 and 170 pounds per acre.

This is how fertilization of a fish pond works: A farmer spreads a chemical fertilizer such as 8-8-2 or 20-20-5 over the shallow parts of his pond. This is the first step in the "food chain."

The elements in this fertilizer are used directly by microorganisms in the water known as plankton. These are tiny plants and animals that, where present, give fertile water its greenish color.

The plankton provides food for aquatic insects such as stoneflies, Mayflies, dragonflies, caddisflies, and water beetles. The more plankton in a pond, the more food there will be available for insects, and consequently, the more insects the pond can support.

Continued On Page 4

Work Started On First Golf Course

Area Fronting On Atlantic Ocean And Part Of Yaupon Beach Property Is Site Of Links And Proposed Club House

Lt. Col. Johnnie D. Duffie is author of a magazine article which appeared in the current issue of "Transportation", a nationally circulated publication sponsored by the National Defense Transportation Association.

The title is "Sunny Point Army Terminal Provides Unique Transportation Function", and it is the lead article in this publication.

The text tells of the planning that went into the selection of the site and in providing safety factors of the nearby terminal, which was designed to be the most modern facility of its kind in the world.

Red Cross Drive Still Underway

Active Fund-Raising Effort Being Conducted In Various Communities In Brunswick

Hubert Bellamy of Southport is heading the Red Cross Fund Drive in Brunswick county this year and active solicitation already is underway.

The following persons have been named to serve as chairmen in

Continued On Page 5

Flower Lovers Due For Treat In Coming Days

Orton Plantation Gardens Will Be Center Of Interest For Thousands Of Persons During Next Two Weeks

A magnificent display of azaleas throughout Brunswick county is expected Easter weekend.

"Already, the flowers are beginning to bloom and by next weekend they should reach a peak," said Alex Bogie, manager of Orton Plantation.

Bogie, a veteran of more than 25 years of flower growing, anticipates one of the best displays of Azaleas ever. "The conditions are just right for an excellent show of azaleas," he said.

At Orton, site of one of the most colorful flower displays in the nation, the blooming of the azaleas will climax an exciting show of spring flowers.

"Once the azaleas reach full bloom, we will have a peak display for three weeks or more," Bogie said.

He pointed out that in the past, some of the azaleas have bloomed before others. "But this year it looks as if the azaleas are all going to pop out about the same time," he said. "For this reason I expect one of the finest displays in 25 years."

During the past week the pantries and daffodils have been a riot of color. The white flowering peach is in full bloom, and the pink peach is beginning to blossom. The incorporators are D. C. Herring, Ray H. Walton and Ernest E. Parker, Jr.

As spokesman for the group, Herring said this week that the project has been in the planning stage since last fall, with much of the intervening time being spent in completing plans for the golf course and for the residential subdivision surrounding the area.

Herring said that the 160-acre site for the golf course is being

Continued On Page 5

Cancer Forces Name Committee

County - Wide Organization Ready To Make Annual Solicitation Of Funds During April

Committee members have been named to represent their areas in the Brunswick County Cancer Crusade, which begins next week. "Everyone is urged to contribute to this worthy cause during the month of April," William Smith, Southport Attorney and Chairman of the drive, said this week.

The following committee members have been named: Mrs. I. D. Butler, Mrs. James Thompson, Mrs. Lloyd Bordeaux, Mrs. Helen Best, Mrs. Dick Sanders, Miss Lin-Saunders, Winnabow, Mrs. A. P. Henry, Jr., Miss Helen Taylor; Bolivia, Mrs. Foster Mintz, Mrs. Dorothy Brittain, Mrs. Ruby Jacobs; Southport, Mrs. Johnnie Duffie, Mrs. Robert Thompson; Caswell Beach, Mrs. Jan Eaton; Long Beach, Mrs. Dan Shannon; Tran-

Continued On Page 4

Gause Is Elected Jaycee President

Organization At Shallotte Holds Annual Election Of Officers Wednesday Evening

David Gause, a charter member of the Shallotte Junior Chamber of Commerce, was elected president of that organization at a meeting last Wednesday evening. He succeeded J. T. Clemmons, who becomes State Director.

Billy Gunganus was elected vice-president; Sam Inman was elected secretary; and L. B. Cheers was elected treasurer. The two directors are Harry White and R. C. Arnold.

Among other business discussed was that of chartering a Junior Chamber of Commerce chapter in Southport, with arrangements being made to hold a meeting on Friday night, at which time Al Sharpe of Lumberton state president, would be present.

Brief Bits Of NEWS

BENEFIT FISH FRY
The Winnabow volunteer Fire Department will hold a fish fry at the fire house Friday, beginning at 6:30 p. m. The public is invited.

JAYCEE PRESIDENT HERE
Al Sharpe of Lumberton, State president of the Junior Chamber of Commerce, and Everett Henry, also of Lumberton, were visitors here Friday night.

PRE-SCHOOL CLINICS
Pre-school clinics will be held by representatives of the Brunswick County Health Department on Friday, April 7, at Union High School; and on April 11 at Southport High School.

EASTER CANTATA
Members of the choir of Southport Baptist Church will present an Easter Cantata, "Our Risen Lord" at 7:30 o'clock Sunday evening, Mrs. A. E. Huntley is the director. The public is invited.

SUNRISE SERVICE
An Easter Sunrise Service, sponsored by the Supply Community Development Club, will be held Sunday morning at 5:45 at Supply Baptist Church. Choir members of each of the five cooperating churches will bring music for this occasion and the sermon will be by the Rev. Fletcher Edens of Mt. Pisgah Baptist Church. Pastors of other participating churches will assist with the program.

TIME and TIDE

There was a front page picture of Baxter Durham in The Pilot for April 1, 1936, and with it was the announcement that he was a candidate for re-election as State Auditor. A 100-ft. fire tower was being constructed at Maco as an aid to the forestry program in Brunswick.

The Southport Building & Loan (Savings & Loan) had observed its 25th anniversary; a Southport girl had been elected maid of honor in the May Court at Greensboro College; and Judge R. Hunt Parker was coming to hold court the following week.

One of our all-time favorite Pilot photos was on our front page back in April, 1941. It showed the youthful horseman, Brother Christian, and Cherry McDonald, pretty sorrel mare owned by Dr. and Mrs. L. C. Fergus, and it told of the workouts the boy and his mount were taking daily in preparation for the forthcoming Cape Fear Horse Show in Wilmington. Four negroes lost their lives when the automobile in which they were riding plunged into the waters of Sturgeon Creek near Leland.

There was a picture, too, of the chapel at Orton Plantation; more REA lines were soon to be energized in Brunswick; and that was the week that there was a front-page business announcement that we had purchased one-half interest in this newspaper.

Here it was the last week in March, and the Brunswick county basketball championship had just been settled. The winners were the Bolivia girls and the Leland boys. The Red Cross quota for Brunswick still had not been reached.

This was back in 1946, and the date was March 27. Orton Plantation was at the peak of its beauty, and Governor

Continued On Page 4

Tide Table

Following is the tide table for Southport during the next week. These hours are approximately correct and were furnished The State Port Pilot through the courtesy of the Cape Fear Pilot's Association.

High Tide	Low Tide
Thursday, March 30.	
6:28 A. M.	0:39 A. M.
6:58 P. M.	1:01 P. M.
Friday, March 31.	
7:06 A. M.	1:21 A. M.
7:35 P. M.	1:39 P. M.
Saturday, April 1.	
7:46 A. M.	2:03 A. M.
8:12 P. M.	2:16 P. M.
Sunday, April 2.	
8:23 A. M.	2:43 A. M.
8:49 P. M.	2:54 P. M.
Monday, April 3.	
9:01 A. M.	3:25 A. M.
9:29 P. M.	3:32 P. M.
Tuesday, April 4.	
9:55 A. M.	4:09 A. M.
10:14 P. M.	4:01 P. M.
Wednesday, April 5.	
10:28 A. M.	4:55 A. M.
11:04 P. M.	4:59 P. M.