

Hallsboro Slates First Holiday Invitational Cage Bill, December 28-29

Whiteville, Hallsboro And Southport Have Entered

By JIGGS POWERS

HALLSBORO—Plans are in the making for the First Annual Columbus Holiday Invitational Basketball Doubleheader, to be played at the Hallsboro High School gymnasium on Thursday and Friday nights, Dec. 28-29. Only boys' teams will be involved. Tentative plans for the big Yuletide holiday cage program would pit Whiteville's Wolfpack and Hallsboro's Tigers, as the host teams, against Southport's Dolphins and a fourth club, Floyds, S. C.

Mack Edwards, coach of the Hallsboro Tigers, is the man who is spearheading the move to bring Columbus County its first big basketball program during the Christmas holiday period.

Edwards is the originator of the Currutuck Holiday Doubleheader that has become such a success in that area. He established this program while coaching at that school last Christmas and it has grown this year from last year's four-high-school-team program until the one this year, which will consist of two afternoon and two night games both days; with both high schools and junior colleges competing.

Edwards said that Whiteville's Coach Buck Jolly and Coach Pete Lee of Southport had already accepted the invitation and that it is now a sure thing that Floyds would accept.

Coach Edwards said that he felt the program would be welcomed by the sports-loving public of Northeastern South Carolina and that of Southeastern North Carolina.

"There'll be no Dixie Classic for basketball fans to attend this year," he said. "So, I believe many of them would like to stay at home and see their own boys play. It will give the college students someplace to meet during the holidays, too."

CARD OF THANKS

We wish to take this opportunity to thank our relatives and friends in Southport for their many acts of kindness and sympathy to us in the recent death of our dear husband and father. Mrs. M. Dewey Smith & Mrs. W. S. Holland

Watch Your Label!

Cage Pairings

HALLSBORO — Director Mack Edwards today released the following pairings for play in the First Columbus Holiday Invitational Doubleheader here, next Thursday and Friday:

DECEMBER 28
7:00 p. m.—Hallsboro-Southport.
8:30 p. m.—Whiteville-Floyd's.
DECEMBER 29
7:00 p. m.—Whiteville-Southport.
8:30 p. m.—Hallsboro-Floyd's.

Pirates Defeat Waccamaw Two

ASH—Shallotte's Pirate cage teams rolled over the Eagle crews of Waccamaw High School twice, here, Friday night. The Lady Bucs, paced by Judy Golden's fine shooting, took a 53-29 win; while Robert Galloway hit often to lead the Pirate boys to an 87-44 win over the Eagle five.

Judy Golden tallied 44 points, getting all except 9 of her Buc crew's total in their win over the Eaglettes. Galloway hit for 35 points.

Jim Russ with 15 and Danny Stanley with 12 also hit in the double figures for Shallotte's boys. Stanley also turned in a good rebound game for the winning quint, which now has a 4-0 record.

Waccamaw's leaders included Mary King, with 23 of her Eaglette team's 29 points; Vernon King with 20 points, Earl Hughes and Lyle King each with 10 points for the Eagle boys.

Read The Want Ads

Fonvielle, Williams Named To All-East AA Grid Team

RALEIGH—Tabor City's Red Devils, runner-up to Elizabethtown's Waccamaw Athletic Association football champion Yellow Jackets, placed a pair of its stars on The Raleigh News and Observer's 1961 All-East Class AA Football Teams, while the champs placed but one.

Joe Tiede, of the N&O sports staff, announced the All-East Double-A selection here, Sunday, which included first and second teams, and a number of honorable mentions.

Leon Edward Fonvielle, fleet-footed, 170-pound halfback, and Big Sammy Williams, burly 215-pound tackle, were the Tabor City aces on the All-East. Bud Fisher, ace bread-and-butter fullback of Coach Charlie Regan's ETown champs, a 180-pounder, was named as the center.

Three other WAA stars, including two from Elizabethtown and one from Chadburn won second-team positions. Dick Crutchfield, 185-pound end, was Chadburn's nominee; while Guard Pat Jessup, 195-pounder, and Quarterback Eddie Smith, 175, won second-team places for ETown.

Getting honorable mention from the Waccamaw loop were End Mac Campbell of Elizabethtown; Tackles Kenneth Gooden and Frank Lai, both of ETown; Guards Alex Gooden of ETown and Jerry Soles of Tabor City; and Back Howard Benton of Shallotte.

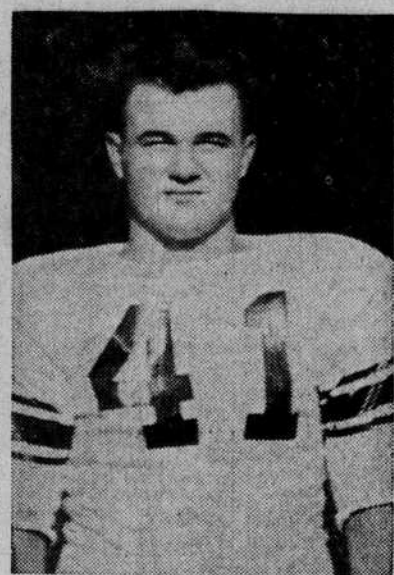
Of the WAA stars, Joe Tiede had this to say:

FISHER—"Named as first team center was rugged Bud Fisher of Elizabethtown, who played full-back on offense and end on defense. Elizabethtown's Fisher, a 5-6, 180-pounder, was the top ground-gainer for the conference champions. He also was a stand-out defensively, and for that reason was named at the center position."

FONVIELLE—"Tabor City's Fonvielle, impressed Waccamaw Coaches with his running ability. . . 'One of the best in this section, college material,' said Frank Thompson, former Wake Forest tackle now coach at Bladenboro. . . Another former Deacon,



LEON FONVIELLE



SAMMY WILLIAMS

Whiteville's Buck Jolly, cited Fonvielle's 'great drive and broken field running'. . . 'Very fast and deceptive,' said Jiggs Powers of The Whiteville News-Reporter."

WILLIAMS—"Tabor City tackle Williams, at 215 the biggest boy on the two teams, led the all-star voting in the Waccamaw Athletic Association. Only a junior, he led Coach Berny Stevens' tough defense and also excelled as a blocker."

Tiede noted that Eddie Smith of Elizabethtown, was "the second team player who came closest to making the first team. A versatile player who can run and throw very well, Smith was mentioned for his ball-handling, faking and field-generalship."

Here are the two All-East Teams: **FIRST TEAM**—Ends Rufin Odom, Ahsoskie and Richard Austin, Cary; Tackles Chuck Sledge, Morehead City and Sammy Williams, Tabor City; Guards Dick Barnhill, Apex and Bill Harris, Beaufort; Center Bud Fisher, Elizabethtown; Backs David O'Neal Morehead City, Carroll Forehand, Edenton, Leon Fonvielle, Tabor City, Earl Capps, Ahsoskie, Bobby Brannon, Gary. **SECOND TEAM**—Ends Lynnwood Rogerson, Williamston and Dickie Crutchfield, Chadburn;

Poor Shooting Hurts Ap Mark

By "SMUT" JONES
BOONE—A poor shooting percentage from the floor and loose ball handling are largely responsible for the Appalachian State Mountaineers' poor start on the hardwood this season.

Coach Bob Light's charges have won only one of four games, that being a 66-62 decision over Pfeiffer. The losses came at the hands of Guilford, East Tennessee State and Belmont Abbey.

In the four games, the Apps fired at the basket 261 times, hitting on only 92 for a 35.3 per cent accuracy mark. That isn't the kind of shooting that wins many ball games.

Poor ball handling and passing played a large part in the one-point loss to Guilford and that phase of the game must also be improved.

Two bright spots in an otherwise gloomy picture are freshman Wayne Duncan and sophomore Jim Richardson. Duncan, from Danville, Va., has hauled down 51 rebounds while scoring 49 points in the four games. His best effort came against Pfeiffer when he speared 18 rebounds and collected 16 points.

Richardson, a 6-4 lad from North Wilkesboro, has 43 rebounds to his credit and is the team's leading scorer with 60 points. Richardson has sunk 41 per cent of its shots from the floor while canning 12 of 14 free throws.

Doug Wall, soph guard from Winston-Salem, owns the best eye for the basket thus far. The six-foot guard has hit on 15 to 34 shots for an accuracy figure of 44 per cent.

Dove Season

The final half of the split dove season is now a week old, having begun on Dec. 13. It will continue through Jan. 15, 1962.

Bag limits on doves are 12 daily; 24 possession.

PONTIAC TEMPEST

GMC Trucks



COMPLETE BODY & PAINT DEPARTMENT

Factory Trained MECHANICS

LEWIS GODWIN—SOUTHPORT REPRESENTATIVE

Harris Pontiac, Inc.

311 N. 2nd St. Wilmington, N. C. RO 3-8231

READ THE WANT ADS.



RHODE ISLAND

Rhode Island is the smallest of the states, but has never taken a back seat in sturdy independence. Providence the Capital city was founded in 1636 by Roger Williams, who as banished from Massachusetts, "for God's merciful providence unto me in my distress." Atop the dome of the State House is a bronze statue which represents the "Independent Man." Paintings in the State House include a full-length Gilbert Stuart portrait of Washington. The building is open from 9:00 to 2:30 to visitors.

MAY WE SUGGEST THAT YOU MAKE A NOTE OF THE MANY ADVANTAGES ELECTRICITY OFFERS. WHAT EXTRA ELECTRICAL HELPERS DO YOU NEED? THE COST IS LOW. ELECTRICAL APPLIANCES MAKE IDEAL GIFTS FOR CHRISTMAS.

Compliments Of

BRUNSWICK ELECTRIC MEMBERSHIP CORPORATION

SERVING BRUNSWICK, COLUMBUS, ROBESON and BLADEN COUNTIES



"Community Owned . . . Community Built . . . Community Builders"

* Students—Clip this Ad for your scrapbook.



"and please beshure the mailman brings me mi Santa Claus Lettsr"



The wonders of Santa Claus never cease for little girls and boys and long after the tinsel, the bells and the twinkling lights have been safely packed away for yet another year they will cherish the memory of the letter from Santa Claus.

Everyone who ever believed in Santa Claus will want to send one of these four colorful messages to their favorite child. Select, address, stamp and mail it in our special mail box. We will have it postmarked from Santa Claus, Indiana and it will be delivered direct to the child with our sincerest compliments.

Stop in today, it only takes a minute!!



WACCAMAW

Bank & Trust Company



MEMBER FEDERAL DEPOSIT INSURANCE CORPORATION

4 BIG DIVIDENDS PLUS 3% INTEREST

- 1. No Waiting Period** Your savings at Waccamaw starts earning immediately.
- 2. 30 Bonus Days out of Every 90** Deposits made by the 10th of each month earn from the 1st. Interest is paid quarterly.
- 3. Withdrawals without Penalty** You may make withdrawals at Waccamaw at anytime without loss of interest on remaining balance.
- 4. Wac-o-matic Savings Plan** With Waccamaw's popular savings plan, you simply say how much you'd like to save each month.

3% Daily Interest 3%