

Sub-Junior Club Organized Here

The Southport sub-junior woman's club held its first installation Monday night at the community building.

A covered dish supper was served by the mothers of the members and the following officers were installed by Mrs. James M. Harper, Jr. trustee of the North Carolina federation of woman's clubs:

Suzan Key, president; Sandy Potter, vice-president; Ann Cammack, secretary; Martha Harrelson, treasurer; Pat Caster, points secretary.

Community Club Hears Hal Reeves

The development club members of the Funston and Mill Creek area are trying to promote the building of a club house.

Woman's Club

The Southport Womens Club held its May meeting at the Community Building.

Want Ads Get Results

Farewell Party



Photograph shows Lt. and Mrs. John L. Norton, Jr., left, with Colonel and Mrs. Johnnie D. Duffie. Picture was taken during a farewell party Saturday evening given in honor of the Nortons by personnel of Sunny Point Army Terminal.

High Times Several Projects For Development

Here is your reporter telling you more of the news and happenings around the Dolphin home.

The May Day festivities were a big success. There was a big crowd for the crowning of the queen and the dance program.

The Dolphin was released on Friday and it was a very good issue. On the last page is a ballot for the Democratic primary.

In baseball this week we play Bolivia on Thursday and Oling Creek on Saturday night.

The Glee Club held its concert on Sunday afternoon. It was very enjoyable and was repeated for the entire school on Wednesday morning.

Senior Day will be held on Friday. The seniors will present a program including their history, prophecy, and last will and testament at 2 in the auditorium.

Don't forget that exams are coming up next week. Everyone be sure to study for them.

Seen Around . . . Heene doing the twist . . . Joe T. and Dale S. wearing their cowboy (?) hats to school Friday . . . Mr. White skiing Sunday.

Well, that's all for this week. See ya'll around S. H. S.

Seventh District

Export Total \$49,000,000

Columbus county and the other seven of the Seventh Congressional District reap \$49 worth of business from the country's export trade, a release from the U. S. Commerce Department reports.

In addition, the report points out, some 3,800 farm workers in the eight-county District owe their jobs to exports, or 12 per cent of farm workers in the District produce for export.

The summary says six Seventh District companies exported \$20.2 million worth of manufactured products in 1960, principally textile goods and electrical machines.

Sales from farm products to other countries brought in \$28.8 million in the 1960-61 crop year.

The six reporting exporters in the district provide full-time employment for almost 3,000 workers. Exports from these companies represent 29 per cent of their combined shipments for 1960.

The figures, the report said, are minimum in that some companies did not report their exports.

Rating high in District manufactured products is the Riegel Paper corporation at Acme. The pulp and paperboard division there has a daily capacity of 750 tons of pulp and 300 tons of paperboard, both of which, the report goes on, are exported.

The study shows that agricultural products provide major support for the District's economy.

Field crops bring in \$28,100,000, livestock and livestock products \$513,000, fruits and nuts \$134,000 and vegetables \$76,000.

In addition to the Riegel plant, the report lists the J. E. Thompson firm of Hallsboro as another county exporter.

In a foreword to the survey, Secretary Luther Hodges pointed out that in 1961 U. S. exports exceeded imports by about \$5 billion which surplus, he said, is essential to the national security for it helps us pay for our military and economic aid and other commitments abroad.

But despite this favorable trade balance, Secretary Hodges continued, the United States has been experiencing a deficit in its international accounts. Settlement of the deficit has led to an outflow of United States dollars and gold. To reduce this outflow, he said it is vital that the nation increase its exports.

Assuming that exports will increase, the country will then be in position to pay for international commitments without the necessity of settling in gold.

Included in the report is a reference to the debate going on now concerning the tariff and its relationship to the European Common Market.

The reference indicates that adjustments are mandatory else "we may find ourselves frozen out of this vast market."

In the event some domestic producers face damaging foreign competition which those producers are not able to absorb, it has been recommended that the federal government help in providing relief. The reference is to both industrial and farm producers.

The report quoted the President on the subject: "We need imports if other nations are to have the money to buy our exports and the incentive to lower their own tariff barriers (on our exports) . . . and to keep a healthy pressure on our own producers and workers to improve efficiency, develop better products, and avoid the inflation that could price us out of markets vital to our prosperity."

More than \$16,700,000 has been advanced in rural housing loans in North Carolina, Hearn said, and principal and interest payments totaled about \$5,800,000. Of the 16.7 million in loans, not one dollar has been written off as uncollectable.

A fifth of all loans have been repaid in full, the FHA State Director said. Payments of principal and interest on the 1,754 loans outstanding total \$3,318,000, or 111 percent of the amount that has become due.

"This is a remarkable tribute to the financial integrity of rural families, and their ability to manage their financial affairs, said Director Hearn. "Loans under this program are made only to those who cannot obtain financing from conventional sources. As a result, the 2,170 families who obtained these loans have had to be extra diligent in meeting their payment obligations."

The repayment on rural housing loan borrowers also is a tribute to the judgment of the 273 county committeemen of the Farmers Home Administration who assist in evaluating soundness of the loans, the State Director said.

"This program provides benefits throughout the entire rural-based small town economy," he added. "Contractors, small businessmen supply contractors, and building trades workers all benefit through increased business. Their stepped-up activity in turn stimulates the entire rural economy. The approximately \$6,000,000 in housing loans the Farmers Home Administration will make available this year is the equivalent of many new industries in terms of more jobs and greater purchasing power."

each month will be held in May on the 3rd Monday, May 21, at 1 p. m.

This clinic will be conducted by Dr. Ralph Moore, an excellently prepared pediatrician from Wilmington. This clinic was formerly conducted by Dr. Ursula Anderson from the State Board of Health. This clinic is for infants through 6 years of age.

Don't Let It Run Out

ORANGE Crush

Distributed In This Area By Electric Bottling Co., Inc. WILMINGTON, N. C.

Seil At Home — Trade At Home

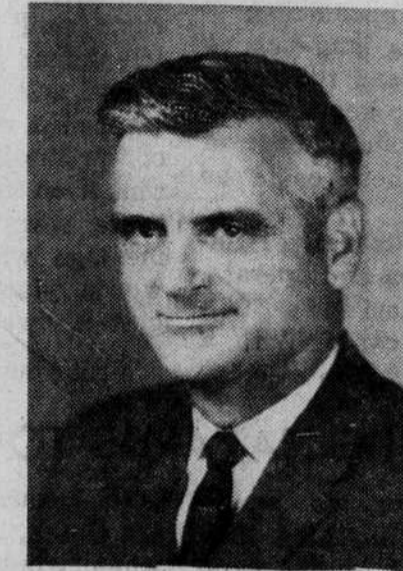
JENSON PIANO

The smallest spinet in the world with standard, direct blow action and many other features. Give us your order. No down payment. Three years to pay.

H. J. HENSON & CO.

Phone PL 4-6712 SHALLOTTE, N. C.

MY PROMISE TO MY FELLOW CITIZENS



If I am elected to represent the people of Brunswick County in the State Senate I simply pledge to devote my full time during the legislative session, and as much time before and after as is necessary, to the promotion of our County and its interest. I will always be available for discussions with you, the people, as to how I might do this more effectively.

I believe that when the people are informed as to the activities of their government, the officials of that government will heed their wishes. I shall, therefore, see that you the people, are kept informed as to what is going on in Raleigh and will also see that you are kept properly informed on matters of public business here at home.

RAY WALTON

SHOP AT ARRINGTON'S Southport, N. C.

CONGRATULATIONS GRADUATES!



We Have A Wide Selection Of Gifts Of Lasting Value and Good Taste For Young Ladies and Young Gentlemen.

KIRBY'S

Shalotte, N. C.

WE REDEEM GOLD BOND COUPONS — We Close Wed. 1 P. M.

For County Commissioner



Investment by outside capital in real estate and homes here in Brunswick County has added several million dollars to our taxable wealth during the past few years.

The type of person who builds a vacation home or who plans to move in this area for retirement is likely to be very much interested in the business affairs of our county, and particularly of the tax valuation and tax rate.

I believe that we must do everything reasonable to prevent erratic changes in our tax structure, and I believe that the application of good business practices will make this possible. This I will endeavor to do if nominated and elected.

E. C. BLAKE

FOR CLERK OF COURT



I thank you for the encouragement that I am receiving in my campaign for the Democratic Nomination for Clerk of Superior Court as I travel about the county. I have seen and have talked to many of you in person, and I will continue my plan to visit and talk with as many as I possibly can before May 26. I will appreciate your interest and support on behalf of my candidacy.

ELRICH HICKMAN