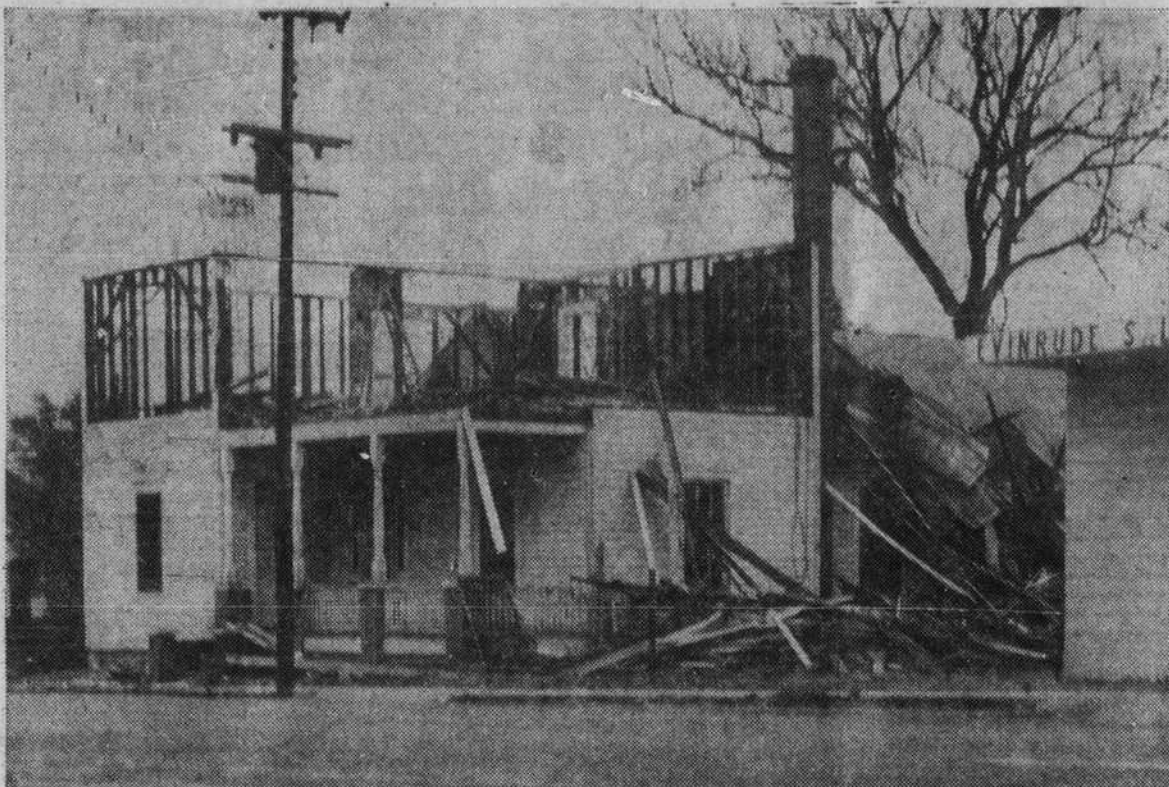


Make Way For Progress



DEMOLITION—This two-story frame house on Howe Street is being torn down to clear the site for the erection of a new office building in which to house the local branch of the Waccamaw Bank & Trust Co. No announcement has been made regarding the date for starting construction, but it is expected to be during the coming year. (Staff Photo by Allen).

Shalotte Has Two-Car Wreck This Afternoon

Five Persons, Including Special Deputy J. L. Stone, Hospitalized In Wilmington

A Brunswick County deputy and four persons from the Delco area of Columbus were injured in a two-car collision, which occurred at 1:30 this afternoon (Wednesday), just north of the Shalotte city limits.

State Trooper B. E. Day said the cars were driven by Mrs. Lena Self Roberts, 28, of Delco, who was driving a 1961 Chevrolet, south on US 17; and John L. Levie Stone, 68 of Shalotte, a Brunswick County deputy, driving a 1959 Ford north on the through highway.

Both drivers and three of the four Roberts children, in the car driven by their mother, were treated at James Walker Hospital in Wilmington. Mrs. Roberts has chest injuries, suffered when she was thrown against the steering wheel and the latter broke.

Stone also is suffering broken ribs and other chest injuries according to Day's report, which said both drivers were considered in painful, but satisfactory condition.

A 9-year-old daughter of Mrs. Roberts, Sherrill Roberts, was riding on the right front seat and was thrown through the windshield by the impact of the collision and suffered severe head injuries. Her condition is considered serious at James Walker Hospital, Trooper Day said.

Joey Dall, 11, son of the Delco woman, suffered a nose injury and Cindy, 8-year-old daughter, complained of a back ailment. Wayne, 7, the other son in the Roberts car, had no visible injury, the trooper said.

Trooper Day said that investigation tended to show that as the two cars neared a point one-tenth mile north of Shalotte on US 17 near the Shalotte Skating Rink, the Ford driven by Stone (Continued On Page 4)

Christmas Scene



CELEBRATION—There was cause for celebration at the home of Mrs. Fred Stevens this Christmas as her grandson, Airman Woodrow Piner, standing in the rear, was home from England with his English bride, shown holding their young daughter. Mrs. Stevens is seated in front of her grandson, and next to her is Mrs. Gladys Johnson, mother of the service man. Others in the scene about the family Christmas tree are his sisters and brothers. (Staff Photo by Allen).

New ASC Plan For Recreation Being Outlined

Certain Farmland May Be Diverted For Use Under Provisions Of new plan By ASC Officials

A limited number of farmers in Brunswick County may be eligible for cost-share assistance in establishing pilot recreation enterprises on their cropland in 1963, according to Lonnie Evans, chairman, Brunswick County Agricultural Stabilization and Conservation Committee.

The enterprises, part of the long-range program of land-use adjustment designed to help farmers convert their farms from crop production to grass, trees, wildlife and income-producing recreation uses, were authorized by Congress as a part of the Food and Agriculture Act of 1962.

Under the program, the Government will share with a limited number of farmers the cost of conservation practices needed in order to make these conversions. In addition, adjustment payments will be made to help farmers make the conversion if the land is suited for regular use in the production of crops. Primary responsibility for administering this program has been delegated to USDA's Agricultural Stabilization Service, in cooperation with other Department agencies, Evans pointed out.

The pilot recreation developments may include conversion of all or part of the eligible land on a farm to recreation use. Only farmers or groups of farmers who own or operate cropland, which is being devoted to the production of new crops or small grain, and tame hay, will be eligible to participate in the program. Land already in forest trees or shrubs for wildlife or water impoundments will not be eligible, nor will land which has changed ownership in the past two years.

Loans for capital facilities such as buildings and boat docks will be available to qualified participants through USDA's Farmers Home Administration. In addition, plans for more extensive FHA (Continued On Page 4)

English Bride Spending First Christmas Here

Airman Woodrow Piner Back Home For First Time In Past Four Years And Has Wife And Daughter

It was a happy Christmas at the Magnolia Dairy Farm near Southport when Airman Woodrow Piner returned from England with his English bride and their daughter in time to spend the holidays with other members of his family.

And that is quite a family group.

At the head of the clan is his grandmother, Mrs. Fred Stevens. Next in the chain of command is his mother, Mrs. Wesley Johnson; and their are sisters and brothers of all ages.

This was the first time in four years that the young service man has been at home for Christmas, and for the past three years the holiday season has found him on duty at Fairford, England. Times were not so lonesome for him there after he met and married the former Patricia Dianne Tanner. Their wedding took place on December 28, 1960.

The family was anxious to see Woodrow, and they wanted to see his new bride; but the fact of the matter is that the chief object of interest among the visitors was their daughter, Donna Joan, now a little over one year of age.

Airman Piner and his family will be here for the duration of his 30-day leave, after which he will report for duty at Malmstrom Air Force Base, in Montana.

Airman Piner apparently likes the Air Force for he reports that he has reenlisted and plans to make it a career.

Receives Award



BOBBI SMITH AND MOTHER

Two Southport Girls Win High Scout Award

The highest rank in Girl Scouting was reached by two members of Southport Troop 502 this week when Curved Bars were awarded to Billie Mace and Bobbi Smith. The girls had worked for more

Two Princesses Reign At Bolivia

Two Young Winners As Result Of Contest Conducted Under Auspices Of Senior Class

The selection of two princesses of Bolivia High School was announced Friday night and plans are underway for a Christmas program at the school Thursday night.

Dorinda Ward, daughter of Mr. and Mrs. William J. Ward, was named princess of the elementary grades and Nanette Davis, daughter of Mr. and Mrs. Thomas Davis, was named princess of the high school.

The two girls were presented teddy bears by Senior Class President Thomas Maulsby during the intermission of the class play, "Teen-Age Millionaire". Approximately 200 persons attended the play. Afterwards a social hour was held in the school lunchroom.

The annual Lions Club Christmas program will be held Thursday night at 7 p. m. at the school. The primary, elementary, and high school chorus, under the direction of Mrs. A. S. Knowles, will sing Christmas carols. After the program, Santa Claus will distribute goodies. (Continued on Page 4)

County Behind In Bond Sales

Records Show Brunswick County Lagging In Sale Of Series E And H Bonds

Series E and H Savings Bonds sales in North Carolina for the month of November amounted to \$3,782,999, which is nearly 13 percent below November sales of 1961.

Cumulative sales of E and H Savings Bonds in the State for January-November 1962 were \$44,608,316. This is less than 1 percent below sales for the comparable period of 1961.

Bond sales during November in Brunswick County were \$2,956, according to Aubrey Johnston, Brunswick County Volunteer Savings Bonds Chairman. For the year bond sales totaled \$31,962, which is 27.1 percent of the county's quota for this year.

Superior Court Jury List For January Term

Superior Court Term For Trial Of Criminal Cases Will Convene On Monday, January 21

Jury members for the criminal term of Brunswick County Superior Court which will be held in Southport the week of January 21 with Judge C. W. Hall of Durham presiding have been selected, according to Clerk of Court Jack Brown.

Brunswick county citizens named to serve on the jury include H. A. Mercer, Garvin Mercer, and L. M. Clemmons, Sr., all of Bolivia; John Dennis Lennon, Jr., W. C. Smith, Grady Barnes, Paul M. McLamb, Preston Watson and Joseph Dyson, all of Leland;

Kenneth Poteet, Coda Smith, C. R. Hayes, Cyril Thomas, M. A. Sullivan, D. A. Jones, Roscoe Davis, Nelson Adams, H. M. Fair, Franklin Potter, Edward T. Driscoll, Leon T. Smith, Sam Rees, Jr., William G. Faulk, Jr., William Warnett, O. R. Stubbs, Malcolm Stidham, Harry Sell, John Richard Doshier, Thomas Leroy Stanley, J. A. Gilbert, Gibson V. Barbee, Jr., Edgar Jones, Preston Bryant, Jasper Bellamy, Robt. (Continued On Page 4)

State President At Leland Meeting

John L. Kennedy Of Fayetteville Will Be Principal Speaker At Charter Night Banquet Thursday

The State President of the North Carolina Jaycees will be in Leland at the Jaycees' Charter Night banquet on Thursday of this week.

John L. Kennedy, of Fayetteville, head of the Number One Jaycee state in the nation, is also president of the Fayetteville Board of Realtors. He has served as past president of the Musical Arts Guild in Fayetteville, chairman of the Cumberland County American Red Cross Chapter, and director of the Fayetteville Chamber of Commerce.

On a local, state, and national Jaycee level, he has served in many capacities, having set a record in membership increase as President of the Fayetteville Jaycees.

Kennedy is a Phi Beta Kappa graduate of the University of North Carolina, was an enlisted man in the U. S. Army during the Korean conflict. He is married and a deacon in the First Baptist Church in Fayetteville.

During the remainder of the the more than 95,000 Jaycees across North Carolina towards their goal of being recognized the best Jaycee state in the U. S. for the second consecutive year.

The club at Leland was sponsored by the Southport Jaycees, and several members of the local organization plan to attend the Thursday meeting. Kirby Sullivan, Southport attorney, is District vice-president and will have a part in the program.



JOHN L. KENNEDY

Changes Occur In Grain Plan

New Provisions Of Feed Grain Program Appear To Favor Condition Of Small Farmer

An increase in the national price support rates for feed grains during 1963 has been announced by Secretary of Agriculture Orville L. Freeman, according to Manager Ralph L. Price of the Agricultural Stabilization and Conservation Office in Shalotte.

The national support rate on corn will be increased from \$1.20 to \$1.25 per bushel or from 75 to 78 percent of the December parity price. Barley has been increased from .93 to .96 per bushel, oats from .62 to .65 per bushel, rye from \$1.02 to \$1.07 per bushel and grain sorghums from \$1.91 to \$2.00 per hundredweight.

These are national support rates and in North Carolina a freight differential is added. Thus, based on the 1962 differential, the support rate on corn here would be \$1.39 per bushel. The support rates on the other feed grains will also have the freight differential added.

Small farms will be able to divert their entire acreage and receive a payment on the entire acreage based on 50-percent of the county price support rate, according to a special provision in 1963 Feed Grain Program announced by Secretary Freeman. It was originally stated that small farms with a total base of less than 25 acres would receive a payment of 20 percent of the price support rate on the first 20 percent diverted. (Continued On Page 4)

Miss Brunswick Pageant Planned

Preliminary Work Already Being Done By Shalotte Jaycees In Anticipation Of Coming Event

With no preliminaries, the third annual Miss Brunswick County Beauty contest will be held in Shalotte March 9, according to Jaycee President Gene Blair.

"There will be just one contest this year with no preliminaries," President Blair said. All Brunswick county girls between the ages of 18 and 25, and high school seniors or graduates, are eligible to enter the contest. Official entry blanks may be secured from Thurston Mintz.

The winner of the Miss Brunswick County contest will receive a \$500 scholarship to the school or college of her choice. She will also represent Brunswick county at official functions. Four runner-up prizes will be awarded.

Carol Lane Hewett, a sophomore at Campbell college, was the first Miss Brunswick county while Cheryl Rogers won the title last year.

A mock Miss Brunswick County contest will be held early in February for male entries.

Brief Bits Of NEWS

ASSISTANT CORONER
Coroner L. B. Bennett has announced the appointment of T. E. Gilbert of Southport as assistant coroner for Brunswick county. He replaces G. C. Kilpatrick in this capacity.

CHRISTMAS CARD
The biggest Christmas card we saw this season was a transmission received at Suny Point Army Terminal from Charleston, S. C., via inter-service IBM machine transmission. It was a figure of Santa Claus and Merry Christmas etched out in a special typing sequence.

1963 WHEAT PROGRAM
Changes in operation or ownership of farms should be reported to ASCS without delay. ASCS would like to keep its records always current on farm operation and ownership so that current information goes to those in charge of the farming operations. Operators and owners who anticipate sales or other land changes should consult ASCS about latest farm constitution regulations.

TIME and TIDE

Twenty-five years ago this week sudden large catches of shrimp had again brought activity to the Southport waterfront. During the days preceding that edition, the high boat's catch was anywhere between 30 and 50 bushels. Each bushel was being sold at \$3, and a half a dozen boats were averaging over \$100 per day.

The H. M. S. Apollo, a 7,000 pound light cruiser of the British navy, was due to visit Wilmington and pass through Southport's harbor. The visit was to be only a courtesy call.

Interest was still aroused concerning the future of Cape Fear's gamefish possibilities following the discovery of the abundance of fish during the preceding summer season. The Civic Club was urging the citizens of Southport to support the fishing trade as much as they could.

Twenty years ago this week the rationing board was busy adjusting fuel rations, and not much hope was given to the possibility of lifting the restrictions. Brunswick county motorists had been halted and were not allowed to use more than a small amount of fuel for their cars. The same restrictions were placed on the homeowners for fuel oil.

The rationing on gas and tires had halted the delivery of retail milk. Only milk going to the store was to be delivered. Fred Stevens, manager of the Magnolia Dairy, made the announcement and said that he had delivered milk to a point where his tires would no longer take the strain.

Preston Bryant, a Southport resident, was named a lieutenant (jg) in the U. S. Naval reserve. Bryant had seen much sea duty aboard the dredge Comstock as a Captain after the craft was converted to a government freighter.

Fifteen years ago this week a letter was received from T. L. (Continued On Page Four.)

Church Burns In Friday Fire

Prospect Baptist Church Near Supply Totally Destroyed; Was Landmark In Brunswick County

A religious landmark in Brunswick county was lost Friday night when Prospect Baptist Church near Supply was destroyed by fire.

The Shalotte Fire Department answered a call to the scene, but the blaze was out of control before the truck arrived. Everything in the building was destroyed except a Bible and a few other small items removed by an unidentified young man who discovered the fire.

A group of church members had been at work during the afternoon putting up Christmas decorations and decorating the Christmas tree. It is believed that (Continued On Page 4)

Tide Table

Following is the tide table for Southport during the week. These hours are approximately correct and were furnished The State Port Pilot through the courtesy of the Cape Fear Pilot's Association.

HIGH	LOW
Thursday, December 27,	
7:59 A. M.	1:50 A. M.
8:05 P. M.	2:35 P. M.
Friday, December 28,	
8:41 A. M.	2:32 A. M.
8:49 P. M.	3:18 P. M.
Saturday, December 29,	
9:24 A. M.	3:16 A. M.
9:35 P. M.	4:03 P. M.
Sunday, December 30,	
10:10 A. M.	4:03 A. M.
10:25 P. M.	4:49 P. M.
Monday, December 31,	
11:00 A. M.	4:53 A. M.
11:21 P. M.	5:35 P. M.