

# Merry



# Christmas

The Pilot Covers  
Brunswick County

## THE STATE PORT PILOT

Most of the News  
All The Time

A Good Newspaper In A Good Community

Volume No. 23

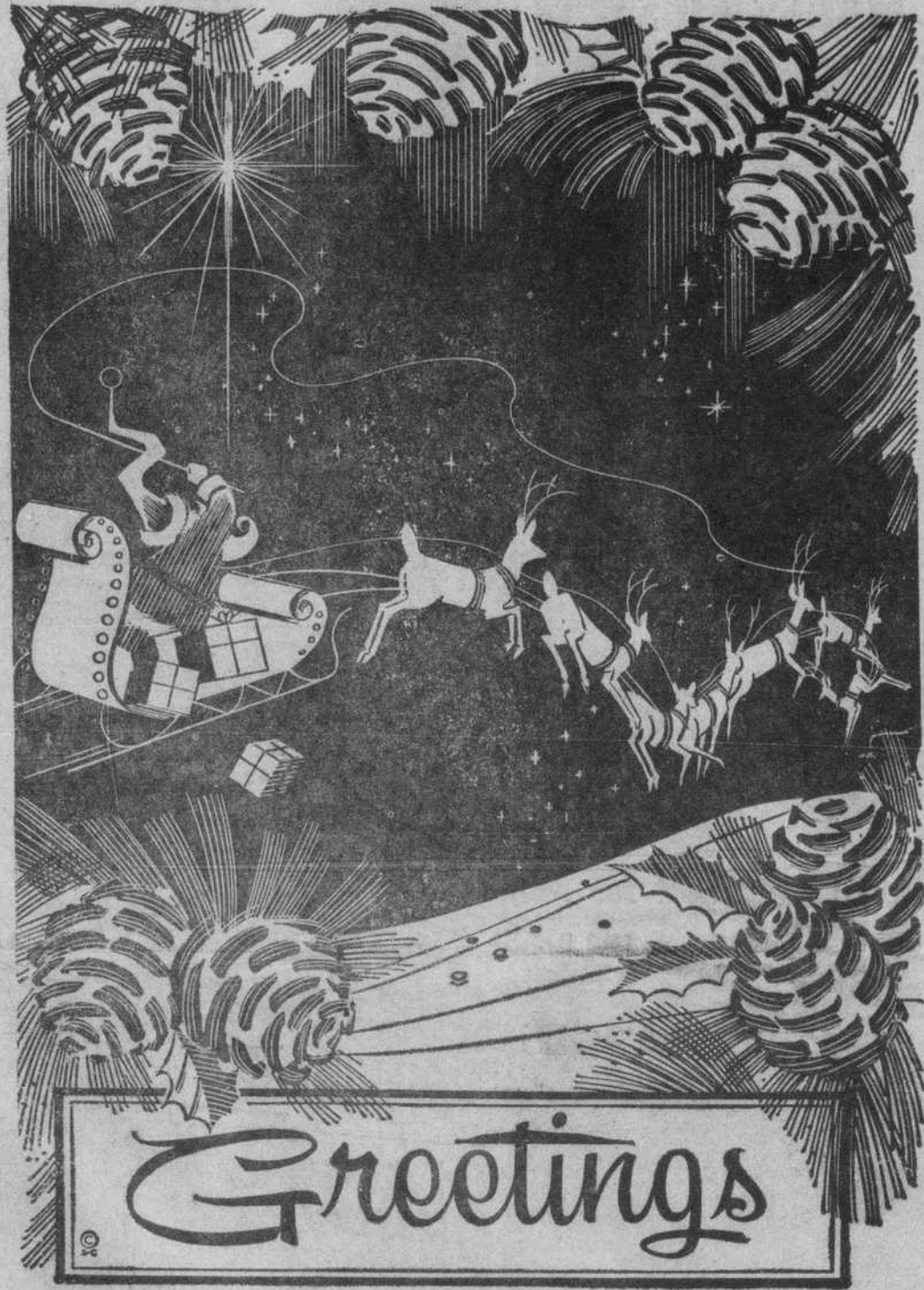
No. 26

8-Pages Today

SOUTHPORT, N. C. WEDNESDAY, DECEMBER 25, 1963

5c A COPY

PUBLISHED EVERY WEDNESDAY



### Coast Guard In Area Unaffected By New Orders

Announcement Gives No Clue To Any Change Affecting Oak Island Or Patrol Boat

Announcement was made in Washington Friday of a reshaping in the Coast Guard operation in North Carolina which will add 41 men to the complement in this area and will modernize the rescue fleet now in operation. Two existing Coast Guard Stations will be closed and one new station will be opened under provisions announced by the Treasury Department.

So far as can be learned, none of these changes will affect either the status or the personnel of Oak Island Station or the Coast Guard Patrol boat, both stationed at Southport.

Two historic North Carolina stations at Caffey's Inlet and Kill Devil Hills—would be closed, under the plan announced.

The State would gain a new station on North Albemarle Sound, and six existing stations would receive new men and new equipment.

Continued On Page 4

### Brief Bits Of NEWS

**CHRISTMAS EVE PROGRAM**  
Services will be held at 7:30 p. m., Christmas Eve at St. James' Episcopal Church, Shallotte.

**NEW RESIDENTS**  
Mrs. Lillian K. Riley and Miss Antoinette Maultsby have retired from Government Service in Washington, D. C., and have moved here since Friday. Mrs. Riley is a sister of Col. W. G. Kemper.

### Senators May Be Few For Brunswick

Columbus County's Suggestion For Rotation Would Give Senator To County Once In 8 Years

The Columbus County Democratic Executive Committee last week unanimously voted to rotate with Bladen and Brunswick on an every other term basis with the first term coming at next year's election.

In other words, the plan would call for the election of a senator from Columbus, then Brunswick, then Columbus, then Bladen, then Columbus, then Brunswick then Columbus etc.

It provides a senator from Columbus every four years while Bladen and Brunswick would be represented only every eight years.

Chairman of the Brunswick County Democratic Executive Committee, Kirby Sullivan, said the county group will meet after the January 14 election to consider Columbus' plan. He indicated that opposition would be expressed.

Chairman Sullivan, emphasizing that he did not speak for the committee, made some personal observations about the Columbus proposal.

He said he favored rotation on a three county basis between Brunswick, Bladen and Columbus. If that failed, Chairman Sullivan said he would favor at large representation. "Personally, I favor electing a senator at large rather than having one just every eight years," he added.

"I was not surprised at the action Columbus took, but I hope we can work out a three county rotation plan," he concluded.

In years past this has been a four-county senatorial district with two senators allocated. The district was made up of Columbus, Bladen, Brunswick and Cumberland.

Continued On Page 4

### Drive In Bank At Lake Waccamaw

C. Lacy Tate, president of the Waccamaw Bank and Trust company has announced that the Federal Deposit Insurance Corporation of Washington, D. C. has granted approval of a drive-in bank at Lake Waccamaw.

According to Tate construction will begin soon after the first of the year and is expected to be in operation by March 1.

### Driver Training To Be Held

Driver Education Class Being Scheduled At Night In Agriculture Building At Supply

The North Carolina Department of Motor Vehicles announced this week a driver education course, sponsored by the vehicles agency, has been scheduled for Brunswick County.

All 16-18 year old youths who want a driver's license must successfully complete a driver education course. The course offered by the Department of Motor Vehicles is designed to supplement regular high school driver training and to meet the needs of those young people to whom such training is not available.

High school students will be required to have written permission from their principal prior to enrollment.

This course will be taught at the Agriculture Extension Building, Supply.

Continued On Page 4

### Schedule For Holiday Period Starts Tuesday

County Employees Take Off For Rest Of Week With City Employees Having Three Days

The consolidated schools of Brunswick county closed Friday at noon for the Christmas holidays and will not convene again until Thursday, January 2.

All county offices will close Tuesday at noon and will not be open until Thursday.

(Continued On Page 4)

### Shallow Draft Dredge Will Be Operating Soon

New Equipment For Use In Wilmington District May Bring Relief For Several Brunswick Problems

The small inlet problem which has plagued Brunswick fishermen for so long may be solved soon if it is not already solved.

The Corps of Engineers is about to launch a self-propelled drag-arm type dredge designed especially for maintaining reasonable depths in small inlets along the Tar Heel coast. It is "The Merritt," and named for the late Mr. Bob Merritt who started out with the Wilmington District office in the 1880's as an errand boy and remained to become the only civilian ever to hold the number one post—District Engineer—during World War I. Mr. Merritt died about 1950.

Actually, The Merritt is a shallow draft dredge with about a five-foot draft which will be able to work in small narrow inlets sucking up sand and pumping it overboard through a pipeline suspended from a long derrick built aboard the stern of the vessel. It will be self-sustaining in every respect with living quarters aboard and its own power plant for maneuvering into and out of small inlets.

A converted World War II Navy recovery craft, the new venture in shallow inlet dredging is expected to go through trial operations in January in the Snows Cut area of the Inland Waterway. How well it performs there will determine how soon it may be pressed into service in other areas where the need for deeper water in inlets is greatest.

The present schedule, according to the Engineers, calls for work in Topsail inlet, some in the Pamlico Sound area and then it will be turned for both snagging and dredging the eight-foot channel in the Cape Fear River between Wilmington and Fayetteville.

Col. J. G. Grygiel, District Engineer, reported a few days ago that the "overboard" dredge is designed to work in channels and the like with depths of up to 10 feet. This makes the dredge particularly adaptable to removing shoals in the Inland Waterway as well as other small craft channels and inlets.

The development of a small dredges cannot work in waterways of depths less than 14 feet.

This has been pointed out in numerous public hearing for relief and, now that a remedy is about to become a reality, a better day for fishermen in our area and others seems not to be far off.

Continued On Page 4

### Pastor Oak Island Mission Graduates

The Rev. Horace L. Hawes, Jr., Completes Work At Southeastern Seminary; To Graduate In May

The Rev. Horace L. Hawes, Jr., pastor of Oak Island Baptist Mission, has completed the requirements for the Bachelor of Divinity degree at Southeastern Baptist Theological Seminary. He will be graduated at the regular seminary commencement exercises in May, 1964.

Hawes, the son of Mr. and Mrs. Horace L. Hawes Sr. of 10 Central Blvd. in Wilmington is a graduate of New Hanover High School, Mars Hill Junior College and the University of North Carolina.

He has served as pastor of the Mt. Holly Baptist Church prior to assuming his duties at Oak Island Baptist Mission.

Since coming here he has seen the work at the nearby beach resort develop to the point where it was necessary last summer to make additions to the classroom space at the education building at the mission. The next step in plans



HORACE L. HAWES, JR.

for that church will be the erection of a sanctuary.

In his work at the Baptist Mission, the Rev. Hawes has been particularly effective in his work with the young people.

### Sunny Point To Be Location Of Army Training

Eight Hundred Troops From Fort Eustis, Va., Expected To Participate In Training Exercise

A second training exercise similar to the October 1962 program is scheduled to begin about January 7 at the Sunny Point Army Terminal, officials at the Terminal have advised.

The coming training program will run through January 22 and will involve about 800 men from Fort Eustis, Va.

They will be taken from the Fourth Transportation Command and will include two terminal service commands, one amphibious company and a transportation boat company.

While there was no announcement of the effect, it is probable that Bald Head Island will figure in the several phases of training operations of the expected 800-man force.

It is significant to point out in this respect that the October 1962 exercise consisted mainly of landing on the noted island and came only a few days before the quarantine of Cuba was ordered by late President Kennedy and stemming from the shipping to and from the island.

Continued On Page 5

### Memorial Books Added To Library

Boat Licenses Going On Sale

The State Department of Conservation and Development announces that commercial fishing boat licenses for 1964 are not on sale and that the deadline for getting them is next February 15.

Upwards of 7,000 licenses issued during 1963 to commercial fishermen operating in North Carolina waters, Dr. David A. Adams, State Fisheries Commissioner, said.

Cost of the licenses varies according to the size of the boats used in commercial fishing operations.

Boat licenses may be obtained at the C & D Department's Division of Commercial Fisheries in Morehead City, division inspectors, or from other authorized agents, Dr. Adams said.

### President Farm Bureau Speaks

Ira Chadwick Thinks Citizens Of Brunswick Have Important Stake In "Little Federal Plan"

How will county citizens be represented in the State Legislature under the present system of membership and under the proposed amendment to the state's Constitution?

Ira Chadwick of Shallotte, president of Brunswick County Farm Bureau, explains the two plans for legislative representation.

"In the special session of the legislature this past fall, the Senate was redistricted for the first time since 1941. Membership remains at 50; but the 33 old districts were reshaped into 36 new ones. Changes in number of Senators per district were made according to population changes since 1941, taking Senators away from the less populous areas and giving more Senators to the more populous areas.

"House membership, which had been reapportioned by the 1961 Legislature, remains at 120. Each of the 100 counties is permitted one Representative. The more populous counties divide the extra 20 Representatives.

Continued On Page Four

\*Southport Public Library Has Many Valuable Books Added To Its Shelves During Past Year

The Southport Public Library has been enriched by more than 30 memorial volumes during the past year. These gifts include books on flowers, the sea, antiquities, poetry, North Carolina and nature as well as children's and song books.

Donations have been given in memory of Mrs. Ollie Hall Barber, Mrs. Mary Pearce Cranmer, Mrs. Alta W. Doshier, Mrs. Viola Weeks Guthrie, Mrs. M. P. Holden, Mrs. Dorothy Bell Kaufman, Thomas L. Larsen, Joseph J. Loughlin, Jr., William R. Lingle, Mrs. Ann C. Fancoast, Richard D. St. George, Miss Margaret M. Tomlinson, Mrs. Virginia Thompson Wade, Captain Hulan Watts and Mrs. Thelma S. Willis.

Volumes chosen as memorial tributes are in fields of the deceased's interests where the library collection needs additional books; and are usually in a price range not with in the library's book budget.

In the flower and garden category, recent memorial additions are: "Carolina Gardens", "Handbook of wild flower cultivation", "Encyclopedia of roses in natural color", "Flower arrangement for churches" and books on camellia culture and landscaping.

The sea is represented by Cousin's "The living sea", "National Geographic book of fishes" and Herald's "Living fishes of the world".

The library's collection of song books has been increased by Carl Sandburg's "America Sings", the Cole Porter song book, and "Sing for Christmas".

Nutting's "Furniture treasury", with 5000 illustrations, makes it a real treasury of information on early American furniture. Other memorial volumes on antiques which have been given are Lee's "Victorian glassware" and "Early American glassware". Also of interest to antique enthusiasts is "A Tour of the White House with Mrs. John F. Kennedy", based on last year's television program of the same name.

Poetry by T. S. Elliot and Carl Sandburg have also been given. Popular for browsing and information are "The Southeast in early maps", "The face of North Carolina", "The continent we live on" and "Wild animals of North America".

Weighty both in size and content are Latourette's "History of Christianity" and Morrison's "The Two-

Continued On Page 4

### REA Sends Out Dividend Checks

Brunswick Electric Membership Corporation Mails Checks To More Than 7,000 Members

Last week the Brunswick Electric Membership corporation mailed approximately 7,000 checks that averaged \$1 to \$50 to members that were receiving service in 1962 and 1963.

The money mailed was approximately \$160,000 and was a cash refund of capital credits earned by the members.

The amount of each check to members depends on the amount of usage by the individual member in the years 1962-63.

According to General Manager E. D. Bishop, "This is true evidence of positive ownership by the members."

Bishop explained that in 1962-63 Brunswick Electric served some 7,000 members. That number today has grown to 11,800.

The board of directors in 1969 set a policy that resulted in the cash refunds. In 1969 the board ordered that cash refunds go to subscribers during the 1939-49 period. In 1961 the board ordered that the years 1950-51 be covered and the recent action brings total coverage from 1939 through 1963.

### Tide Table

Following is the tide table for Southport during the week. These hours are approximately correct and were furnished The State Port Pilot through the courtesy of the Cape Fear Pilot's Association.

HIGH	LOW
Thursday, December 26,	
3:43 A. M.	10:22 A. M.
4:08 P. M.	10:42 P. M.
Friday, December 27,	
4:45 A. M.	11:24 A. M.
5:09 P. M.	11:38 P. M.
Saturday, December 28,	
5:43 A. M.	12:22 A. M.
6:08 P. M.	
Sunday, December 29,	
6:40 A. M.	0:32 A. M.
7:05 P. M.	1:17 P. M.
Monday, December 30,	
7:35 A. M.	1:25 A. M.
8:01 P. M.	2:09 P. M.
Tuesday, December 31,	
8:28 A. M.	2:15 A. M.
8:54 P. M.	3:00 P. M.
Wednesday, January 1,	
9:21 A. M.	3:06 A. M.
9:48 P. M.	3:49 P. M.

## TIME and TIDE

It was December 24, 1958, and James C. Bowman was re-elected president of the SENC Beach Association. Some 1,220 persons received free TB X-rays during the past week during a county-wide project of the Southport Woman's Club.

The Air Force unit of which Eddie Lindner of Southport was a member helped produce the Hollywood movie, "The Hunters". Captain Walter Lewis reported he had charters booked for December 26 and 27. "Then we're stopping for the rest of the week", he said, "A man can't fish all year long."

It was December 23, 1953, and Dr. C. E. Crandell explained the cost and value of a flouridation program for Southport's water supply at a Lion's Club meeting. Only five cases were settled at Monday's Recorder's court.

The merchants and business leaders were sponsoring a community dance Saturday night in Southport. Santa Claus arrived in Shallotte by air Thursday and was driven to the playground by automobile.

It was December 22, 1948, and there was news that the Estonian refugees who landed in Southport in August on small boats may be allowed to remain in the United States. Corbett Coleman of Ash was re-elected to the County Soil Conservation committee.

Elroy King of Waccamaw was re-elected chairman of the AAA farm program in the county. The Southport Woman's Club

Continued On Page 4