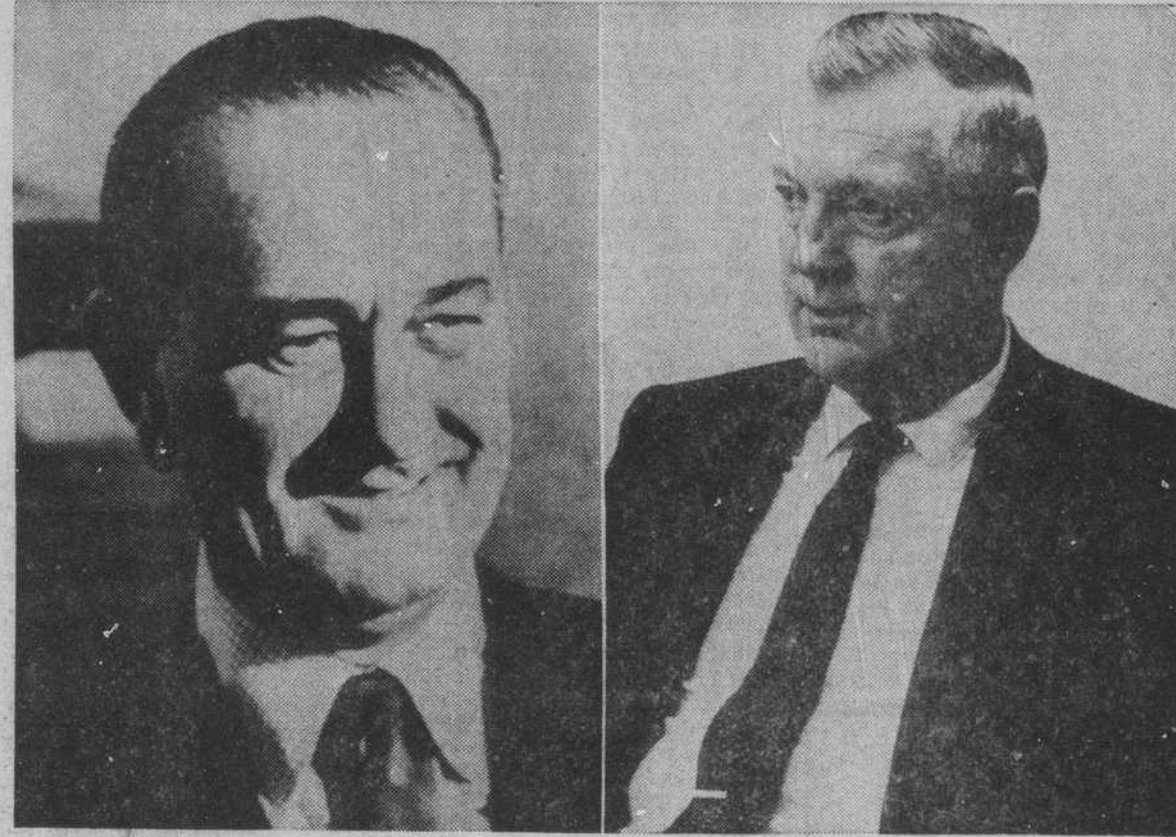


## Democrats Win Big-- County, State, National

### Incomplete, Unofficial Election Returns

	President		Governor		Lt. Gov.		Rep.		R or D		Judge		County Commissioners										Edu.		
	Johnson	Goldwater	Moore	Gavin	Scott	Bell	Williams	Willets	Clark	Warren	Beilamy	Andrews	Rourke	Gilles	Hufham	Bowmer	Harrelson	Holden	Nielsen	Frink	Russ	Formy	Duval	Yes	No
Hoods Creek	161	97	133	118	146	83	144	89	158	70	142	84	165	75	103	138	60	142	57	140	65	135	153	71	
Leland	434	361	353	425	383	341	406	298	505	250	439	254	451	298	299	376	226	387	228	387	255	363	430	515	153
Town Creek	461	303	453	329	479	274	471	271	470	272	463	261	464	276	340	464	242	466	241	451	264	430	515	153	
Bolivia	253	324	238	343	251	308	219	339	235	317	220	328	212	309	340	220	298	223	297	209	306	210	430	515	153
Southport I	346	208	363	193	365	175	341	185	384	147	392	152	335	165	172	377	159	347	143	343	146	348	477	50	
Southport II	446	132	459	117	464	103	441	103	477	76	479	85	434	97	105	466	104	447	90	447	85	432	477	50	
Oak Island	110	113	109	109	129	90	125	79	127	76	139	75	120	78	80	113	99	119	75	120	71	116	170	41	
Mosquito	92	50	80	55	78	43	64	70	68	54	62	64	62	52	65	73	45	73	41	66	47	60	87	39	
Supply	253	218	201	257	220	211	217	229	212	225	208	259	218	205	222	219	195	262	190	208	223	221	430	515	153
Secession	264	280	291	251	311	221	274	243	296	211	280	253	303	188	208	299	178	356	193	260	227	285	430	515	153
Shalotte	229	381	263	350	268	329	279	323	239	330	168	442	242	319	327	233	306	264	314	230	349	242	430	515	153
Frying Pan	325	211	350	203	350	188	334	194	332	190	261	283	334	176	193	329	176	335	190	304	215	328	430	515	153
Grissettown	191	209	196	208	191	196	197	201	176	207	164	232	171	204	204	174	199	172	202	195	212	186	260	115	
Shingletree	224	196	249	172	242	167	231	177	221	178	229	187	220	161	161	224	167	219	189	219	189	224	430	515	153
Longwood	138	83	129	94	130	90	102	106	109	103	111	99	105	97	97	107	98	96	97	107	114	107	164	52	
Ash	138	305	171	291	178	277	141	287	143	297	145	293	144	245	259	152	255	152	258	148	275	174	231	169	
Waccamaw	69	167	70	169	75	155	72	156	71	160	69	159	69	149	149	70	150	71	150	71	159	88	430	515	153
Exum	75	70	84	67	83	60	68	69	72	74	61	76	67	67	66	69	61	73	59	71	66	84	97	31	
TOTALS	4214	3708	4192	3751	4334	3311	4129	3419	4294	3237	4032	3586	4117	3170	3388	4103	3009	4208	2992	3956	3266	4034	430	515	153



President Lyndon B. Johnson

Governor Dan K. Moore

Brunswick county went along with the State of North Carolina and the nation in the general election Tuesday to give a convincing majority to Democratic candidates.

The Johnson-Humphrey ticket scored a 4,214 to 3,708 victory in this county to go along with their victory in North Carolina and their sweep of votes throughout the United States.

Dan K. Moore polled 4,192 votes to 3,751 for Robert Gavin in Brunswick county voting as Moore won easily on the state level. Robert Scott, Democratic candidate for lieutenant governor, led all contestants with 4,334 votes to 3,311 for Cecil Bell, his Republican opponent.

All Democrat candidates for county office were elected by a convincing majority, ranging from a 1,057 plurality for Register of Deeds Durwood Clark over Betty Warren to a 446-vote majority for Clinton Bellamy over Carl Andrews.

It was a record vote for Brunswick county, with almost 8,000 voters going to the polls.

The School Improvement Bond plan received about a 4 to 1 vote of approval in Brunswick county and also gained approval throughout the state.

Because of the size of the vote, the count carried on into the morning hours, and some of the returns are incomplete, including a complete tally on the state ticket and some of the precinct returns on the bond election. No township election returns are included.

In the race for House of Representatives Odell Williams polled 4,129 votes to 3,419 for Harold Willets.

Clark polled 4,294 votes for Register of Deeds to 3,237 for Mrs. Warren.

Bellamy had 4,032 votes for Recorder's judge to 3,586 for Andrews.

In the race for county commissioner in Northwest township G. T. Gourk 4,117, T. J. Gillis 3,170; Town Creek, James T. Huffham, 3,388; Smithville, T. S. Bowmer, 4,103; Claude Harrelson 3,009; Lockwoods Folly, Clemit Holden 4,208; Martin Nielsen, 2,992; Shalotte, D. B. Frink 3,956; Rudaw Russ 3,266; Waccamaw, Parley Formyduval 4,034.

Registrars will meet tomorrow (Thursday) at the court house in Southport to canvass the returns and to turn in the registration books to the board of elections.

### Southport Lady New Coordinator

A Southport woman has recently been appointed guidance coordinator for the white schools of Brunswick county, says Superintendent A. W. Taylor.

Mrs. Irene Mankins serves in the same capacity in the Negro schools.

Mrs. James T. Barnes will visit the five white high schools to coordinate the work of the counselor in each school, the supervising of testing programs in high school and the college and training entrance requirements.

"Students need help in analyzing their educational and vocational potentialities and in learning about opportunities for full- (Continued On Page 4)

### Security Savings & Loan

## Office At Shalotte

### Time To Justify, REA Members Told

The Savings & Loan Association founded in Southport 53 years ago by a group of thrift-minded, development conscious local citizens takes a drastic new step this week with the opening of a second office at Shalotte.

Not only that, but as the move is made the name will be changed from Southport Savings & Loan Association to Security Savings & Loan Association, probably in order to diminish any sales resistance that might be involved in having the word Southport as a part of the firm name of a Shalotte business. As a matter of fact, it is the second time within the past 10 years that the name of the association has been changed, for it started out in life as the Southport Building & Loan.

The Shalotte office will be quartered in the building formerly occupied by the Waccamaw Bank & Trust Co. D. H. Hawes, Bolivia merchant and former Brunswick county tax collector, is the new assistant secretary-treasurer and will be in charge of the Shalotte office.

The new branch will be open for business tomorrow (Thursday) and registration will be in progress for a period of 10 days before awarding prizes in connection with the formal opening on November 11.

Current assets of the association are \$3,800,000 as compared with assets totaling about \$240,000 in 1911.

H. T. St. George is president of the association; D. C. Herring is vice-president; W. P. Jorgensen, secretary-treasurer; E. H. Kirby, H. Foster Mintz, L. J. Hardee and S. B. Frink, directors.

There have been just five presidents in the 53-year history of the association. They were M. C. Guthrie, J. A. Northrop, J. N. Daniel, R. C. Daniel and St. (Continued On Page 4)

### Southport Trawler Sinks In Florida

The Dusty, 60-foot trawler of the Southport shrimping fleet owned by Merritt Moore, ran around on a reef at the entrance of the inlet at New Smyrna Beach Friday and was lost. With the heavy seas subsiding, salvage operations were being undertaken Monday.

Two members of the crew, Ben Garrett and another Southport man, got off without injury. The Dusty left Southport about two weeks ago and had stopped at Fernandino before proceeding outside to New Smyrna, where the Moore boats were to work until Christmas.

The vessel was valued at more than \$20,000 and was not insured.

### Letter Thanks Crash Rescuers

Joe Mickey of High Point is recovering in a hospital in his home city from injuries sustained in an airplane crash near Southport on the evening of October 9. He has dictated the following letter of appreciation to his wife:

"On Friday evening, October 9, just after the sun had set I was (Continued On Page Four)

A challenge demanding justification for another 25 years of service marked the annual meeting Friday of the Brunswick Electric Membership Corporation.

The REA, declared William T. Crisp, general counsel for the state association of electric co-ops, was founded by legislation and it will die by legislation.

Accordingly, Crisp emphasized, the continued existence of BEMC depends on how hard you work to maintain the co-op that started out with 150 members and about 150 miles of lines 25 years ago and now has grown to 2,000 miles of lines with over 11,000 members.

The guest speaker pointed out that private power is moving into REA territory and "they intend to take you over for they are big and they have plenty of money to spend and they will spend it."

The occasion was dubbed as the Silver Anniversary, 25 years since the co-op was originally established with Dr. E. D. Bishop as the first and continuing executive director.

Congressman Alton Lennon, in brief remarks, reminded the 4,000-plus members present that 25 years ago there was darkness and silence in rural America.

Today, Lennon declared, there is light and power and the hum of contented voices in rural America. And REA, he said, is (Continued On Page Four)

### Southport Man Takes Own Life

A Southport man entered a local grocery store-service station early Friday night, sat down and shot himself in the head.

The death of Maness Garfield Cole, 57, was ruled a suicide by County Coroner Lowell Bennett of Shalotte. He added that no inquest would be held.

Police Chief Herman Strong said Cole entered Lee's Grocery, located at the edge of the Southport city limits, about 7:45 p. m. Friday, sat down, told everyone good-bye and committed suicide by shooting himself in the head with a .32 calibre pistol. Mrs. Mozele Lee and Mrs. Nancy Davis witnessed the shooting but were helpless to prevent it.

Chief Strong said he could give no reason why Cole would take his own life. Earlier Friday, he had been involved in a minor automobile accident and had been cited to court for following too closely, the chief said. Cole also had trouble with his legs, he added.

Cole lived in rented room in a house on Moore street in Southport. He was employed by the State Highway Commission as a bridge tender.



### Southport Homecoming Queen

MISS BRENDA JORDAN was crowned 1964 Homecoming Queen for Southport High School Friday night during halftime festivities at the football game. She is a senior and is the daughter of Mr. and Mrs. Clay Jordan of Long Beach. (Staff Photo by Allen)



### Shalotte Homecoming Queen

MISS YVONNE CHADWICK was crowned Homecoming Queen during halftime ceremonies Friday night at the Whiteville-Shalotte football game. She is the daughter of Mr. and Mrs. James A. Chadwick of Shalotte Point. (Staff Photo by Allen)

### Brief Bits of NEWS

#### HISTORICAL SOCIETY

The Brunswick County Historical Society will meet Monday evening Southport in quarterly session. Plans will be completed for the 200th Anniversary celebration for Brunswick county on November 15 at Brunswick Town.

#### HOLIDAY WEDNESDAY

The Waccamaw Bank and Trust Company at Southport and Shalotte and the security Savings and Loan at Southport and Shalotte will be closed all day Wednesday in observation of Veteran's Day.

#### BOARD MEETING CHANGED

The Brunswick County Board of Education will hold its regular meeting on Tuesday, November 10th. The change was necessary due to Election Day on November 3.

#### PLANS VISITS

Congressman Alton Lennon has announced that he will visit Brunswick county in December. He will tour the county December 16 and be in the Courthouse in Southport December 17.

## Adult Education Program Expands

Interest in adult education is once again on the upswing, says Assistant Superintendent of County Schools Bill Williams who has six courses underway and at least four more due to start within the next two weeks.

Commercial courses in typing, bookkeeping, and related areas have to this point been in greatest demand Williams declared. "Two vocational courses, welding and bricklaying, are currently operating. One academic course is operating and another is scheduled to begin this week.

"We have been a little surprised that there have not been more requests for academic courses, he said. "Perhaps it is because the public has not become sufficiently aware of what is available."

The academic program for adults consists of three major types of courses; literacy courses for those wishing to learn to read and write or to gain proficiency in reading and writing; pre-secondary courses for those wishing to review the grammar school curriculum; and secondary edu-

## 4-H Achievement Night Tuesday

Final plans have been made made for the 1964 Annual 4-H achievement Program to be held at the Extension Service Building in Supply on November 10, beginning at 7:30 p. m. During the program the 4-H members will be awarded for the accomplishments that they made during the year.

Leaders and merchants will also be recognized for a job well done of leading 4-H'ers and backing the program.

The following committee assignments have been made: Chairman and co-chairman of over-all program, A. S. Knowles and Mrs. Knowles; Program committee, Miss Billie F. Hamilton, chairman, and Mrs. Early Smith; arrangements and decorating committee, Burnett Coleman, chairman, Mrs. Betty Cheer and Mrs. Eva Gray; recreation committee, A. S. Knowles, Mrs. A. S. Knowles and Bolivia Senior Club members. Refreshment committee, Miss Hamilton, chairman, Mrs. Estelle Hewett and Mrs. Betty Galloway; publicity committee, Mrs. Freeman Hewett, chairman, and Burnett Coleman; clean-up committee, (Continued On Page Four)

Principal Winfred B. Johnson has announced that a course in Secondary Education I will begin a 7:30 Thursday at Shalotte High School. The class was organized at a general meeting held at Supply on Wednesday and is scheduled to meet for two hours each Tuesday and Thursday until a total of 72 clock hours have been completed, which will mean a duration of approximately 18 weeks. William Simon will be the (Continued On Page Four)

## TIME and TIDE

It was November 4, 1959, and Brunswick county citizens supported all nine bond proposals for state improvements, including port development for Southport, but two were rejected state wide. Plans were announced to lay the cornerstone at the proposed Yaupon Beach Methodist Church Sunday.

Old age, survivor's and disability insurance coming into Brunswick county each year amounted to \$714,000, the Social Security Commission announced. The State Highway Commission said \$373,468.42 would be spent on secondary roads in Brunswick county by June 30, 1960.

It was November 3, 1954, and all Democrats swept into office in the general election Tuesday with majorities ranging from 600 to 11 votes. It was announced that federal disaster funds would be made available to Hurricane Hazel victims, recover from the storm. Good catches of king mackerel were recover from the storm. Good catches of king mackerel were being made by party boats. Misses Sallie and Margaret Tomlinson of Fayetteville, who were among the first to build waterfront cottages at Long Beach, were rebuilding.

It was November 2, 1944, and W. S. Wells, Southport seafood dealer, announced he was changing his three blade pro- (Continued On Page Four)

## Tide Table

Following is the tide table for Southport during the week. These hours are approximately correct and were furnished The State Port Pilot through the courtesy of the Cape Fear Pilot's Association.

HIGH	LOW
Thursday, November 5	
8:26 A. M.	2:12 A. M.
8:34 P. M.	2:48 P. M.
Friday, November 6	
9:30 A. M.	2:50 A. M.
9:10 P. M.	3:29 P. M.
Saturday, November 7	
9:40 A. M.	3:28 A. M.
10:45 P. M.	4:08 P. M.
Sunday, November 8	
10:17 A. M.	4:03 A. M.
11:22 P. M.	4:50 P. M.
Monday, November 9	
11:00 A. M.	4:42 A. M.
11:04 P. M.	5:33 P. M.
Tuesday, November 10	
11:40 A. M.	5:24 A. M.
11:51 P. M.	6:21 P. M.
Wednesday, November 11	
12:29 A. M.	6:11 A. M.
	7:14 P. M.