

New Problems Face Tobacco Growers Soon

Tobacco farmers in this country may be faced with another crisis, and this time it could be one bred outside of the United States.

A large delegation of farmers, tobaccoists, warehousemen and agricultural extension workers were advised of the threat Friday during the annual District 4 meeting of the Flue-Cured Tobacco Cooperative Stabilization Corporation.

American flue-cured tobacco growers are helping to solve their own dilemma—producing too large a quantity with deficient quality. The crop last season proved that the new acreage-pounding control system prodded farmers into production of quality leaf, and the amount of the crop taken by stabilization fell.

Fred G. Bond, assistant general manager of Stabilization, said the cooperative only took 6.2 per cent of the 1965, and that the newer crop is in greater demand by manufacturers.

"We showed that we're headed in the right direction," Bond said. He added, "Stabilization receipts were more balanced in 1965 than in an recent years." Markets were steady through the season, he pointed out.

But there's a gloomy side that may be facing American producers, the audience here in Whiteville was advised.

There are two strong groups against tobacco:

Health agencies which "have slandered us for years," reported W. H. W. Bill Anderson, executive secretary of the Tobacco Growers Information Committee. "...and those responsible for putting higher and higher taxes on tobacco products."

On the health angle Anderson pointed out that much of the material presented to Congressional committees studying whether tobacco use contributes toward lung cancer "contains inconsistencies, and many of the reports are now in agreement."

Anderson said tobacco manufacturers are spending a great deal of money for their own study into the matter. He acknowledged, "We of course do not want to sell anything damaging to health."

It is Anderson's opinion that there are groups out to get prohibition of tobacco the way Carrie Nation did liquor, by levying of higher taxes on tobacco products. In 22 states taxes on cigarettes and other tobacco products were raised in 1965.

In New York City the price of a pack of cigarettes at Grand Central station is 43 cents, of which 24 cents is for federal, state, and city taxes. In New York the sales of cigarettes decreased by 21 per cent during the last six months of 1965.

"So you see, the 900 million retail outlets handling tobacco products will suffer along with our 750,000 tobacco farm families," Anderson said.

Through taxation the respective governments "are about to kill the goose that laid the golden egg," Anderson concluded.

John D. Palmer, president of Tobacco Associates which serves

(Continued On Page Four)

Brief Bits Of NEWS

THURSDAY MEETING

A meeting of all property owners whose land fronts on the Cape Fear river will be held at the City Hall tomorrow (Thursday) evening to discuss plans for depositing dredging spoil.

DR. HALL COMING

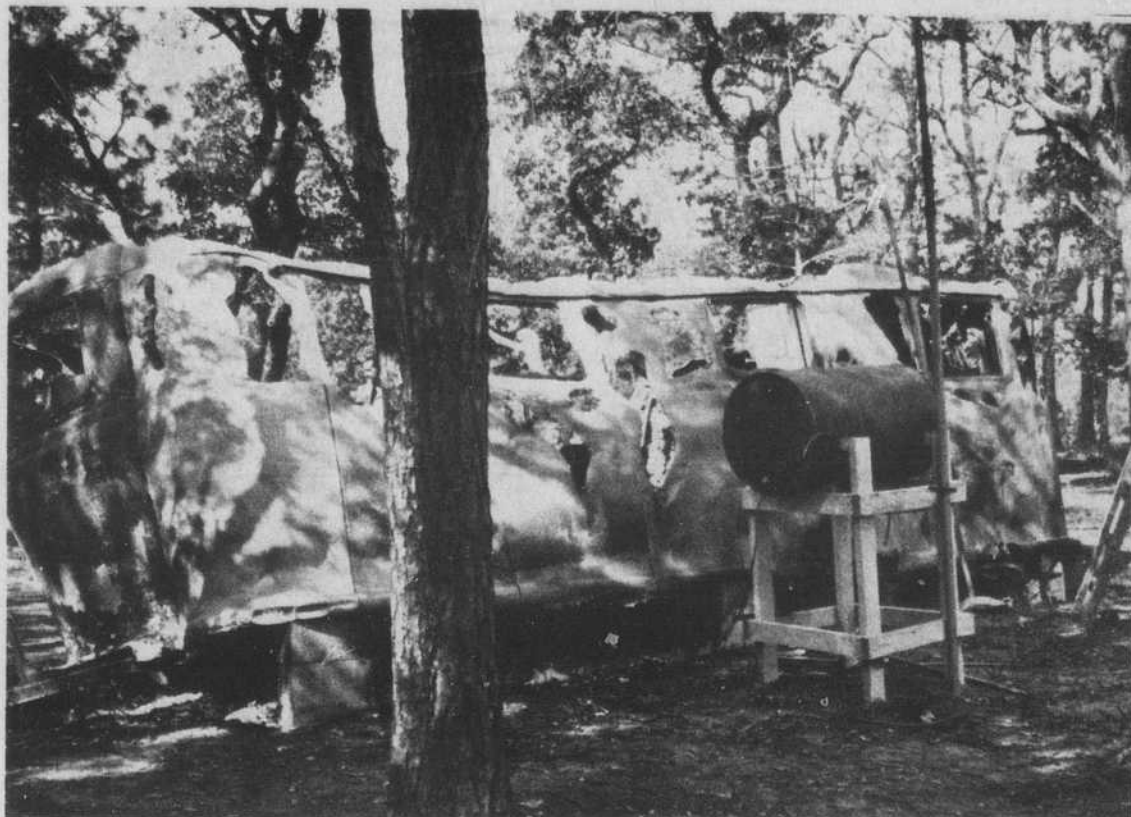
Rev. B. Frank Hall of the Pearsall Memorial Presbyterian Church in Wilmington will be the guest speaker at the Southport Presbyterian Church for Holy Week services April 3-8.

BAKE SALE

The Daughters of America will sponsor a bake sale Saturday morning, starting at 9 o'clock, next door to the post office. In case of rain, it will be held at the Daughters of America Hall on Howe street.

COURT IN SESSION

A civil term of Brunswick county Superior court is in session here this week with Judge Henry A. McKinnon, Jr., of Lumberton presiding. The case of Thomas vs Swain et al has taken up the first two days of this term and was still underway this morning.



Where Man Died In Trailer Fire

BLAZE—This is the trailer home of Earl Napier, Long Beach resident, who was burned to death as he lay in his bed late Friday night while the trailer was gutted by fire of undetermined origin.

Friday Night Trailer Fire Causes Death

LONG BEACH — Earl Napier, a 41-year-old plumber of Long Beach, burned to death Saturday morning in his trailer.

According to Long Beach Police Officer Aubrey Hickman, the fire started after 1:15 a.m., possibly from an overheated stove.

The body was discovered by W. L. Jones who had heard reports of smoke coming from the trailer. Upon investigation, Jones found the badly burned body of Napier on the bed.

Brunswick County Coroner Lowell Bennett said the death was accidental.

Napier is survived by his father, Rubin Napier of London, Ky., and a sister, Carol Napier of Madison Heights, Mich. Burial will be in London, Ky.

New Inlet Is Turned Down By Engineers

The U. S. Engineers have turned down a request for opening New (Corncake) Inlet.

This information was obtained this week by Southport City Manager C. D. Pickrell in correspondence with the office of Congressman Alton Lennon.

Following is the text of a letter from Col. Beverly C. Snow, District Engineer, to Congressman Lennon regarding the project:

"I am furnishing the following information concerning the Section 107 small navigation project for Kure Beach (New Inlet), North Carolina, in accordance with my telephone conversation with Mr. Snow of your office on 14 February 1966.

"A Reconnaissance Report on Kure Beach was submitted to the Division Engineer on 28 February 1965 and has been reviewed by the Chief of Engineers.

"The Chief of Engineers and the Division Engineer have concurred in the findings of the report that a provision of deeper channels in the natural waterways in marine marshes behind the barrier reef above Cape Fear to and through New Inlet is not feasible, from an engineering and economic standpoint at this time. In brief, the history of New Inlet, since construction of the rock dam in the late 1800s to divert the rain flow of the Cape Fear River through its primary south opposite Fort Caswell, indicates that the costs for dredging to maintain a channel through this shifting, shoaling, and sometimes closing inlets would far exceed the expected annual benefits from commercial fishing and recreational boating activities.

"If benefits, in addition to those presented at and after the 21 September 1964 public hearing, can be developed by local interests, a new study to revise the reported benefit-cost ratio could be initiated."



Join Library \$100 Club

FACT—"A library in the county helps real estate sales" says A. A. Martin, president of Brunswick County Realtors, as he and his partner, Philip King, present their check for \$100 to Eugene Tomlinson, chairman of the Library Building Fund Committee. Through this contribution Martin and King became the first local member of the "One Hundred Club".

Dedication For Ferry Wednesday

The Southport-Ft. Fisher Ferry will be dedicated at 2:00 p. m. next Wednesday according to a joint announcement this week by George Rourk, chairman of the Brunswick County Board of Commissioners, and Dr. Joseph W. Hooper, Jr., chairman of New Hanover County Board of Commissioners.

The dedication ceremonies are scheduled at the Southport Ferry Commission Docks and the public is invited.

The dedication address will be given by Joe Hunt, chairman of the North Carolina Highway Commission. Other participants in the program in addition to Rourk and Hooper are Highway Commissioner Ashley Murphy, E. H. Baggs, manager of ferry operations, Senator J. Vivian Whitfield of Wallace, Mayor Eugene B. Tomlinson, Jr., of Southport and Mayor M. L. Lowder of Kure Beach.

The Rev. L. D. Hayman, retired Methodist minister of Southport, will give the invocation.

The Southport-Ft. Fisher Ferry, which started operating



JOE HUNT

on February 9 links the two points on the Lower Cape Fear River. The citizens of two counties have worked for many years to secure service between these two points.

The dedication ceremonies (Continued On Page Four)

Time And Tide

The Pilot for February 26, 1936 reported a tragedy that had occurred the week before. Four men had been drowned when the small boat in which they were traveling from a waterfront dock to a ship anchored in the river capsized. One was Bill Creech, Southport man. Another unusual occurrence on the waterfront has been the arrival of an old French minesweeper on Sunday afternoon.

A light snow had fallen in Brunswick county on the previous Friday. Southport was to be the scene of the Brunswick County Basketball Tournament, and a skunk whose foot had been frozen to the steel rail on the W.B. & S. railroad track had taken out his spite upon the oncoming locomotive as it bore down upon him to amputate his paw.

An editorial in a Charleston, S. C., newspaper had urged the development of military defense installations at Southport, and that made headlines in The Pilot for February 26, 1941. Quail hunters were disturbed over the prospects of having their favorite sport limited to three days per week during the coming season by virtue of a bill before the Legislature.

Bolivia boys and Waccamaw girls had been established as favorites in the Brunswick County Basketball Tournament which was being held that week in the Shallotte High School gym; the late George R. Foulks, Jr., had moved from Winnabow; and a Whiteville automobile dealer was making a frantic appeal for 50 used cars.

On February 20, 1946, a front page announcement told of the operation of the G. W. Kirby & Son Store at Supply by Harry L. Mintz, Jr. A former Southport resident, George W. Rappleyea, appeared in a front page photo, along with a story telling of his activities as a vice-president of the Higgins Industries, wartime boat builders.

James Fergar of Orton Plantation has been named president of North Carolina Association of Nurserymen; R. I. Mintz was heading the Red Cross Fund Drive; and a new beach development was in prospect for Brunswick county, this one at Gause Beach—now Ocean Ilse.

(Continued On Page Four)

Name Members Of Commission In Development

With the appointment of two members to the Brunswick-New Hanover Maritime Commission by the New Hanover board of county commissioners, membership of that body, created special act of the 1965 General Assembly, has been completed. Development of Eagles Island is the immediate objective of the bill.

The New Hanover commissioners appointed W. S. R. Beane and W. E. Sisson to the development group.

Beane is president of Heide Co., and Sisson is president of the Terminal City Oil Co. Both have an interest in seeing useable waterfront property developed.

The two appointed from Brunswick County are C. E. Mitchell of Leland and Earl Bellamy of Shallotte.

Mitchell is general manager of N. C. Equipment Co., dealing in heavy construction equipment, and Bellamy is manager of the Atlantic Telephone Co-operative.

Gov. Dan K. Moore appointed Foster Mintz, part-owner of the Elmore Motor Co., in Bolivia and John Van B. Metts, a Wilmington insurance man.

Eagles Island lies between the Brunswick and Cape Fear Rivers, in both counties. The Commission, a public corporation, is to develop the island across the Cape Fear from Wilmington to whatever use it will be found adaptable.

The bill authorized the commission to borrow up to \$50,000 from the two counties which will benefit from riverside development on the island.

Fox Hunt Has Another Crowd In Attendance

Large crowds congregated at Long Beach Friday and Saturday for the Annual Washington's Birthday Fox Hunt-Round-Up, only this time the hunters and dogs far outnumbered the foxes.

Luck Friday morning was pretty good, until rain came and washed out all further scent. Saturday was a better day, and the hunt continued. However, the results were a far cry from the time five years ago when there were so many foxes the dogs were not able to concentrate on any one animal. Not more than a half dozen foxes were tailed during this year's hunt.

But if the foxes were scarce, the same was not true of the hunters were here in great number, and they spent their idle hours during the rainy day, and a good part of the night, sitting and talking about their hunting experiences and their favorite dogs.

Social events spiced the occasion was the Hound's Hair and Chowder session, followed by a dance Friday night.

Plans are being made to hold the event again next year.



Pageant Contestants

ENTRIES—Four new entries were received this week in the Miss Brunswick pageant. Upper left is Jeanne Marie Brown of Southport; right above is Gloria Annette Sellers of Winnabow; below, left, is Priscilla Gay Hewett of Supply; and right is Eunice Yvonne Chadwick of Shallotte.

Four Seek Title Of Miss Brunswick



LEONNE ARNTSEN

Arntsen Girl To Chapel Hill

Leonne Arntsen along with three other juniors from the New Hanover High School has been selected to attend the Eighth North Carolina Junior Science and Humanities Symposium at the University of North Carolina at Chapel Hill April 17-19.

The purpose of the symposium is to provide talented students with opportunities to observe scientists in laboratories, to hear lectures and to discuss various projects.

Delegates will stay at the Jack Tar Hotel in Durham and have private cars for transportation. The U. S. Army Research Office will finance transportation, housing and food costs.

Miss Arntsen is a former student of Southport High School.

Board Backing Clean-Up Move

Members of the board of county commissioners in session here last week passed a resolution supporting Governor Dan K. Moore's stand on the anti-litter program being pushed throughout the state. Text of the resolution follows:

"WHEREAS, it was brought to the attention of the Board of County Commissioners of Brunswick County in session February 7, 1966 that the Honorable Governor Dan K. Moore of the State of North Carolina had pointed out the need and requested the aid of all the Board of Commissioners in the State to help in a campaign to clean up and to help prevent the deplorable condition of litter and other related matter being strung along

(Continued On Page Four)

Offer Nursing Scholarship To Brunswick Girl

Mrs. E. C. Harelson, president of the Southport Woman's Club announced this week that a nursing scholarship in the amount of \$750 is being made available through the club again this year.

The award is open to any girl, residing in Brunswick county, and a high school graduate, who will enter training to become a registered nurse.

Mrs. Harelson stated that the scholarship, in the total amount of \$750, may be used at any North Carolina Accredited School of Nursing. It will be paid over a three or four year period, depending upon the training course to which the recipient is admitted. Funds may be used for tuition, uniforms and books.

Application blanks for the scholarship may be obtained from Mrs. James T. Barnes or Mrs. Irene B. Hankins, Brunswick county Guidance Counselors. They may also be obtained by writing Mrs. Phillip King, chairman, Scholarship committee, Southport. All completed applications must be filed with the committee by April 16.

Judging will be on the basis of scholastic achievement, financial need and moral integrity. Finalists will be expected to meet with the Scholarship Committee when so requested.

Mrs. Harelson stated that while it is not made legally binding, the Southport Woman's Club expects the person receiving the award to return to Brunswick county to work upon completion of her training.

This is the fifth consecutive year nursing scholarships have been awarded by the Southport Woman's Club.

Ports Program Now Expanding

The North Carolina ports are now in the process of the largest expansions at Morehead City and the Wilmington in the history of the ports.

At Southport a new boat harbor was opened to serve commerce and pleasure craft in the region, at a total cost of \$600,000.00.

At Wilmington, projects completed this last year, or in progress are: 1100 ft. dock extension; 120,000 sq. ft. transit shed; 100,000 sq. ft. back-up warehouse; 75,000 sq. ft. addition to existing cargo shed, and the N. C. Maritime Building, housing port related activities, the total cost of all this amounting to \$5,050,000.00.

At Morehead City, projects completed this past year, or in process are: 100,000 sq. ft. warehouse; 1,100 extension of wharf line, 120,000 sq. ft. transit shed; 100,000 sq. ft. warehouse; an addition to the water system, all totalling \$4,500,000.00.

Also, in final stages of planning is \$9,500,000.00 bulk handling facility for phosphates and similar commodities.

This \$19,650,000.00 expansion program at Wilmington, Morehead City and Southport was carefully considered and planned in view of the healthy growth of world trade and domestic waterway traffic now taking place in North Carolina.

While the State Ports were showing record increases, North Carolina, as a state, rose from fifteenth to eleventh in international trade, and for the second successive year this commerce tallied over \$1,000,000,000.00.

Tide Table

Following is the tide table for Southport during the week. These hours are approximately correct and were furnished The State Port Pilot through the courtesy of the Cape Fear Pilot's Association.

HIGH	LOW
Thursday, February 24,	
10:09 A.M.	4:16 A.M.
10:27 P.M.	4:40 P.M.
Friday, February 25,	
10:39 A.M.	4:58 A.M.
11:03 P.M.	5:16 P.M.
Saturday, February 26,	
11:21 A.M.	5:40 A.M.
	5:58 P.M.
Sunday, February 27,	
	6:34 A.M.
12:09 P.M.	6:52 P.M.
Monday, February 28,	
12:57 A.M.	7:40 A.M.
1:15 P.M.	7:52 P.M.
Tuesday, March 1,	
2:03 A.M.	8:52 A.M.
2:27 P.M.	9:04 P.M.
Wednesday, March 2,	
3:15 A.M.	9:04 A.M.
3:39 P.M.	9:10 P.M.

Name Chairman For Shallotte

The chairman of the 1966 Heart Sunday appeal in Shallotte will be Mrs. Leland Massingale according to Mrs. Freeman Hewett, Brunswick Heart Fund Chairman.

State Heart Sunday Chairman is Mrs. Lucy Haire of Fayetteville, reigning "Mrs. North Carolina." Mrs. Dan Moore is Mrs. Haire's honorary co-chairman.

Heart Sunday will be observed in Brunswick as the high point of the Heart Fund campaign in February, designated Heart Month by Governor Moore. Volunteers will call on their neighbors on February 20. A volunteer corps is being recruited to cover the residential sections.

Among the new chairman's duties will be that of assembling a group of district captains to coordinate activities of the volunteers. The volunteers will serve a dual purpose. They will distribute information telling how to safeguard the lives and hearts of all members of a family. They will also receive Heart Fund contributions.

Proceeds of the drive are used to support research, education and community service activities of the Brunswick Heart Association for more than half of all deaths in this county. The Brunswick Heart Association is part of the North Carolina and American Heart Associations.