

Southport - Fort Fisher Ferry Returning

EXPECTED — This is the Southport-Fort Fisher Ferry that has been in drydock at New Bern for the past month. It was expected to be back to resume its

regular winter schedule this week but the crew will not go for her until Friday. Operation now is expected to resume the first of next week.

Back Next Week

Delay In Return Of Ferry Boat

Marine Officer Is Found Shot Near Bolivia

Lt. Clyde Elmer Prince, a member of the U. S. Marine Corps stationed at Camp Lejeune, was found shot to death last Wednesday in his camper truck that had been parked for two days at the roadside park near the Bolivia fire tower.

Coroner Lowell Bennett investigated and reported that death was due to a self-inflicted gunshot wound. Bennett said that discovery of the body was made by Rodney Gray, Shallotte oil tanker driver. He had seen the camper trailer drive into the roadside park early Monday morning. When it remained there all that day and all day Tuesday, Gray decided on Wednesday to investigate. When he did he discovered the body of the Marine officer in the sleeping compartment of the trailer. He called the Highway Patrol.

Bennett said that it appeared that Lt. Prince had gotten out of the front seat of his truck, entered the rear compartment and had laid down on a bunk before placing the muzzle of a 306 rifle under his chin and pulling the trigger.

The coroner notified authorities at Camp Lejeune, who reported that Lt. Prince recently had returned from duty in Vietnam. He was divorced and has one son who lives in California. His body was buried in the National Cemetery at New Bern.

Brief Bits Of NEWS

SURRENDERS
Thomas Dixon, former employee at the Lincoln High School lunchroom who faces charges of embezzlement, walked in and surrendered Tuesday to Sheriff Harold Willetts.

FRIDAY DANCE
Members of the Southport Junior Woman's Club are sponsoring a Christmas Ball Friday night at a Bolling Spring Lakes Country Club, with all proceeds to go to the Brunswick County Library Building Fund. Music will be furnished by the Wilmington Community Orchestra.

OYSTER ROAST
Mt. Pisgah Baptist Church near Supply will sponsor an oyster roast on Saturday at the Percy Suggs Store building, located one-half mile east from US 17 on the Holden Beach road, from the hours of 5 to 9 p.m. Homemade cakes and pies will also be on sale. The sale will also include fruit cakes which will be a nice treat for the coming holidays. All proceeds will go to the New Church Building Fund. The public is invited.

County Officials Sworn In Monday

Newly elected county officials were sworn in here Monday before J. E. Brown, clerk of Superior court.

The new officers include Sheriff Harold Willetts, Judge Clinton Bellamy, Coroner Lowell Bennett and County Commissioners D. B. Frink, George Rourk, Clemet Holden, John L. Barbee and V. A. Creech.

Sworn in as deputies to serve under Sheriff Willetts were Lonnie Vick Brown of Holden Beach, chief deputy; D. W. Long of Free-land, who was an unsuccessful candidate for county commissioner; John E. Jones of Leland; and H. G. Ratcliffe, whose duties have not yet been defined by Sheriff Willetts.

When the board of commissioners convened the first order business was organization. Barbee was nominated by Frink, seconded by Holden and the vote was unanimous. The new chairman is the youngest member of the board, but was high man in the recent general election. He served the last three months of the unexpired term of T. S. Bowmer when the latter resigned of this fall to accept a position with the Community Action Program.

Upon motion by Holden, seconded by Frink, D. T. Clark, register of deeds, was elected unanimously to serve as clerk to the board.

Upon motion by Frink, seconded by Holden, E. J. Prevatte was unanimously selected county attorney.

Upon motion by Creech, seconded by Frink, A. H. Gainey, Jr., was unanimously reelected solicitor of Recorder's court.

Upon motion by Holden, seconded by Frink, J. E. Brown was appointed custodian of county property.

Upon motion by Creech, seconded by Holden, the Waccamaw Bank and Trust Co. was designated custodian of county funds.

The commissioners established the Christmas holiday period to extend from December 23 through December 27.

Archie Martin, Agricultural Extension Agent for Brunswick county, appeared before the board and submitted his annual report. The board voted to ask the Employment Service Division of the Employment Security Commission to conduct a labor survey in Brunswick county. It is expected that this work will begin in January and will last for about three months.

Coast Guard Flotilla Meets

The Southport Flotilla of the U. S. Coast Guard Auxiliary meets Thursday at 7:30 p.m. at the Boat Harbor Building. All members of the public, especially those who own a boat at least fourteen feet long, are invited to join.

As most of the present members have almost finished their examinations, the Southport flotilla expects to start functioning officially with many boating events in the early part of 1967. One of the main items on the agenda for the next meeting is the completion of examinations for candidate members. Any person may take this examination free of charge. Flotilla Commander Norman M. Hornstein says, "If you are one of the crowd, join the Auxiliary and attend the course in celestial navigation that will be given next year."

Little Prong Gives To Library

Little Prong Baptist Church, Ash, became the first church in Brunswick county to contribute to the building fund of the new county library. Under the leadership of Rev. Willie Frink, members of the Little Prong congregation raised \$100 toward the new building.

Other members of the \$100 Club in recent weeks are: Mr. and Mrs. John G. Swan, Mr. and Mrs. James C. Bowman, Frank O. Sherrill and Mr. and Mrs. Harold F. Aldridge.

Out-of-town contributions have come in from M. M. McHose, New Shrewsbury, N. J.; John W. Powell, Whiteville; Henry von Oesen and Associates, Wilmington; and Friendly Department Store, Wilmington.

William Smalley of Island Enterprises, Oak Island, has given to the building fund, as have Holloway Furniture Company, Cromer's Real Estate, Dan Shannon and Carl Stidham, all of the beach area.

John F. Baker is collecting donations in the Bolivia community and has turned in \$53.00. He reports that he has not finished canvassing the area.

In Southport, Mr. and Mrs. Worley of Pines Drive-In have given \$50.00. A number of smaller contributions have been received from Southport residents.

Members of the Building Fund Committee are enthusiastic over the prospect of having all local funds in hand within the coming few weeks so that attention can be turned to actual construction early in 1967.

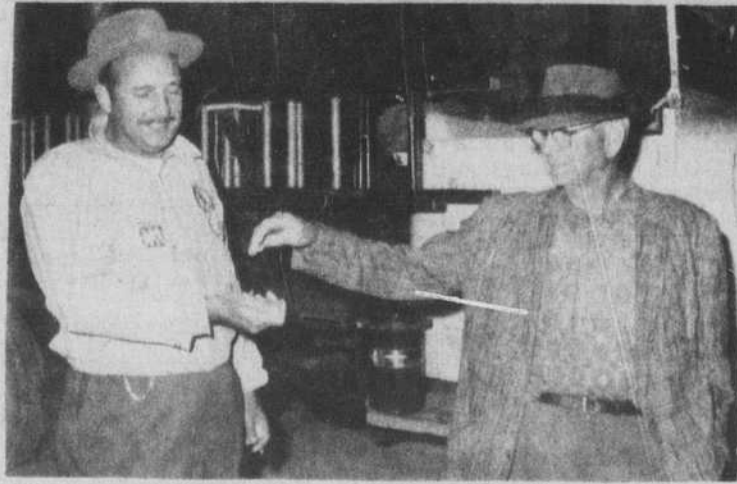
Jurist Recalls Statement Of Judge Cranmer

As a two weeks term of civil court convened here Monday morning Judge Leo Carr of Burlington took occasion to publicly thank Sheriff E. V. Leonard for his long and faithful service as a Brunswick county law enforcement officer. The presiding jurist also wished him good health and good luck in his retirement.

Judge Carr then extended a gracious welcome to Sheriff Harold Willetts as an officer of the court and expressed the conviction that he will conduct the affairs of his office on the same standard of efficiency.

Judge Carr then turned to the portrait of the late Judge E. H. Cranmer which hangs in the courtroom and said that he was reminded of the great wisdom of remarks he had heard the former Southport man make from the bench.

He recalled that Judge Cranmer always had taken the position that it is important for every man to own some property. "There is a too large percent of our population today who does not make use of this privilege," Judge Carr said. "When we go to vote, the vote of a man who owns nothing counts the same as the vote of a man who is a" (Continued on Page 4)



Keys To Fire Station

PRESENTATION — James Kyle, member of the board of commissioners for the Town of Long Beach, is shown here presenting the keys to the recently completed new fire station to Carl Watkins, chief of the Long Beach Fire Department. (Shannon Photo).

Public Hearing On Road Project

Change Made In Clinic Schedule

A change in the clinic schedule for Shallotte Health Center has been announced, beginning immediately:

Health Card Clinic (blood and skin testing) second and fourth Monday from 9 a.m. to 12 noon; X-ray Clinic, second and fourth Wednesday from 9 a.m. to 12 noon; Maternity Clinic, second and fourth Thursday at 9 a.m.

The following Health Department clinics have been cancelled: December 21, Immunization clinic, Bolivia Baptist Church; December 22, Maternity clinic, Health Department, Shallotte; December 26, Pediatric Clinic, Health Department, Southport; December 28, X-ray Clinic, Health Department, Shallotte; January 2, Pediatric Clinic, Health Department, Shallotte.

Christmas Mail Has Problems

Acting Postmaster Marjorie P. Livingston rang the warning bell this week, reminding residents of the Southport area that this is the last round for Christmas mailing.

All out of town Christmas gifts and greetings should be deposited in the mails as soon as possible to be absolutely sure they will arrive at their destination on time. All gifts should be packed in sturdy boxes. Cardboard boxes should be wrapped in heavy paper and tied with strong cord. Each package should include a slip showing the person to receive the Christmas gift and listing the contents. In case outer wrapping of package comes loose the gift will still be delivered.

Nationwide, it is expected that more than eight billion pieces of mail will be delivered just before Christmas—a new record.

Propose Sale Of Feeder Pigs

On November 29, a meeting was held in Wallace for the purpose of developing the possibility of establishing a graded feeder pig sale.

Extension agents, vo-ag instructors, veterinarians, and interested people from the southeastern part of North Carolina were in attendance.

David Spruill, Extension Swine Specialist from N. C. State University, William Wilder, Marketing Specialist from the Department of Agriculture, and Dr. Robert Behlow, Extension Veterinarian, were present. Together, they led the discussion.

At present, there are three graded and two ungraded sales held each month in the state. At present, the nearest sale is located in Fayetteville.

A second meeting is planned for the month of January. At this time, the sale will be discussed at length. Grading demonstrations will be given to inform and show producers the procedures used in a graded sale.

Sales of this nature have proved successful. With trends toward leaner animals, swine producers who have participated in the established sales are quick to reply when asked if they have benefited from participating.

Brunswick county swine producers are being asked to study this proposal. "If you are interested in swine production with emphasis on feeder pig pro-" (Continued on Page 4)

Farmers Vote In Referendum As To Cotton

The 1967 cotton referendum on marketing quotas is being conducted by mail during the period December 5 through December 9, Ralph Price, ASC Office Manager, said this week. This is the first time that growers have voted on marketing quotas in this manner and it is hoped this more convenient method will encourage a larger vote. Generally, persons eligible to cast ballots are all those who engaged in the 1966 production of cotton.

Ballots were mailed Friday to all growers who are on record in the Shallotte office. Eligible voters who fail to get a ballot may obtain one from the office. The tabulation of the ballots will be under the supervision of the ASCS County Committee on December 14, at 9 a. m. in the ASCS County Office. The tabulation process will be open to the public.

The referendum on the Upland Cotton Research and Promotion Order will be held in conjunction with the Upland Cotton Marketing Quota Referendum. Any questions on eligibility to vote should be referred to the county ASC office.

The quotas will become effective and the broad upland cotton diversion program will be available next year if at least two-thirds of the growers voting approve the quotas. This upland program would provide price-support and diversion payments as well as loans.

If more than a third of the growers who vote disapprove quotas, price support at 50% of parity will be available to growers who keep their 1967 - crop upland cotton acreage within their farm allotments.

If quotas are approved the 1967 cotton program will be practically the same as the 1966 program. Principle changes are as follows:

- A. Minimum diversion for a cooperator, 12.5 percent of effective allotment.
- B. Price-support loan rate national average, 20.25 cents. Down from 21 cents in 1966.
- C. Price-support payment rate, 11.53 cents. Up from 9.42 cents in 1966.
- D. Diversion payment rate, 10.78 cents. Up from 10.5 cents in 1966.
- E. January 3, 1967, is the closing date for filing application for export acreage and for filing applications for sale or lease of allotments.

Brunswick Man Has New Job

William Delray Babson, pipefitter, has been promoted to the position of maintenance supervisor for Riegel Paper Company's \$42 million pulp mill now under construction in Port Hudson, Louisiana. He will transfer to the new complex December 1.

A native of Brunswick county, Babson graduated from Waccamaw High School and attended Wilmington College. He joined Riegel as a pipefitter helper in 1954 and was promoted to pipefitter in 1957.

The new supervisor, an active member of the Acme-Delco Presbyterian Church and a Mason, resides with his wife, the former Hilda Marks of Acme-Delco, and their two children in Acme.

Ash Jamboree Is A Success

ASH—A large, enthusiastic crowd enjoyed Waccamaw School's Country and Gospel Jamboree, held here, Saturday night.

Among the artists appearing on the program were "The Hired Hands", a group composed of J. W. White and Duward Babson, Waccamaw High graduates, Stan Knowles, a Bolivia graduate, and Southport graduate Albert Rogers, also James Robinson and Frankie Cox. This group appears regularly on Shallotte's radio station.

Others included the Richardson Family of Longwood, which includes Mr. and Mrs. Clarence Richardson and daughters, Vivian and Kathy Richardson, both current students at Waccamaw; and the Southern Gospel Singers, among whom is a former Waccamaw student, Tommy Simmons, and William and Etheridge Hewett and Roscoe Canady.

Elbert Sikes of Whiteville appeared as a special guest artist on the program.

Principal John G. Long said, "All of these talented persons gave of their time and talents for the benefit of the special classes at Waccamaw School. Many other individuals of the area also cooperated with ticket sales, advertising and donations. That everyone was inspired by the program was felt in the manner in which all groups joined together to sing the hymn, 'God Be With You' and a prayer by Clarence Richardson in closing the program."

Mrs. Myrle Evans and Mrs. Janice Gore, special class instructors have expressed their appreciation to all persons who helped make the program a very successful and gratifying one.--(JIGGS POWERS).

Glee Club To Give Program

A Junior High School Glee Club was organized at the beginning of this school year at the Southport High School. This group is composed of students from grades seven and eight and they seem to enjoy singing and rehearsing songs from their repertoire.

The Glee Club will present its first public program on December 15 at 7:30 p.m. in the Southport High School auditorium. (Continued on Page 4)



LEE

Time And Tide

Our issue for December 9, 1936, reported the call of a special session of the State Legislature, and the late Representative R. E. Stelle of Brunswick was getting ready to go to Raleigh. The State Forestry Department was seeking five locations in Brunswick for demonstration timber growing projects.

A member of the Cape Fear Pilot Association had returned from a trip to Florida aboard a palatial yacht, which he had guided through the intracoastal waterway; a group of northern sportsmen were backing a hunting preserve project near Winnabow; and "The Last of the Mohicans" was showing at the local moving picture emporium.

Wednesday, December 8, 1941, was our first edition after Pearl Harbor and this time we went outside Brunswick County for our big, black headline: U. S. Declares War on Japan." There was a sidebar story which was of great local interest: "No Report Received of Brunswick County Boys."

On the local front, the USO Hut was completed and ready for use; the survey had been completed for a new draw bridge over the intracoastal waterway from Southport to Fort Caswell; and W.S. Wells, chairman of the Brunswick County Defense Council, urged vigilance on the part of volunteer aircraft spotters.

Twenty years ago this week the war was over, and had been for a little over a year. An inland waterway count had revealed that" (Continued On Page Four)

Tide Table

Following is the tide table for Southport during the week. These hours are approximately correct and were furnished The State Port Pilot through the courtesy of the Cape Fear Pilot's Association.

HIGH	LOW
Thursday, December 8,	
4:27 A M	10:52 A M
4:39 P M	11:10 P M
Friday, December 9,	
5:21 A M	11:52 A M
5:39 P M	11:58 P M
Saturday, December 10,	
6:15 A M	12:46 A M
6:27 P M	
Sunday, December 11,	
7:09 A M	0:46 A M
7:21 P M	1:34 P M
Monday, December 12,	
7:57 A M	1:34 A M
8:09 P M	2:22 P M
Tuesday, December 13,	
8:45 A M	2:22 A M
8:51 P M	3:04 P M
Wednesday, December 14,	
9:27 A M	3:04 A M
9:39 P M	3:52 P M