



Sign Eye Bank Wills

Mr. and Mrs. M. M. Hood are shown here as they sign Eye Bank wills in cooperation with the Eye Bank Program sponsored by Lions International. Looking on is Dr. C. Willard Greene, chairman of the White Cane Committee of the Southport Lions Club, and in the background is Lion President C. D. Pickerrell. (Photo by Spencer)

May Get More Library Funds From The State

An official proposal that the State of North Carolina immediately increase appropriations for public libraries by \$1 million a year will get the attention of North Carolinians for Better Libraries (NCBL) at their third annual meeting in Raleigh October 4.

Mrs. A. P. Henry, Jr., is voting member from Brunswick county.

State Sen. Hector MacLean of Lumberton, NCBL president, said a day long program devoted to the recently released report of the Legislative Commission to Study Library Support in North Carolina is being planned.

"North Carolinians for Better Libraries stands solidly behind the commission's recommendations," said MacLean, who was also a member of the commission from the North Carolina Senate.

Some 350 members and guests of the statewide NCBL organization are expected to attend the meeting, to be held in the Hotel Sheraton-Sir Walter.

MacLean said all candidates for General Assembly seats in the November general election are being invited so that they can hear first hand the views of interested library supporters from throughout the State.

NCBL has a voting member in each of the 100 counties and a still growing list of supporting members dedicated to make an adequately stocked, properly staffed public library facility that meets State and national standards accessible to every citizen of North Carolina.

The study commission report, released last month, recommended that the State of North Carolina gradually assume

(Continued On Page Six)

(Continued On Page Six)



Repeat Performance

When the Southport Public Library opened a good many years ago in the Garrison Building the first person to check out a book was Miss Gertrude Loughlin. She is shown, left, as she becomes the first person to check out a book from the new Southport-Brunswick County Library after it had moved into its new building. Miss Dorothy Dickey, librarian, does the honors. (Photo by Spencer)

Student Trouble Flares At Leland

A relatively minor altercation with racial overtones between two Leland High School students Tuesday erupted into a not so minor fight in the school's auditorium, prompting officials to dismiss all students for the day and suspend school at least until Thursday. Tension continued through the afternoon and night as armed white men patrolled the roads in the area.

According to Leland principal N. C. Phipps, the incident began in front of the school when two students got into a fist fight. Soon other students were engaged in fistfights and scuffling and Phipps decided to call law enforcement officers.

After they arrived the students were gathered in the auditorium where, it was hoped, calm might be restored. Instead another fight broke out as soon as the students entered the auditorium. This one involved "about 20" of the school's 829 students. Highway patrolmen were brought in to restore order. To prevent further trouble, Phipps dismissed school about lunchtime and told all the students to leave the school grounds.

Ralph King, assistant superintendent of Brunswick County schools, said there were no outside people nor adults involved in the fighting, and that there were no serious injuries to any of the students.

Tuesday to prevent any further disturbance. Early Wednesday morning the situation was not so tense and the patrolmen were withdrawn from the area.

Tuesday night armed white men were reportedly driving on the roads in the Leland-Navassa area. Shots were reported, but there were no injuries reported. Brunswick county schools

(Continued On Page Six)

(Continued On Page Six)

(Continued On Page Six)

Lime Program Being Pushed For Brunswick

By Archie F. Martin

Governor Moore announced the beginning of a State-Wide "Lime Campaign," to begin on September 12, at a press conference in Raleigh.

Brunswick county stands to gain by an increase of \$250,000 in farm income if farmers and agri-business cooperate in a successful drive to adequately lime the fields in the county. In Georgia a similar campaign resulted in an increase of 45% in lime-use for one year. Lime is money to the commercial farmer. With the crops that are being grown in Brunswick a dollar spent on lime will bring back an average of \$4.50 where it is needed.

A summary of soil sample reports sent in 1967 showed that over 80% of the fields in Brunswick county need lime. What a wonderful opportunity to increase farm income.

A Lime Committee has been named for Brunswick. It includes the Farm Supply Dealers, Fertilizer Companies, Vocational Agricultural Teachers, ASCS, SCS, FHA, BEMC, Extension Service, Financial Institutions, the Press and Farmers.

This group hopes to make every effort to encourage farmers and home owners to have their soil tested and apply the needed amount of lime.

Why is lime important? What does it do when it is properly applied? What are some of the side effects? We expect lime to:

1. Furnish calcium and magnesium for the plants.
2. Make the soil less acid and provide a more favorable condition for plant growth.
3. Enables the soil to hold more potash and phosphate which slows down leaching of elements.

(Continued On Page Six)

Kindergarten At Nearby Church

The Rev. Johnnie S. Huggins announces the opening of a Day Kindergarten at Ocean View United Methodist Church at Yaupon Beach. Registration will be held at the church on Monday at 9 a.m. Classes will begin on Monday, October 7. Children 4 and 5 years of age will be accepted. It will be limited to 20 students, with 5-year-olds given preference.

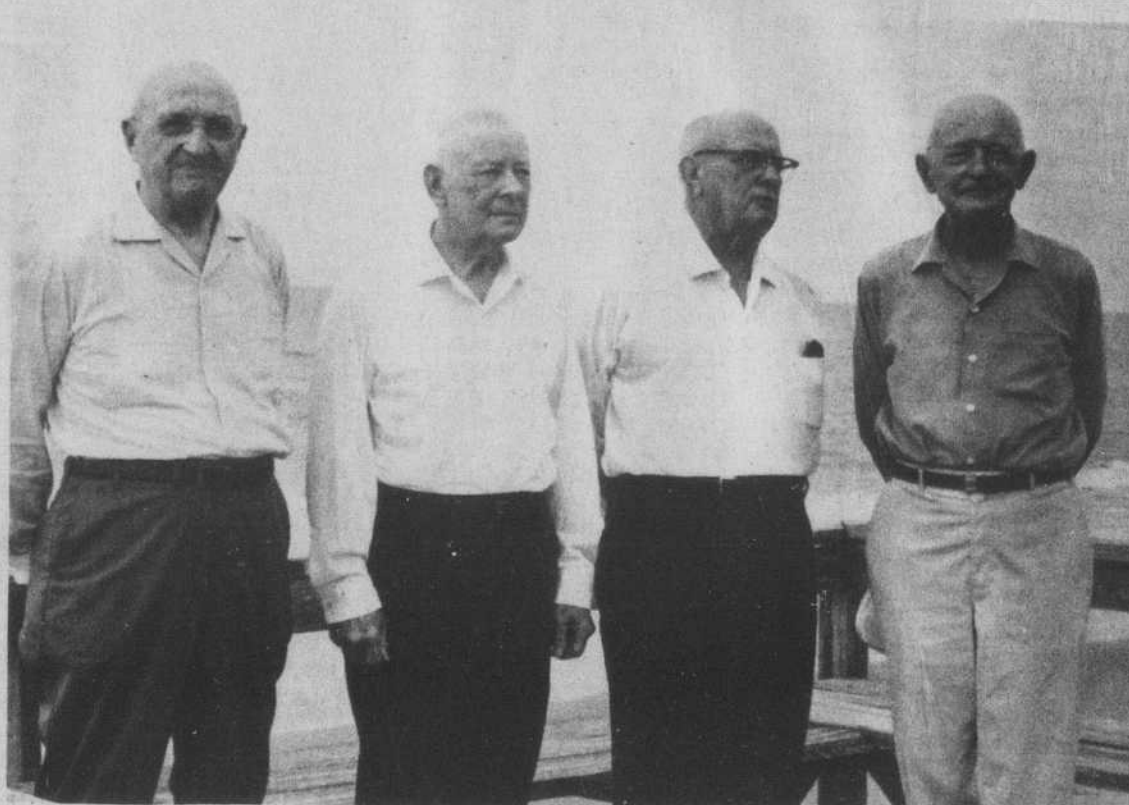
The kindergarten will operate from 9 a.m. to 12 noon Monday through Friday. A state-recommended curriculum will be used. The cost of the school will be \$5 per week per student. There will also be a single \$10 registration fee per student, which will cover supplies for the entire school year.

Teacher of the kindergarten will be Mrs. Linda Nock of Yaupon Beach. Mrs. Nock, wife of Ensign William Nock, U.S. Coast Guard, is a graduate of Goldey Beacon College, Wilmington, Delaware. Mrs. Nock will have an assistant for each day. There will be non-denominational religious education taught by the Rev. Mr. Huggins.

(Continued On Page Six)

(Continued On Page Six)

(Continued On Page Six)



Reunion At Long Beach

John P. Stedman, Lumberton banker, was host during the past weekend to three friends and former schoolmates who have made their mark in the world of business achievement. Left to right they are Basil Horsefield, of Florence, Ala., vice-president and director of Reynolds Metal Co.; John G. Mitchell, of Warrenton, president of Citizens Bank of Warrenton; Mr. Stedman, of Lumberton, president of the Scottish Bank; and Elliott T. Cooper, of Baltimore, Md., vice-president of Union Trust Co. These four once played on the same high school football team at Oxford. (Photo by Spencer)

Board Given Extension On School Plan

The Brunswick County Board of Education met in regular session last Tuesday and approved the following teachers contracts for the 1968-69 school year: Bolivia—Ida Creech Mintz; Leland—Phil William Burton, Donnie R. Fann, Gail Hines, Charles A. Jones, Melissa Beale Padgett, Stanley Winborne, III; Shallotte—Ann B. Anderson; Southport—Betty Darnell Cheers; Union—Betty L. Atkinson, Evangeline M. Ellison, Harold Ellison, Bernestha Fennell, Bobby D. Pettis, Joyce Pettis, Jaswant S. Sihra; Waccamaw—Hobson C. Bennett, Jr., Rosanna B. Ezzell.

The board accepted the following teacher resignations: Leland—Mary S. Austin and Mary C. Kendall.

The following E.S.E.A. Teacher Aides for the 1968-69 school year were appointed:

- Bolivia—Gladys Hickman, Mary Trope, Elizabeth R. Mercer, Allen B. Ward, Esther Mae Willetts, Eva Mae Willetts, Wanda Williamson.
- B.C.H.S.—Jacqueline Bellamy, Olive Daniels, Inna Hewett, Mary Jackson, Rosa Johnson, Sandra McCracken.

- Lincoln—Emily Ballard, Flossie Ballard, Edna Beatty, Annie Brown, Addie Bryant, Ella Ray Burney, Levada Burney, Ann Jones, Mary Robbins;
- Shallotte—Edna Bennett, Catherine Benton, Eva Mae Bryant, Emma L. Caison, Patricia Clemmons, Glenda Danford, Virginia Gause, Geneva Hardee, Norris B. Harrell, Kathleen Holden, Elizabeth Hughes, Virginia Reynolds, Frances Hewett, Gladys Russ, Inez Tripp, Ruby Usher.
- Union—Gladys Virginia

(Continued On Page Six)

Aubrey Johnson Leaves Shallotte



CARL RAY

Two promotions and a transfer to a new post, all involving personnel of the Shallotte offices of the Waccamaw Bank and Trust Company, were announced Wednesday by Lawrence R. Bowers, president and chief executive officer of the Waccamaw system.

Rhone Sasser, who joined the Shallotte branch last November as cashier, has been named vice president in charge of the operations, and Carl E. Ray has been named manager of the consumer loan department. Ray has been at the Shallotte branch since last December.

Sasser takes over the post held by Vice President Aubrey C. Johnston, who is being transferred as manager of the Waccamaw's branch office in Wilmington, which will open sometime next month.

In making the announcement of these changes, Bowers expressed confidence in the capabilities and leadership of Sasser and Ray to continue to give the Shallotte offices effective and efficient management. He said Sasser, as

(Continued On Page Six)

Dellert Has New Pastorate

Rev. James R. Dellert, pastor of the Shallotte Presbyterian Church for the past two years, asked Sunday that the official church body call a congregational meeting for the purpose of concurring with his request to the Wilmington Presbytery to dissolve the pastoral relationship existing between himself and the church as of September 29.

Rev. Dellert has accepted a call to the Brownson Memorial Presbyterian Church of Southern Pines, in the Fayetteville Presbytery.

Rev. Dellert served the Shallotte Church in the summer of 1965. He returned to Union Theological Seminary in Richmond in the fall. In the Spring of 1966 the Shallotte Church extended a call to him to become their first full-time pastor upon his graduation from the seminary. He accepted the call and was ordained and installed as pastor of the church in May 1966.

Rev. and Mrs. Dellert and their children will leave Shallotte the end of September and will begin their new work in Southern Pines October.

Jury List For September Term

The following list of jurors has been drawn for the term of Brunswick County Superior Court scheduled to convene here September 16:

- BOLIVIA—Aleather Bell, Norwood F. Bass, Sr., W. C. Hewett, Mildred Mercer, Katherine Willets, R. A. Beck, Mrs. Marie Smith, D. N. Bowling, Edward Craft, Eddie R.

(Continued On Page Six)

Envelope For ASC Voting To Be Signed

Farmers were reminded this week of a very important part of the election process for Agricultural Stabilization and Conservation (ASC) community committeemen, especially where ballots are mailed in to the ASCS county office. In Brunswick county the deadline for returning ballots in the community elections is September 16.

On September 6, a ballot and two envelopes were sent to all eligible voters on record in the county office. One envelope is plain, and the other has a statement printed on the back which the farmer needs to sign. A witnessed mark will also qualify as a signature.

The ballot should be marked and sealed inside the plain envelope; voters are cautioned not to enclose any other material. Also, voters should not write on the plain envelope. This assures the secrecy of the vote. The plain envelope should then be put inside the envelope with the statement on the back. This statement is a certification that the ballot was marked by the farmer personally without undue influence by any person. The envelope should then be mailed or otherwise delivered to the ASCS county office.

"Be sure to sign this statement on the back of the outside envelope," caution ASC officials. Or if it is not signed, the ballot will not be considered as a vote.

Any eligible voter who did not receive a ballot should contact the county office immediately and request one.

Mauney Gets New CP&L Job

Sam D. Mauney, Jr., has been promoted to distribution design engineer for Carolina Power and Light Company in Raleigh. He is responsible for the design, selection and standardization of the equipment used in CP&L's overhead and underground distribution system.

He joined CP&L in 1949 as a

(Continued On Page Six)



SAM D. MAUNEY, JR.

Tide Table

Following is the tide table for Southport during the week. These hours are approximately correct and were furnished The State Port Pilot through the courtesy of the Cape Fear Pilot's Association.

HIGH TIDE	LOW TIDE
Thursday, September 12,	
12:21 AM	6:10 AM
12:33 PM	6:46 PM
Friday, September 13,	
:09 AM	6:52 AM
1:00 PM	7:40 PM
Saturday, September 14,	
1:21 AM	7:46 AM
1:57 PM	8:34 PM
Sunday, September 15,	
2:15 AM	8:40 AM
2:57 PM	9:40 PM
Monday, September 16,	
3:15 AM	9:40 AM
3:57 PM	10:40 PM
Tuesday, September 17,	
4:21 AM	10:40 AM
4:51 PM	11:34 PM
Wednesday, September 18,	
5:15 AM	11:40 AM
5:45 PM	12:22 PM

Brief Bits Of NEWS

COLLEGE FRESHMAN
Miss Sallie Tomlinson, daughter of Mr. and Mrs. E. B. Tomlinson, Jr., of Southport, is a freshman at Wilmington College.

LAND BANK SCHEDULE
A representative of the Federal Land Bank of Clinton will be in the county on the second and fourth Thursday of each month beginning September 12. He may be seen at the Agricultural Extension Service Building in Supply.

ACCEPT INVITATION
Twenty visiting laymen have accepted invitations to participate in the Christian Witness Mission which will be conducted at Trinity Methodist Church during the weekend of September 27. These people come here from three states.