



Oyster Season In Brunswick

This is the time of year when oystering is big business in Brunswick County. The above photo shows the tide is low and oysters are exposed. These people are busy picking them up before the tide comes in

again. In the background are other persons engaged in the same occupation on another oyster rock. Brunswick now is the leading oyster producing county in North Carolina.

Sunny Point Affected By Army Change

Eight civilian jobs at Sunny Point Military Ocean Terminal will be eliminated by June 30 as a result of a massive Defense Department cutback announced Monday.

The cutback of jobs at Sunny Point, which represents a savings of \$26,000, is part of the plan to shut down or cut back 307 military bases and save the country \$609 million. North Carolina will lose more than 1,700 military and civilian jobs.

Just how the cutback will affect the overall employment at Sunny Point is not known at this time. There is some indication the reduction of these jobs will coincide with a reduction in other civilian jobs at the terminal, one of the largest shipping points of war materials overseas and a major part of the economy of Brunswick County, especially of Southport.

When all of the shutdowns, reductions and consolidations are completed, the Pentagon said, there will be 37,800 fewer military positions and 27,000 fewer civilian jobs.

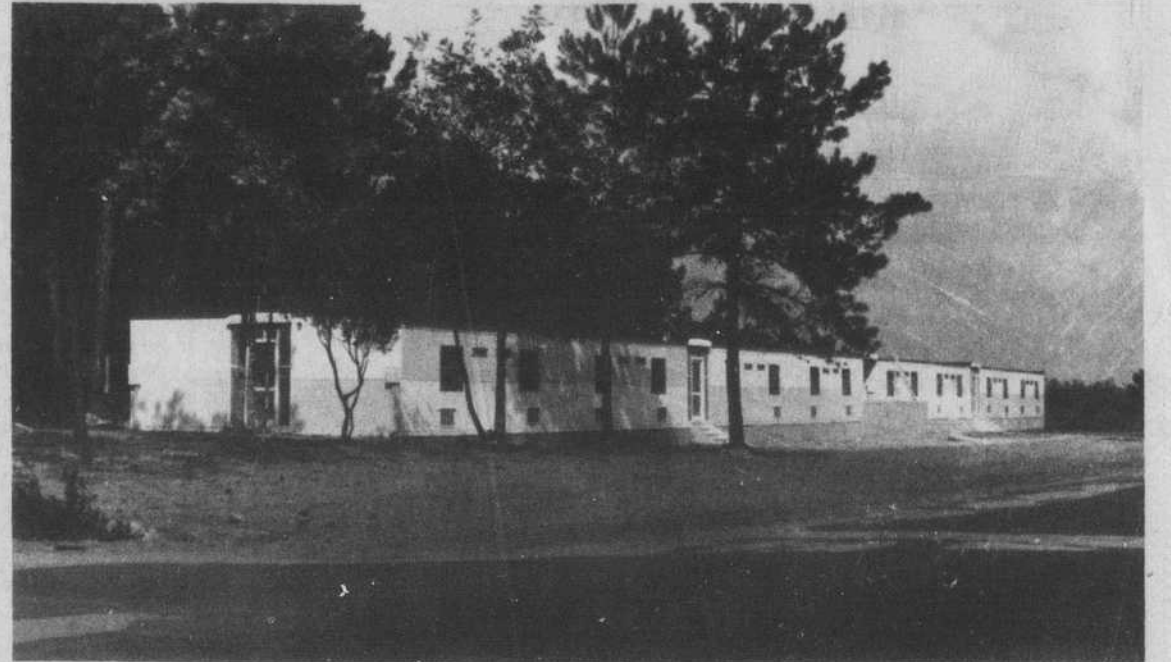
Base closings have been a feature of Democratic and Republican administration economy drives for nearly 10 years.

The latest batch of actions taken by Secretary of Defense Melvin R. Laird follows a series of economy cuts in the size of the Army, the strength of the Navy and of the Air Force, and slashes in a number of weapons and hardware projects.

The Pentagon is under orders from President Nixon to find \$3 billion in savings this fiscal year.

Until Monday's base-reduction move, Laird had been able to uncover only about \$1.7 billion of this while reducing the ranks of the armed forces by about 220,000 men.

It is uncertain how much of the \$609 million annual saving from the base closings and reductions will be realized this fiscal year which ends next June 30.



Pre-Fab Motel Units

This is the new motel complex at Tranquil Harbour Marina at Long Beach. It was erected in record time, because it was assembled from pre-fab units constructed by one of the leading motel chains in the country. Owner Fred Williams was anxious to get it ready in time for fall fishermen and for Intracoastal Waterway traffic which passes his marina this time of year. (Photo by Spencer)



Wreck Near Southport

Edwin Creech was not injured early Sunday morning when the car he was driving failed to make the turn at the junction of Highway 211-37 and mowed down a telephone pole. The front of the car was not damaged from this impact, but a signpost smashed the windshield. Creech was charged with reckless operation of a motor vehicle. (Photo by Spencer)

Research Shows Good Fishing Off Brunswick

From August to mid October the DAN MOORE, Research Vessel For North Carolina C&D, searched for commercial concentrations of black sea bass, porgy, snapper, and other bottom fish in Raleigh Bay, Onslow Bay, and Long Bay to the South Carolina line.

The purpose of the cruises was threefold. Besides searching for fish, special roller gear to keep the net up off rough bottoms was tested and the bottoms were charted. Available charts were not specific enough to tell the roughness of the bottom of a particular area, especially in waters 30 fathoms and deeper.

Gear damage was minor. Very few areas were too rough to trawl. Ridges and areas of coral are considered rough bottoms.

A No. 41 Yankee trawl was used in depths of 10, 15, 20, 30, 40, and 60 fathoms. At each designated fathom station a one hour tow was made, keeping as near as possible the same contour line. Sampling in a grid system, the various fathom stations were sampled at 10 mile intervals. Electronic equipment (sonar and fathometer) was used between stations and if concentrations of fish were found, the trawl was put overboard and the area was investigated.

Sampling of Raleigh Bay, Onslow Bay, and Long Bay to the S.C. line was completed. A picture of August-October abundance can now be drawn, but surveys during all four seasons are necessary for the complete picture.

The most promising results so far have been in Long Bay, where catches worthy of commercial exploitations have been made.

Small areas of good catches were made in all Bays, however the concentrations were spotty. Species not normally handled by N.C. dealers, such as grouper and snapper, were caught along with species commonly handled, such as black sea bass and porgy. The best catch for an hour pull was 1250 pounds of grouper. Groupers averaged 19 pounds apiece, ranged from 5-30 pounds.

Market prices of the fish caught are usually good, consequently it would not take a boat load for fishermen to show a profit.

A detailed report including locations of good catches and trawable bottoms is being prepared. "Anyone interested should write the Morehead City office and request a copy.

Voice Opposition To Zoning Proposal

Southport citizens met Thursday night at the Brunswick county courthouse to study a proposed Comprehensive New Zoning Plan for this town and the surrounding area and numerous objections were recorded for future consideration by members of the board of aldermen.

For the most part, these objections were voiced by property owners, but there was general agreement that to designate Howe Street as a predominantly residential section would be contrary to present trends in business growth and would impose unnatural restrictions upon business expansion.

One of the specific objections came from Ray Stubbs, who requested that 150-ft frontage which he owns on the old Southport Yacht Basin be zoned for commercial or business use instead of residential. Having made this request, he stalked out of the meeting and he hadn't reached the door before Frank Hutton got up to protest this change. He wants the area kept as it is. This sentiment was supported by Mrs. Barbara Smith. Both she and Hutton reside in the area affected.

Later in the meeting Hutton rose to inquire if zoning for residential use would have any adverse affect upon existing businesses. He was told it would not. "That's fine," he said, "I'd like for Pappy to keep on with his machine shop."

E.J. Prevatte, county attorney,

Adult Classes Being Formed

Adult evening classes in typewriting, welding and home landscaping will begin Thursday at the Brunswick County-Southport High School for those out-of-school adults who desire to develop saleable skills in these occupational areas.

A representative from Cape Fear Technical Institute of Wilmington will be at the school Thursday night at 7:30 o'clock to meet persons interested in enrolling in one or two of these classes. All persons interested in enrolling in either of these classes should be present to help set up dates and time schedule for the courses.

Those who wish to enroll, but cannot be present at the Thursday night meeting, should contact the principal or J. A. Francis for class reservations.

raised an objection to having the area near the courthouse restricted for residential use. "Our county government is growing," he said and it must have space nearby the present buildings for reasonable expansion." He asked that Davis

Continued on Page 6



JUDGE MINTZ

Judge Mintz New President

Judge Rudolph I. Mintz, of Wilmington, Resident Judge of the Fifth Judicial District, was elevated from president-elect to president of the Conference of Superior Court Judges of North Carolina at a meeting held Friday and Saturday in Chapel Hill.

Judge Mintz is a native of Brunswick county, the son of Mrs. Minta Mintz and the late H. L. Mintz of Shallotte. He practiced law in Southport and lived here for many years prior to moving to Wilmington.

Mintz succeeds Judge W. K. McLean of Asheville, and will serve for one year as president.

Conferences of Superior Court Judges meet in June and October of each year, but in more recent years the Conference has met in Special Sessions several times each year in the conduct of Seminars, programmed particularly; to disseminate among the Judge the effect of new decision of the Higher courts.

Other officers elected were Judge Henry A. McKinnon Jr., Lumberton, President-elect; Judge W. Albert Cowper, Kingston, vice president; and Judge Eugene G. Shaw, re-elected secretary-treasurer.

Baptists Sell Bonds To Help With Building

A drive to sell \$100,000 first mortgage 6-7% church bonds for renovation and adding on to the educational building of the Southport Baptist Church was launched recently with the selection of a steering committee.

This committee is composed of Lester Lowe, general chairman; E. J. Prevatte, vice-general chairman; Mrs. Barbara Faulk, publicity director; Susie Carson, chairman of committees; Mary L. Russ, Walter Aldridge, Kirby Sullivan, team managers; and R. N. Clevenger, Sr., E. B. Tomlinson, outside prospects chairman.

This committee will direct the reservation and sale of the bonds which will be available in denominations of \$1,000, \$500, \$250, and \$100. They will mature from 1 to 10 years and will be available for reservation on November 10. Interest will be payable semi-annually.

A thorough explanation of church bonds, their value, security, and availability will be presented to members and friends of Southport Baptist Church Sunday morning, November 9, at 11 o'clock. All interested persons are invited to be present. These first mortgage bonds are not only purchased by individual investors, but banks, insurance companies, pension funds, trust accounts, endowments and similar investment institutions.

Time And Tide

It was October 25, 1939, and Henry Stone, principal at Shallotte High School, had recently completed work for his Master's Degree at Duke University. Formerly he had been principal at Supply. An English sparrow, making a rest stop on Frypan Lightship, had been captured some two weeks before and subsequently released ashore in Southport. Due to the unsettled condition of the international situation, plans for a Navy Day celebration in Southport had been abandoned; the old, four-story hotel structure on Bald Head Island had been destroyed by fire; and the homes of H.S. Smith and Capt. Fred Willing were being repaired and painted.

According to a headline, the Venus Flytrap was the strangest form of plant life known to man. Whether this plant deserved this highest honor is not known, but there was an interesting feature on those botanical carnivores that week. The lady hypnotist-swindlers reported the week before had moved on to Columbus County; Harry Sells had been chased by a wild boar and black bear, alternately, through most of the woods (a lot) north and east of town; and Robert Willis had gone to work with a Chadbourne drug concern.

It was October 25, 1944, and over two hundred persons had attended the 50th anniversary homecoming at New Hope Presbyterian Church; Harold Aldridge was serving with an artillery outfit in England; the Southport school was planning a Hallowe'en Carnival; the hurricane of the preceding week had failed to reach the Brunswick area; Dr. and Mrs. E.G. Goodman had announced the birth of a son; and a Home Demonstration Club was to be set up in the Funston section.

County Democratic leaders were closing out their campaign with a

(Continued On Page Four)

Supervisors May Organize

Ira Butler, tax supervisor for Brunswick County, is spearheading the formation of an eight-county area into the Cape Fear Valley Tax Supervisors and Assessors Association.

The group met Thursday at the Neptune Restaurant at Wrightsville Beach. Discussions at the meeting centered on mutual tax problems of the eight counties, such as the mobile home situation and the proposed one percent local sales and use tax.

Tax supervisors and assessors attending the meeting were Howard Holley of Pender; V.D. Baker of Robeson; J.H. Goforth of Cumberland; Paul Campbell of Bladen; J.H. Justice of Onslow; Brooks Stanley of Columbus; Laurence O. Bowden of New Hanover; Raymond Blake of New Hanover; John A. Martin of Cumberland; R. Durham Prevatte and G.W. West of Robeson; and Butler.

Annual REA Meet Scheduled Friday



MRS. WHITE

Supervisor Is New Officer

Mrs. Ruth T. White, general elementary supervisor for Brunswick County Schools, was elected secretary-treasurer for the Southeastern Division of Supervisors of the North Carolina Education Association last week. The Southeastern Division includes the following ten counties: Bladen, Brunswick, Columbus, Cumberland, Hoke, New Hanover, Pender, Robeson, Sampson, and Scotland.

The election was held at a luncheon in Fayetteville on Friday. Jerry Beaver of New Hanover was elected president and Mrs. Henrietta R. Fox, Lumberton City Schools, was elected vice-president.

Dr. Jerome H. Melton, Assistant Superintendent, State Department of Public Instruction, was the speaker at the luncheon. He spoke on "Education: An Open Door to Understanding for Directors of Instruction and Supervisors."

Officials of the Brunswick Electric Membership Corp., are busily making plans for the 30th annual meeting of that organization, which will be held on next Friday, October 31, at the Columbus County Warehouse, Highway 74-76, in Whiteville.

Registration will be started at 11 a.m., it is announced, with the meeting to get underway in early afternoon.

Henry Schriver will be the featured speaker at the meeting, and Hugh Vance, the cooperative says: "Don't miss Henry."

He is said to be one of America's foremost farmer-philosophers, and seasons his talks with plenty of food for thought, along with a generous dash of wit and rhyme. Schriver is a dairy farmer in Grafton, Ohio, but, said Vance, "His gift of gab has carried him into some of the largest convention halls in America."

He has a solid background of many accomplishments, ranging from his local church to the Ohio General Assembly, and he thus has been able to put together first hand information over a broad area and apply it with a well-trained and mature mind.

Labeled the "Grandma Moses" of poetry, he brings humor, inspiration and common sense to his listeners. Also on the afternoon's program are the Musical Four, a family teenage group of Gospel Singers from Godwin. This group has traveled from Florida to Canada, and from the Atlantic to the Pacific, and have won wide acclaim for their singing. The big meet will open at 11

(Continued On Page Four)

Achievement Of 4-H Highlighted

Brunswick County 4-H club members will have their night Thursday.

Those young people who have put forth an extra effort will be rewarded as the annual 4-H Achievement program is held. The awards program will begin at 7 p.m. at the Extension Service Building in Supply. During the program outstanding accomplishments will be recognized and county champion awards will be given in the various project areas.

The public is invited to come and see these young people

(Continued On Page Four)

Tide Table

Following is the tide table for Southport during the week. These hours are approximately correct and were furnished The State-Port Pilot through the courtesy of the Cape Fear Pilot's Association.

Thursday, October 30	
11:03 AM	4:46 AM
11:21 PM	5:34 PM
Friday, October 31	
11:45 AM	5:34 AM
	6:22 PM
Saturday, November 1	
0:09 AM	6:22 AM
12:39 PM	7:16 PM
Sunday, November 2	
1:03 AM	7:22 AM
1:27 PM	8:10 PM
Monday, November 3	
2:03 AM	8:22 AM
3:15 PM	9:04 PM
Tuesday, November 4	
3:03 AM	9:22 AM
3:15 PM	9:58 PM
Wednesday, November 5	
3:57 AM	10:22 AM
4:09 PM	10:46 PM