

## Letter Urges Improvement On Highway 74-76

V.W. Herlevich of Wilmington, a property owner in Brunswick county, has written to Chairman Lauch Faircloth of the State Highway Commission urging that Highway 74-76 be given high priority for early four-laning.

Following is the text of Herlevich's letter:

"The August 20, issue of the Watauga Democrat carried a report of your speech to the Rotary Club in Boone, North Carolina. I was very much interested in your comments about better highways going to those who demanded most, and more particularly that the four-laning of Highway 74 from Wilmington to Charlotte was under contract.

"We in this section are indeed grateful that some of this work is underway. However, we are most concerned about the 6 miles from the Brunswick River to Leland in Brunswick County. To my knowledge—that is, according to newspaper reports—priority has supposedly been given this section since 1957, when a centerline survey was run for a proposed new highway. It would certainly seem that in thirteen years the people in this section could expect something definite in the way of department plans.

Perhaps the biggest reason we do not have this road completed now is that our people have not demanded enough. This section of the highway is most important to Brunswick County, and it is most unfortunate that Brunswick County officials have not made greater efforts to get this work done. Shopping centers, truck terminals and other commercial interests are waiting for this road location now. The completion of this road, with proper access and service roads, would probably mean that the Woodburn-Leland area would become a town of 5,000 to 10,000 people in the not-too-distant future. Brunswick County can ill afford the loss of increased taxes which they would derive from increased growth in the community. As it stands now, this area is becoming a conglomeration of mobile home parks, and, until the new highway is constructed, I don't see that we can expect anything different.

"My reason for writing this letter is not only that I travel this road practically every day, but also that 75 per cent to 90 per cent of my work is done in Brunswick County, and I am vitally interested in its growth."

## Phone Service Is Improved

Additional trunking facilities are being placed between Southport and Wilmington by Southern Bell according to R.E. Nantz, manager.

"The equipment desperately needed were coin boxes facilities which we had hoped to have during the summer season," said Nantz, "however shipment delays due to manufacturers shortages prevented the installation of coin boxes trunks during the busy season. This equipment will be installed in September and should alleviate the problems encountered because of lack of pay telephone facilities this summer.

And as the hunting season opens, Nantz also points out that stray shotgun pellets frequently cause damage to

(Continued On Page Eight)



## Demolishing Continues

Work is progressing on the demolition of the burned-out Southport High School building to make room for mobile units which will be moved in later

this fall. At this point only the lunchroom with the library overhead and the two classrooms in the west wing remain standing. (Photo by Spencer)

## Principal Asks Patience From School Patrons

Marion L. Burn, Jr., principal of Southport Elementary School, has written a personal letter to parents of each child in his school, reporting progress that has been made in certain areas, telling of the prospects for future improvement and asking for cooperation in working toward a solution of school problems.

Following is the text of his letter:

"The new school term has begun and the initial confusion of school opening has subsided. Now, we plan to get down to the business of education. "There have been several significant improvements and changes in the Elementary School that I feel you should be aware of. First and foremost, mobile units have been ordered and it is anticipated that the entire Elementary School will move to the Southport location by Thanksgiving. During that brief transition there will inevitably be some confusion. We shall attempt to minimize this confusion to the best of our ability. Secondly, this year we are receiving more school supplies than ever before. These supplies have been distributed and are being used in the classrooms. Third, additional bathrooms have been constructed, are in use, and have been renovated and the mobile units moved. Next, menus for the lunchroom will be published weekly. Both Chocolate and whole milk will be available on a selective basis. The bus schedule, loading and unloading, as well as discipline are being closely monitored by the Principal and designated teachers.

"This open letter is not trying to paint a 'the Sun is in this Heaven and all is right with the World' picture as we do have problems. There are areas that need improvement but the

(Continued On Page Eight)

## Soil Men Plan Tour Of County

The Brunswick Soil and Water Conservation District is sponsoring a farm tour Friday afternoon which will include visits to five farming operations in Brunswick county.

At 1:00 p.m. the group will assemble at the parking lot of the burned out Red & White store at Shallotte.

From 1:15 to 2 o'clock they will visit the Leroy Mintz, Jr. farm to see water disposal systems, tile drains, waterways and use of plastic drain tile.

From 2 to 3 o'clock they will be at the Edwin Clemmons farm to observe plantation management, planting, thinning, fire control, hardwood control and thinning natural stands.

From 3 to 4 o'clock they will visit the T.J. Gilbert farm to see no-til equipment, corn in rye and corn in residue.

From 4 to 4:30 o'clock they will be on the Harlee Hewett farm to view corn in residue, corn in disking, soybeans in small grain stubble.

From 4:30 to 5:15 o'clock the tour members will be on the Harold Robinson—Aunt Wren's Antiques farm to see no-til soybeans.

At 6 o'clock they will assemble at Varnamtown for a fish fry.

The Brunswick Soil and Water Conservation District is a subdivision of state government responsible for the overall soil and water conservation activities within the district.

The district is governed by a board of 5 members, 3 elected and 2 appointed. Present members are James D. Bellamy, Jr., Bryan Smith, Worth Mercer, Abner Knowles, and W.A. Clemmons.

As the land operator's needs and interests change, the district's responsibilities become more and more complex and necessary.

The district has received many requests from landowners on the beach areas for suggestions and assistance in maintaining vegetation in their yards and on the dunes.

The towns are becoming more aware of the services offered by the district. Several towns have requested assistance through the district. Yaupon Beach has developed a resource plan with the assistance of the Soil Conservation Service personnel assigned to the district.

Through the Soil Conservation Service, the County Board of Education has been assisted in developing land suitability and drainage plans for the proposed consolidated school sites.

Donna Lancaster resigned as district secretary and Cammie Robinson was employed to replace her.

Area 6 had a supervisor and

## McKeithan Is Reappointed As Tax Collector

Homer McKeithan was reappointed tax collector for Brunswick county at the regular meeting here Tuesday, held one day late because of the Labor Day holiday on Monday.

Jerry Moore, candidate for the board of commissioners in the General Election, resigned from the Resources Development Commission for Brunswick county and Alfonza Roach was appointed to fill his unexpired term as representative from Lockwoods Folly Township.

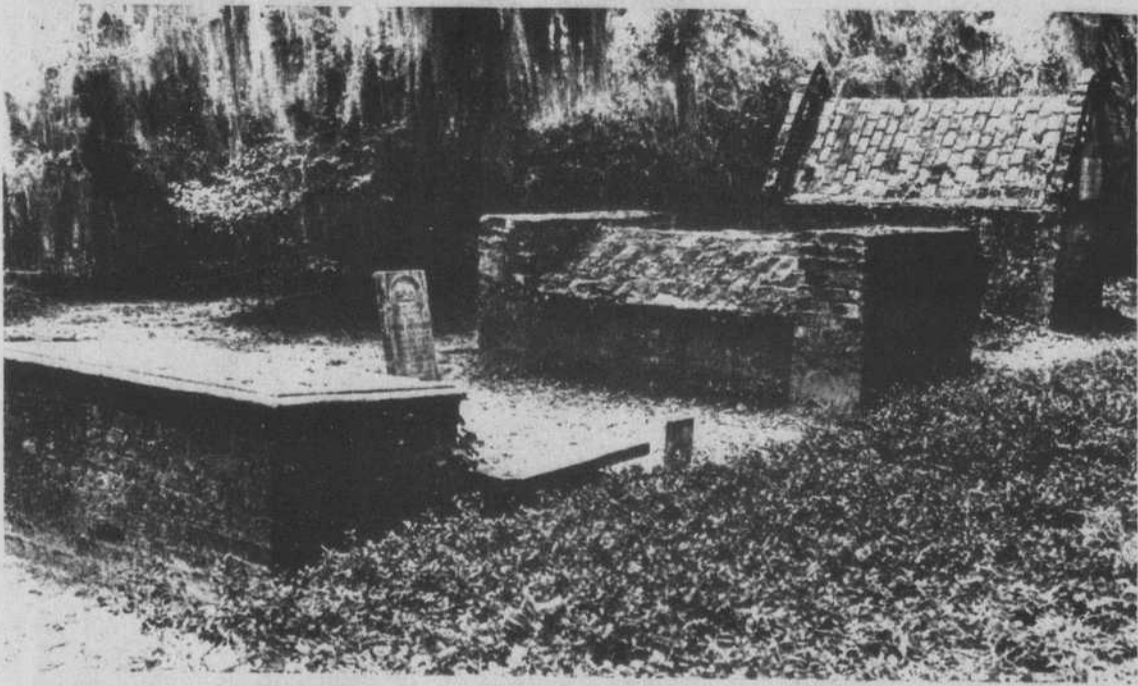
John L. Barbee of Southport resigned as Brunswick county representative on Southeastern Economic Development Commission.

Encouragement was seen for future improvement of Lockwoods Folly River in a letter from U.S. Army Engineers. The communication came from Major Joel T. Callihan who said "The establishment of several fish houses on the river near Varnumtown and use of the river by shrimp boat operators supports the need for restoring adequate depths in the lower part of the river. Consequently a report recommending reclassification of the project to the 'active' category has been prepared and submitted to higher authority for review."

Three resolutions requesting law enforcement project funding projects from the NC Committee on Law and Order were approved and addressed to Jerry Ramsey, project director of COG for forwarding.

The first request was for \$600 which would be matched with

(Continued On Page Eight)



CENTURIES-OLD CEMETERY—"King" Roger Moore, who died in 1750, his tomb is on the right. It is one of the impressive features at Orton Plantation Gardens near Wilmington, N.C.

## Orton Province Of King Roger

By FRANK O'BRIEN  
They were opposites all the way, even to their final resting places.

One was George III, English king, whose royal remains are entombed in London's Westminster Abbey.

The other was Roger Moore, king in nickname only, but a super-patriot of early Colonial days whose burial site is an obtrusive family cemetery on the grounds at Orton Plantation Gardens.

The king and the "king" were foes from the start when "King" Roger Moore came to the lower coast of North Carolina around 1730 and dominated the region in many ways, including leadership in resistance to the British Crown.

Roger Moore and his kinsmen proved such antagonists that George III, cognizant of their strong disagreements with his representatives in the Cape Fear region of Carolina, referred to them as "those pestiferous Moores."

"King" Roger Moore gained his nickname for his masterful personality, generosity, and occasional high-handed methods in politics and business.

He built Orton Plantation, beginning with a one-story, thick-walled brick home. The grounds included, some several hundred yards north of the house, a family cemetery, which was required by law of all plantations during Colonial days.

Just as "King" Roger Moore dominated the early Colonial days on the lower Cape Fear, his tomb is dominant in the old family burial ground, which today is part of the tour of the

lawns and gardens. Orton Plantation is situated on the Cape Fear river between Wilmington and Southport, and is one of the South's best-known ante-bellum showplaces. Although the mansion itself remains a private residence, the gardens and grounds are open year round and provide a panorama of floral beauty throughout most of the year.

The cemetery is on a neck of land in shadowy detachment between two lagoons near the northern border of the grounds and gardens. It is reached by two footpaths, and the cluster of large, bricked tombs, plus several other headstones stand amid large live oaks, pines and cypress trees, all heavily-draped with gray, Spanish moss.

"King" Roger Moore's tomb is a brick rectangle about six feet in height and 12 feet in length, with a pointed roof. An inscription was added some years ago, which says, "Here rests King Roger Moore, granted 8,000 acres by the Lords Proprietors in 1720. He built older part of Orton Mansion in 1725."

Other tombs are of similar brick construction, but have flat marble slabs, or curved bricks, for tops, and some are inscribed and still legible.

Three of the brick monuments, presumably, contain the remains of "King" Roger Moore's two wives, and his half-brother, William. Roger died in 1750, and William followed in death about two years later. Some of the stones and tombs show burial dates in the 1800s, with the latest being

(Continued On Page Eight)



The featured speaker of the Brunswick County Board of Realtors to be held at the Tranquil Harbor Marina Restaurant at 12:30 o'clock September 11 will be C.H. Touchberry, 1970 president of the North Carolina Board of Realtors. He has been a member of the faculty of the North Carolina Realtors Institute for the past seven years and is a director of the North Carolina Real Estate Foundation.

## FHA Building Sets Record

A record year of homebuilding and home improvement through credit services of the Farmers Home Administration is in prospect for Brunswick county, Parks C. Fields, County Supervisor, said this week as he reported on activities for the past year.

Fields said \$220,730. was channeled into the County through loans for better town and country housing during the fiscal year ended June 30. Loans included funds for purchase or

(Continued On Page Eight)

## Native Of Switzerland

## New Presbyterian Preacher

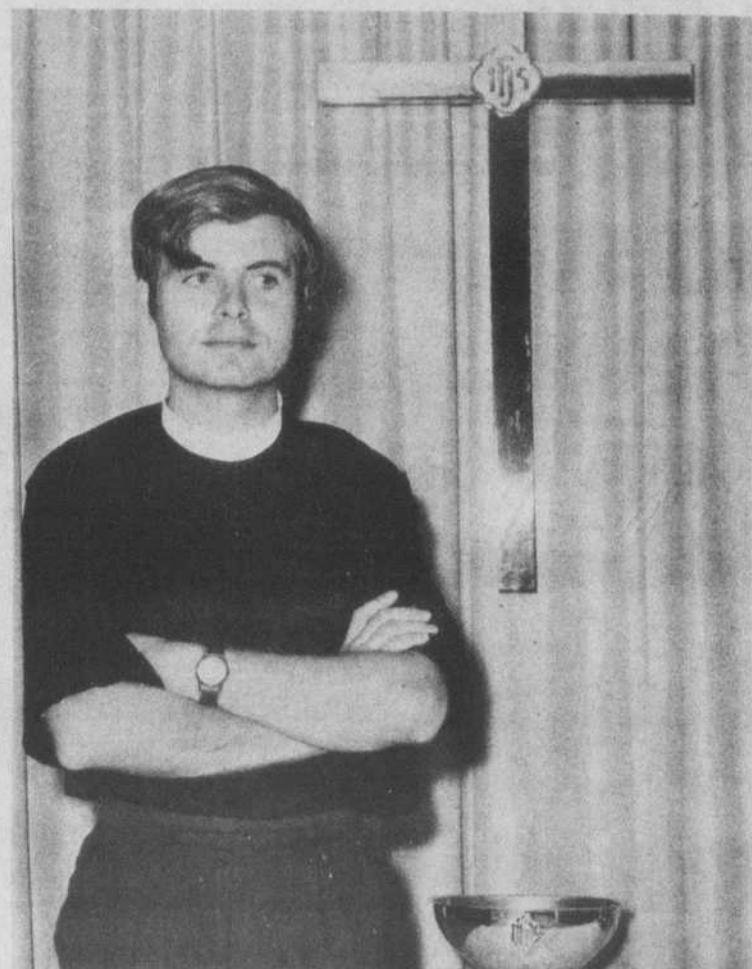
The Rev. Samuel Leuenberger has assumed the duties as pastor of Southport Presbyterian Church and New Hope Presbyterian Church, located at Winnabow.

The new minister is a native of Switzerland, having been born at Moutier in the District of Bern. His father, Hans Leuenberger, is a minister in the Swiss Reform Church.

The young minister came to the United States last year on a post graduate scholarship to Richmond Theological Seminary. He declares that he is delighted with life and his experiences in this country, which include meeting his fiancée, who is a social worker in Louisville, Ky.

Following graduation from high school, Rev. Leuenberger attended Theological School at Bern for five years, with this study being interrupted at one point while he attended the Anglican Seminary in St. Stephens House at Oxford University for six months. During his seminary days he spent vacation periods in England, principally as a worker in social camps.

He lives at the Presbyterian manse on Moore St. in Southport.



REV. LEUENBERGER

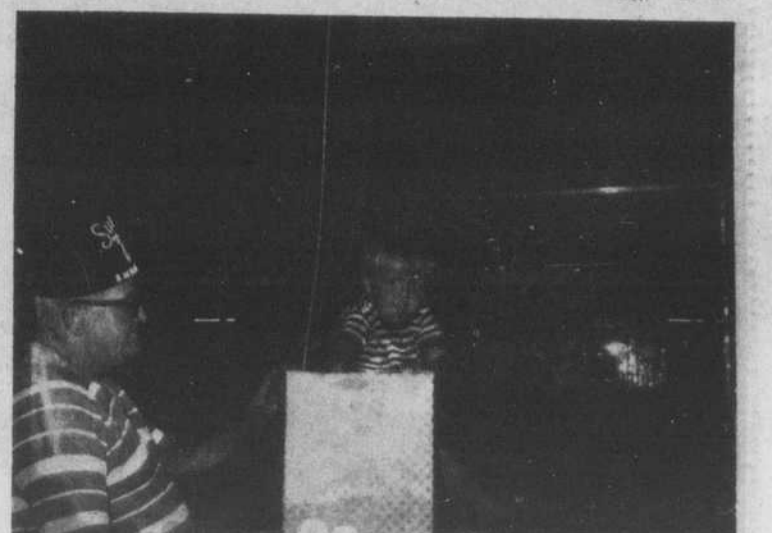
## Time And Tide

The late Dr. W.R. Goley was mayor of Shallotte in 1935, and his picture appeared on the front page of The Pilot for September 4. A momentous event of the past week had been a meeting in the lower part of the country for the purpose of changing the name of "No 5 Crossroads" to the new name which it bears to this day, "Thomasboro".

August had been an unusually hot month that year, with the mercury going above the 90-degree mark on 13 days; the editor had written an editorial entitled "Pay The Preacher"; and the upcoming movie was "Steamboat Round The Bend", starring Will Rogers.

A photo of the batteries at Fort Caswell dominated the front page of The Pilot for September 4, 1940. It was noted in the cutlines that

(Continued On Page Four)



## Draws Lucky Ticket

Mrs. Betty Hewett of Shallotte was winner of the Amphicat given away Monday night by the Brunswick County Shrine Club. Shown here drawing the lucky ticket is young Don Willetts. Archie Dixon is shown at the left.