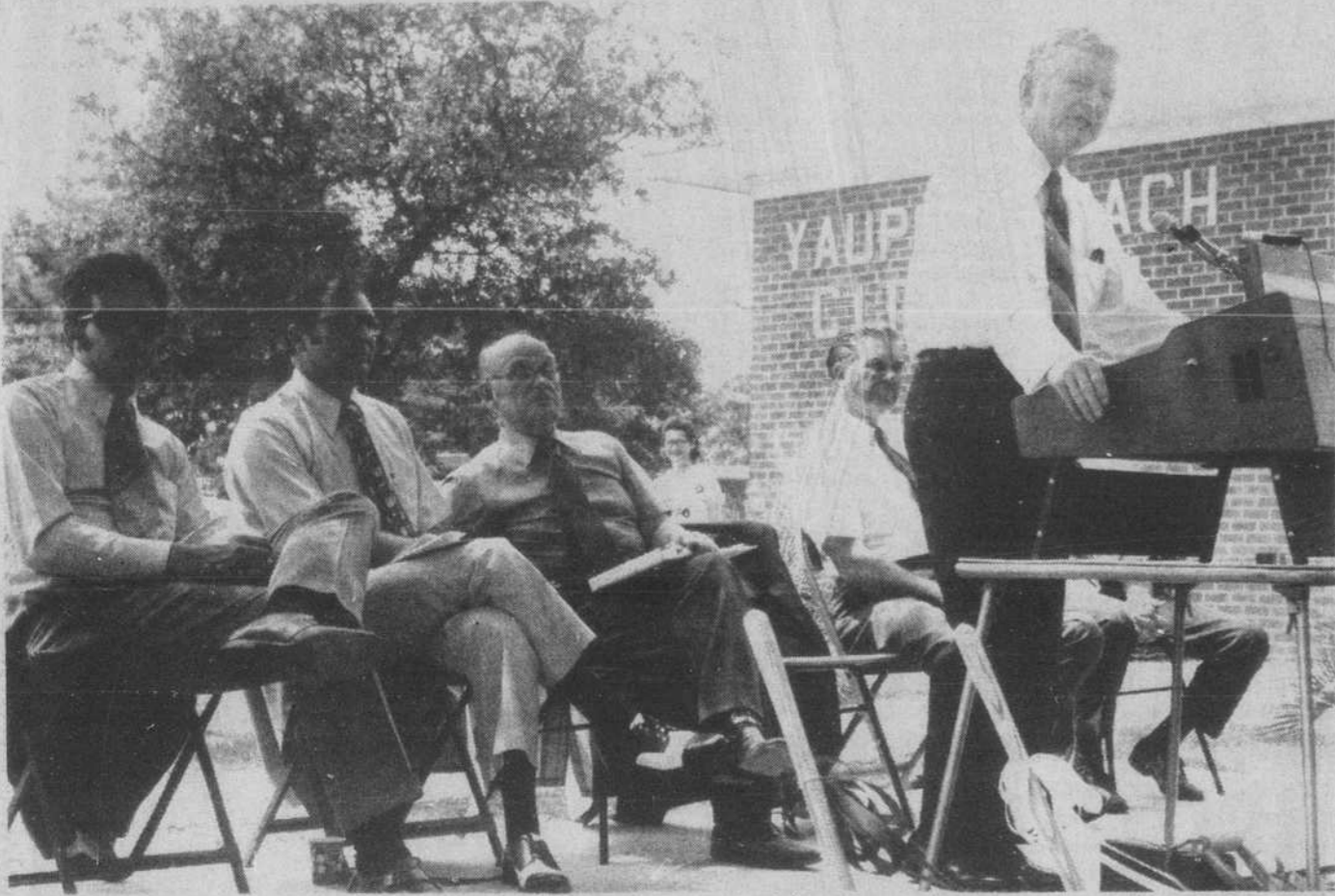


# THE STATE PORT PILOT

A Good Newspaper In A Good Community

VOLUME 43 NUMBER 3 16 PAGES TODAY WEDNESDAY, AUGUST 11, 1971 SOUTHPORT, N. C. 5c A COPY PUBLISHED EVERY WEDNESDAY



Congressman Alton Lennon was the principal speaker Tuesday at ground breaking ceremonies for the new waterworks system at Yaupon Beach. Seated, left to right, are Representative Tommy

Harrelson, Jimmy Johnson, State FHA Director, and Councilman W.E. McDougle and Mayor C.E. Murphy. (Photo by Spencer)

## Beach Protection Cited

# Yaupon Beach Begins Work On New Waterworks System

Construction of a \$253,000 water system for Yaupon Beach was begun Tuesday when Congressman Alton Lennon and Farmers Home Administration Director Jimmy Johnson turned the first spadeful of dirt for the project.

The town residents have approved a \$170,000 bond issue, guaranteed by FHA, and Yaupon Beach has received a \$83,000 FHA grant for the new system.

Two wells will be drilled, one at the city hall and one near the golf course. Robert Benson of Henry von Oesen and Associates of Wilmington, project engineers, said the well will be about 110 feet deep and analyses shows the quality of water will be very good, Benson said.

A 75,000-gallon elevated tank, to stand 130 feet high, will provide water storage and a pressure of about 50 pounds in the mains.

With summer demands for water in the community expected to reach 100,000 gallons a day, the new system, with the two wells in operation, will have a capacity of 200,000 to 250,000 gallons per day.

Yaupon Beach has a permanent population of about 400 persons and a summer population considerable larger.

W.E. McDougle, town commissioner and chairman of the water project, said plans call for about 250 services. There will be 22 fire hydrants installed initially.

Benson observed the completed project will decrease the town's insurance rates.

About 40,000 feet of piping will be laid in the project. The mains will be mostly of six-inch diameter with a few of eight inches.

Completion of the work is

expected around the first of the year. A budget of about \$25,000 a year will cover operating costs plus payment of the indebtedness, official estimated. The minimum water rate will be \$5 per month.

Four contractors are working on the project: Bryant Electric of High Point, pipe work and distribution system; Luther T. Rogers of Wilmington, site work, well houses, pumps and some pipe installation; Caldwell Tanks, Inc., of

Louisville, Ky., water tank; and Temperature Control of Wilmington, electrical work. Carolina Well and Pump Co. of Sanford will drill the wells.

Johnson noted that Brunswick County is in the planning stage of setting up a solid waste disposal program for the entire county. He said it will become one of the first counties in the United States to have such a system under FHA auspices.

Johnson was introduced by State Representative Tommy Harrelson of Southport.

Congressman Lennon urged all Brunswick County residents to support the beach protection projects, noting that 40 percent of the county's ad valorem tax base is in the beach properties.

He observed four out of the five beach communities imposed or indicated they will impose the necessary local taxes to match federal and state funds for the projects. The federal government will pay 70 percent of the total cost and the state 24 percent, leaving six percent for the county and local governments.

The congressman described the beach erosion situation as "very serious."

## CP&L Conducts Ecology Survey

Carolina Power & Light Co. has begun the second phase of a \$250,000 ecological study of the lower Cape Fear River, according to Aaron Padgett, environmental engineer for CP&L.

Object of the study is to provide CP&L with further information for evaluating the effects of plant construction and operation upon

the Cape Fear estuarine and ocean ecosystems.

CP&L is building the first nuclear generating plant in North Carolina near the Cape Fear River at Southport.

Dr. B.J. Copeland, director of NCSU's Pamlico Marine Laboratory in Aurora, and Dr. J.E. Hobbie, associate professor of zoology at NCSU, (Continued On Page Four)

## Funeral For Dollie Evans

Mrs. Dollie Spaulding Evans, 77, died Friday in Doshier Memorial Hospital, Southport. She was a resident of Southport, a member of Salem Lodge No. 109 and of St. James AME Zion Church, from which final rites were held Wednesday at 4 p.m. by the Rev. N.H. Daniels, with burial in John Smith Cemetery.

Survivors include a daughter, Mrs. Annie E. Francis, Southport; two sisters, Mrs. Minnie Griffin of Southport and Mrs. Eliza Cora Pyles of Winston-Salem; and five grandchildren.

The deceased was a successful business woman with many fields of interest. In (Continued On Page Four)

## Rules Of Shrimping Are Topic Of Annual Meeting

The main topic at the public hearing of coastal fishing regulations held recently at Wrightsville Beach was concern over shrimping regulations.

The Fisheries Committee of the N.C. Board of Conservation and Development conducted the annual meeting. More than 150 people attended.

Ernest Parker, Southport, chairman of the Fisheries Committee, suggested, and the committee concurred, that a resolution be adopted expressing support of the

### State C&D Board

Committee for the efforts of the Division of Commercial and Sports Fisheries personnel in regard to the program and procedures relating to the regulation of the shrimping industry. The following resolution was approved by the committee:

WHEREAS, the Fisheries Committee of the Board of Conservation and Development recognizes the concern that exists regarding the regulation of fishing areas during the 1971 shrimping season, and

WHEREAS, the Committee has carefully examined the objective that this program attempts to achieve through the establishment of nursery areas, and

WHEREAS, the committee found that through this program opening and closing of areas are based upon sound biological data obtained through the Division estuarine inventory program, and

WHEREAS, the committee has determined that the philosophy of this program will serve the best

interest of the fishing industry without favoritism to any group, and

WHEREAS, the Committee wishes to express their appreciation and support to the personnel of the Division for their effort seeking to improve the yields of the state shrimp and other fishery resources, NOW

THEREFORE, BE IT RESOLVED, that the committee commends and supports the Division and the (Continued On Page Four)

## Ferry Service

A substitute ferry has been placed in operation on the Southport-Fort Fisher run after the regular vessel was damaged last week when one of the propellers hit the edge of the channel while turning.

The regular ferry was put out of commission on Wednesday and the replacement began hauling vehicles on Saturday after an inspection by the Coast Guard. The damaged ferry was drydocked for repairs.



Receives Commission

Mrs. Marjorie P. Livingston, left, is shown here as she receives her Postmaster's Commission from C.T. Burke, Sectional Center Manager, at a ceremony held Wednesday at the Southport Post Office. (Photo by Delores Spencer)

## Mrs. Livingston New Postmaster

In a ceremony at the Southport Post Office last Wednesday Mrs. Marjorie P. Livingston was presented her Postmaster's Commission by C.T. Burke, Sectional Center Manager, of Wilmington. Mrs. Livingston's appointment became effective on July 17.

A number of relatives and friends were present for the occasion. Among them was former Postmaster L.T. Yaskell, of Southport, under whom Mrs. Livingston began her postal career in 1942.

Mrs. Livingston was born in Southport and graduated from Southport High School. Shortly after graduating from high school she began her postal career as a substitute clerk and has worked continuously since then in the Southport Post Office. She has served as Acting Postmaster of the office on three different occasions.

Mrs. Livingston is a member of the Southport Baptist Church. She is a Past Matron of Live Oak Chapter 179, the Order of the Eastern Star, and is presently serving as secretary.

## Schools Open On August 31

Summer vacation for the approximately 6,100 school students in Brunswick County will end as they report and register for the fall term on Tuesday, August 31, according to Ralph C. King, superintendent, Brunswick County Schools.

This first day will be orientation day and school will operate on a short schedule. All students are urged to be present and register, so as to reflect an accurate enrollment count.

Principals of all county schools are currently on duty and are available to clarify inquiries about school matters relative to their particular school operations. Principals are presently involved in planning for school opening.

Principals serving in the schools are as follows: Bolivia High School, Wade H. Duncan; Brunswick County, Southport High School, E.L. Pettiford; Leland High School, W. Nelson Best; Lincoln Elementary School, James F. Clemmons; Shallotte High School, Jasper T. Keziah; Southport Elementary School, Col. Marion L. Burn; Union Elementary School, Jonathan Hankins; Waccamaw High School, Roland W. English.

The county's 270 teachers and staff members will report for work on August 30 and will devote their efforts to planning for the new school (Continued On Page Four)



Conducting Survey

James Lee (l.), research assistant, empties a water sample into a jar during an ecological study of the Cape Fear River being conducted by North Carolina State University scientists on a grant from Carolina Power & Light Co. CP&L is building the first nuclear generating plant in North Carolina at Southport next to the Cape Fear. James McKenzie, summer aide, holds the jar.

## Time And Tide

It was back in the days of 1936, August 12 to be exact, that a front page story reported a rash of optimism over the prospects for a Coast Guard air base in Brunswick. There was other service news: A crew from Oak Island Coast Guard Station had gone offshore at midnight, only to find that the flickering light they had spotted was from a Southport fishing boat which had decided to remain outside overnight.

During the heat of August, announcement was made of the various hunting dates for the coming season; good catches of shrimp and fish had been reported at Southport; and the Southport Tennis Club was getting ready to stage a men's doubles tournament.

On August 13, 1941, we had a front page headline which gave September 8 as the opening date of Brunswick County schools. The Border Belt Tobacco Market had opened and farmers were well pleased with prices—26-27-cents per pound.

"Just Among The Fishermen" was the title of a new column in The Pilot, and the name suggested the subject matter. The Legionnaires had held a fish fry; a prisoner in the local bastille had attempted suicide—a busy week in town, no less.

In the Pilot for August 14, 1946, announcement was made of the opening of the Shallotte branch of the Waccamaw Bank & Trust Co. There was a front page announcement of a \$1,000 prize being offered in a locally-sponsored fishing rodeo, and there was evidence that a party fishing with Capt. Hulan Watts was off to a flying start: The front page picture was of a 5-ft., 8-inch sailfish caught by a fisherman out with him in a Gulf Stream trip.

The first ship for the Brunswick River Lay-Up Basin had been brought in through the Southport harbor, and warning signs had been placed at the very dangerous Jackie's Creek bridge on U.S. No. 17.

August 8, 1951, and a front page story in The Pilot told of the (Continued On Page Four)

## Wreck Kills Bolivia Man

The body of a Bolivia man killed in a Friday night wreck near Wilmington was found the next morning, only 45 feet from where his vehicle crashed after a high-speed chase.

Jerry Andrew Robbins, 25, apparently was killed instantly, according to investigating Highway Patrol Trooper R.S. Jackson.

Jackson said he had chased Robbins' car Friday night after he saw the victim and another man racing on River Road about 10 p.m. The other car slowed and was passed by the trooper, who continued in the chase of the Robbins car which reportedly reached speeds of 110 mph.

The wreck occurred, Trooper Jackson said, when Robbins lost control in the curve.

After the wreck, Trooper Jackson was joined by Trooper G.W. Kimrey at the scene and a search failed to turn up the driver of the vehicle.

Besides the troopers, two wrecker drivers and several passers-by combed the area (Continued On Page Four)

## County Passes \$1.90 Tax Rate

Brunswick County Commissioners have formally adopted the 1971 budget which provides for a tax rate of \$1.90. It is based upon 90-percent collection of taxes based upon \$80-million valuation.

A breakdown of the rate shows that \$1.02 is being levied for the Brunswick County School system. Of the remaining 82-cents per hundred provision is being made for a 5-cent levy to pay

for a sanitary landfill program which will provide six sites in various sections of the county. Also included is a 10-cent levy for capital outlay.

In addition to the regular tax assessment for the county, citizens will begin September 1 to pay a 4-percent sales tax, one-cent of which will be used by Brunswick County and the municipal governments within the county.