

THE STATE PORT PILOT

A Good Newspaper In A Good Community

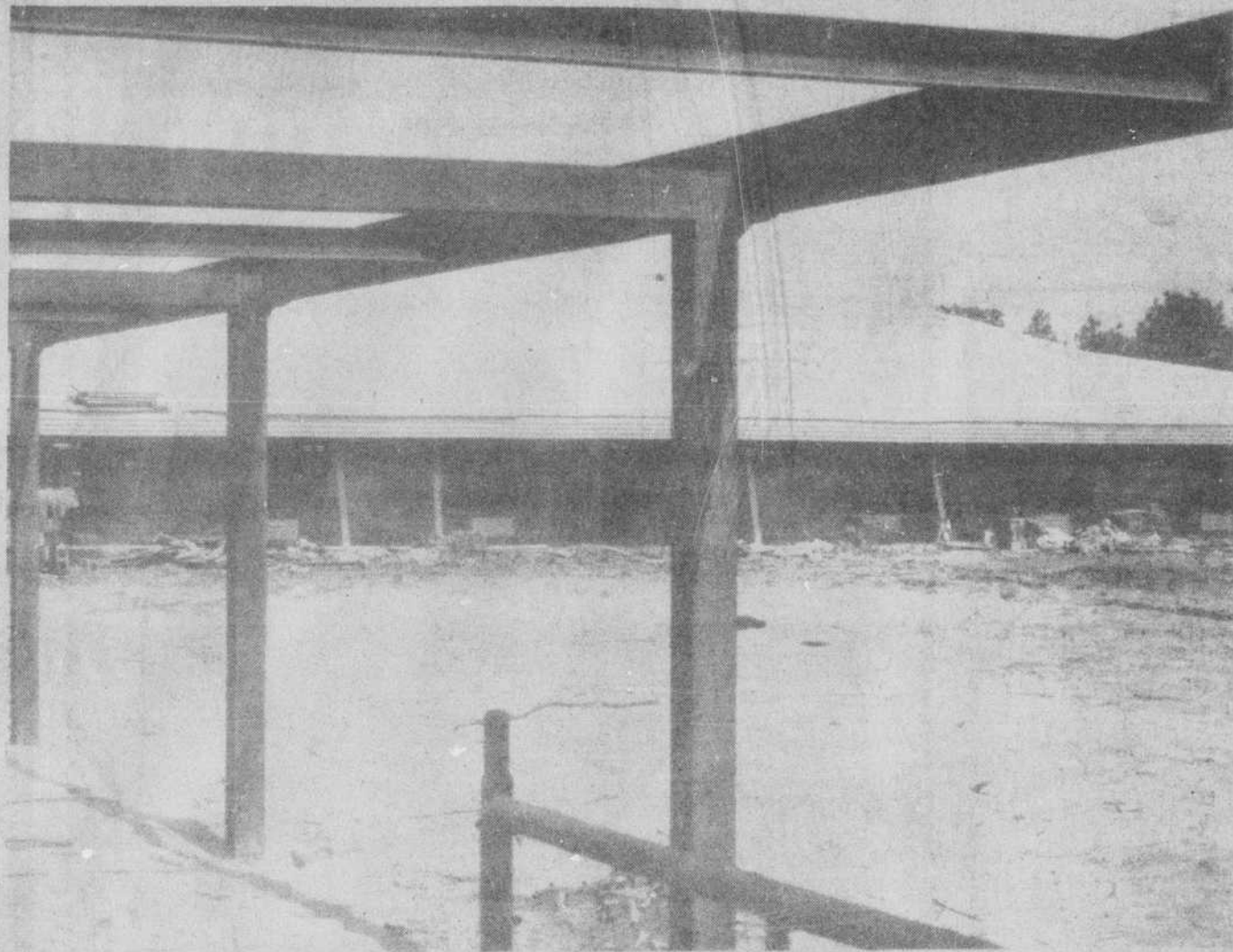
VOLUME 43 NUMBER 6

10 PAGES TODAY

WEDNESDAY, SEPTEMBER 1, 1971 SOUTHPORT, N. C.

5c A COPY

PUBLISHED EVERY WEDNESDAY



Southern Area High School

This photo shows progress being made in construction of the Southern area high school building at Boiling Spring Lakes. This school will serve students in the Southport-Bolivia area of

Brunswick County. All three consolidated high school buildings are scheduled for completion in time for classes to open in them in the fall of 1972. (Ed Harper Photo)

Reduced-Price Meals Available For Children

The Brunswick County Board of Education has announced a free and reduced price lunch policy for the Brunswick County school children unable to pay the full price.

Local school officials have adopted the accompanying family size and income scale to assist them in determining eligibility.

Families falling within these scales or those suffering from unusual circumstances or hardships are urged to apply for free or reduced price lunches for their children. They may do so by filling in the application forms sent home in a letter to parents. Additional copies are available at the prin-

cipal's office in each school. Applications may be submitted any time during the school year. The form itself is simple to complete and requests information needed to determine economic need based on the income and number of persons in the family and any unusual circumstances or hardships which affect the family's ability to pay for school lunches. The information provided on the application will be confidential and will be used only for the purpose of determining eligibility.

Under the provisions of the policy the local school principal will review applications and determine eligibility. If a parent is

dissatisfied with the ruling of a local official, he may make a request either orally or in writing for a hearing to appeal the decision.

Superintendent Ralph C. King, has been designated as the Hearing Official. Hearing procedures are outlined in the policy.

The policy also provides that there will be no identification of or discrimination against any student unable to pay the full costs of a lunch.

A complete copy of the policy is on file in each school and in the office of the Brunswick County Board of Education where it may be reviewed by any interested patron.

Price 'Freeze' Answers Noted

All residents of Brunswick County may obtain answers to questions on operation and interpretation of the Presidential order of August 15 on prices, rents, wages and salaries from the Brunswick County Agricultural Stabilization and Conservation Service (ASCS) office, according to Edgar L. Holden, Chairman of the County ASC Committee.

County ASCS offices throughout the United States have been chosen as information centers to answer questions from all citizens on President Nixon's Executive Order which is designed to stem inflation and strengthen

(Continued On Page Four)

Penny Sales Tax Now Effective For Brunswick

Starting today (Wednesday), when a buyer in Brunswick County purchases something for a dollar he has to dig into his pocket for an extra penny to pay the tax.

The one-percent sales and use tax, approved by the county's board of commissioners, went into effect September 1. The local option tax is levied on all merchandise that has been subject to the state's three-percent tax.

Most counties in southeastern North Carolina have enacted the levy, according to provisions of a law passed by the N.C. General Assembly during this year's session. The law allows county governments to levy the tax without a vote of the people, although there are means by which the public could abolish the tax later. The immediate benefits of

the tax do not include a property tax reduction, although the chairman of the county board hopes this will be the eventual result.

"I think it is a fair tax," said Chairman William Kopp, "and we hope we'll eventually realize a cut in property taxes."

"Although we haven't discussed specific items for the tax revenue, schools will receive a portion of the money," Kopp added.

During the course of a fiscal year, the county can

expect about \$200,000 from the tax while municipalities in Brunswick get about \$40,000 more. Jerry Lewis, the county manager, said the county will only benefit from two tax quarters this year because the tax was enacted after the start of the fiscal year and the next April-May-June quarter will be a part of next fiscal year's budget.

The N.C. Department of Revenue released information this week showing that Brunswick County collected \$1.2 million in sales

and use taxes during fiscal year 1970-71, so the extra-penny tax will increase county tax collections about 16 percent. The difference, however, is that almost all of the extra-penny collections will be returned to the county.

The \$1.2 million collection last fiscal year was based on total retail sales of \$38,182,538. By categories, the collections included:

One-percent retail sales, \$6,607; two-percent autos, planes and boats, \$60,828; (Continued On Page Four)

County Education Board Sets Out School Policies

The Brunswick County Board of Education met in special session August 18 and accepted the resignations of the following teachers: Waccamaw — Karen Bledsoe, William P. Furlpess, Earl Hughes; Shallotte — Claude E. Winfree, Mary C. Smith, Leland — W. Thomas Langdon.

Teaching contracts were approved for the following teachers for the 1971-72 school year: Lincoln — Sarah F. Lee, Martha D. Lane, Carolyn F. Thompson, Martha J. Nance; Shallotte — Susie Bruton, Allan Holden; B.C.-S.H. — William P. Furlpess, Dennis Pierce; Southport — Joyce J. Hewett; Waccamaw — Michael Hooks, Annie B. Hewett; county staff — Donald J. McNeill, supervisor — testing, evaluation, dissemination and community action — Title I, ESEA.

The school milk contracts, based on lowest aggregated bid, were awarded to the following Whitebrook Farms, All schools except Leland; Maola Milk Company, Leland School. The school bread bid was awarded to Made Rite. The Scholastic Accident Insurance Program for the 1971-72 school year was given to Pilot Life Insurance Company.

Acting upon results of surveys by principals, teachers, parents and student body, the board approved school colors and mascots for the area consolidated high schools: Western Area — Color, Kelley green and white; mascot — Trojans. Southern Area — Color, Carolina blue and white; Mascot — Cougar. Northern Area — Color, Navy Blue and Gold.

Upon recommendation by

Superintendent Ralph King and the school auditor, the board approved amendments to the 1970-71 School Budget.

Complying with the N.C. State School Board Regulation, the board approved the rate of travel for staff employees at 10 cents per mile.

In accordance with School Law Number 115-49 the board approved salary schedule for the 1971-72 school year for the following ESEA Title I staff members: Mrs. Muriel D. Lennon, Mrs. Edna M. Gause, Mr. Donald McNeill. Board members agreed to

discuss during a future meeting names for the area consolidated high schools.

The title of Director of Federal Programs, ESEA, Title I, was changed to assistant superintendent federal programs.

Superintendent King was given authorization to negotiate contract terms with Dr. William H. Knox for position program for exceptional children.

The board met in regular session August 2 and granted permission for sanitary landfill equipment to park on Board of Education property (Continued On Page Two)

New Lawyer In Southport

Carter Tate Lambeth has joined the law firm of Carter, Murchison, Fox and Newton and will be in charge of the Southport office.

Lambeth is a native of Winston-Salem, where he graduated at R.J. Reynolds High School. He received his A.B. degree from the University of the South with a major



CARTER LAMBETH

Williamson Gets Democratic Post

Odell Williamson, Shallotte real estate developer and former legislator, Friday night was elected chairman of the Democrat Executive Committee for Brunswick County. He succeeds Grover A. Gore, Southport attorney, whose resignation was accepted at this meeting.

Allison Holden, Shallotte barber, was elected treasurer of the organization, succeeding Robert Stanley who has moved out of state.

Outgoing chairman Gore presided over the election of officers. The name of Williamson was placed in nomination and when no other candidates were nominated, a move was made and seconded that the nominations be closed. It passed and the new chairman thus assumed his role of party chairman without opposition.

When the floor was opened for nominations for treasurer, Holden was nominated and the name of Eugene Gore also was placed in nomination. Holden was elected.

At this point Franklin Randolph, second vice-chairman of the Democrat Executive Committee for Brunswick County, arose to protest this vote, which he charged had followed racial lines. He declared that the Democrat party never will prosper until voters, both white and black, are able to cast their ballot without regard to color. He proclaimed his own loyalty to

the party, but declared that events such as the election of treasurer showed that no chain is stronger than its weakest link and that there were some weak links in the (Continued On Page Four)



JAMES TYER



CONNIE SUGGS



PAM CUMBEE

First-Citizens Bank To Open Office On Tuesday

First-Citizens Bank Trust Company will open its new Southport Office next Tuesday at 9 a.m., James Tyer announced today. The bank is located on Moore St. Tyer, has been named cashier and resident manager of the bank's Southport office.

First-Citizens will offer all major banking services at its newest office. These include savings, checking, lending, both installment and commercial, together with night depository and safe deposit boxes.

Hours for the bank will be from 9 a.m. to 1 p.m. and 3 to 5 p.m. Monday through Thursday and from 9 to 1 and 3 to 6 on Friday. Initially the bank will be

staffed, in addition to Tyer, by Mrs. Pam Cumbee and Mrs. Connie Suggs. These ladies will serve as tellers and bookkeepers for the Southport office.

A native of Wilmington, Tyer has been associated with First-Citizens since 1968. In his three years with the bank, he has had experience in the installment loan department, branch operations and commercial banking.

Prior to being promoted to manager of the Southport office, he served as manager of the Port City Branch in Wilmington. Previously, Tyer worked in the bank's Morehead City office in the installment loan department. He is a graduate of New

Hanover High School and the University of North Carolina at Wilmington. In addition he has completed several business and banking courses through the American Institute of Banking.

Tyer has served as secretary-treasurer of the Muscular Dystrophy Association and is active in the Wrightsboro Baptist Church.

He is married to the former Mary Jo Dempsey of Wilmington. They have two sons.

As a part of the week-long grand opening, all visitors to the bank will have the opportunity to register for a number of valuable prizes. For those 18 and over a (Continued On Page Four)



Fishing At Shallotte Inlet

This was the scene Sunday at Shallotte Inlet where fishermen were getting a jump on fall fishing, which is fabulous at this location. The man on the left obviously has settled down for a long siege; the fellow on the right is a little more alert, including an appreciation for passing

scenery. And the lady. Either she has done well and has filled her basket, or else she is a very optimistic angler and has made provision for taking care of a big catch of fish. This picture was taken from the Ocean Isle Beach side. (Photo by Elgie Clemmons)